



AMERICAN ELECTRIC EQUIPMENT, INC.

P.O. BOX 710 BECKLEY, WV 25801

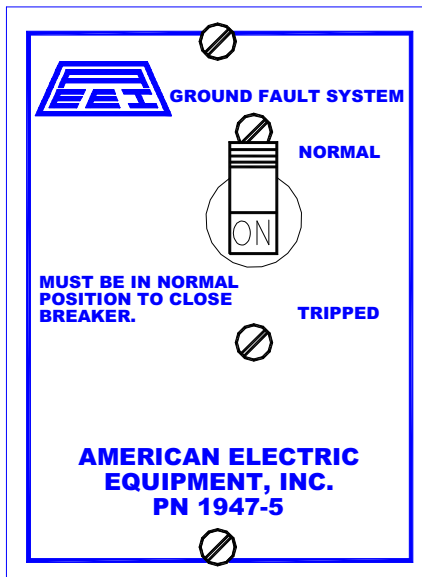
PHONE: 304-255-7438

FAX: 304-255-7448

**1947-5 GROUND FAULT
POTENTIAL TYPE
WIRES ACROSS GROUNDING RESISTOR**

Document A-8809
2006

JULY 12,



Features

- ✓ No adjustments are required to place into operation
- ✓ Harsh environment operation; no sensitive electronic components to fail
- ✓ Optimized for use on 15 A or 25 A resistance grounded systems
- ✓ Direct replacement for many trip devices
- ✓ Latched Fault indication
- ✓ Wires directly across grounding resistors
- ✓ Trips on a ground fault condition even in the event of an open grounding resistor
- ✓ Has an adjustable time delay of 0-3 seconds

Description

The 1947-5 GROUND FAULT SYSTEM provides form C contacts to be used to trip circuits in the event of a backup ground fault.

When the indicator is in the NORMAL position terminals 3 & 4 are closed and terminals 3 & 5 are open.

When the indicator is in the TRIPPED position terminals 3 & 4 are open and terminals 3 & 5 are closed.

Operation

Connect ground fault as shown on drawing.

Two series 500 ohm 50 watt resistors are required for 575 L-N connection.

Set the ground fault indicator to the NORMAL position. Factory default time setting is 1.5 seconds.

When the voltage sensed across the grounding resistor is above 105 volts (no external resistors) or 225 volts (with 1000 ohm external resistance) the indicator will move to the TRIPPED position after the set time delay.

ORDERING INFORMATION

AIR PAX BREAKER: A-1779

½ WATT 5 MEG POT: A-3325-2

GROUND FAULT PART NUMBER: B-1947-5

SERIES RESISTOR PART NUMBER: A-4266-C14

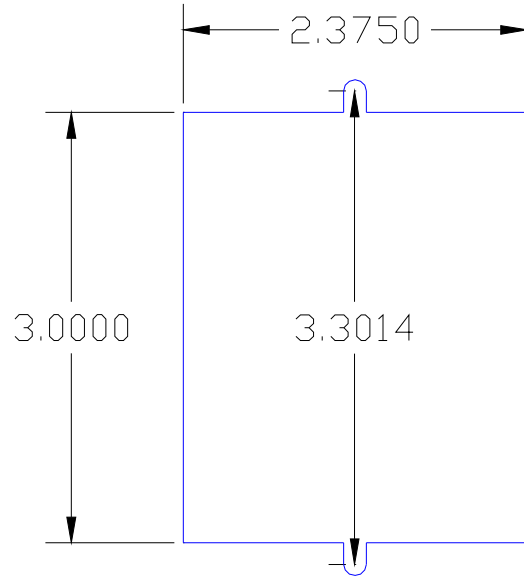
.25 SEC SOLID STATE TIMER: A-3325-1

5 POLE TERMINAL BLOCK: A-1494-5

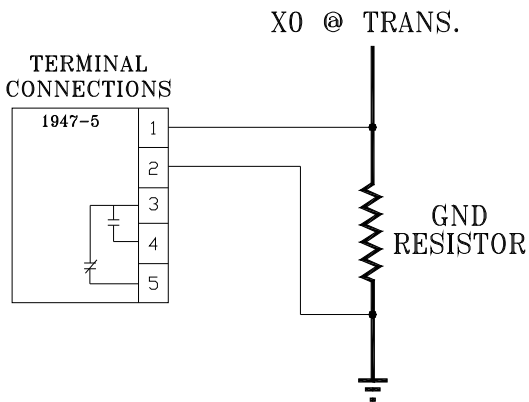
500 OHM 50 WATT RESISTOR: A-4266-C14

250 OHM 50 WATT RESISTOR: A-4266-C11

AMERICAN ELECTRIC EQUIPMENT, INC.
 BECKLEY, WV
 PHONE: 304-255-7438
 FAX: 304-255-7448



AMERICAN ELECTRIC
 GROUND FAULT
 POTENTIAL TYPE
 277/346 VOLT L-N CONNECTION
 1947-5



AMERICAN ELECTRIC
 GROUND FAULT
 POTENTIAL TYPE
 575 VOLT L-N CONNECTION
 1947-5

