



# THOMPSON MEAT MACHINERY

## *Thompson 400 Bandsaw* *Heavy Duty Industrial High Speed Supercut Bandsaw*

MACHINE IN COMPLIANCE WITH  
AUSTRALIAN STANDARDS AND REGULATIONS

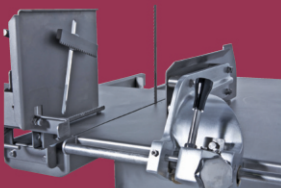
ON/OFF AND EMERGENCY STOP  
CONTROL AT OPERATORS EYE LEVEL



TILT UP TABLE  
*Provides thorough  
and easy sanitation*



SLIDING TABLE  
*Optional*



LAST SLICE DEVICE & FINE  
ADJUSTMENT  
*Optional*



REMOVABLE  
BLADE GUARD

HIGH CLEARANCE  
FROM FLOOR  
ALLOWING CLEANING  
UNDER WITH EASE

KICK STOP SWITCH

HIGH QUALITY STAINLESS STEEL  
CONSTRUCTION AND PERFORMANCE

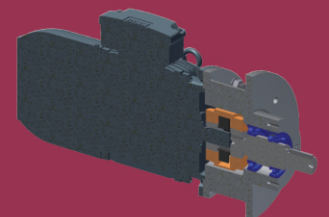
SAFETY FLANGES ON STAINLESS STEEL  
OR TINNED WHEELS  
*Precision Machined and Balanced ensuring  
smooth and safe operation*



WHEEL AND BLADE SCRAPPERS



BOTTOM WHEEL MOTOR AND  
FLYWHEEL ASSEMBLY



3kW HIGH SPEED MOTOR  
WITH HEAVY DUTY  
BEARING ASSEMBLY

**"THOMPSON TOUGH"**

LEADING AUSTRALIAN MANUFACTURERS OF MEAT PROCESSING MACHINERY

# THOMPSON 400 BANDSAW

The **THOMPSON 400 BANDSAW** is a **HEAVY DUTY INDUSTRIAL HIGH SPEED SUPERCUT BANDSAW** renowned for its **UNIQUE DESIGN**. The **HIGH QUALITY CONSTRUCTION** and **PERFORMANCE** offers **SUPERIOR LOW MAINTENANCE** in large quality processing plants, supermarkets and butcher shops. With the **QUIET OPERATIONS** and **ATTRACTIVE APPEARANCE**, it is ideally suited to a prominent position in shop fronts where the bandsaw is exposed to the public.

## PERFORMANCE

The **HIGH BLADE SPEED** and **EFFICIENT DESIGN** of the Thompson 400 Bandsaw significantly improves the cutting action.

- 1960m/min (6450 ft/min)
- Cleaner cuts with reduced bone dust on product
- Portion cutting is straight and accurate
- Blade does not wander
- Cuts through frozen product (blocks) effortlessly
- Increases cutting efficiency and yields

## CONSTRUCTION

Thompson 400 Bandsaw is constructed from the **HEAVY DUTY STAINLESS STEEL**. **WHEEL AND BLADE SCRAPERS** are fitted to reduce product build up between the wheels and blades.

The **TOP WHEEL HOUSING** is fully enclosed eliminating possibility of debris falling onto the table or product during operation.

**BOTTOM WHEEL MOTOR AND FLYWHEEL ASSEMBLY** fitted with coupling drive, intermediate bearing housing and lower wheel Stainless Steel taperlock. This allows easy removal of bottom wheel and adjustment to eliminate possibility of the wheel seizing onto the Stainless Steel drive shaft through the life of the machine.

Fully enclosed and improved **BLADE TENSION ASSEMBLY** with positive tension setting locked to guarantee consistent blade tension through the life of the machine.

## SAFETY

Thompson 400 Bandsaw offers features that **MAXIMIZE SAFETY** to the operator and other persons in close vicinity. Work Place Safety is a priority that should not be compromised.

**BRAKE MOTOR** allows the blade to stop within approximately 4 sec when stop button is activated. This minimizes the possibility of accidents caused through blade run on.

## THOMPSON 400 BANDSAW SPECIFICATIONS:

Dimension	
Overall Height	2005 mm
Cutting Height	600 mm
Floor Area (Door Closed)	911 mm x 1091 mm
Floor to Table Height	970 mm
Cutting Table Dimension	911 mm x 931 mm
Cutting Throat Height	600 mm
Cutting Throat Width	397 mm
Shipping Dimension	
Shipping Weight	400 kg
Shipping Size (L x W x H)	1185 mm x 1185 mm x 2170 mm
Power	
Power Supply (With Brake)	Recommended, 16 Amp D Curve Circuit Breaker
Motor Data	3 kW 4 pole (3 phase)
Blade	
Blade Length	2570 mm
Blade Width	16 mm
Blade Speed	1960 m/min (6450 ft/min)

*Technical data is to be used as a guide only and is subject to change without notice.*

**BRAKE OVERRIDE BUTTON** allows the flywheels to be turned by hand for easy blade setup and machine maintenance.

**FOOT CONTROLLED STOP KICK SWITCH** enables the bandsaw to be stopped safely when the operator's hands are full.

**LIMIT SWITCHES** on doors and tilt-up table ensure that bandsaw cannot be accidentally started during and after cleaning operations eliminating operator injury. Limit switches are internally wired to improve the safety, hygiene and appearance.

**PURPOSE DESIGNED WHEELS** with safety flanges prevent blades from dislodging, eliminating possibility of operator injury. Precision machined and balanced wheels ensuring smooth, quiet and safe operation.

**BLADEGUARD (PATENTED)** is an automatic blade guarding system that completely covers the bandsaw blade when it's not in use. This mechanism is fast, effective and does not reduce any cutting efficiencies. It also prevents the motor from burning out in high stop and start operation situations.

## EFFICIENT OPERATION

**START / STOP CONTROLS** are located at easily visible eye level for quick and easy access.

The **BLADE TENSION ASSEMBLY** automatically adjusts the blade to a factory preset tension.

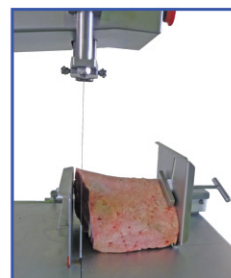
The **POWERFUL DIRECT DRIVE SYSTEM** provides positive and constant blade speed and eliminates the requirements of frequent adjustments and replacement.

A **POWERFUL 3kW MOTOR** ensures continuous smooth cutting operation through fresh or frozen products.

The **HIGH CLEARANCE FROM FLOOR** allows easy and thorough cleaning providing maximum hygiene.

## RECOMMENDED OPTIONS

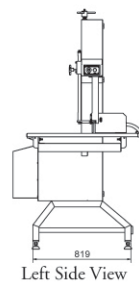
- Stainless Steel Flywheels
- Sliding table with stainless steel rollers - easily interchangeable between fixed and sliding tables options
- Last slice device
- Bladeguard – Automatic Blade Guarding System
- Fine Adjustment Thickness Guide
- Available in left or right hand configuration



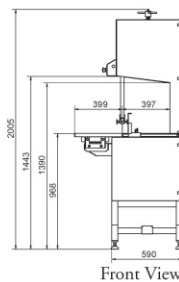
Last Slice Clamping Device



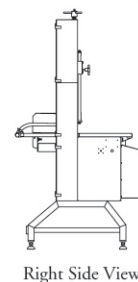
Left Hand Configuration Bandsaw with Safety Inspection Windows



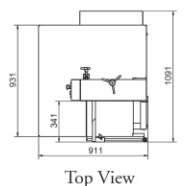
Left Side View



Front View



Right Side View



Top View

*Manufactured in accordance with Australian Standards and Regulations*



Delivering quality at the right price

**Dussen Pty Ltd**  
Unit 3/70 Andrew Street Wynnum, Qld Australia 4178

Phone: (+61) 7 3393 6552 Fax: (+61) 7 3393 6352  
Email: sales@dussen.com.au Website: www.dussen.com.au