



**Prototyping
Manufacturing
Specialty Welding
Design Engineering**



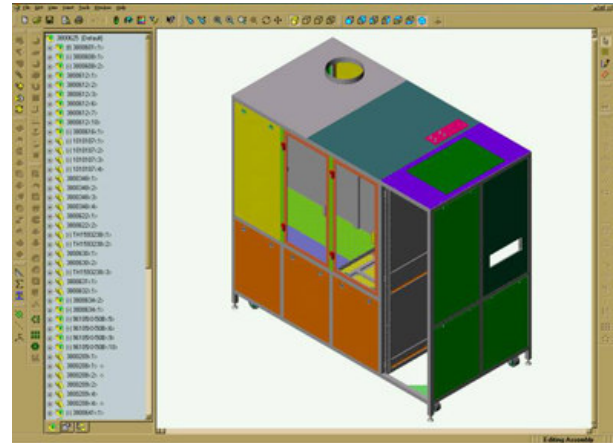
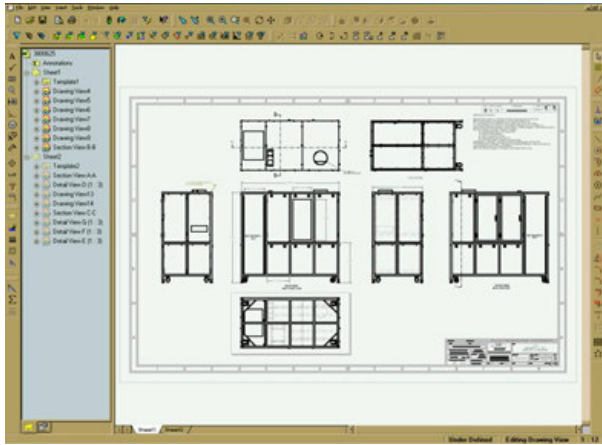
**Specializing in design engineering, fabrication, welding,
and finishing of short run and prototype light gage sheet metal products.**

“Delta Solar” Smithsonian Institute, Washington, D.C.

**1423 Chestnut Ave., Hillside, NJ 07205
(973) 923-1100 / Fax (973) 923-8501
www.GHSMW.com**

From CONCEPT to Design...

G&H offers complete manufacturing services from design conceptualization and solid modeling to finishing and delivery of a completed project. We work with most types of metals in both sheet and tubular construction.



G&H provides product development and prototype assistance through the use of Three Dimensional Solids modeling.

**Completed assembly:
OEM process equipment enclosure
of tubular construction,
featuring sheet metal access panels,
perforated work surfaces,
electronics mounting hardware,
Plexiglas or wire reinforced safety glass doors.**



"As a start up company, our design engineering capabilities were greatly augmented by G&H's. G&H had designed and manufactured the enclosure (system frame) per our specific requirements. This allowed us to concentrate on the development of the process equipment and best service our customer. The enclosure has proven to be of excellent construction and sturdy design."

Gary S. Tompa, President, Structured Materials Industries, Inc, Piscataway, NJ.

...Through MANUFACTURE to Delivery

G&H specializes in the custom fabrication of metal products. We work closely with our customers from start to finish. We strive for savings in price, not quality.



Electrical enclosure with machined holes, welded brackets, and textured paint; panels show punch pressed holes using existing tooling to avoid expensive tooling charges and save the customer money. Panels black anodized finished.



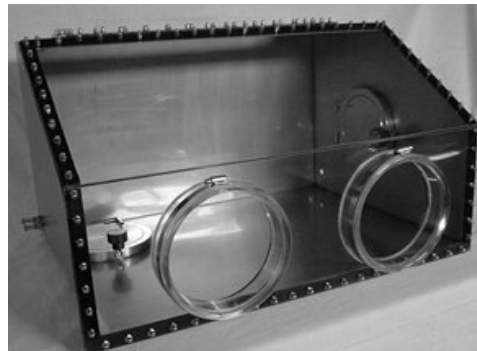
Finished products may include powder coat and assembly of component parts, as shown. Many other finishes and assembly options available.



G&H offers roll forming, Heli-arc welding, silver soldering, metal spinning, punching, and bending.



“Clean Room” Dust-free storage cabinets for Nitrogen Atmosphere;
Adjustable perforated S/S shelf and magnetic sealed door w/ latch.



Mini controlled clean environment glove box:
Fully welded S/S construction, Polycarbonate viewing area.

Experience you can count on...

For over 60 years **G&H Sheet Metal Works** has provided quality products and services to the architectural woodworking, food handling, semiconductor, pharmaceutical, and telecommunications industries.

"G&H Sheet Metal is not one of our largest suppliers however they are one of our best. They have become part of our design team and from concept to finished product they always deliver more than expected."

William Farrell, President, Flow Solutions, Clark, NJ.

"Every time we placed an order with G&H they have shown us quality work at a competitive price within a very quick turnaround. Quality + Price + Great Service adds up to a valuable vendor for our team."

John Izzi, New Jersey Glass, Newark, NJ.



**1423 Chestnut Ave.
Hillside, NJ 07205
www.GHSMW.com**

...Equipment List

Shearing, Brakes & Punch presses

- Strippit FC 1000S 33 station turret press
- Strippit super 30/30, 2x
- Strippit 70 ton 6' CNC press brake
- Wysong press brake, 140 ton 10 ft x 3/16 cap.
- Niagara shear, 10 ft x 10 ga capacity
- Wysong shear, 5 ft x 10 ga capacity
- Version press brake, 60 ton x 8 ft x 1/8" cap.
- Diacro press brake, 12 ton x 4 ft x 10 ga cap.
- Rouselle punch press, 15 ton
- Rouselle punch press, 10 ton, 3x
- Chicago box brake, 8 ft x 14 ga cap.
- Chicago box brake, 4 ft x 14 ga, 2x
- Folder, 2 ½ ft capacity
- Folder, 2 ft capacity
- Corner radiusing punch press

Cutting Equipment

- KMT precision cold cut off 4" x 45 degree
- Eisele precision cold cut off saw
- Kalamazoo bed saw, 20ft x 28" capacity
- Connecticut band saw
- Radial arm saw with carbide blades

Rolling Equipment

- Slip roll, power roller, 51" x 1/8" capacity
- Slip roll, hand roller, 38" x 3/32" capacity
- Slip roll, hand roller, 25" x 3/32" capacity

Welding / Cutting Equipment

- Lincoln Precision TIG 375 square wave
- Linde 250 amp MIG welder, 2x
- Miller precise adjustment 250 amp TIG, 2x
- Miller 250 amp self contained MIG welder
- Airco 160 amp self contained MIG welder
- Oxygen / Propane, large capacity
- Rotating positioner
- Thermal Dynamics 3/8" plasma torch
- Thermal Arc plasma torch, 1/8" capacity
- Eisler resistance spot welder, 35 kva
- Eisler resistance spot welder, 20 kva
- Eisler resistance spot welder, 15 kva
- Midwest stud welder, 25 amp

Drilling & Milling Equipment

- Bridgeport variable speed 42" milling mach.
- ½" bench drill press
- ½" floor drill press, 2x
- ½" radial drill press

Design & Engineering Equipment

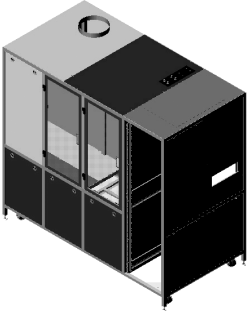
- SolidWorks release 2007
- Volvoview Autocad file viewer
- B-size HP laser jet printer

Handling Equipment

- Large capacity overhead hoists, 4x
- Fork lift, 2x
- Chevrolet, 8 ft x12 ft Rack-body flatbed truck
- Mitsubishi Fuso, 16 ft x 8 ft Custom box truck
- Dodge, cargo van

Are you looking for:

- Value Engineering, Computer Aided 3D Design & Drafting
- Quality equal to or better than expectations
- Dependable Fabrication & Assembly
- 60+ Years Of Proven Experience



Web: WWW.GHSMW.COM

You can find all this and more at

G&H Sheet Metal Works, Inc.

Sheet Metal Fabricators

Expert design engineering, fabrication, welding, and finishing of light gage sheet metal, tubing, and structural metals. Here are common examples of our work:

- Product Development & Prototype Assistance
- Mechanical Assembly Available
- Ornamental Metals & Architectural Work
- Custom Fabrication
- Display Mounting Systems / Signage
- Clean Room Mini Environments & Equipment
- OEM Equipment Enclosures
- Mechanical Contractor Support (Railings, Hand Rails, etc.)
- Technical Welding Capabilities For all common and most exotic metals and plastics.

Give us a call for the voice of experience to help your needs.

Phone: 973-923-1100 Fax: 973-923-8501

Exceptional Turn-around Time !