

2015



**8782 Ulery Rd.
New Carlisle, Ohio 45344**

**1.800.358.8070
937.845.8781**

937.845.9941 FAX

www.reskillings.com

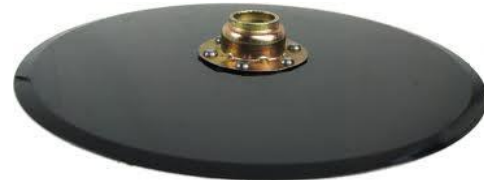
ITEMS OF INTEREST FOR 2015

DAWN CURVETINE CLOSING WHEELS
PG.8



**HD DOUBLE ROLLER BEARING
OPENER FOR KINZE PLANTERS**

PG.29



SHREDDING THE COMPETITION



The first drastically new section tooth design in decades!

PG. 50

Made In The USA

**JD 7200+ CAST CLOSING FRAME
UPDATE KIT**

PG.34



VERTICAL TILLAGE BLADES

PG.39



Vortex



Samurai 330



100% USA 15" SEED OPENER 3.5MM.
PG.29

CALMER TRASH REDUCTION SYSTEMS

*CALL FOR PRICING



ROW STARTER KITS

PG. 24-25



INDEX OF ITEMS

ITEM	PAGE
AIR COMPRESSORS	84
AIR TOOLS (CP, IR)	85
AUGER FINGERS (JD)	52
AUGERS CASE IH	75
AUGERS (JD)	69,70,72
BATTERIES CORDLESS	97
BATTERY CHARGERS	97
BELTS CASE IH	74
BELTS JOHN DEERE	69,71,73
BLADES ROTARY DRUM	47
BOLTS, BOLT BINS	99-102
BOTTLE JACKS	96
CAB CAM SYSTEMS	4, 67
CHAIN: LOG CHAIN AND ACCESSORIES	82
CHISEL PLOW BLADES	43
CHISELS, TWISTED AND SPIKES	42
CLEANERS	81
COMBINE TROUGH LINER KITS	78
CONCAVES JD & CASE IH	59,61
CORN HEAD PARTS	63,65,66
COULTER BLADES (NO TILL)	28
COULTER BLADES (FERTILIZER)	30
COULTER BLADES (SIDE DRESS)	41
CURVE TINE CLOSING WHEELS (DAWN)	8
DISC BEARINGS	19
DISC BLADES	19
DISC HARROW PARTS	20-21
DRILL BITS (NORESMA)	88
DRILL PARTS	37-38
ELEVATOR CHAINS (JD&CIH)	59,61
EZ SLIDE GRAPHITE	35
FEEDER HOUSE CHAINS (JD/CIH)	59-60
FEEDER HOUSE SILENCER KIT	78
FLAGS (FIELD MARKING)	95
FLUID FILM	89
GAUGE WHEEL ARMS	34
GAUGE WHEEL ASSEMBLIES	5, 33
GAUGE WHEEL TIRES	7,32,38
GEAR PULLERS (POSI Lock)	94
GRAIN GRABBER	78
GRAIN HEAD PARTS	49-57
GRAIN TANK LINERS	78
GREASE GUNS (CORDLESS)	96
GRINDERS (ANGLE)	87
HARROW SPIKES	18
HAYBINE PARTS	48-49
HEATERS (LB WHITE)	79
HITCH PINS	82
HOSE REELS	83
HOSE (SPRAYER)	22
HOSE (AIR& HYDRAULIC)	83

ITEM	PAGE
KEETON SEED FIRMERS	13
LIGHTS	95
MOELLER FERT. KNIFE	30
MOJO WIRES	13
NEEDHAM FIRING WHEEL	11
PB BLASTER / FREE ALL	89
PLANTER CHAINS	36
PLANTER PARTS (JD&KINZE)	27-36
PLANTER PARTS CIH	33
PLOW PAERTS	45-46
POPULATION MONITOR KITS	27
PORTA POWER	96
PRECISION PLANTING	13-16
PRESSURE WASHERS	80-81
PTO SHAFTS	98
PUMPS (SPRAYER AND TRANSFER)	23
PUNCH AND CHISEL SETS	94
RAKE WHEELS	48
RASP BARS (JD)	58
RATCHET BINDERS	82
RED BALL MONITOR KITS	24-25
REEL TINES	56
RESIDUE MANAGER	12
REZNOR WASTE OIL HEATERS	80
RIPPER POINTS & BLADES	43-44
RITCHIE WATERERS	79
ROLLER CHAIN	36, 68
ROTARY HOE WHEELS	40
ROTOR BAR KITS (CASE IH)	60
ROW CLEANERS (DAWN & MARTIN)	4-7
ROW STARTER KITS	24-25
"S" TINE SWEEPS	41
SCH KITS & PARTS	55
SCHUCK HITCHES	67
SECTIONS (TIGER SHARK)	50
SEED DISK OPENERS	29,28
SEED FIRMERS	13
SEED FLOW LUBRICANT	35
SEED SENSORS	27
SHANK PROTECTORS	17
SICKLE KNIFE BACKS	52
SIEVES (JD & CIH)	62
SKID PLATE KITS	57
SNOUTS (POLY)	77
SOCKET SETS	92
SOCKET SETS (IMPACT)	86
SPADE CLOSING WHEELS	8-11
SPRAYER CONTROLS	26
SPRINGS (DOWN PRESSURE)	35
STALK STOMPERS	64
STRAW CHOPPER PARTS	76

ITEM	PAGE
STRIP TILL KNIVES	43
SWEEPS (ULTRA WING)	17
TAP & DIE SET	89
TARP STRAPS (RUBBER)	98
TIRE SEAL	93
TOTALLY TUBULAR	26
TRUCK HITCHES (SCHUCK)	67
VERTICAL TILLAGE BLADES	39
WRENCHES	94-96

List Of Delivery Area By County

**AUGLAIZE
BUTLER
CHAMPAIGN
CLARK
CLINTON
DARKE
DELAWARE
FAYETTE
FRANKLIN
GREENE
HARDIN
LOGAN
MADISON
MERCER
MIAMI
MONTGOMERY
PICKAWAY
PREBLE
SHELBY
UNION
WARREN**

Our Hours Of Operation Are:**JANUARY**

**M-F 7:30AM. TO 5 PM.
SATURDAY 7:30 TO 12 NOON
CLOSED SUNDAY**

**FEBRUARY-DECEMBER
M-SAT. 7:30 AM. TO 5 PM.
CLOSED SUNDAY**

**TO PLACE AN ORDER VIA FAX:
937.845.9941**

**TO PLACE AN ORDER BY PHONE:
1.800.358.8070**

**TO PLACE AN ORDER BY EMAIL:
reskillings@reskillings.com**



VERTICAL TILLAGE BLADES

*THESE BLADES ARE MADE WITH BORON STEEL FOR LONGER LIFE!
 *SELF SHARPENING.
 *MANY OF THESE BLADES ARE THE OEM REPLACEMENT.
 *THESE BLADES ARE DESIGNED TO CORRECT THE "BLUNTING" PROBLEM!

APPLICATION	DIAMETER	PRICE
HORSH "JOKER" O.E.M.	20" X 1/4" (5 HOLE)	\$50.95 SALE
MCFARLANE (OEM.)	20" X 1.5" X 9/16 CONCAVITY	\$55.50 SALE
CASE IH 330 *EXCELLENT CHOPPER (SAMURAI GT)	20" X 1.5" X 1.25" CONCAVITY	\$60.00 SALE
CASE IH 330 *EXCELLENT CHOPPER (SAMURAI)	20" X 1.5" X 1.25" CONCAVITY	\$49.50 SALE
SOIL REBEL	20" X 1.5" RND. X 2" CONCAVITY	\$52.50 SALE
CASE IH 330 *EXCELLENT CHOPPER (SOIL RAZOR)	20" X 6 GA.	\$55.50 SALE
SEVERAL	20" X 25 WAVE (1-1/8" X 1 1/4" SQ.)	\$41.50 SALE
LANDOLL VT+ 7400	22" X 6MM. X 1 3/4" ROUND HOLE SHALLOW	\$51.95 SALE

VORTEX REPLACEMENT BLADES

SIZE	PART #	APPLICATION	PRICE
20" X 1/4" X 1 1/8" - 1 1/4"	VT201814	DISC CONVERSION	\$55.50 "SALE"
20" X 1/4" (4 HOLE)	VT20MLOL	SALFORD	\$55.50 "SALE"
20" X 6MM. X 1.5" HOLE	VTC2015RFC-RH	CASE IH 330	\$50.00 "SALE"
20" X 6MM. X 1.5" HOLE	VTC2015LFC-LH	CASE IH 330	\$50.00 "SALE"
20" X 1/4" X 1 3/4" RND.	VT20134R	GREAT PLAINS TT	\$55.50 "SALE"
22" X 1/4" X 1 3/4" RND.	VT22134R	GREAT PLAINS TT	\$65.50 "SALE"
22" X 1/4" X 1 1/2" RND.	VTC221814LH/RH	CASE IH 330	\$65.50 "SALE"

*SELF SHARPENING!

*CASE 330 BLADES ARE DESIGNED LIKE OEM!



VORTEX
COULTERS®



BELLOTA



STOP BY AND SEE OUR WIDE SELECTION OF VERTICAL TILLAGE BLADES!
 PRICES SUBJECT TO CHANGE WITHOUT NOTICE!

CAMERA OBSERVATION SYSTEM



9" MONITOR

811-SC209W

\$ 379.00 SALE

System Includes 2 Weatherproof Night Vision Cameras, Lcd 9" Monitor, Remote Control, A/V Cables, Mounting Brackets And 12 Volt Power Adapter.

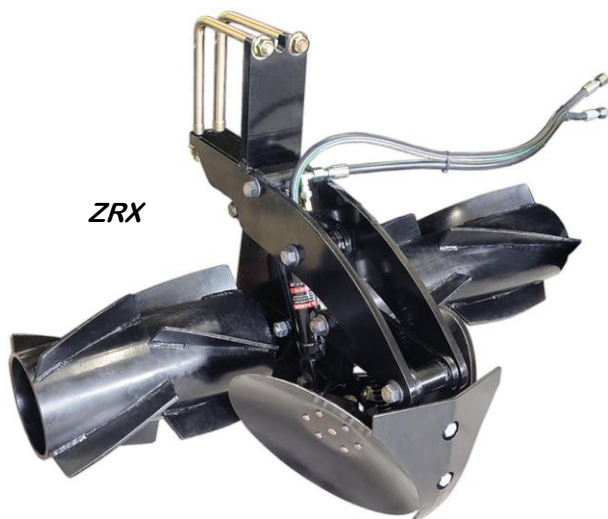
Don't Get Caught In A Blind Spot...It Can Be A Costly Mistake!

DAWN BIOLOGIC

The family of DawnBIOLOGIC products will offer farmers a simplified means of adopting agronomic practices involving high levels of biodiversity and cover crops. These products will give the grower interested in cover crops a comprehensive toolkit including for processes including: high residue cash crop planting, precision fertilizer injection, cover crop stand establishment, cover crop termination, and strip tillage. The goal of DawnBIOLOGIC is to help bring sustainable farming practices from the experimental phase into the mainstream. To accomplish this goal, DawnBIOLOGIC will not be making equipment bigger than 6 rows wide to start. We will focus on taking a systematic approach to cover crops, and not scaling too soon.



FREEFARM



ZRX



Call Us For More Information On The Innovative Products From Dawn Equipment!



DAWN ROW CLEANERS



Trashwheel™ Row Cleaners are made of drop-forged alloy steel. They have a lifetime guarantee against bending or breaking. The simple screw-adjust mechanism allows you to fine tune your row cleaning. All Dawn hub housings, equipped with Timken tapered roller bearings, are castle nutted to our nitride coated shaft. Dawn hubs are regreaseable. Simply grease until clean grease pushes past the triple-lip seal. Dawn 15" trashwheel integrated hubs use the same bearings and seals found in the standard hub. Trashwheels are mounted between the housing and our o-ring sealed Supercap.



PART #	MODEL	PRICE
2003	14" Single Row Cleaner With 16" Coulter Combination (Great For Narrow Rows)	\$ 495.00 SALE
1572	1572 Row Cleaner/ Coulter (SPECIFY PARRALELL ARM LENGTH WHEN ORDERING)	\$ 615.00 SALE
4010	Floating Trash Wheels With Depth Bands	\$ 529.00 SALE



G SERIES GAUGE WHEEL TIRE

The Spoked rim design allows soil to flow through wheel in wet conditions. It also greatly simplifies the clearing of debris from between the gauge wheel and the opener blades. It employs a high quality two-piece pressed steel rim assembly, and high quality SKF bearings. 8 shims are included in kit. Uses OEM bolt to attach.

Model 1900 - G-Series Wide

G-Series Wide wheel is a standard 4.5" width. A direct replacement for standard Deere-type planter gauge wheels.

Model 1901 - G-Series Narrow

G-Series Narrow is similar to 1900, but has a narrow 3.25" design.

This narrow design is great for no tillers and strip tillers even if the mud cleaning qualities are not needed because it allows the planter to more easily seat itself on a cleared path.

In strip till these can be really important because in situations where the profile of the strip has sunk down the planter can be held up by the outside edge of the gauge wheel running on the untilled area.

This will produce a situation where it is difficult to firm the soil against the vee opener disk, and can result in disturbance of the seed placement. In No till situations, especially on 20" rows, these wheels make it much easier to have the gauge wheels running on a cleared path behind the row cleaner.

In general No-Tillers with central fill planters will almost always find improved performance from the narrow gauge wheels.



PART #	PRICE
1900 WIDE	\$ 300.00 PER PAIR SALE
1901 NARROW	\$ 300.00 PER PAIR SALE

MARTIN ROW CLEANERS



MODEL 1360 & C125 FLOATING ROW CLEANERS



***WITH MOUNT & 1.75" TREADERS**

\$470.00 SALE



BD 1360



BDC1360

KEY FEATURES:

- Floats along to follow ground contour.
- Threaded depth adjustment limits down travel while allowing the semi-mounted frame to **follow the contour of the land**.
- Moveable axles with **several** mounting positions (intersect/offset/retracted)
- FORGIVENESS** in less than desirable planting situations!
- 13" Diameter Wheels.

MOUNTS AVAILABLE FOR 1360 - Floating Row Cleaner:



BKW 1360



BKC 1360

BD1360	JD 7200-1700 SERIES WITHOUT COULTER ASSEMBLY
BDC1360	JD 7200-1700 SERIES WITH OEM COULTER ASSEMBLY
BKW1360	KINZE/ WHITE 8000/ 7000 JD WITHOUT COULTER
BKC1360	KINZE DOUBLE ARM COULTER ASSEMBLY
CA03D/K	CAM ADJUST OPTION FOR 1360 ROW CLEANERS (<i>ALLOWS FOR 1/4" HIEGHT ADJUSTMENT CHANGES...FAST</i>)
C125MTS	JD 7000/7200/1700 & KINZE WITHOUT COULTER
C125MTR	JD 7000-7200/KINZE/WHITE WITH MOST COULTERS
C125MTR-XP	JD 1700XP WITH UNIT MOUNTED COULTER (WILL NOT WORK WITH OEM 2X2 FERTILIZER UNITS INSTALLED)



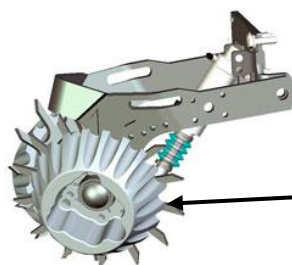
C125 MTR



C125MTS



CA-03D/K
(Optional)
\$65.00 EA.
SALE



**Precision 3.5" Wide
Treader Wheels**



Martin-Till

ORIGINAL ROW CLEANERS

Martin-Till

B1532 ROW CLEANERS WITH MOUNT

\$410.00 "SALE"

- Rigidly mounted directly to planter unit face plate
- Easily adjustable in ¼" increments with lift assist handle & spring
- 15" diameter, toothed steel wheels with diamond shaped points

B1334 ROW CLEANERS-WITH MOUNT

To Fit C-IH 800, 900, 1200 Planters

\$ 390.00 "SALE"**FEATURES:**

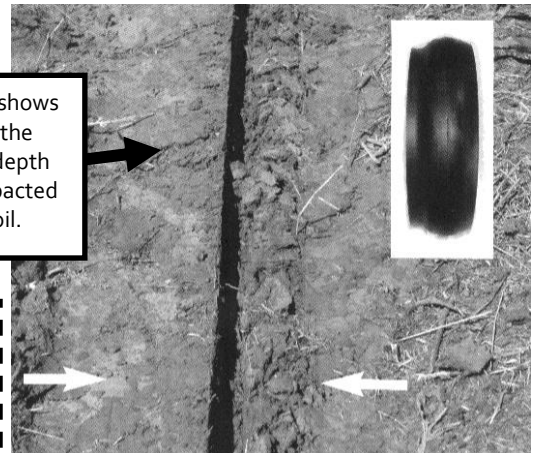
- Rigidly mounted directly to planter unit face plate
- Easily adjustable to ¼" increments with lift assist handle and spring.
- Movable axles with several mounting positions (intersect, offset, retracted)
- 13" diameter toothed steel wheels with diamond shaped points allow plenty of upward adjustment in loosely worked soils



15" Diameter
Wheels can be used
as an option.
\$ 399.00 Sale

GAUGE WHEEL TIRES RID C/IH TYPE

Left side shows
where the
regular depth
tire compacted
the soil.



***These gauge wheel tires are especially important in soils that are wet at planting time.**

***These tires allow the soil to crumble upwards instead of being compacted by standard tires.**

***These tires are more pliable, causing less compaction on the side wall area!**



Recessed Inner
Edge

**GAUGE
WHEEL TIRE
#IH4515**



INVESTING IN THESE TIRES WILL PAY 4 HUGE DIVIDENDS:

1. *Better stands*
2. *More timely planting in wetter soils*
3. *Less trench side-wall smearing*
4. *Tires partially lift soil.*

\$ 26.50 "SALE" Excellent Buy!

FEATURE ITEM!**DAWN****FEATURE ITEM!**

CURVETINE CLOSING WHEELS

The CURVETINE CLOSING WHEEL “chips-in” the sidewall compaction often produced by the vee-opener blades. It crumbles the soil and promotes lateral root penetration. The pronounced curve allows the tine to ease out of the ground without ejecting material like a straight tooth closing wheel. The thumb-like tooth will firm and provide seed-to-soil contact. This makes moisture available and prevents the appearance of air pockets around the seed.

The CURVETINE does NOT require a drag chain!

MODEL #	APPLICATION	PRICE PER PAIR
1202M	JOHN DEERE 1700 SERIES PLANTERS	\$270.00 SALE
1202M	1993-> KINZE PLANTER	\$270.00 SALE
1302MA	JD 7000/ EARLY KINZE W/ ADAPTER KIT (NON GREASABLE)	\$249.00 SALE
1303MA	JD 7200 (NON GREASABLE)	\$230.00 SALE
1220MA	JD 750/1850 NO-TILL DRILL	\$119.00 PER ROW SALE
1230	JD 1560-1895 NO-TILL DRILL	\$70.00 PER ROW SALE
300275	CASE IH SDX AIR SEEDER	\$165.00 PER ROW SALE
102540F	CURVETINE WHEEL ONLY	\$70.00 SALE

BEST VALUE CURVETINE ON THE MARKET!

1303B-MA



- *ALUMINUM NON-GREASABLE HUB
- *40 MM. DOUBLE ROLLER BEARING
- *MADE TO FIT BOLT-ON CLOSING FRAMES FOR JD, KINZE, WHITE, AND GREAT PLAINS.

\$230.00 PER PAIR “SALE”



SHOWN WITH OPTIONAL
RUBBER WHEEL.
\$55.00 EACH SALE



1202M



1230



1220MA

**DAWN**

PRICES ARE SUBJECT TO CHANGE WITHOUT NOTICE.

DAWN

13" SPADE CLOSING WHEELS

The Spading-Closing Wheels move soil toward the seed at planting depth, while lifting and fracturing the surface layer to achieve compaction-free closing of the seed trench in wet, hard or sod conditions. With soil firmed around the seed from each side and the surface layer loosened, crops emerge sooner and planting can be done at the proper depth, even in wetter conditions, without fear of crushing the soil above the seed which would prevent emergence.



SCW1370 – 13" - \$ 219.00 SALE



- To Fit JD7000, Early KINZE
- Original 3 Bolt(**Aluminum Hub Design**)
- Uses Gold Axles with 1/4" Roll Pin Hole
- 2 - 5/8" Bearings

SCW1372 – 13" - \$ 210.00 SALE



- To Fit JD7200-7300
- Original 3 Bolt, **Aluminum Hub Design**
- 2 – 5/8" Bearings

SCW1374 – 13" - \$ 210.00 SALE



- To Fit All 1700, Late White, Late Kinze, Great Plains
- Original 3 Bolt, **Aluminum Hub Design**
- 40 mm Bearing



Open trench due
to the use of
Rubber closing
wheels!

CAST HUB - 4 BOLT STYLE

SCW1341 - 13" - \$ 239.00 SALE



- For planters with roll-pin attached closing wheels: JD7000 & 7100 Series, Early Kinze
- 13" diameter right and left toothed steel wheels w/diamond shaped points
- CAST HUBS**
- Use adapter axles with 1/4" Roll Pin
- 2 - 5/8" bearings

SCW1343 - 13" - \$ 225.00 SALE



- For JD 7200-7300 series planters
- 13" diameter right and left toothed steel wheel
- CAST HUBS**
- 2 – 5/8" bearings

SCW1344 - 13" - \$ 225.00 SALE



- For planters with bolt-on closing wheels: JD1700 series, Kinze & White 6000 & 8000 series, Great Plains
- 13" diameter right and left toothed steel wheels w/diamond shaped points
- CAST HUBS**
- 40mm bearings



SCW51/61
WHITE 5100/6100
SPIKE CLOSING
PAIR
\$259.00 SALE



Trench closed
using Spike
closing wheels!

SCW899 CASE IH SPADE WHEEL



CASE IH 800-1250

\$117.00 Per Pair Sale



Call us for application details, and set up on your No-Till machine!

15" SINGLE SPADE WHEELS

USED ALONG SIDE ORIGINAL 12" RUBBER CLOSING WHEEL

1. 15" Spading Wheels crumble the side wall on one side of the seed trench while the rubber closing wheel firms the other side of the trench.
2. Good for producers who have both no-till & conventional corn.
3. Desirable for ground that dries more quickly than normal
4. Excellent for soybean planters
5. Does not normally require a drag chain!

SCW1570 – 15" - \$ 120.00 SALE



- To Fit JD7000, Early Kinze
- Original 3 Bolt - Aluminum Hub Design
- Uses Gold axle with 1/4" Roll Pin Hole
- 2 – 5/8" Bearings



SCW1572 – 15" - \$ 114.00 SALE



- To Fit JD7200
- Original 3 Bolt - Aluminum Hub Design
- 2 – 5/8" Bearings

SCW1574 – 15" - \$ 114.00 SALE



- To Fit JD1700, Later White, Later Kinze, Great Plains
- Original 3 Bolt - Aluminum Hub Design
- Uses 40mm Bearing w/ spacers included

Martin-Till



CAST HUB-4 BOLT STYLE

SCW1541 – 15" - \$ 128.00 SALE



- To Fit Deere 7000 & 7100 series & early Kinze planters
- Cast hub
- Uses gold axle with 1/4" Roll Pin
- Two 5/8" bearing



SCW1543 – 15" - \$ 123.00 SALE



- To Fit Deere 7200 & 7300 planters
- Cast hub
- Two 5/8" bearings
- Requires 4 bolt spacer to move out 15" wheel

SCW1544 – 15" - \$ 118.00 SALE



- To Fit JD1700 series, late Kinze & White 6000 & 8000 Planters.
- Great Plains
- Cast hub
- 40mm bearing

SPADING WHEEL SCRAPERS

*Used in wet, weedy environments.

*Cover Crops that are tall, and thick with roots.

ITDSCWR...\$13.95 "SALE"

ITDSCWL...\$13.95 "SALE"



***PLEASE SPECIFY CLOSING FRAME STYLE WHEN ORDERING TO INSURE PROPER FIT!**

JD DRILL SPADE CLOSING WHEELS

13" SPADE CLOSING WHEEL

SCW75B ----- \$ 109.00 SALE



- 3/8" thick, 13" diameter right or left toothed steel wheel with diamond shaped points
- 40mm bearing/3 bolt aluminum hub
- Double threaded specially designed axle
- Fits Deere 750 and 1850 drills
- Creates a miniature ridge that sheds water and helps maintain a warmer seed environment

SCW156 ----- \$ 85.50 SALE



- 3/8" thick, 13" diameter right or left toothed steel wheel with diamond shaped points
- Fits 1560, 1860, 1590, and 1890 drills
- Creates a miniature ridge that sheds water and helps maintain a warmer seed environment

CAST HUB SPADING
WHEEL.....\$118.00 SALE



"CAST" WHEEL

Martin-Till

"SPIKE" WHEEL



13"- 20 DIMPLE CLOSING WHEEL

SCW750B4D-20 - \$ 125.00 SALE

- 1/2" thick, 13" diameter steel wheel with 20 pointed teeth
- Firms soil at points while leaving looser area between points
- Cast Hub with 40mm. Bearing
- Less aggressive than above spading wheels
- Fits JD 750 and 1850 drills

SCW1564D-20 - \$ 94.00 SALE

- 1/2" thick, 13" diameter steel wheel with 20 pointed teeth
- Firms soil at points while leaving looser area between points
- Less aggressive than above spading wheels
- Fits 1560, 1860, 1590 and 1890 drills



Martin-Till



NEEDHAM AG V8 FIRMING WHEEL

8" WHEEL TO REPLACE O.E.M. 10" SEED PRESS WHEEL!



*Corrects issues with original seed press wheel which rides on the side wall rather than pressing the seed to the bottom of the trench.

*Matches the seed trench to set the seed on the proper side of the seed boot.

*Utilizes 5203 HD bearing for longer service life.

*Made to fit JD 750,1560,1590,1850,1890 No-Till grain drills.

\$41.95 SALE W/HARDWARE

NEEDHAM AG SEED FIRMING STRIP



*Bonilla Seed Tabs are slightly over twice as thick as factory seed tabs and they are also angled at 7° to follow the seed slot. This enables them to retain more seeds within the seed slot and help reduce wear over time.

\$4.50 EA. SALE



YETTER MANUFACTURING

No-till fertilizer placement systems!



PART #	DESCRIPTION	PRICE
2975-220	17" Liquid Trailing Knife	\$ 44.50 SALE
2975-232	17" Dry Fertilizer Knife	\$ 53.00 SALE
2996-200	20" Liquid Trailing Knife	\$ 54.00 SALE
HYLFCI4	17" Liquid Trailing Knife (LONG WEAR)	\$ 37.50 SALE
HYLFC20	20" Liquid Trailing Knife (LONG WEAR)	\$ 42.50 SALE
Fert Opener	2995-17" Fertilizer opener w/Trailing Knife	\$ 430.00 SALE
Fert Opener	2995-17" DRY Fert. opener w/Trailing Knife	\$459.00 SALE
Fert Opener	2995-17" Fertilizer opener w/Injector	\$ 440.00 SALE

We stock many other YETTER parts in the fertilizer attachment & residue manager areas.

LIQUID REAR KNIFE



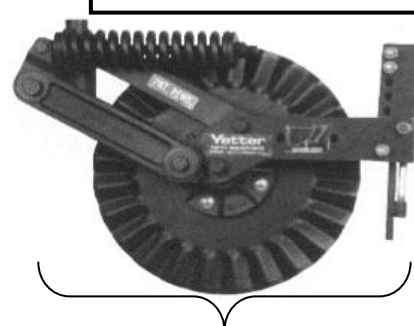
30" CLEARANCE

DRY REAR KNIFE



34.5" CLEARANCE

LIQUID REAR INJECTOR



30" CLEARANCE



YETTER RESIDUE MANAGER



2967-028

2967-028	PIN ADJUST FIXED STYLE ROW CLEANER WITH MOUNT, AND STANDARD WHEELS: JD 7000,7200,1700/ KINZE 2000-3000 SER. WHITE 6100-8000 SER.	\$279.00 EA. SALE
2967-029	SHORT MOUNT FLOATER:JD 7000-1700/ KINZE/WHITE6100-8000 (SHARK TOOTH WHEELS/ SIDE TREADER WHEELS)	\$425.00 EA. SALE
2967-035	WRAP AROUND FLOATER FOR USE WITH FACTORY COULTER WITH TREADER WHEELS:JD 7000/ KINZE/ WHITE 6100-8000	\$399.00 EA. SALE
2967-043	WRAP AROUND FLOATER FOR USE WITH O.E.M. COULTER: JD 7200-1700 (PRICED WITH TREADER WHEELS)	\$499.00 EA. SALE



2967-035



2967-029



2967-035



2967-043

YETTER MARKER KITS FOR 750 DRILL



6150-750 FLAT FOLD MARKER KIT 15'
(ADDITIONAL HYDRAULIC HOSE NEEDED)

\$2795.00 SALE

We stock parts and sell complete assemblies!





Consistent depth control is the most important job of your planter. Even the best maintained planter can still have a depth variation of ½" or more.

Keeton® Seed Firmers gently set seeds to the bottom of the trench. A thin piece of poly slides down the seed trench, trapping seeds as they exit the seed tube and firming them into the bottom of the "V".



PLANTER MOUNTED



GRAIN DRILL MOUNTED



PART #	MOUNTING / TAIL TYPE	PRICE
125012	UNIVERSAL DRY	\$34.00 "SALE"
125013	KINZE DRY	\$34.00 "SALE"
115011	UNIVERSAL DUAL TUBE	\$34.00 "SALE"
115012	KINZE DUAL TUBE	\$34.00 "SALE"
126008	UNIVERSAL LOW PRO	\$34.00 "SALE"
126009	KINZE LOW PRO	\$34.00 "SALE"
126010/115013/125011	REPLACEMENT TAIL	\$29.00 "SALE"

PART #	APPLICATION	PRICE
120103	GP 1500	\$29.50 "SALE"
120121	CIH 5400	\$29.50 "SALE"
120133	JD 750/1850	\$35.50 "SALE"
120134	JD 1560-90	\$35.50 "SALE"

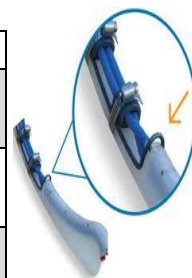
SEED TUBE MOUNTED

PART #	APPLICATION	PRICE
100101	DRY TAIL	\$31.50 "SALE"
100104	LIQUID TAIL	\$32.50 "SALE"



"MOJO" WIRES FOR KEETON FIRMERS

PART #	APPLICATION	PRICE
K100	FITS ORIGINAL P100 SEED TUBE MOUNT TAILS	\$24.50 "SALE"
K200	FITS EARLY DRY AND DUAL TAIL (NON WAVE VISION)	\$22.50 "SALE"
K211	FITS LATE DRY AND DUAL TAIL (WAVE VISION STYLE)	\$22.50 "SALE"



Poor meter performance = lost yield

You should be getting 98% or better accuracy from your meters, but typical meters run at only 92%-97%. When each additional percentage point is worth another bushel or two for every acre, there's plenty of room for improvement.

What's the accuracy on *your* meters?

Precision
PLANTING

Let us put one of your meters on the MeterMax® Ultra test stand where we can show the yield robbing issues you may face. Then, if your meters are off, you can regain lost yield with a complete calibration. Here's how it works.

The meter is mounted on the MeterMax Ultra test stand, filled with the type and size of seed you're going to plant. The connected 20/20 SeedSense® monitor precisely records the performance using your population and planting speeds. **You see the results!**

The meter is then adjusted – cleaned, balanced and repaired as necessary – and tested again, until all the errors are eliminated and your lost yield is restored. Past experience shows an average 5.7 bushel-per-acre improvement.

Here is data from independent field trials comparing calibrated and non-calibrated finger pick-up meters.

Pass #	Meter Status	# of points	Acres	Average BPA
1	non-calibrated	50	0.089	181.46
2	calibrated	53	0.090	193.11
3	calibrated	58	0.095	190.70
4	non-calibrated	89	0.152	184.29
5	non-calibrated	91	0.161	183.24
6	calibrated	98	0.164	192.08
7	calibrated	95	0.157	192.05
8	non-calibrated	142	0.223	184.52
9	non-calibrated	140	0.223	180.16
10	calibrated	150	0.221	183.61
11	non-calibrated	154	0.239	180.56
Average Non-calibrated				182.33
Calibrated				190.31
Calibrated Meter Advantage				7.98

MeterMax[®] Ultra
TEST STAND



"The best investment we have ever made is meter calibration....We wouldn't dream of going to the field without putting our meters on this test stand."

Don't put it off. See us today for a FREE meter evaluation and for the meter calibration that restores the yield you're losing now.



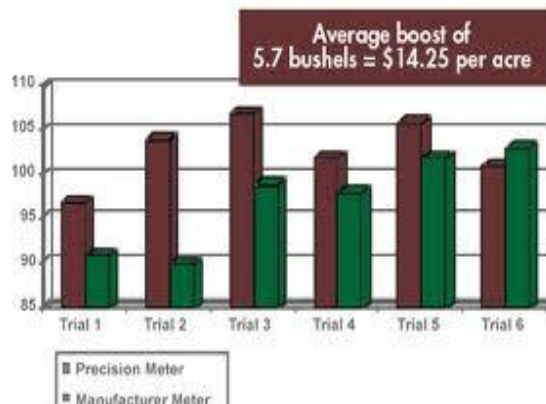
FINGER METERS



Precision Meters are engineered and built to do it again and again. Ordinary finger meters have a hard time doing that (singulating), especially with a wide variety of seeds. They'll miss one, then grab two, resulting in skips and doubles. That wastes seeds, robs yield and steals your money.

The key features of the Precision Meter are;

- Adjustable Brush**...allows fine tuning for different seed sizes and shapes.
- Precision Finger Set**...loads and holds a single seed due to tougher spring and properly formed flag.
- Population Max** backing plate...rigid so to stabilize the fingers.
- Skip Stop**...cushioning prevents the seed from ricocheting back into the seed pool.
- Sure Fire**...seed belt delivers the seed down the center of the tube increasing excellent seed spacing.



PART #	DESCRIPTION	PRICE	PRICE W/ TUBE
343022	7000 / EARLY KINZE	\$180.00 SALE	\$190.00 SALE
345030	KINZE 3000 SERIES	\$180.00 SALE	\$190.00 SALE
343025	JOHN DEERE 7200-1700	\$180.00 SALE	\$190.00 SALE



343022



343024



345030



BULLSEYE SEED TUBE

- Reduces Seed Ricochet
- TUNGSTEN WEAR PINS
- NO SENSOR INTERFERENCE

\$ 16.50 EA. SALE



343052



343110



343066

METER REPLACEMENT PARTS

PART #	DESCRIPTION	PRICE
343052	METER BRUSH (ADJUSTABLE)	\$ 10.00 SALE
342110	"A" INSERT	\$ 7.50 SALE
342103	POP MAX BACKING PLATE	\$ 38.00 SALE
343029	FINGER SET	\$ 37.00 SALE
343066	SURE FIRE BELT	\$ 14.00 SALE
343024	SKIP STOP BACKING PLATE KIT	\$ 23.00 SALE
343014	SKIP STOP CUSHION	\$ 16.50 SALE

See Us For The Latest Advancements In Meter Calibration!



343029



343014



343024





vSet Vac Meter



Choose higher accuracy, more flexibility and longer life.

While many prefer mechanical finger meters, many others are switching to vacuum meters – especially Precision Planting's eSets – because they:

- Plant a wider variety of seed sizes and shapes
- Plant a wider variety of types of seeds with a simple disk change
- Plant at a wider range of speeds
- Have lower wear and less maintenance costs



Now, the new vSet vacuum meter system offers current finger meter users improved singulation, more convenience, longer wear life and greater seed flexibility. And Kinze EdgeVac® owners will appreciate vSet's adjustment-free high performance.

Precision Planting's eSet® system raised meter performance expectations to new new level of excellence; however, this system was limited to Deere vacuum meters. Now, with vSet, there is high performance, pour and go meter for a wider variety of planters allowing you to pair the right planter for your operation without sacrificing meter performance.



PLANTER CONVERSION OPTIONS AVAILABLE

FOR:

- JOHN DEERE 7000-1700
- KINZE
- CASE IH 1200
- WHITE 8000

CALL FOR CURRENT PRICING!



eSet Vac Meter Conversion

FOR JOHN DEERE LATE 7200-1700 VAC PLANTERS

Every Seed. Every Time!



The John Deere cell disc is very sensitive to seed shape because of the pocket. Only a few seed types fit perfectly in the pocket. That's why you have to keep adjusting vacuum levels to try to suck most seeds against the pocket. With eSets flat disk design, there is not a pocket so flats, rounds, large and small work equally well.

The most frustrating thing about current vac disks is that you are always guessing about your vac setting. Too little and you skip. Too much and you double. But your monitor only shows you an average population – so you can't judge accuracy until your seed emerges.

With eSet, you set your vac and you can plant any seed – even plateless – at 99% accuracy or better. If you seed is over 60# per 80,000 seed bag, use 18". Size, weight, shape, treatments, humidity . . . doesn't matter. And unlike early flat disk designs, you don't adjust this singulator. It is designed to float and self correct so it is always in the right place at the right time.

- **Singulate any seed size or shape** — there's no pocket or cell, which means the disk is not seed sensitive.
- **Improved seed release** — the raised platform means seeds release down the center of the seed tube minimizing seed tube ricochet.
- **No adjustments** — you get 99%+ singulation on almost every seed type without adjusting vac or double eliminators.
- **Better seed agitation** — seed treatments can inhibit singulation because seeds pack together at the bottom of the meter. eSet has aggressive seed agitation that keeps the seed pool fluid for better loading.



**720242 -STANDARD KIT
W/ TUBE
\$133.00 SALE**



**720136 -PRO SERIES
KIT W/ TUBE
\$147.00 SALE**



ULTRAWING SWEEP

- Retain Their Width!
- Full parallel wing edges
- Keep Their Noses Pointed!
- Curved Wing Surface For Strength!
- Curved leading edge for good sweeping action!



BOLT-ON *ULTRAWING* CULTIVATOR SWEEPS



PART #	SIZE	ANGLE	PRICE EA.
TFC 47UW7B7	7 X 1/4"	47°	\$ 7.50 SALE
TFC 47UW8B7	8 X 1/4"	47°	\$ 7.75 SALE
TFC 47UW9B7	9 X 1/4"	47°	\$ 8.00 SALE
TFC 47UW10B7	10 X 1/4"	47°	\$ 8.75 SALE
FC 52UW8B7	8 X 1/4" (AC)	52°	\$ 7.75 SALE
TFC 52UW9B7	9 X 1/4" (AC)	52°	\$ 8.25 SALE
TFC 43UW7B7	7 X 1/4" (JD)	43°	\$ 8.25 SALE
TFC 43UW9B7	9X 1/4" (JD)	43°	\$ 8.75 SALE



DRIVE-ON *ULTRAWING* CULTIVATOR SWEEPS

MODEL #	SIZE	PRICE EA.
TFC UWQC7B	7" X 1/4"	\$ 7.50 SALE
TFC UWQC8B	8" X 1/4"	\$ 7.75 SALE
TFC UWQC9B	9" X 1/4"	\$ 8.00 SALE
TFC UWQC10B	10" X 1/4"	\$ 8.75 SALE
TFC Q3341	43° KNOCK ON BRACKET	\$ 1.50 SALE
TFC Q2747	47° KNOCK ON BRACKET	\$ 1.50 SALE
TFC Q12747	47° KNOCK ON BRACKET	\$ 1.50 SALE



POLY SHANK PROTECTORS

CWP14134P

- Exclusive wrap around design wider in wide areas
- Universal Hole Punch-Fits all field cultivators
- U.H.M.W. Poly sheds weeds, trash, protects valuable cultivator shanks
- Made of **WHITE VIRGIN MATERIAL**

\$1.70 EA.

\$1.60 EA. FOR 20+



PLOW BOLTS

3/8" X 1 1/2" SP (25 CT.).....	\$ 10.00
3/8" X 1 3/4" SP (25CT.).....	\$ 12.50
7/16" X 1 1/4" (25CT.).....	\$ 10.75
7/16" X 1 1/2" (25CT.).....	\$ 11.50
7/16" X 1 1/4" (50CT.).....	\$ 19.95
7/16" X 1 1/2" (50CT.).....	\$ 20.50

"Clearance" Cultivator Shovels 5/16" Thick

MW47516-7 7"(Limited Qty)--- \$ 5.00 SALE

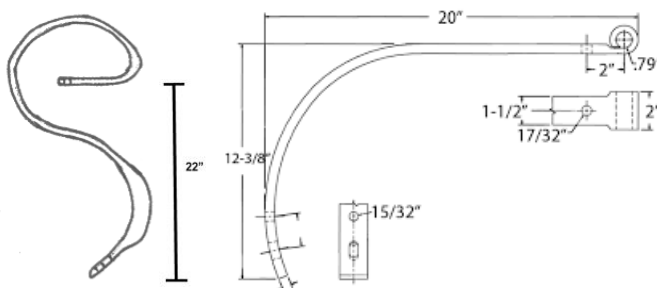
MW47516-8 8"(Limited Qty)--- \$ 5.50 SALE

WCC9B714 9" (Limited Qty)---- \$ 5.00 SALE

CALL FOR CURRENT AVAILABILITY!

FIELD CULTIVATOR REPLACEMENT SHANKS

PART #	DESCRIPTION	PRICE
HSP55E0	Low Draft FC Shank	\$ 59.50
BRS5217B	IH VIBRA SHANK	\$ 37.50
CF212	2 1/2" Square Clamp	\$ 6.95
CF33	3" Square Clamp	\$ 8.95



HARROW SPIKES

560247 3/4" X 11" Square \$ 3.45



U-BOLT W/ NUTS

**\$.95 EA.**

BLADES - SHALLOW CONCAVITY

To Fit Krause, Sunflower, Kent & Landoll Soil Finishing Tools

2006112RSH	20" x 6 ga x 1 1/2" Round Blade	\$ 39.95 SALE
2006134RSH	20" x 6 ga x 1 3/4" Round Blade	\$ 39.95 SALE
2014134RSH	20" X 1/4" X 1 3/4" Round Blade	\$ 46.75 SALE



BEARINGS FOR SHALLOW CONCAVITY FINISHERS

PART #	SHAFT SIZE	TO FIT	PRICE
ST 491B	1 1/2" Round	Sunflower, Krause, Kent, Landoll, Glenco	\$ 29.95
ST 491A	1 3/4" Round	C-IH	\$ 25.50
P1927110 ("With Rubber Cover)	1 1/2" Round	Krause	\$ 46.00

Rubber Cover
StyleFlangette
Style

DISC BLADES



ITEM	SIZE	PRICE
TDB1611781S	16" X 11 ga x 7/8" x 1"sq	\$ 16.50
TDB16111118S	16" X 11 ga x 1" x 1 1/8"sq	\$ 16.50
TDB16091118S	16" X 9 ga x 1 1/8"sq	\$ 17.95
TDB18091814S	18" X 9 ga X 1 1/8" x 1 1/4 sq	\$ 23.30
TDB18071814S	18" X 7 ga X 1 1/8" x 1 1/4" sq	\$ 28.50
TDB20071814S	20" X 7 ga X 1 1/8" x 1 1/4" sq	\$ 33.95
TDB2007112RS	20" X 3/16" X 1 1/2" Round	\$ 34.95
TDB20316S	20" X 3/16" X 1 1/8" x 1 1/4" sq	\$ 34.95
TDB22061814S	22" X 7 ga x 1 1/8" x 1 1/4" sq	\$ 39.85
TDB2214134RS	22" X 1/4" X 1 3/4" round Sunflower	\$ 49.95

***ALL BLADES ARE MADE OF BORON STEEL, WHICH ALLOWS US TO WARRANTY THEM DOWN TO ONE INCH FROM THEIR ORIGINAL SIZE.**

BLADES - TO FIT M & W EARTHMASTER

TDB2214125S	22" X 1/4" X 1 1/2" square	\$ 49.75 SALE
-------------	----------------------------	---------------

BLADES - DEEP CONED TO FIT JD

TDBD20071814C	20" X 3/16" X 1 1/8" or 1 1/4" sq	\$ 40.50
---------------	-----------------------------------	----------



Deep
Coned

BLADES - FLAT CENTER TO FIT C/IH

WF 1808 1118S	18" x 9 ga x 1 x 1 1/8"	\$ 28.50 SALE
WF 20316 1118S	20" x 3/16" x 1 1/8" x 1 1/4" (THICKER THAN 7 GAUGE)	\$ 34.95 SALE
WF 2006 112RS	20" x 6 ga x 1 1/2" round	\$ 35.95 SALE
WF 22X14 112RS	22" x 1/4" x 1 1/2" round	\$ 53.50 SALE



Flat Center

We have Disc Spools, Arbors, Scrapers, etc. Available! See Page 13 and 14.

BLADES - TO FIT DMI, C-IH, NH RIPPERS

P20197DMIS	20" X 1/4" thick 5 hole Pattern	\$ 46.50 SALE
P2214DMIS	22" X 1/4" thick 5 Hole Pattern	\$ 53.50 SALE

DISC BEARINGS

BGW208PPB5	Greaseable 1 1/8" Square Shaft, Oliver, etc.	\$ 23.50
BW208PPB5	Sealed 1 1/8" Square Shaft, Oliver, etc	\$ 23.50
BGW208PPB8	Greaseable 1 1/8" Square Shaft, White, etc	\$ 23.50
BW208PPB8	Sealed 1 1/8" Square Shaft, White, etc	\$ 23.50
BGW209PPB11	Greaseable 1 1/8" Square Shaft, JD	\$ 19.95
ST491A-USA	Greaseable C/IH Disc-Fits 1 1/8" Shaft-USA	\$ 40.95
ST491A	Greaseable C/IH Disc-Fits 1 1/8" Shaft	\$ 25.50
ST491B-USA	Greaseable Kent, Krause-1 1/2" Round USA	\$ 46.50
ST491B	Greaseable Kent, Krause-1 1/2" Round Shaft	\$ 29.95
DS209TTR6P	Greaseable Krause 1 1/2 Round Shaft (Rubber Cover)	\$ 46.00



OTHER BEARINGS ARE AVAILABLE!

BEARING KITS FOR JD/GREAT PLAINS

PART #	HOLE SIZE	TO FIT MODEL	PRICE
ST209134JD	1 3/4 Round	210, 215, 220, 230, 235, 630 & 722 Finisher, G/PL Turbo Till With Standard Gang	\$ 35.95
ST211231JD	2 3/16 Round	315, 335, 510, 635, 640, 650 & 670. Also 512 Ripper	\$ 49.95
C28474		Cast Bearing Guard-Fits Round Flange Sets	\$ 7.95



DISC ARBOR BOLTS

To Fit JD 1 1/8" Square Shafts

Order #	Partial OEM #'s	Length	Price
A4175	Replaces JD # A20132	41.75"	\$ 58.50
A5075	Replaces JD # A20133	50.75"	\$ 65.50
A5970	Replaces JD # A20134	59.70"	\$ 74.00
A6870	Replaces JD # A20615	68.70"	\$ 77.00
A7770	Replaces JD # A20616	77.70"	\$ 86.00
A8700	Replaces JD # A20617	87.00"	\$ 93.00
A9570	Replaces JD # A40826	95.70"	\$ 102.00
A10475	Replaces JD # A40827	104.75"	\$ 122.00



These disc arbors are also used on White, Kewanee and other disc harrows with 1 1/8" square shafts.

JD DISC SCRAPER

PART #	DESCRIPTION	PRICE
20006	Scraper Blade Replacement. Fits Models # 110, 111, 115, 210, 220, 230	\$ 6.75
38364	Scraper Blade Replacement. Fits Models # 215, 235, 627, 630, 635, 637, 722 Mulch Finisher	\$ 5.90
22389	SPRING TO FIT Fits Models # 215, 235, 627, 630, 635, 637, 722 Mulch Finisher	\$ 4.75



JD230



JD630

DISC HARROW PARTS TO FIT JD

<p>#P20647-Replaces # A20647 -Sleeve, 6-11/16" -Fits Models with 7-1/4" Spacing</p> <p>\$ 6.25</p>	<p>#P20648-Replaces # A20648 -Sleeve, 8-1/2" -Fits Models with 9" Spacing</p> <p>\$ 6.95</p>	<p>#P25694-Replaces # A25694 -Bumper Washer</p> <p>\$ 8.50</p>
<p>#P241315-Replaces # A20621-N241315 -1 7/8" Spool</p> <p>\$ 13.50</p>	<p>#P241318-Replaces # A20622-N241318 -3.8" Spool</p> <p>\$ 17.50</p>	<p>#P241314-Replaces # A37023-N241314 -5 1/2" Spool</p> <p>\$ 18.95</p>
<p>#P183629-Replaces # AN183629 -Double Spool -Fits Models with 9" Spacing</p> <p>\$ 29.90</p>	<p>#P183748-Replaces # AN183748 -Double Spool -Fits Models with 7 1/4" Spacing</p> <p>\$ 28.95</p>	<p>#P34102 -Slack Washer for 1 1/8" Square Axle -1/4" Thick</p> <p>\$ 4.95</p>

Prices are subject to change without notice.

DISC ARBOR BOLTS

To Fit C-IH 1 1/8" Square Shafts

Order #	Partial OEM #'s	Length	Price
A4025	Replaces C-IH # 468607R1	40.25"	\$ 59.50
A4900	Replaces C-IH # 471014R1	49.00"	\$ 63.00
A5760	Replaces C-IH # 471015R1	57.60"	\$ 71.00
A6740	Replaces C-IH # 652939R2	67.40"	\$ 77.00
A7190	Replaces C-IH # 472586R2	71.90"	\$ 79.00
A7640	Replaces C-IH # 468582R2	76.40"	\$ 84.00
A7940	Replaces C-IH # 468583R2	79.40"	\$ 87.00
A8550	Replaces C-IH # 481844R1	85.50"	\$ 91.00
A9460	Replaces C-IH # 487168R1	94.60"	\$ 105.00
A10340 *	Replaces C-IH # 58829C1	103.4"	\$ 116.00
A11270 *	Replaces C-IH # 546831R1	112.5"	\$ 122.00
A12180 *	Replaces C-IH # 57000C1	121.5"	\$ 125.00



These disc arbors can also be used on White, Kewanee and other disc harrows with 1 1/8" square shafts.

DISC HARROW PARTS TO FIT C-IH

<p>#P652383-Replaces # 652383R1 -5 1/16" Sleeve for models with 7 1/2" spacing</p> <p>\$ 4.50</p>	<p>#P472594-Replaces # 472594R1 -6 1/16" Sleeve for models with 9" spacing</p> <p>\$ 5.90</p>	<p>#P652412-Replaces # 652412R1 -7 1/4" Sleeve for models with 7 1/2" spacing</p> <p>\$ 6.95</p>
<p>#P112410-Replaces # 112410C1 -8 3/4" Sleeve for models with 9" Spacing</p> <p>\$ 7.20</p>	<p>#P468584-Replaces # 468584R2 -Bumper Washer for models with 1 1/8" Square Axle</p> <p>\$ 21.50</p>	<p>#P481611-Replaces # 481611R1 -End Washer for models with 1 1/8" Square Axle</p> <p>\$ 7.50</p>
<p>#P4167-Replaces # PA4167 -End Washer for models with 1 1/8" Square Axle</p> <p>\$ 8.50</p>	<p>#P472592-Replaces # 472592R3 -1 5/8" long Square Hole Spool for models with 7 1/2" spacing</p> <p>\$ 11.50</p>	<p>#P472593-Replaces # 472593R3 -3" long Square Hole Spool for models with 9" spacing</p> <p>\$ 12.95</p>
<p>P472591-Replaces # 472591R3 -4" long Square Hole Spool for models with 7 1/2" & 9" spacing</p> <p>\$ 13.75</p>	<p>P101189-Replaces # 101189C1 -1 5/8" long Round Hole Spool for models with 7 1/2" spacing</p> <p>\$ 9.95</p>	<p>P101190-Replaces # 101190C1 -3" long Round Hole Spool for models with 9" spacing</p> <p>\$ 11.25</p>
<p>P101191-Replaces # 101191C1 -4" long Round Hole Spool for models with 7 1/2" & 9" spacing</p> <p>\$ 12.25</p>	<p>P481416-Replaces # 481416R1 -7 1/2" Square Hole Spool for models with 7 1/2" spacing</p> <p>\$ 24.95</p>	<p>P481417-Replaces # 481417R1 -9" Square Hole Spool for models with 9" spacing</p> <p>\$ 25.50</p>