

# Column-OTL™ Interbody System



Oblique Transforaminal Lumbar Interbody Fusion Device

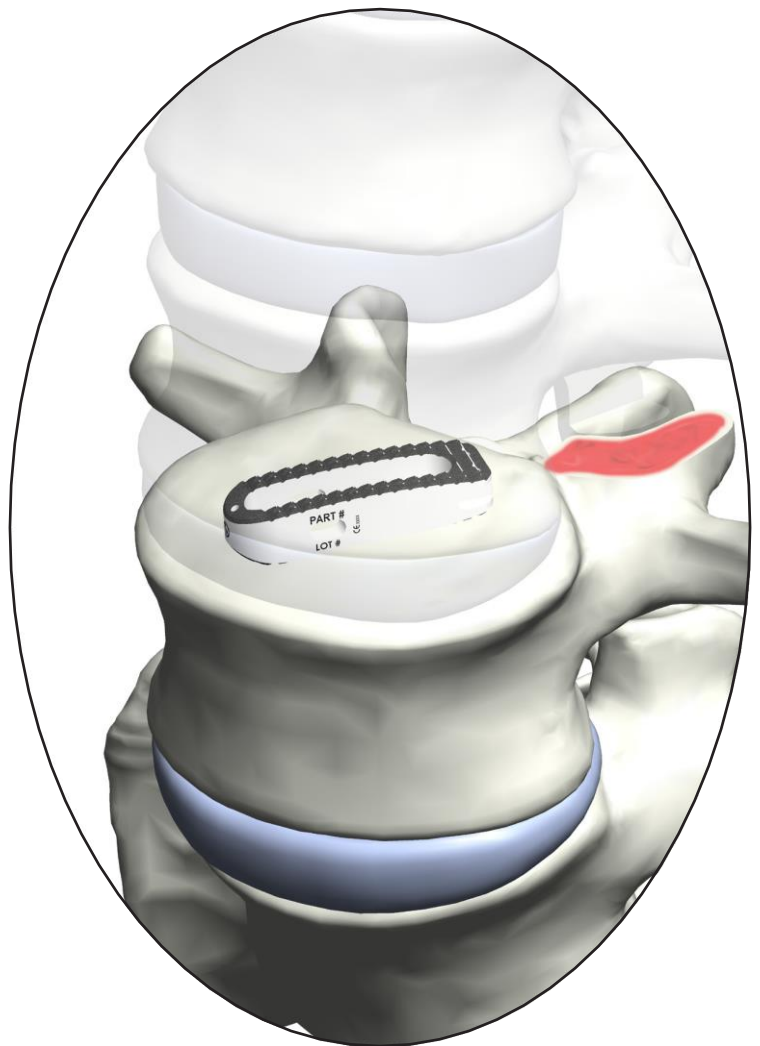
**Anatomical Endplate Contact**

**Large Graft Window**

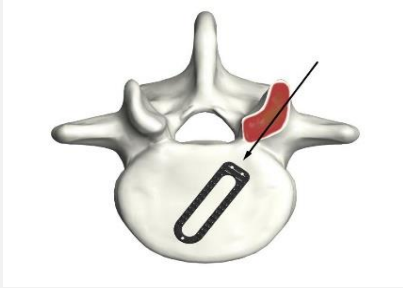
**PEEK-Optima™ Core**

**Simple Instrumentation**

**Titanium Plasma Spray Option**



**MedTech  
Innovations, LLC™**



- Convex Design to Maximize Endplate Contact
- Optimized Teeth to Prevent Migration
- Titanium Plasma Spray Option
- Manufactured of PEEK -Optima™
- Multiple Footprints
- Sterile and Non-Sterile Packaging Options
- Two Approach Options: Oblique TLIF or PLIF

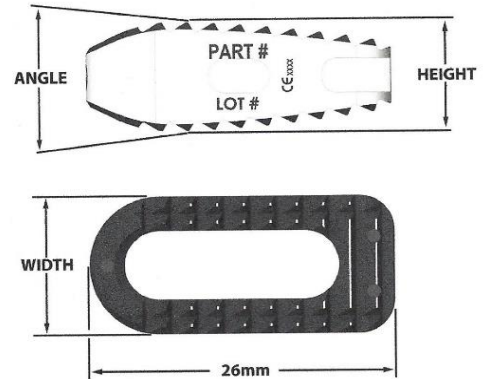


### Multiple Footprints

Lengths: 22, 24, 26 and 32mm

Widths: 8, 10 and 12mm

Lordosis: 0, 4 and 8 Degrees



### Versatile Insertion Options



Straight Inserter



Offset Inserter

