

Fountasia™

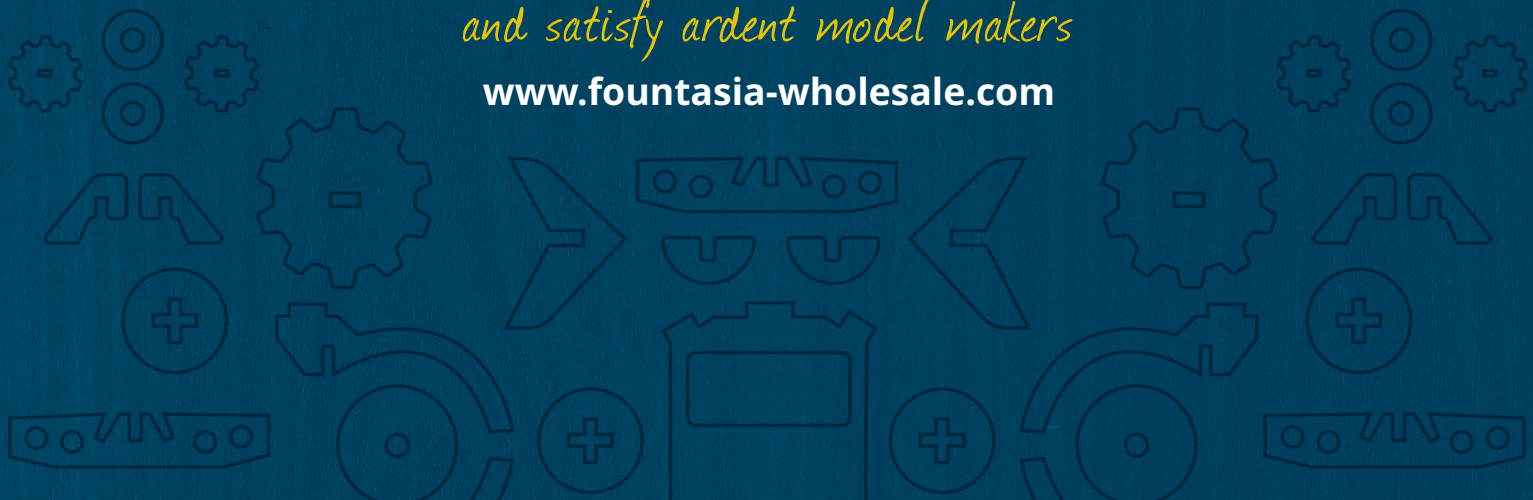
WHOLESALE

ROBOTIME

2021

*Products to inspire enquiring minds
and satisfy ardent model makers*

www.fountasia-wholesale.com



Fountasia™

WHOLESALE

ROBOTIME

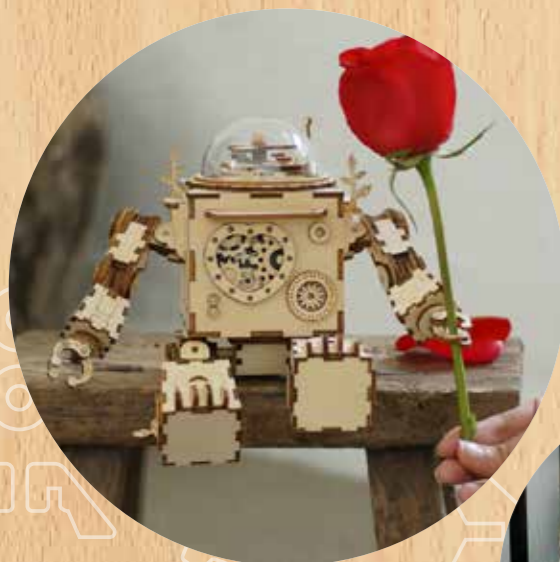
2021

ROBOTIME, a unique and diverse collection of intricately laser cut 3-D scale models.

Age is no barrier to an enquiring mind with model options specially selected for children aged 3+ increasing in complexity for older children and adults. Something for everyone to take pride and satisfaction from making these beautiful models, many of which are destined to become treasured items of home décor.

Enter the Robotime world of super-tech model making to create familiar images or state-of-the-art technical and mechanical designs. Here you will find smart MECHANICAL models created with blueprint accuracy in copious detail to educate and inform enquiring minds about how things work. Imaginative INTERIOR DESIGNS feature miniature lifestyle scenes in extraordinary detail to stimulate imagination, fine tune manual dexterity and inspire creativity. The popular CLASSIC range is a comprehensive selection of laser-cut models to make and display with pride. Models in PRIMARY is the place to inspire and satisfy enquiring young minds with impressive models created in a few simple steps. The INSPIRATIONAL collection is regularly updated with creative social and environmental subjects. Today, we are inspired by musical boxes making models and music.

Robotime models are designed to be environmentally friendly, the majority may be assembled without glue or chemicals. The precision-cut numbered pieces are cross referenced to 'easy to follow' illustrated instructions books and cleverly and carefully packaged with everything required to make the model in the box.



Page



INTERIOR DESIGN

age 14+

Interior design in miniature with lifestyle accessories

4-11



CLASSIC

age 8+

Popular laser cut models to make and display with pride

12-19



MECHANICAL

age 14+

Working models for enquiring minds and aspiring model makers

20-27



PRIMARY

age 3+

The first step to inspire & satisfy enquiring young minds

28-33



INSPIRATIONS

age 14+

Creative models including musical boxes to inspire and make magical memories

34-37

RETAIL DISPLAY OPTIONS

38-39



INTERIOR DESIGN

Interior Design projects that inspire creativity and develop interior design skills. This exciting series of miniature scale models with copious attention to detail includes designs for living, popular boutique shops and garden scenes with all the accessories to bring them to life.



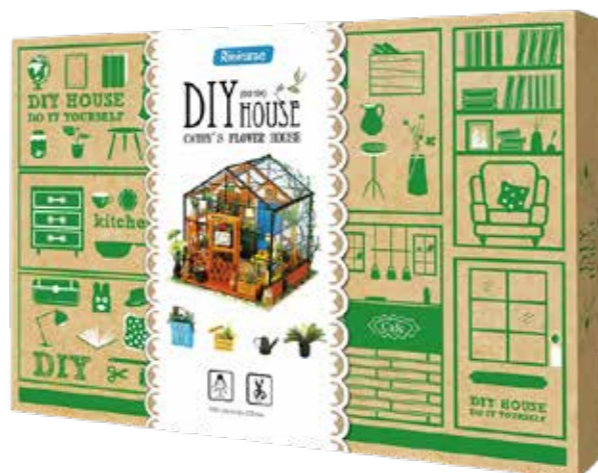
Designed for teenage and adult model makers

Design themes that with patience and dexterity inspire creative teenagers and adults to become DIY lovers!



Sustainability

All products are made from forest-friendly building timbers, natural soy inks and recyclable packaging making every effort to be environmentally friendly.



Display Case

Treat finished design scenes as proud exhibits in our distinctive cube displays.



ROBOTIME
DISPLAYS THAT MEAN BUSINESS
 Include...
 Cathy's Flower House p.6,
 Merry-go-round p.14, Ferris Wheel p.14,
 Airplane p.15, Eiffel tower p.16,
 Locomotive p.22,
 & Marble Parkour p.23
ASK FOR DETAILS



Cathy's Flower House

ILLUSTRATION OF DISPLAY CASE IS AN ARTIST IMPRESSION ONLY



Cathy's Flower House is included in the

ROBOTIME
DISPLAYS THAT MEAN BUSINESS

Ask for details

171 wooden pieces



H: 26 x W: 23 x D: 15cm

DG104-2-16.66



Display Case available for item DG104
H: 22.5 x W: 26 x D: 21.5cm



Cathy's Flower House

A miniature transparent framed greenhouse full of DIY wooden accessories.

Sam's Study

A miniature illuminated library with crowded bookshelves, framed pictures, furniture, fixtures and accessories.



221 wooden pieces



H: 19 x W: 22.5 x D: 18.5cm

DG102-2-16.66



Display Case available for item DG102
H: 22.5 x W: 26 x D: 21.5cm



Dora's Loft

A duplex apartment to inspire creativity and develop interior design for living skills.



171 wooden pieces



H: 26 x W: 23 x D: 16cm

DG12-2-20.83



H: 18.5 x W: 19 x D: 16.5cm

DG105-2-16.66



Display Case available for item DG105
H: 22.5 x W: 26 x D: 21.5cm

Jason's Kitchen

Design and build a kitchen with fixtures, fittings, decorative accessories, pots, food and bread



188 wooden pieces



Simon's Coffee Shop

A unique opportunity to design, build and furnish your own miniature coffee shop



203 wooden pieces



H: 19 x W: 22.5 x D: 19.5cm
DG109-2-16.66



Display Case available for item DG109
H: 22.5 x W: 26 x D: 21.5cm

Carl's Fruit Shop

A miniature scale model of the corner 'fruit and veg' shop with realistic produce to look like the real thing!



206 wooden pieces

H: 24 x W: 23 x D: 19.5cm
DG142-2-16.66



Ice Cream Station

Everything you need to build the illuminated Ice Cream and Desert Shop including yummy cakes and snacks!



99 wooden pieces



H: 15 x W: 21 x D: 13.5cm
DGM06-3-10.41



H: 19.5 x W: 20 x D: 18.5cm
DG143-2-16.66



Nancy's Bake Shop

A comprehensive scale model illuminated Bake Shop with all the little details to build the real thing!



172 wooden pieces



Soho Time

Inspired by a studio apartment in New York's most creative region. A great model to develop artistic and design skills.



H: 19 x W: 22.5 x D: 19.5cm
DGM01-3-10.41



Display Case available for item DGM01
H: 31.5 x W: 26 x D: 30.5cm

LED
78 wooden pieces



Miller's Flower House

Millers miniature Garden is full of plants and flowers. The perfect place to relax on a white bench with realistic windows, fences, flower beds and pots all around!



H: 21 x W: 19.5 x D: 18cm
DG108-2-16.66



LED
210 wooden pieces



Emily's Flower Shop

An inspired interpretation of a beautiful flower shop with all the copious details and the opportunity to add that special personal touch!



258 wooden pieces



H: 24 x W: 23 x D: 19.5cm
DG145-2-16.66



Display Case available for item DG145
H: 25 x W: 31 x D: 23cm

Happy Camper

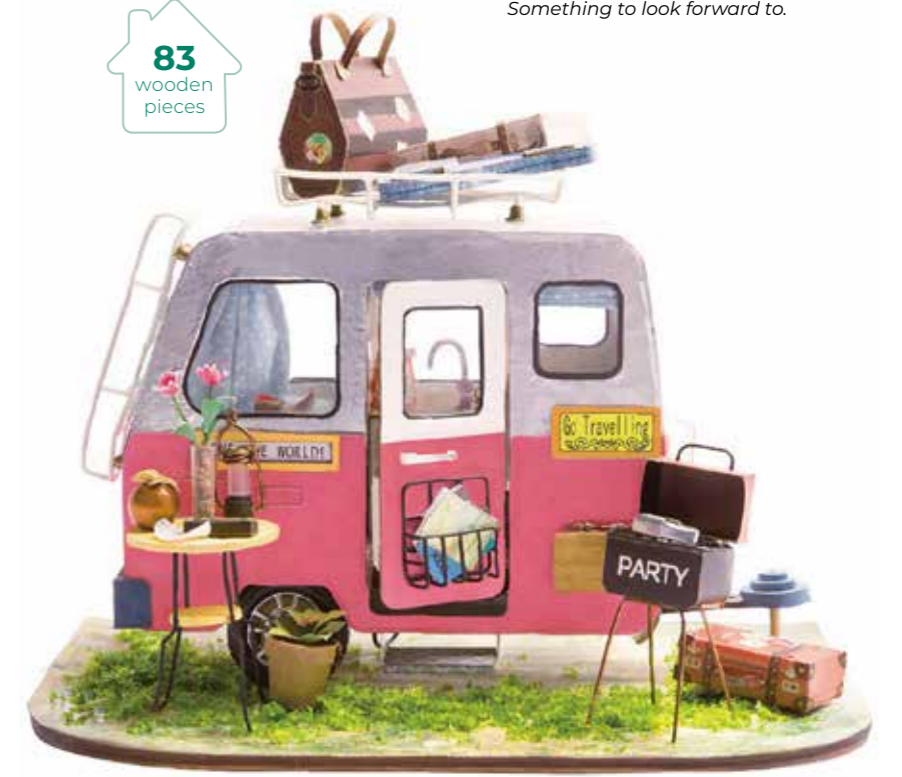
The Happy Camper is the perfect model to get you into the holiday mood. Something to look forward to.



H: 15 x W: 20 x D: 13.5cm
DGM04-3-10.41



83 wooden pieces





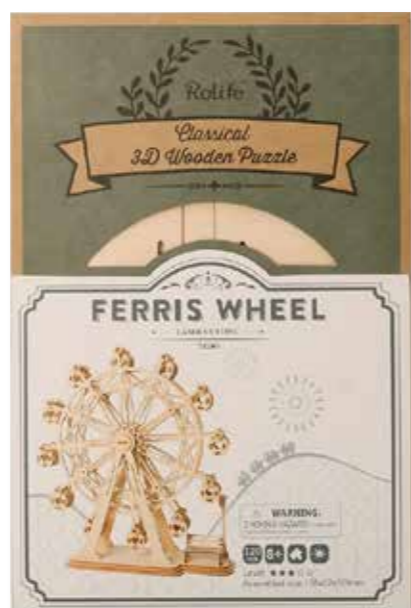
CLASSIC

Classic 3-D model kits that appeal to serious model makers regardless of age. Subjects include the iconic Eiffel Tower, historic airplanes and joyful Merry-Go-Rounds and Ferris Wheels. Models that make memories!



Designed for children and adult model makers

Design themes that with patience and dexterity inspire creative children and adults to develop their skills and become DIY lovers!



Sustainability

All products are made from forest-friendly building timbers, natural soy inks and recyclable packaging making every effort to be environmentally friendly



Display Case

Treat finished Classic Models as proud exhibits in our distinctive cube displays

ROBOTIME DISPLAYS THAT MEAN BUSINESS

Include...

Merry-go-round p.14, Ferris Wheel p.14, Airplane p.15, Eiffel tower p.16, Cathy's Flower House p.6, Locomotive p.22, & Marble Parkour p.23

ASK FOR DETAILS



Merry-go-round,
Ferris Wheel,
Airplane & Eiffel Tower
are included in the

ROBOTIME

**DISPLAYS THAT MEAN
BUSINESS**

Ask for details

178
wooden
pieces



Merry-Go-Round

The Merry-Go-Round that conjures up images of 'all the fun of the fair'. A roundabout ride that gracefully rotates. Fun to remember and even more fun to make!

H: 15 x W: 15 x D: 12cm

TG404-6-4.16



6 946785 163650

120
wooden
pieces



Ferris Wheel

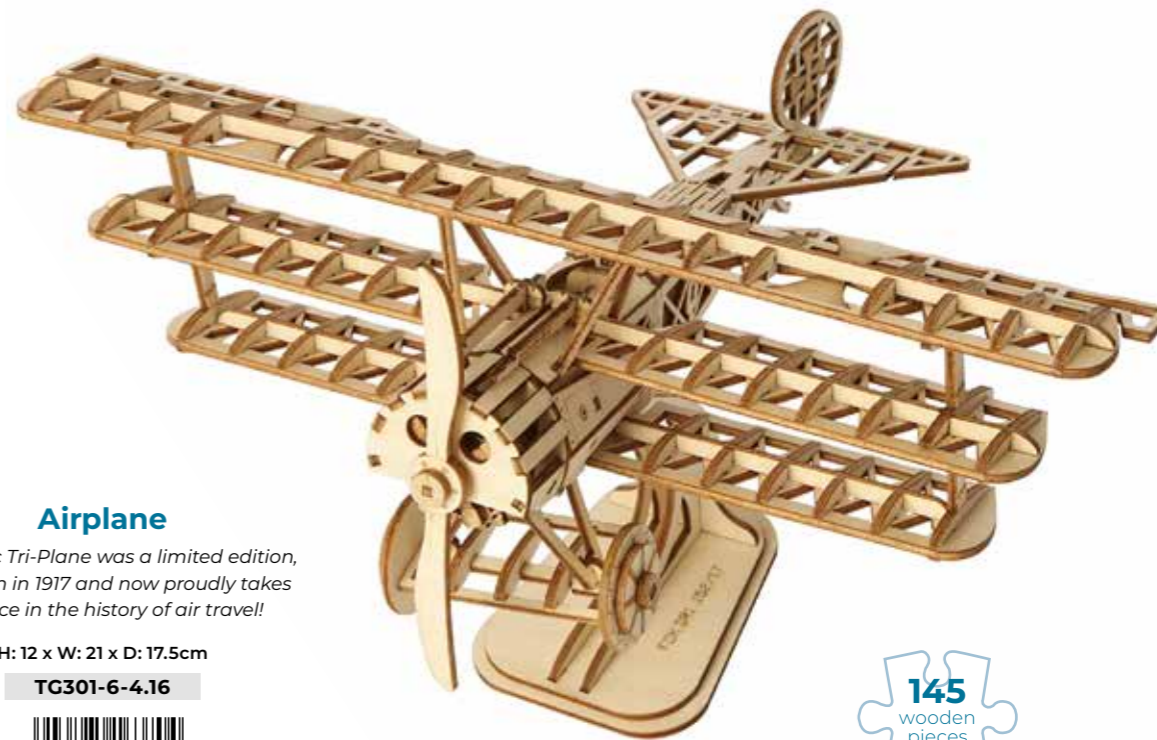
Originally made for the World's Fair in Chicago in 1893, the Ferris Wheel comes in many sizes with the largest in Las Vegas!

H: 16 x W: 15.5 x D: 5cm

TG401-6-4.16



6 946785 163025



Airplane

The iconic Tri-Plane was a limited edition, first flown in 1917 and now proudly takes its place in the history of air travel!

H: 12 x W: 21 x D: 17.5cm

TG301-6-4.16



6 946785 163704

145
wooden
pieces



Display Case available
for items
TG404, TG301
& TG401
H: 34 x W: 31 x D: 34cm

Merry-go-round, Ferris Wheel, Airplane & Eiffel Tower are included in the **ROBOTIME** DISPLAYS THAT MEAN BUSINESS. Ask for details



122 wooden pieces



Display Case available for item TG501
H: 43 x W: 21 x D: 21cm

Eiffel Tower

The Eiffel Tower in Paris is 324 metres tall, built for the Paris World's Fair in 1889 from 18,038 parts and 25m rivets. The model is made from 122 pieces but looks just like the real thing!

H: 36.5 x W: 16.5 x D: 16cm
TG501-6-6.25



182 wooden pieces

Pumpkin Cart

The Pumpkin Carriage is a romantic and beautiful interpretation of magical folklore stories. The detailed intelligent 3-D model is destined to become a treasured item of home décor!

H: 11.5 x W: 15.5 x D: 7cm
TG302-6-4.16



ILLUSTRATION OF STAND IS AN ARTIST IMPRESSION ONLY

This new Robotime counter display presents a visually arresting assortment of 6 pieces each of the 6 best selling CLASSIC models for a total of 36 pieces.

ROBOTIME CDU available
H: 60 x W: 32 x D: 38cm





118
wooden
pieces

Grand Piano

The Grand Piano is an elegant replica of the world's most iconic musical instrument. The original made for music and our scale model made for fun.

H: 13 x W: 12.5 x D: 11cm

TG402-6-4.16

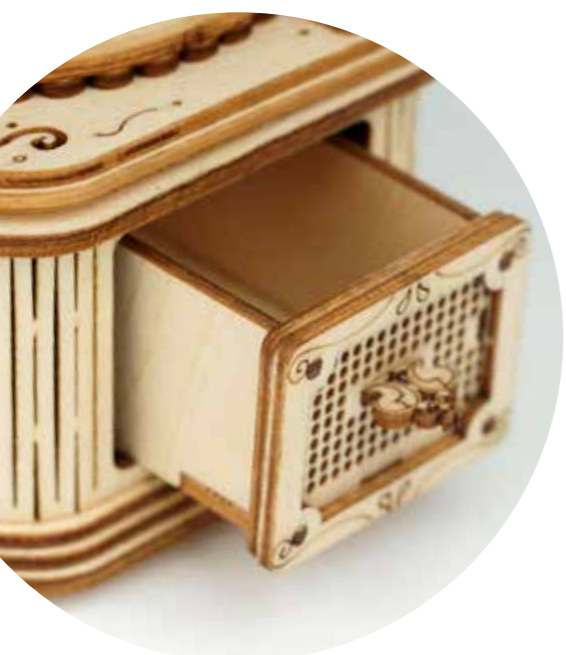


Gramophone

This Gramophone is a splendid replica of classical vintage phonographs. A delicate and detailed model to celebrate the development of iconic music players!

H: 18.5 x W: 11 x D: 10cm

TG408-6-4.16



122
wooden
pieces



145
wooden
pieces

Cruise Ship

The Cruise Ship is a detailed replica of a historic British four-funnel passenger liner, proudly flying the Union Jack Flag. A model inspired by the history of luxurious ocean travel!

H: 11 x W: 19 x D: 5cm

TG306-6-4.16



118
wooden
pieces

Sailing Ship

The Sailing Ship is a vintage 3-Masted model inspired by the adventures of sail in days of yore.

H: 12 x W: 20 x D: 4.5cm

TG305-6-4.16





MECHANICAL

A fascinating collection of mechanical scale models representing the historic development of steam trains, motor vehicles, clocks, calendars and interesting mechanical devices with even a walking T-rex!



Designed for teenage and adult model makers

Mechanical models that demonstrate the historic development of transportation and technology. The ideal challenge for model makers who enjoy the added dimension of movement to their skill, patience and dexterity!



Sustainability

All products are made from forest-friendly building timbers, natural soy inks and recyclable packaging making every effort to be environmentally friendly.



Display Case

Treat finished Mechanical models as proud exhibits in our distinctive displays.



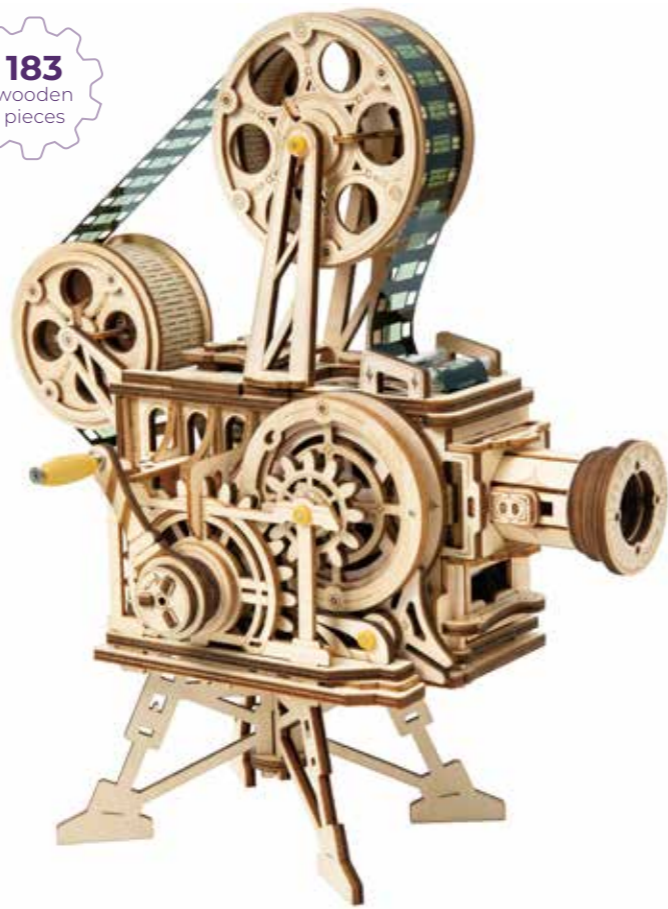
ROBOTIME
DISPLAYS THAT MEAN BUSINESS
 Include...
 Locomotive p.22, Marble Parkour p.23,
 Cathy's Flower House p.6,
 Merry-go-round p.14,
 Ferris Wheel p.14, Airplane p.15
 & Eiffel tower p.16
ASK FOR DETAILS





Locomotive & Marble Parkour are included in the **ROBOTIME** DISPLAYS THAT MEAN BUSINESS. Ask for details

183 wooden pieces



Vitascope

The Vitascope was the first device to use electric light to cast images on a screen. A model to make movies!

H: 25.5 x W: 22 x D: 13cm

LK601-2-20.83



Display Case available for item LK601
H: 29 x W: 36 x D: 23cm

Locomotive

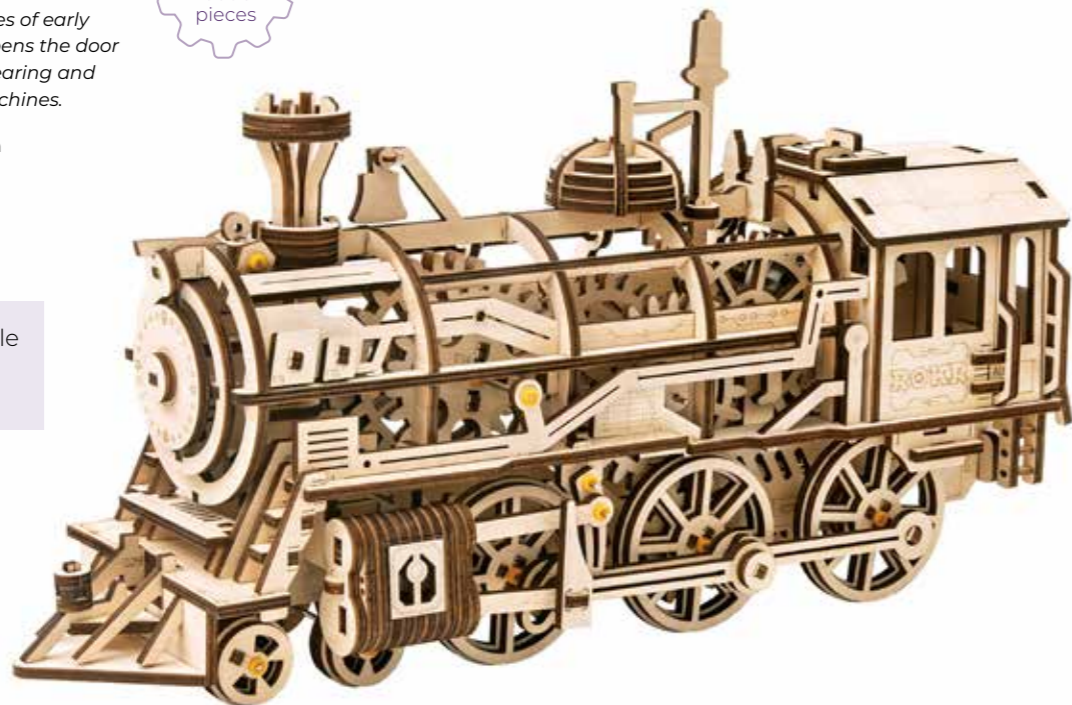
The Locomotive evokes memories of early steam locomotion. A model that opens the door to understanding mechanical gearing and a passion for these iconic machines.

H: 18.5 x W: 37 x D: 12cm

LK701-2-25.00



Display Case available for item LK701
H: 27 x W: 33 x D: 20cm



350 wooden pieces

Marble Parkour

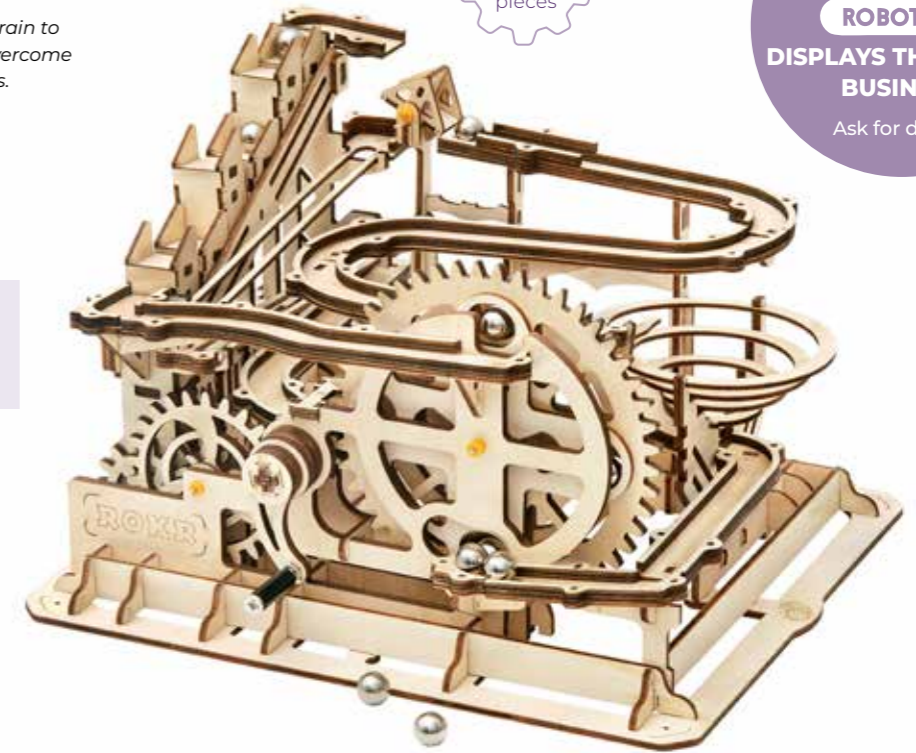
The Marble Parkour enables the brain to run free discovering new ways to overcome obstacles and solve problems.

H: 25.5 x W: 23.5 x D: 18.5cm

LG501-2-16.66



Display Case available for item LG501
H: 25 x W: 29 x D: 27cm



254 wooden pieces

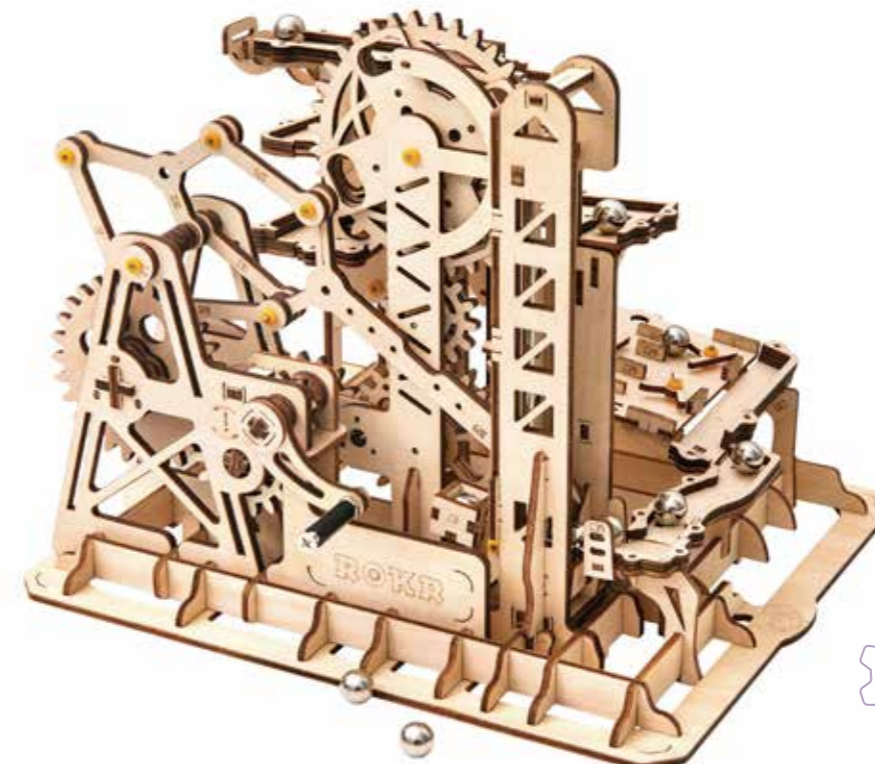
Locomotive & Marble Parkour are included in the **ROBOTIME** DISPLAYS THAT MEAN BUSINESS. Ask for details

Marble Climber

The Marble Climber integrates the beauty of science and technology with mechanical gear drives. A great learning experience!

H: 25.5 x W: 23 x D: 20.5cm

LG504-2-16.66



233 wooden pieces





161 wooden pieces



Owl Clock

The Owl Clock, inspired by folklore becomes an artistic timepiece with pendulum, bell timer and accurate battery powered quartz movement

H: 26.5 x W: 20.5 x D: 13cm

LK503-2-25.00



Display Case available for item LK503
H: 30 x W: 28 x D: 18cm

Globe

The Globe is a huge rotating globe on a pedestal with classical panel designs and a secret drawer. A big challenge to make but a most rewarding result!

H: 52 x W: 32.5 x D: 29cm

ST002-1-41.66



567 wooden pieces

Age 8-12+

85 wooden pieces

Walking T-Rex

The Tyrannosaurus-Rex roamed the earth 66 million years ago. This walking model has acoustic technology to walk, bite and roar!

H: 22.5 x W: 31.5 x D: 12cm

D210-3-10.41



Display Case available for item D210
H: 34 x W: 36 x D: 29cm



52 wooden pieces

Perpetual Calendar

The perpetual calendar is a geared model of manual dexterity designed to record day, month and date automatically!

H: 17.5 x W: 17 x D: 9cm

LK201-4-8.33





369
wooden
pieces



Army Field Car

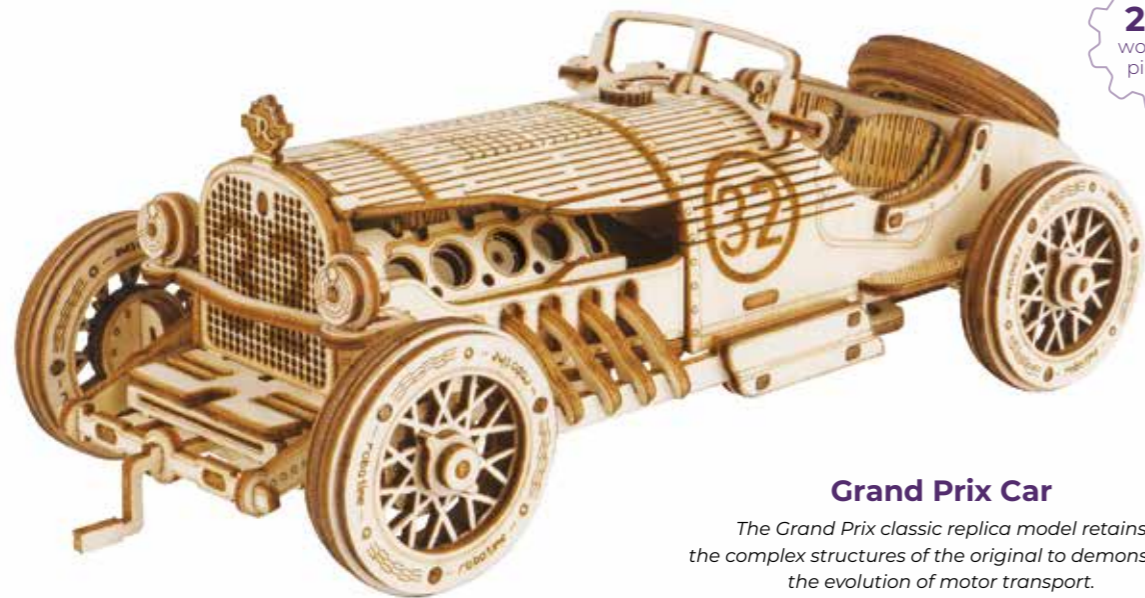
The Army Field Car is one of the most iconic vehicles of the 1940's, known as the 'go anywhere...do anything' vehicle!

H: 9 x W: 10 x D: 19cm

MC701-4-10.41



6 946785 110616



220
wooden
pieces

Grand Prix Car

The Grand Prix classic replica model retains the complex structures of the original to demonstrate the evolution of motor transport.

H: 6 x W: 19 x D: 8cm

MC401-4-10.41



6 946785 110593



308
wooden
pieces

Prime Steam Express

The Prime Steam Express is an iconic scale model of American steam trains in the 1860's with copious attention to detail including a steam whistle, shaft wheels and a removable tender.

H: 8.5 x W: 31 x D: 8cm

MC501-4-10.41



6 946785 110586



286
wooden
pieces

Heavy Truck

The Heavy Truck is a classic example of robust and sturdy road transport. The undisputed 'King of the road'!

H: 10 x W: 22.5 x D: 7cm

MC502-4-10.41



6 946785 110609





PRIMARY

The first step to inspire and satisfy enquiring young minds to gain knowledge and information from models that are quite easy to follow and make. A veritable zoo of iconic wild animals, prehistoric dinosaurs, cars, trains, boats, planes, butterflies and more!



Designed for very young model makers

Model Kits of about 30 pieces on average with easy-to-follow instructions and everything needed to make the model in the box. The ideal first step for young people to care about the environment, learn about animals and vehicles and improve manual dexterity.



Sustainability

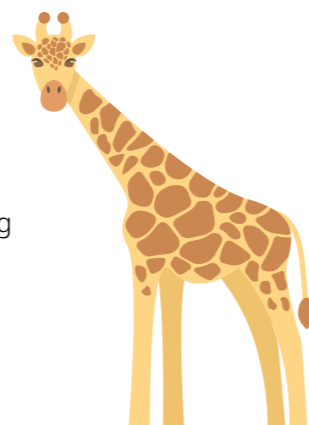
All products are made from forest-friendly building timbers, natural soy inks and recyclable packaging making every effort to be environmentally friendly.

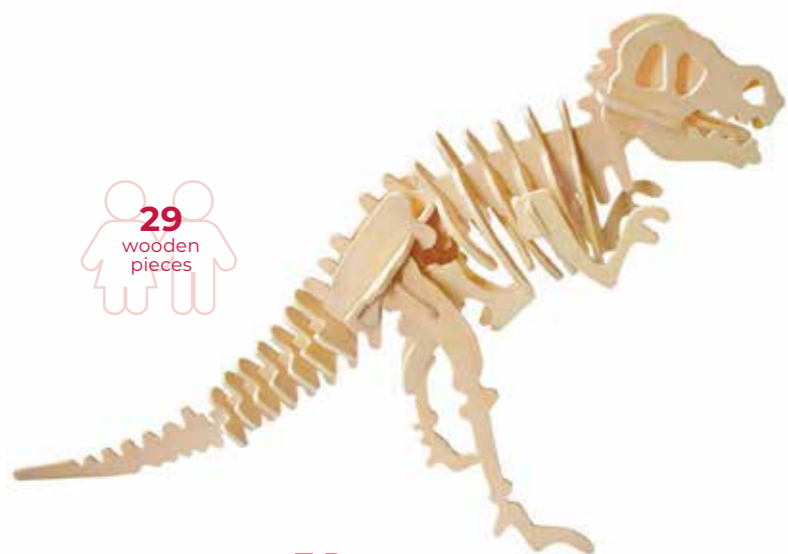


FSDU

This new Robotime Floor Display Unit is a proven business builder presenting 24 pieces of any 10 selected Primary models for a total of 240 pieces.

ROBOTIME FSDU
H: 150 x W: 50 x D: 40cm





29 wooden pieces

T-Rex

The T-rex is the largest and most powerful, meat eating, dinosaur that roamed the earth 68 million years ago.

H: 33 x W: 23 x D: 18cm

JP203-12-1.25



43 wooden pieces

Stegosaurus

The Stegosaurus was a very large herbivore dinosaur, about 18 feet long and 10 feet tall, that lived on earth about 155 million years ago.

H: 15 x W: 27 x D: 7.5cm

JP221-12-1.25



16 wooden pieces

Butterfly

The Butterfly is nature's miracle of metamorphosis!

H: 19 x W: 22.5 x D: 24.5cm

JP204-12-1.25



30 wooden pieces

Bee

The Bee is nature's hero, working tirelessly to pollinate trees and flowers as well as providing delicious honey!

H: 9 x W: 18.5 x D: 19.5cm

JP206-12-1.25



39 wooden pieces

Spinosaurus

The Spinosaurus is a very large historic, fish eating, dinosaur growing to about 36 feet long and weighing more than 7 tons!

H: 25 x W: 21.5 x D: 8cm

JP220-12-1.25



19 wooden pieces

Dragonfly

The Dragonfly, in nature, is much admired for its spectacular colours and agile flight.

H: 7 x W: 20 x D: 16cm

JP144-12-1.25



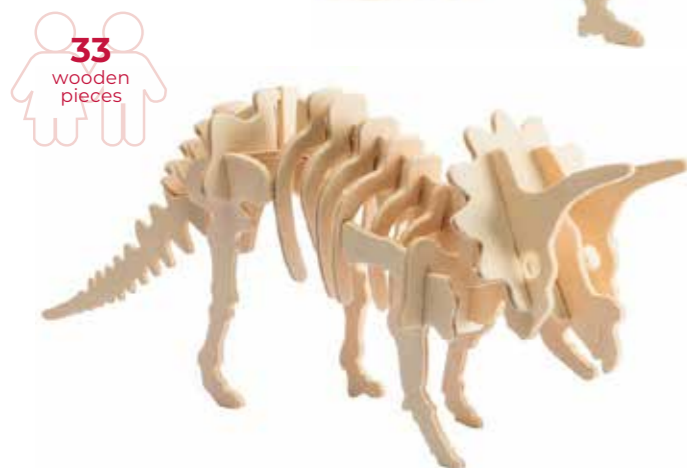
25 wooden pieces

Mantis

The Mantis has a distinctive, triangular head, which can be rapidly rotated when hunting for prey.

H: 20 x W: 25 x D: 18cm

JP202-12-1.25



33 wooden pieces

Triceratops

The Triceratops is one of the last known herbivore, non-avian dinosaurs, which became extinct 66 million years ago.

H: 11.5 x W: 31 x D: 7.5cm

JP230-12-1.25



35 wooden pieces

Owl

Owls are famous for their broad head and wide eyed binocular vision to see their prey from a great distance. They hunt silently at night and their distinctive 'Hooooo' call can be heard for miles.

H: 23 x W: 13 x D: 9.5cm

JP273-12-1.25



22 wooden pieces

Parrot

Parrots are the most intelligent of birds. There are many varieties, from plain grey or green to brightly coloured. They are social and clever at mimicking sounds, some even learn how to talk!

H: 23 x W: 9 x D: 7cm

JP262-12-1.25



22 wooden pieces

Flamingo

The Flamingo is named from the Portuguese word meaning 'flame coloured'. They are a wading bird, noted for their bright pink colour and, famously, for usually standing on one leg!

H: 21.5 x W: 12.5 x D: 4.5cm

JP269-12-1.25





33
wooden
pieces

Ferrari

The Ferrari, developed by former racing driver, Enzo Ferrari, dates back to 1947 and has become the most iconic supercar in the world.

H: 6 x W: 13 x D: 9cm

JP235-12-1.25



39
wooden
pieces

Locomotive

The Robotime Locomotive is inspired by the early days of steam trains.

H: 10 x W: 22 x D: 9 cm

DZ08-12-1.25



21
wooden
pieces

Tiger

The Robotime Tiger is a 3-D model of the largest living member of the cat family, found mainly in India.

H: 11 x W: 13.5 x D: 3.5cm

JP254-12-1.25



34
wooden
pieces

Lion

The Robotime Lion is the 3-D male model of the 'King of the Beasts' with its distinctive prominent mane and a tuft at the end of its tail.

H: 13 x W: 18.5 x D: 7cm

JP225-12-1.25



25
wooden
pieces

Bi-Plane

The Robotime Bi-Plane, with its two wings, was adapted from successful glider designs in the early 1900's.

H: 9.5 x W: 21.5 x D: 18.5cm

JP208-12-1.25



34
wooden
pieces

Life Boat

The Life Boat is a symbol of courage and rescue at sea.

H: 12 x W: 21 x D: 7 cm

JP294-12-1.25



27
wooden
pieces

Elephant

The Robotime African Elephant is a 3-D model of the largest land animal on earth.

H: 13 x W: 17 x D: 6cm

JP215-12-1.25



19
wooden
pieces

Giraffe

The Robotime Giraffe is a 3-D model of the largest living terrestrial animal that can grow to a height of 6 metres.

H: 25 x W: 20 x D: 4 cm

JP243-12-1.25



21
wooden
pieces

Hippo

The Robotime Hippo (Hippopotamus) is a 3-D model of the third largest land mammal in the world, after the Elephant and Rhino.

H: 10.5 x W: 12.5 x D: 4cm

JP267-12-1.25



18
wooden
pieces

Shark

Modern Sharks dates back 100 million years. Today, the best known sharks are the Tiger Shark, Great White, Blue and Hammerhead.

H: 15.5 x W: 22.5 x D: 11cm

JP229-12-1.25



58
wooden
pieces

Crocodile

The Robotime Crocodile is a 3-D model of the semi-aquatic reptile found in Africa, America, Asia and Australia.

H: 10 x W: 33 x D: 10cm

JP227-12-1.25



30
wooden
pieces

Horse

The Horse was first domesticated about 4,000 years ago to pull vehicles and over time for riding, hunting and racing.

H: 16 x W: 18 x D: 4.5cm

JP207-12-1.25



30
wooden
pieces

Unicorn

The Unicorn is a legendary creature often resembling a white horse with a spiral horn projecting from its forehead.

H: 17 x W: 20 x D: 5cm

JP257-12-1.25





INSPIRATIONAL

Model kits to inspire and encourage creativity appealing to both model makers and music aficionados. All the fun of the fair with carousels and ferris wheels. Memories of ice cream vans on seaside holidays and fairy stories of pumpkin coaches and dancing ballerinas!



MUSIC BOXES



Designed for creative model makers, young and old!

A great opportunity for young people and adults to find inspiration from both music and model making!



All products are made from forest-friendly building timbers, natural soy inks and recyclable packaging making every effort to be environmentally friendly.



Treat finished Inspirational Models as proud exhibits in our distinctive cube displays



Moving Flavour Ice Cream Van Music Box

If ice cream and music are two of your favourite things, this model kit could be the most exciting project. A model that makes music to it's own tune 'Moving Flavour', what fun!

H: 16 x W: 14 x D: 9cm

AMD61-3-12.50



Display Case available for items AMD61 & AM402
H: 26 x W: 37 x D: 19cm



Ferris Wheel Music Box

All the fun of the fair comes to life with this pretty rotating music box in such trendy colours. A DIY model to build with loving care and listen to the music of 'Castles in the Air' as the wheel goes round.

H: 17 x W: 10 x D: 7.5cm

AM402-3-12.50



Dancing Ballerina Music Box

'Everything is beautiful at the ballet' and this dream can come true by making a really pretty music box model with a mechanism that allows the ballerina to dance to the tune of Greensleeves for you!

H: 8.5 x W: 11 x D: 9cm

AMD52-3-12.50





165
wooden
pieces

Pumpkin Carriage Music Box

Romance and folklore come to the fore in this exotically beautiful Pumpkin Carriage that makes music to the tune of 'Born Free' as well!

H: 10 x W: 16 x D: 16cm

AM41-3-12.50



174
wooden
pieces

Starry Night Music Box

Inspired by the magical music of 'It's a small world' and memories of colourful carousel rides at the fair as day turns to dusk'

H: 19 x W: 11.5 x D: 11.5cm

AM44-3-12.50



Display Case
available for items
AM44 & AM41
H: 26 x W: 37 x D: 19cm

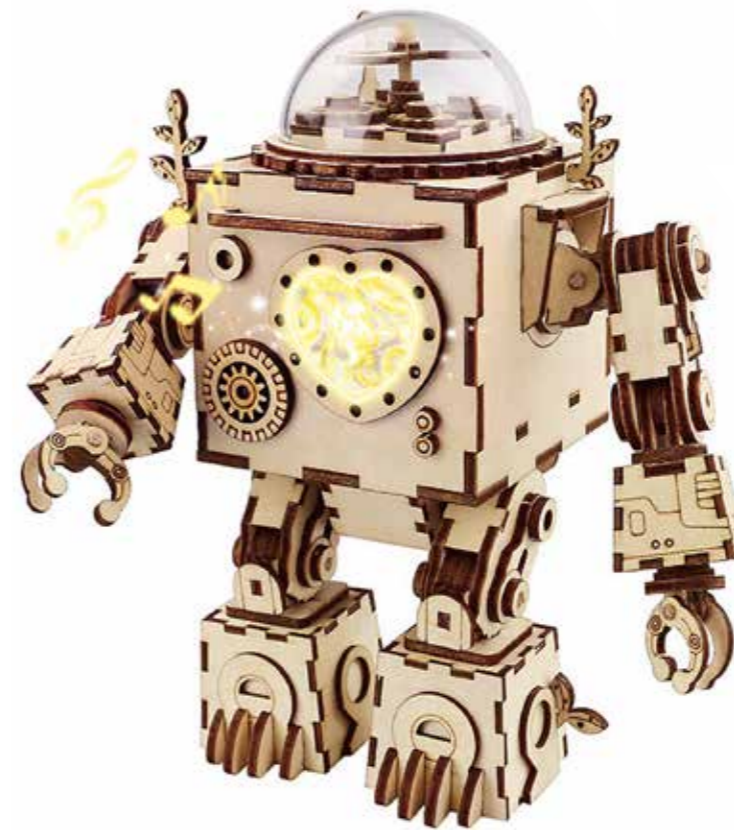
232
wooden
pieces

Ferris Wheel Music Box

The giant 34cm tall Ferris Wheel turns to the gentle musical accompaniment of 'Around the world in 80 days'. An impressive model to make and proudly display.

H: 34 x W: 28 x D: 10cm

TGN01-3-12.50



221
wooden
pieces

Orpheus Music Box

The music 'Can't take my eyes off you' tells the story of this rare and unusual 'Steampunk' musical box! Educational, amusing and fun to make.

H: 18.5 x W: 15 x D: 9cm

AM601-3-14.58



Display Case
available for
item AM601

H: 22 x W: 23 x D: 23cm



FSDU & CDU



Custom made displays mean business.
The ideal way to present best selling assortments of Robotime models.

399600
 ROBOTIME FSDU
 H: 150 x W: 50
 x D: 40cm



399601
 ROBOTIME CDU
 H: 60 x W:32
 x D: 38cm

This new Robotime Floor Display Unit is a proven business builder presenting 24 pieces of any 10 selected PRIMARY models for a total of 240 pieces.

This new Robotime counter display presents a visually arresting assortment of 6 pieces each of the 6 best selling CLASSIC models for a total of 36 pieces.

ILLUSTRATIONS OF STANDS ARE AN ARTIST IMPRESSION ONLY

DISPLAY TABLES



399602
 Rectangle Display Table
 H: 100 x W:120 x D: 80cm



399603
 Square Display Table
 H: 100 x W:100 x D: 100cm

Custom made Display Tables for Robotime are a real business builder, presenting up to 6 Display Cubes on the top with a great range of supporting packaged stock on the shelves below. The ideal VIP entry into the model business.

Fountasia Limited

Unit 1, Orchard Business Park, Badsell Road, Five Oak Green, Kent TN12 6QU England

T: +44(0)1892 838888 E: info@fountasia-wholesale.com

www.fountasia-wholesale.com

Fountasia™ is a trade mark of Fountasia Limited and the designs featured within these products are protected by Registered Design Right and/or Copyright.
Fountasia IP cannot be used without permission and we reserve the right to take action against any unauthorised use.