



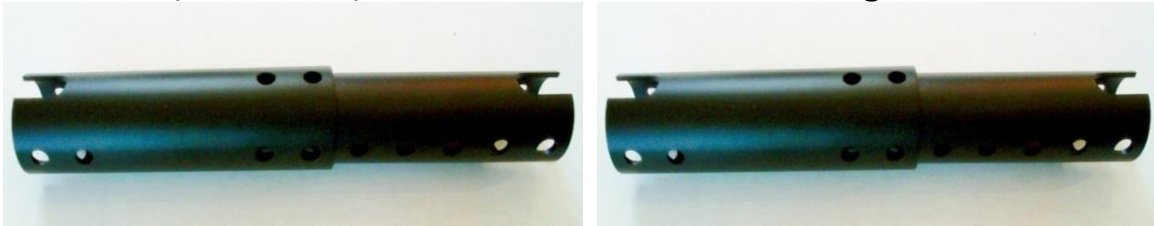
Thunder Mounts Garage Door Track Mounting Instructions.

Tools/Items Needed:

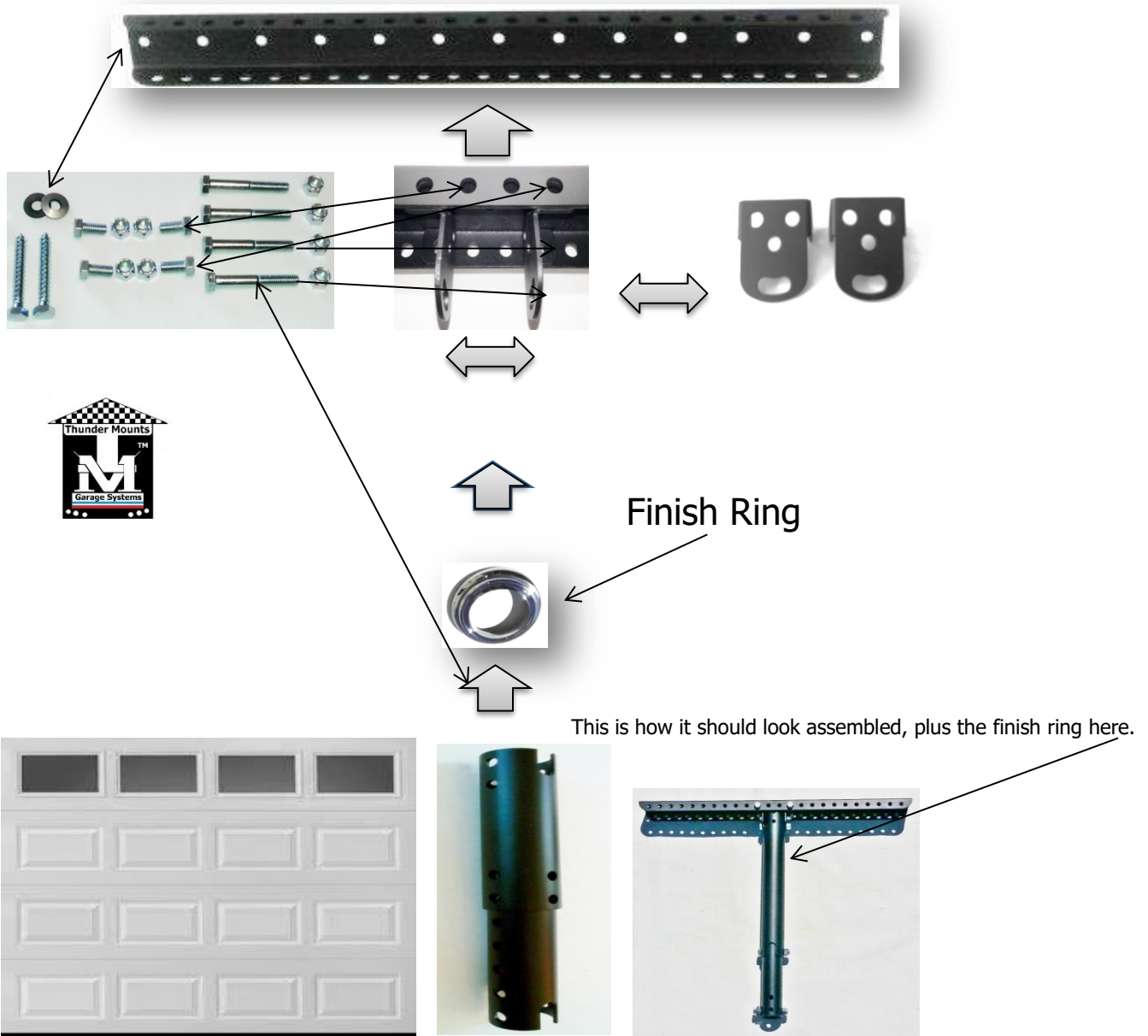
- $\frac{9}{16}$ " socket and wrench, $\frac{1}{2}$ " socket and wrench and a ratchet wrench
- Power drill, socket driver 1/8 inch drill bit, six foot ladder, contact cement
- Measuring tape and something to hold the garage track in place.

In the box:

Two channels, four happy face cradles, four tubes pieces, Isolator washers, hardware, instructions and two finish rings.



**You might notice the bolt holes on the tubes are designed to Accept the bolts tighter in one direction than the other.*



Mounting above the ceiling:

1. Start with the door closed to locate the solid / wood / supports above door tracks from where to safely and securely attach/mount the Thunder Mount Channels. **(It's mandatory to mount channels horizontal with the door)**. Cradles attach in the channel facing each other and adjust in one inch increments left or right.

2. Directly below where the Channels have been placed but to the outside of the Tracks, Mark ceiling and cut a 2.5 inch hole at the exact location for the tubes to go through the ceiling / drywall. " L square or a flash light strait up works well".

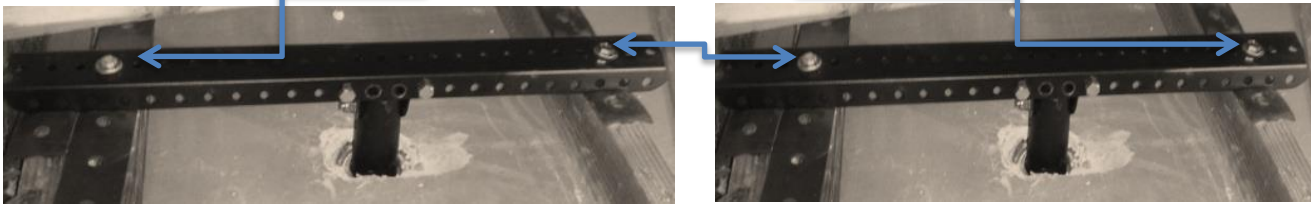
Mark and Cut Open a 2.5/8 Hole in Ceiling,



This is the Right Way! Do this.

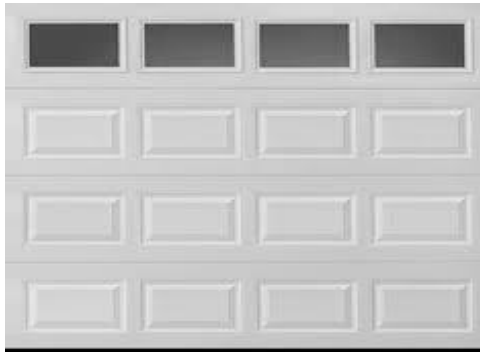
One Mount to Each Track.

Remember the Isolator washers!!



Thunder's Track Cradle attached to Channel and under Channel bolted to the Supports and bolted to Tube.

Image #1
"Horizontal to Door"



Cut holes in the ceiling beside the tracks where the tubes will protrude. Use the chrome rings included as your guide.

Thunder Mounts Hardware.

#1

#2

#3

#4

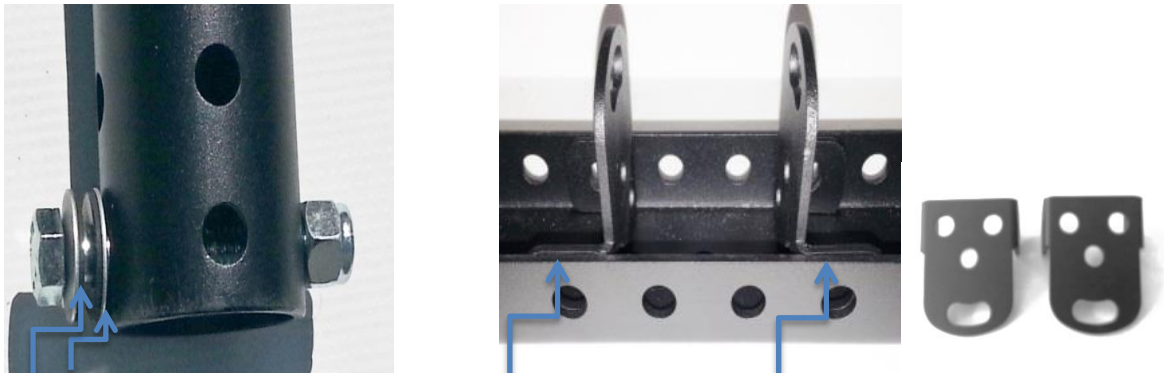


#1 Lags and iso washers For Channels

#2, 9/16 x 3/4 inch Cradles For Cradles

#3, 9/16 x 2.5" tubes For Tubes

#4, 9/16 x 3/4 cradles 9/16 x 3" for tubes For Cradles and 2" tubes



Track Isolator washers,

Cradles bolt facing towards each other.

Cradles Face

3. Drill 1/8 x 1 inch deep holes in the structure to attach the Channels.

4. Place the cradle's where you need them to be then bolt them in place at this time snug but not tight. Then attach "Wider Tube" to the Cradles in the second set of holes of the tube "And Tighten Them Up First".

*** Then tighten the cradles in place as needed on the channel then tighten them. Retighten everything good and tight. ***

(Note)*Secure the nuts and bolts good and

Tight into the second set of holes of the wider tube with less holes.

5. * Glue the Finish Ring to the ceiling now before you add the adjustable tube.*. Glue not included at this time. Silicone Caulk works well.

6. Now slide in the adjustable tubes bolt together and secure together the adjustable tubes onto the tracks.

Recheck all the nuts and bolts and Re-tighten them securely.

Mounting Thunder Tracks below the ceiling:

1. Locate the solid wood supports above the tracks from where to attach Thunder Mounts Channels to support the Door Tracks.
2. Attach the cradle's to the channels directly above with the tubes attached to connect to the outside of the door tracks.
The tubes must be attached on the outside of the door tracks.
Take your time to be sure with everything together where it will all land.
3. Attach with the #2, 9/16 x 3/4 inch hardware included in the kit.
Mark that location and pre-drill the holes with a 1/8 inch drill Bit and drill 2" deep.

5. First **loosely** bolt the Cradles on the Channel where needed.
6. **Then** bolt on the **Wider Tube** into the **second set of holes**
And tighten them up.
7. **Then tighten up the cradles good and tight.**
This makes sure the cradles are tight against the tubes.
**Note the bolt holes on the tubes are made to accept the bolt tighter in one direction than the other.*
8. Bolt the Adjustable Tubes together to Door Tracks. Gen 3 hardware are 9/16 x 3" bolts for the thick 12 ga. Gen 3 Tubes.
Adjust the Height. Recheck all the nuts and bolts and secure them well!

**Mounting Thunder Mount Garage Tracks:
This is the Wrong Way to Mount the Channels.**

Look at this!!

This is the **wrong** way !!
Unstable Mounted this way.



Not Recommended at all !!!

(Seen here is TMGTC) Image #2.

We Recommended Only Mounting Channels Parallel with the Door! Image #1. Page 3
Be sure that it's secure and tight and assembled like Image #1 and Page 3.
(Remember that the door and track spacing should be one inch or less).



Thunder Mounts Garage Systems LLC.
The Overhead Garage Mount Solution Made In America.
Give us a call if you have any questions. 805-338-6680

Hours: M-F 9-5, 10-2 Sat. Closed Sunday 805-262-2895 PST. info@thundermountgarage.com

Injury and or property damage can occur if installation instructions are not followed properly and voids any manufactures warranty.

Copyright © 2010-2018.THUNDER MOUNTS TM All rights reserved.