

Recent Trends in Child Support Enforcement

ROBERT DOAR, MORGRIDGE FELLOW IN POVERTY STUDIES,
AMERICAN ENTERPRISE INSTITUTE

DECEMBER 5, 2017



Child support enforcement: cost effective, reduces child poverty, and promotes personal responsibility

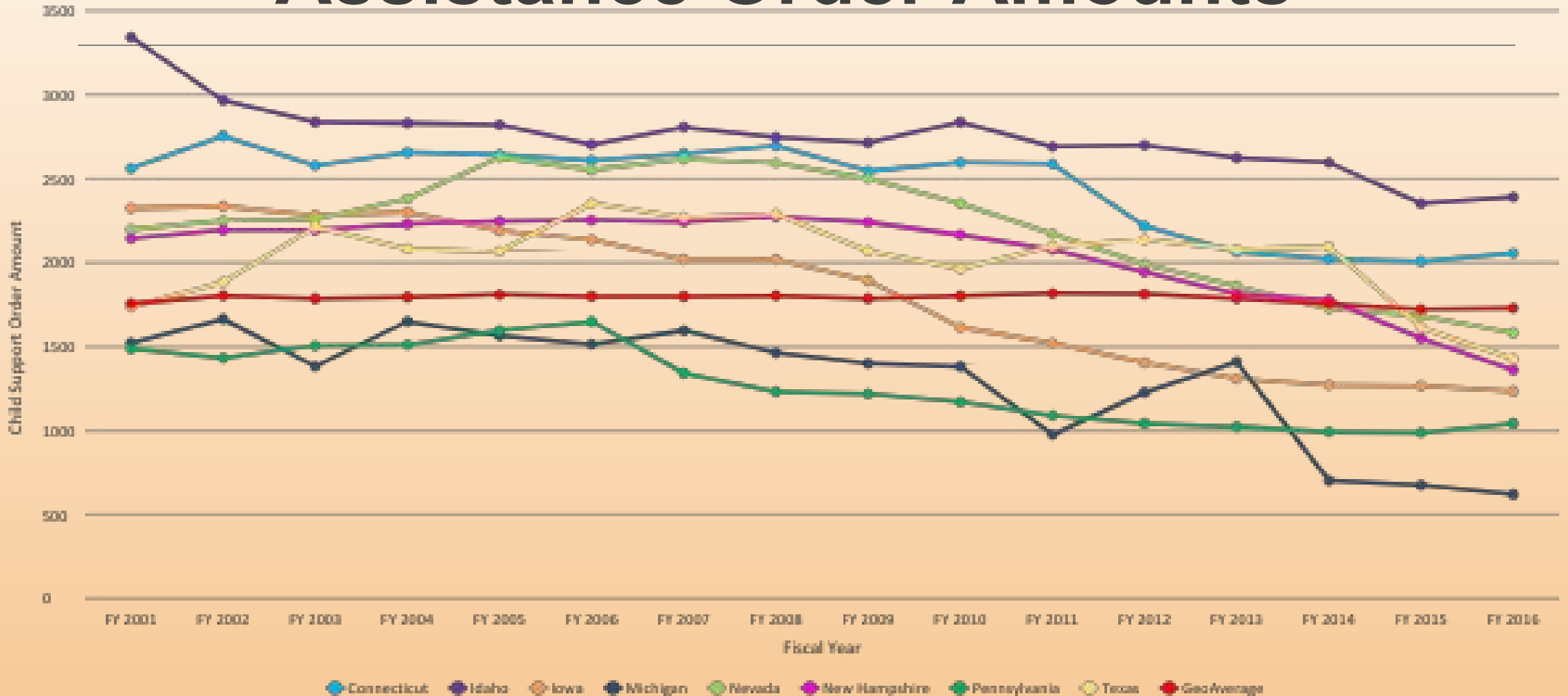
- In 2016, 426,000 children were lifted out of poverty thanks to child support collections
- 95% of collections go to families
- But its reach – the number and percentage of poor, single-parent families it is helping – and its effectiveness have diminished over the past ten years

Current Assistance Order Amounts

With percent change since 2001

State	AL	AK	AZ	AR	CA	CO	CT	DE	FL	GA	HI	ID	IL	IN	IA	KS
FY 2016	\$2,422.82	\$2,331.94	\$1,824.65	\$2,457.46	\$1,693.51	\$2,446.37	\$2,055.89	\$1,301.45	\$3,160.25	\$2,422.45	\$1,349.91	\$2,390.73	\$1,363.97	\$1,710.33	\$1,234.62	\$1,486.83
Percent Change	32.0%	13.8%	2.6%	36.4%	-18.3%	-6.0%	-19.7%	-7.0%	43.7%	93.8%	7.3%	-28.5%	-19.7%	-10.9%	-46.9%	-5.6%
State	LA	ME	MD	MA	MI	MN	MS	MO	MT	NE	NV	NH	NJ	MN	NY	NC
FY 2016	\$1,134.10	\$2,327.31	\$1,991.60	\$2,383.96	\$ 619.90	\$1,409.82	\$2,388.21	\$1,574.13	\$1,445.58	\$1,515.88	\$1,582.31	\$1,361.46	\$3,209.61	\$2,381.47	\$1,824.35	\$1,272.19
Percent Change	-8.1%	12.6%	16.9%	42.7%	-59.3%	-15.4%	9.9%	14.7%	-4.9%	-9.1%	-28.0%	-36.5%	28.4%	28.4%	35.3%	-7.5%
State	OH	OK	OR	PA	RI	SC	SD	TN	TX	UT	VT	VA	WA	WV	WI	WY
FY 2016	\$1,516.54	\$1,942.26	\$2,204.08	\$1,042.21	\$2,437.73	\$2,151.01	\$1,769.60	\$1,778.26	\$1,427.19	\$1,721.76	\$1,388.70	\$1,340.15	\$2,197.82	\$1,069.63	\$1,503.86	\$1,253.70
Percent Change	-3.0%	15.8%	30.9%	-29.9%	3.3%	3.9%	12.6%	-4.9%	-17.8%	-4.0%	25.6%	15.0%	-13.6%	-24.0%	8.6%	-5.7%

States with Decreases in Current Assistance Order Amounts

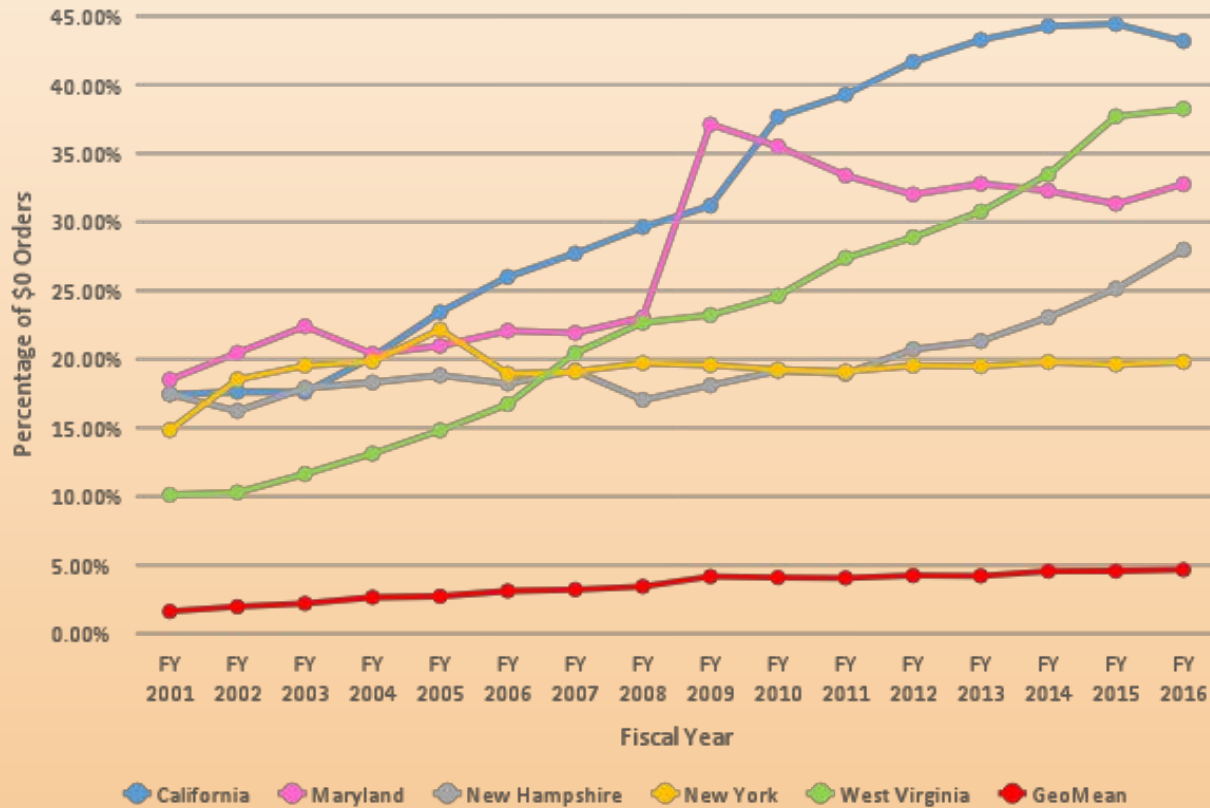


Percent of \$0 Orders For Current Assistance Cases

State	AL	AK	AZ	AR	CA	CO	CT	DE	FL	GA	HI	ID	IL	IN	IA	KS	KY
FY 2016	0.08%	0.01%	13.86%	1.34%	43.17%	3.22%	17.81%	4.53%	0.67%	3.45%	5.96%	4.82%	11.61%	17.17%	4.05%	7.22%	4.19%
State	LA	ME	MD	MA	MI	MN	MS	MO	MT	NE	NV	NH	NJ	NM	NY	NC	ND
FY 2016	2.20%	5.26%	32.75%	7.58%	8.18%	14.25%	5.20%	4.99%	5.33%	12.01%	8.41%	27.98%	1.86%	2.94%	19.81%	2.34%	1.15%
State	OH	OK	OR	PA	RI	SC	SD	TN	TX	UT	VT	VA	WA	WV	WI	WY	GeoMean
FY 2016	1.15%	5.10%	6.13%	41.01%	13.52%	10.09%	1.15%	16.83%	1.43%	0.12%	12.23%	1.71%	3.24%	38.24%	19.94%	4.73%	4.66%

States with Large Increases or Historically High in \$0 Orders

States with Percentages of \$0 Orders Historically Higher than 10% for Current Assistance



Percent of Current Assistance Cases with \$0 Orders					
	FY 2001	FY 2006	FY 2011	FY 2016	Percent Change
Indiana	0.01%	1.07%	10.52%	17.17%	171630.77%
Massachusetts	0.01%	6.19%	6.92%	7.58%	65059.35%
New Mexico	0.01%	0.01%	2.16%	2.94%	29345.73%
Michigan	0.06%	2.91%	6.14%	8.18%	12660.37%
Nebraska	0.29%	6.94%	9.71%	12.01%	4050.52%
Illinois	1.07%	19.12%	6.32%	11.61%	981.32%
New Jersey	0.17%	0.58%	0.85%	1.86%	966.95%
Mississippi	0.58%	0.61%	0.61%	5.20%	794.81%
Montana	0.84%	2.36%	4.05%	5.33%	531.30%
South Carolina	1.91%	0.57%	10.00%	10.09%	427.80%
Hawaii	1.18%	1.98%	5.84%	5.96%	405.42%
Texas	0.30%	0.82%	1.14%	1.43%	377.64%
Connecticut	4.10%	7.15%	13.45%	17.81%	334.57%
Pennsylvania	10.44%	7.31%	36.78%	41.01%	292.68%
Tennessee	4.42%	11.73%	15.04%	16.83%	280.88%
West Virginia	10.12%	16.73%	27.39%	38.24%	278.00%
Wisconsin	6.75%	16.49%	14.42%	19.94%	195.48%
GeoMean	1.62%	3.11%	4.06%	4.66%	187.82%
California	17.46%	26.00%	39.29%	43.17%	147.29%
Oklahoma	2.12%	2.49%	3.38%	5.10%	140.91%
Washington	1.38%	2.73%	3.10%	3.24%	134.39%
Minnesota	6.29%	15.34%	14.82%	14.25%	126.66%
Iowa	1.86%	3.34%	4.26%	4.05%	118.10%
Delaware	2.22%	5.65%	9.48%	4.53%	103.88%

What should state commissioners do?

- Review order amounts and zero-dollar orders
- Mandate cooperation requirement for SNAP applicants
- Consider employment programs for non-custodial parents