

CREI

TRUMPET I

- ARRANGELO: MICHAEL SITAL/MARIO FERRER/MARCOS GARCIA -

WWW.MARIACHIGURU.COM



12



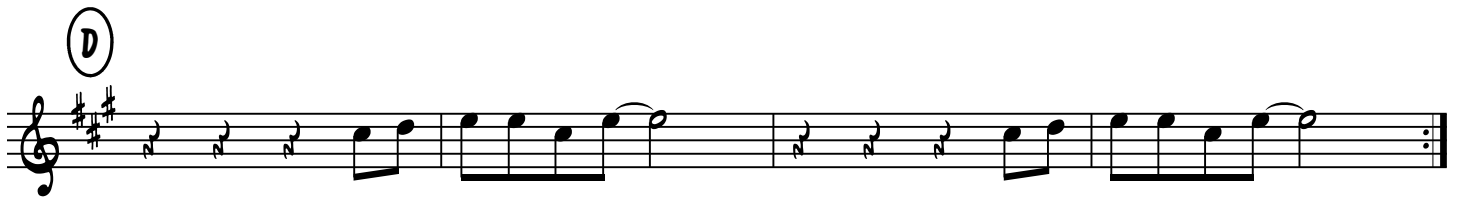
18



25



32



42

CREI

TRUMPET II

- ARRANGELO: MICHAEL SITAL/MARIO FERRER/MARCOS GARCIA -

WWW.MARIACHIGURU.COM



Musical score for Trumpet II, CREI. The score is written in treble clef with a key signature of three sharps (F#, C#, G#) and a 4/4 time signature. It consists of seven staves of music. The first staff starts with a whole rest. The second staff is marked with a circled 'A'. The third staff starts at measure 12. The fourth staff starts at measure 18 and includes a circled 'B' and a '2' indicating a second ending. The fifth staff starts at measure 24 and includes another '2'. The sixth staff is marked with a circled 'C' and ends with '2X TO CODA'. The seventh staff starts at measure 36 and is marked with a circled 'D'. The final staff starts at measure 42 and ends with a double bar line and repeat dots.

CREI

- ARRANGELO: MICHAEL SITAL/MARIO FERRER/MARCOS GARCIA -

WWW.MARIACHIGURU.COM



VIOLINS

Musical score for Violins, featuring measures 7 through 39. The score is written in treble clef with a key signature of one sharp (F#) and a 4/4 time signature. It includes various musical notations such as rests, eighth notes, quarter notes, and sixteenth notes. Performance instructions include **Pizz.** (Pizzicato), **ARCO** (Arco), and **2X TO CODA**. Section markers **A**, **B**, **C**, and **D** are circled. A Coda symbol is present at the end of the piece.

