

whole steps and the keyboard: quiz and answer sheet

QUIZ: Fill in the blanks and check your answers to the worksheet.

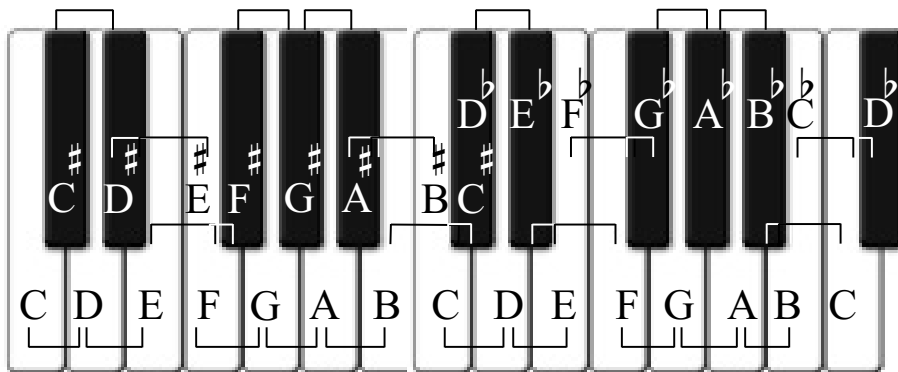
A whole step is _____ half steps together. A whole step consists of 2 _____ letter names. Look at the keyboard below. C# to ____ is a whole step apart. The interval name for a whole step is called a _____. The same keys apart are C# and E \flat however, C to E are _____ letter names apart and considered a _____ and therefore not a whole step. As well, D \flat to D# are also the same distance apart but since the notes share the same letter name, it is called a _____.

ANSWER SHEET

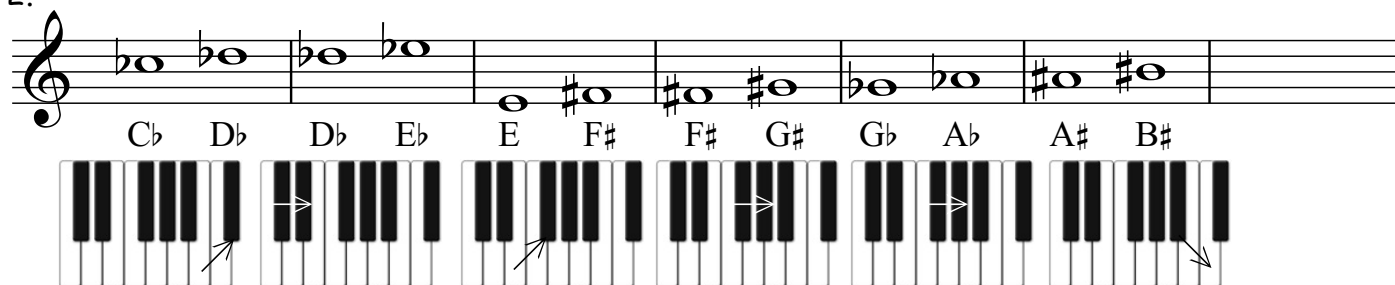
1.

C to D
D to E
E to F#
F to G
G to A
A to B
B to C#

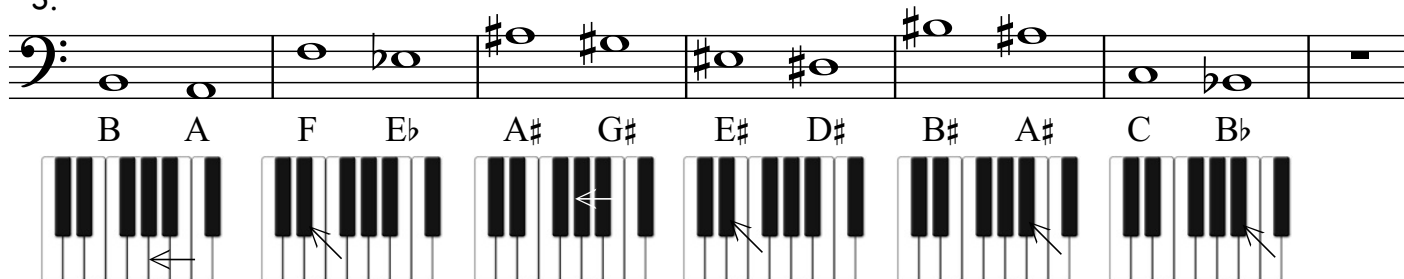
C# to D#
D# to E#
F# to G#
G# to A#
A# to B#
D \flat to E \flat
E \flat to F
F \flat to G \flat
G \flat to A \flat
A \flat to B \flat
B \flat to C
C \flat to D \flat



2.



3.



4.

