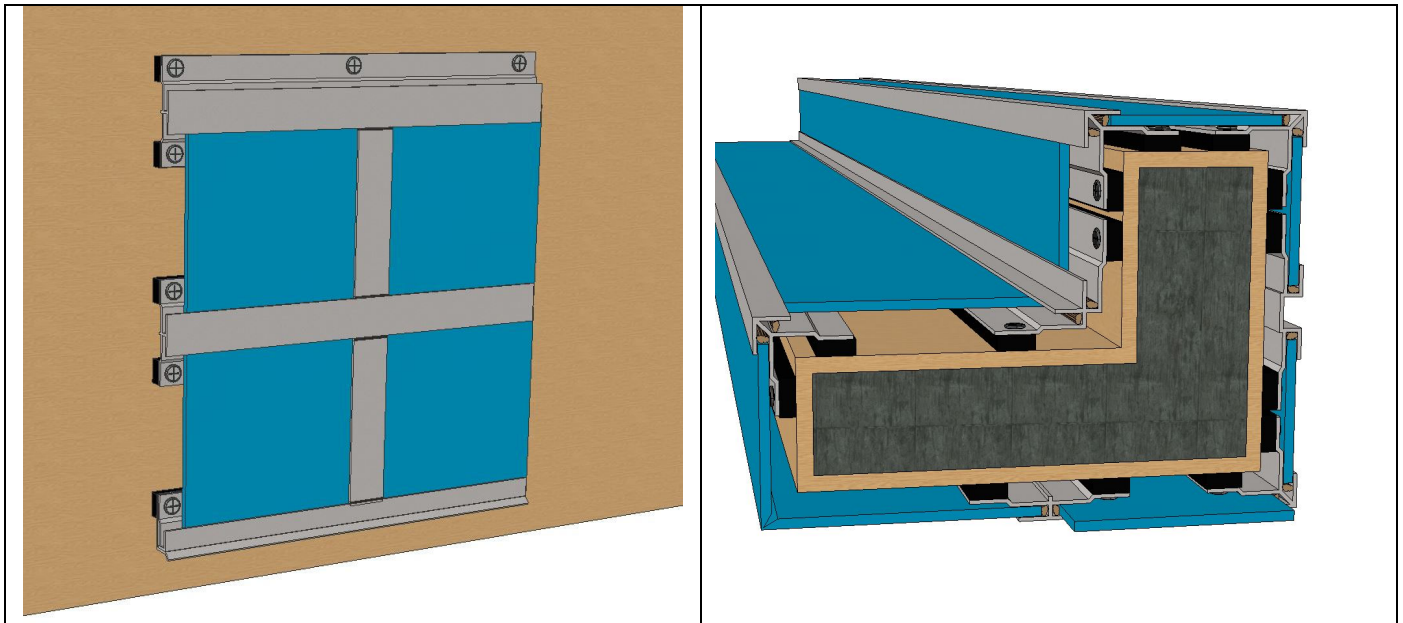


PRODUCT DATA SHEET

The D7-1 FPS is an exposed extrusion wall cladding system that is simple to install and easily field modified to adapt to substrate conditions. The system is offered in reveal and non-reveal type extrusions to give your building the look you require. Extrusions are finished to either match the color of the ACM panels or can be any color combination you may desire. This design allows us to provide a simple, packaged system, adaptable on the job site for fast installation.

D7-1 FPS Features and Information:

System:	Progressive Installation
Reveal Type	Exposed Extrusion Based – Reveal or Non-Reveal
Underlayment	Waterproofing Weather Barrier Required
Required Substrate	Minimum of 5/8" Plywood prior to installation
Radius Surfaces	YES – Segmented, certain designs will require radius flashings
System Depth	3/8" Minimum – 5/8" Design
Required Maintenance	Minimal : Clean with low pressure water and mild detergents
Thermal Expansion	YES
Price	LOW
Weather Sealed	YES
Installation Rating	Easy – Field Adaptable



<p>Material Manufacturers:</p> <p>Alpolic (Mitsubishi Plastics) Alucobond (3A Composites) Larson (Alucoil) Reynobond (Alcoa) See Manufacturer for product technical specifications, finish and color options available.</p>	<p>Base Material Sizing:</p> <p>50" x 196" 62" x 196" Standard Custom Sizes also available PE Core = Polyethylene FR Core = Fire Rated (Mineral)</p>
<p>Material Thickness:</p> <p>4mm (.157") Standard 1/8" Aluminum Plate (For Custom Color Design Requirements)</p>	<p>Panel Extrusions and Mounting Clips:</p> <p>Aluminum Alloy: 6063-T6 Finish</p>
<p>System Depth:</p> <p>3/8" Minimum - Design 5/8"</p>	<p>Fabrication Tolerances:</p> <p>Width: 0.04" nominal Length: 0.04" nominal Panel Depth: 0.040" nominal Square: 0.04" nominal</p>
<p>Reveal Width:</p> <p>1/2" on Reveal Extrusions No Reveal on Flat Extrusions</p>	