

BUCKEYE COFFEE ROASTERS

INSTRUCTIONS TO SETUP ARTISAN SOFTWARE ON YOUR COMPUTER 2018 BC ROASTERS

ARTISAN SOFTWARE WILL WORK ON A PC, MAC OR LINUX COMPUTER

1.DOWNLOAD THE LATEST ARTISAN SOFTWARE AT THESE LOCATIONS:

Artisan Latest releases:

<https://github.com/MAKOMO/artisan/releases/latest>

SIGN UP FOR FREE EMAIL SUPPORT:

<https://lists.mokelbu.de/listinfo/artisan-user>

Artisan software:

Send Artisan-User mailing list submissions to

artisan-user@lists.einfachkaffee.de

To subscribe or unsubscribe via the World Wide Web, visit

<https://lists.mokelbu.de/listinfo/artisan-user>

or, via email, send a message with subject or body 'help' to

artisan-user-request@lists.einfachkaffee.de

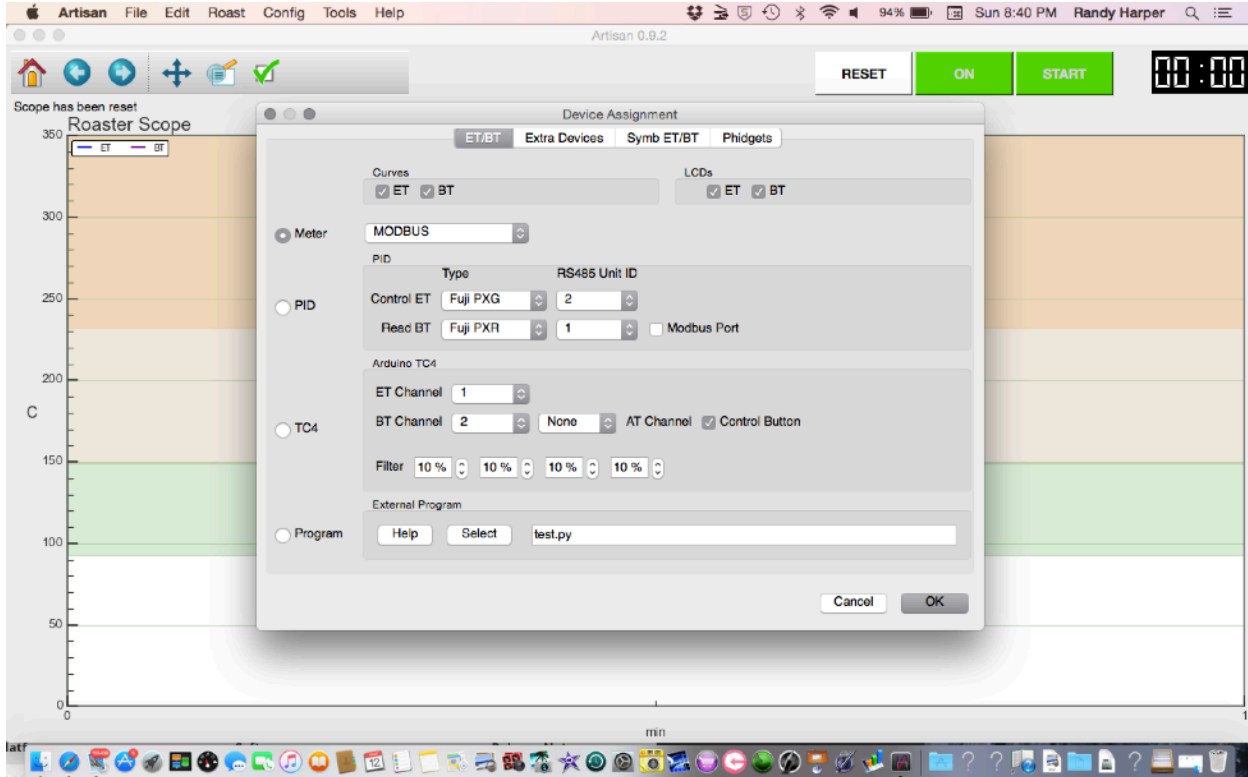
YOU WILL NEED TO INSTALL THE DRIVER LISTED BELOW IN ORDER FOR YOUR COMPUTER TO RECOGNIZE THE ROASTER:

CP210x USB to UART Bridge VCP Drivers (on some 2018 models)

[http://www.silabs.com/products/development-tools/software/usb-to-uart-bridge-vcp-
drivers](http://www.silabs.com/products/development-tools/software/usb-to-uart-bridge-vcp-drivers)

TECH@BUCKEYECOFFEE.COM

BUCKEYE COFFEE ROASTERS



2. SETTING UP THE SOFTWARE

A. AFTER INSTALLING THE CORRECT SOFTWARE FOR YOUR COMPUTER OPEN IT UP.

B. NEXT CLICK ON THE CONFIG BUTTON AT TOP OF SOFTWARE:

C. OPEN THE DEVICE WINDOW:

D. CLICK ON THE METER DIVISE SETTING AND SET TO MODBUS & MAKE SURE THE ET & BT FLOAT ARE CHECKED & THAT THE MODE FOR INPUT 1 & INPUT 2 ARE SET TO “F”. THEN CLICK OK

E. NEXT THE SERIAL PORT WINDOW SHOULD OPEN. BE VERY CAREFUL TO SET THIS UP WHILE ATTACHED TO ROASTER WITH THE USB CORD AND HAVE ROASTER ON.

BUCKEYE COFFEE ROASTERS

F. CLICK THE DROP DOWN WINDOW FOR COMM PORT AND CHOOSE THE CORRECT USB PORT ATTACHED TO YOUR ROASTER. THIS SHOULD SAY THE NAME OF DRIVER SUCH AS CP2012 OR CP2102 DRIVER:

THE SERIAL PORT SCREEN:

IMPORTANT SETTINGS ON THE SERIAL PORT SCREEN:

MAKE SURE YOU SET ALL SETTINGS EXACTLY AS SEEN IN THIS SCREEN SHOT:

9600 BAUD RATE, BYTE: 8, PARITY N, STOPBITS 1, TIMEOUT 1,

INPUT 1: SLAVE 1, REGISTER 2, FUNCTION 3 MODE C,

INPUT 2: SLAVE 1, REGISTER 0, FUNCTION 3 MODE ,THEN CLICK OK.

***NOTE:** DEPENDING ON THE DATA LOGGER INSTALLED ON YOUR MACHINE THE SERIAL PORT MAY SHOW CP2102 OR SILICON LABS CP210X OR CP2102 PORT UNDER COMM PORT

The screenshot shows the 'Serial Ports Configuration' window with the 'Modbus' tab selected. The settings are as follows:

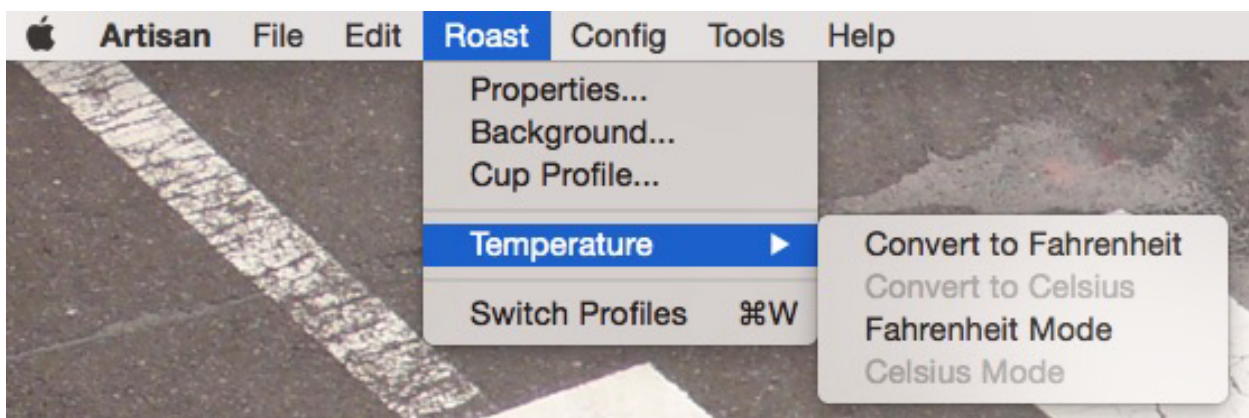
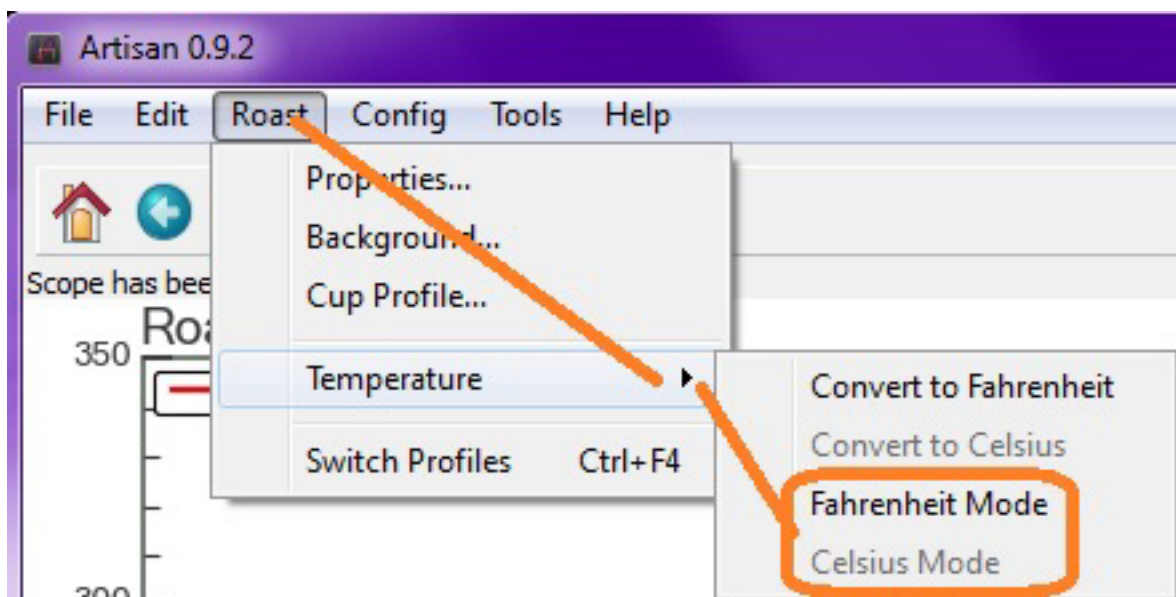
Setting	Value
Comm Port	CP2102
Baud Rate	9600
Byte Size	8
Parity	N
Stopbits	1
Timeout	1.0
PID	
Slave	0
SV	0
P	0
I	0
D	0
SV Multiplier	10
p-i-d Multiplier	
ON	
OFF	
little-endian	<input type="checkbox"/>
Type	Serial RTU
Host	127.0.0.1
Port	502

Buttons: Scan, Help, Cancel, OK

BUCKEYE COFFEE ROASTERS

YOU SHOULD NOT NEED TO CHANGE THE F OR C SETTINGS AT THIS POINT BUT IF YOU DO YOU CAN USE THE DROP DOWN MENU BELOW:

IF YOU NEED TO CHANGE THE READINGS FROM CELSIUS TO FAHRENHEIT
CLICK THE DROP DOWN MENU TITLED ROAST WHILE SOFTWARE IS NOT RUNNING:



BUCKEYE COFFEE ROASTERS

IF YOU NEED HELP:

SIGN UP FOR FREE EMAIL SUPPORT:

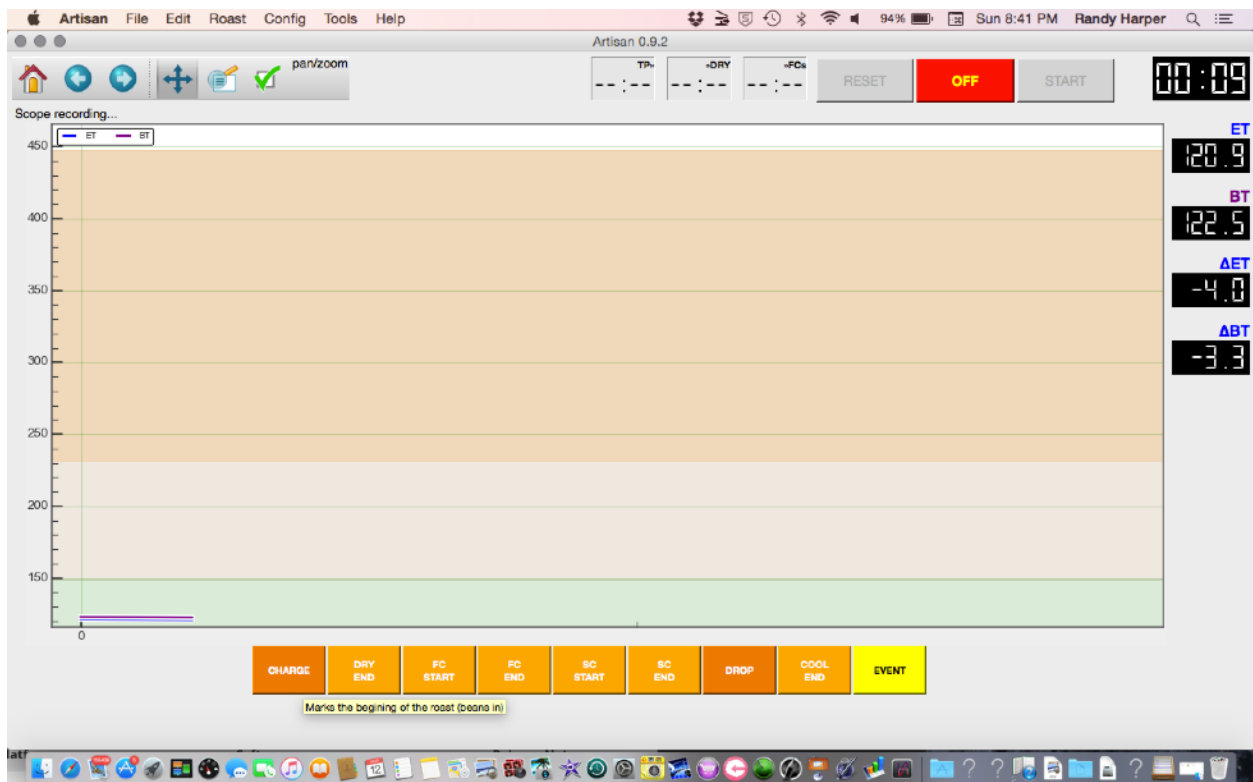
<https://lists.mokelbu.de/listinfo/artisan-user>

ONCE YOU PROPERLY SETUP ARTISAN TO SYNC WITH YOUR ROASTER YOU CAN BEGIN USING IT. ARTISAN WILL GRAFT THE TEMPERATURE CONTROLS ON BOTH ET AND BT. IF YOU ARE USING A PHIDGET INSTEAD OF THE BUILT IN COMPUTER PROFILING SYSTEM PLEASE REFER TO THE PHIDGET SETUP GUIDE.

WITH ARTISAN WHILE SOFTWARE TRACKS AND RECORDS THE TEMPERATURE CHANGES YOU MUST CLICK EACH BUTTON THAT APPLIES FOR CHANGES OCCURRING IN YOUR ROAST:

CLICK THE START BUTTON AND THIS SCREEN WILL APPEAR:

YOU WILL SEE MANY BUTTONS AT THE BOTTOM YOU CLICK TO RECORD EVENTS DURING THE ROAST:



BUCKEYE COFFEE ROASTERS

CHARGE: WHEN YOU DROP BEANS INTO DRUM AFTER PREHEAT

DRY END: WHEN ROAST COMPLETES DRYING PHASE. (THE BEANS TURN FROM GREEN TO YELLOW) THE DRYING PHASE GENERALLY ENDS AROUND 335F (168C) AND THEN THE BROWNING OR MAILLARD PHASE BEGINS

FC START: FIRST CRACK STARTS

FC ENDS: THE ENDING OF FIRST CRACK

SC STARTS: BEGINNING OF 2ND CRACK

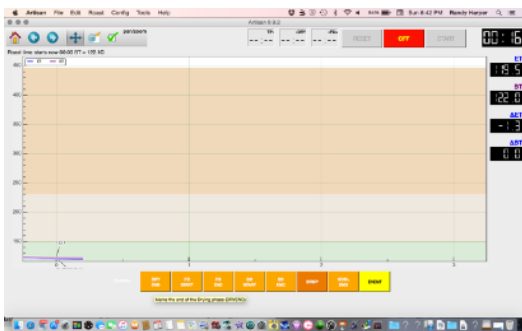
SC ENDS: IF ROASTING VERY DARK YOU MAY IN RARE CASES TAKE ROAST TO END OF 2ND CRACK

DROP: DROPPING BEANS INTO COOLING TRAY

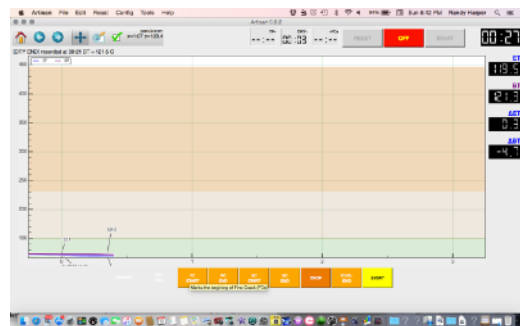
COOL END: SOME PEOPLE WANT TO RECORD EXACT TIME OF COOLING BEANS IN TRAY EVENT.

**HERE ARE THE SCREENS SHOWING THE ABOVE BUTTONS BEING PRESSED:
(NOTE: THIS WAS NOT DURING AN ACTUAL ROAST)**

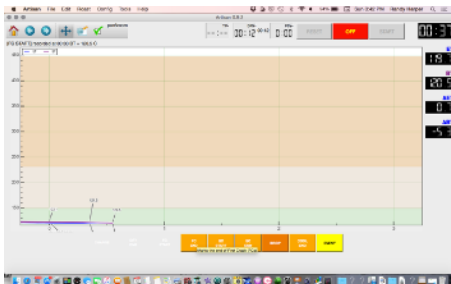
SCREEN AFTER CHARGE



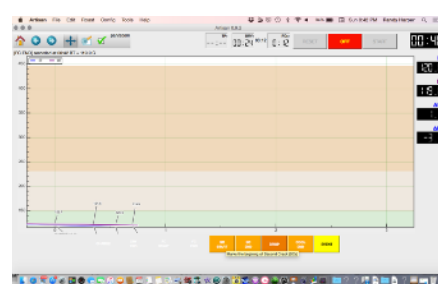
SCREEN AFTER DRY END



AFTER FIRST CRACK START



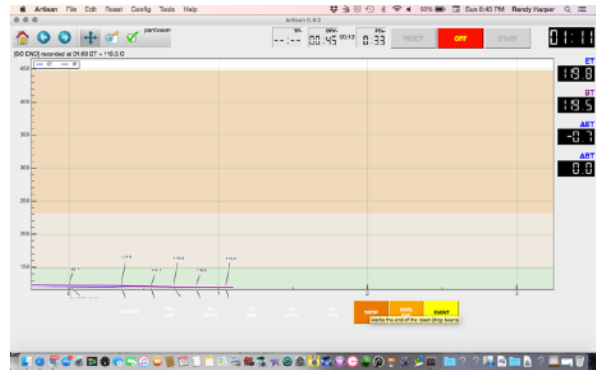
AFTER FC ENDS



AFTER 2ND CRACK STARTS

AFTER 2ND CRACK ENDS

BUCKEYE COFFEE ROASTERS



AFTER

DROP

INTO

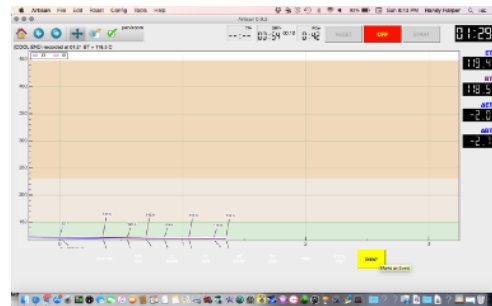
COOLING

TRAY

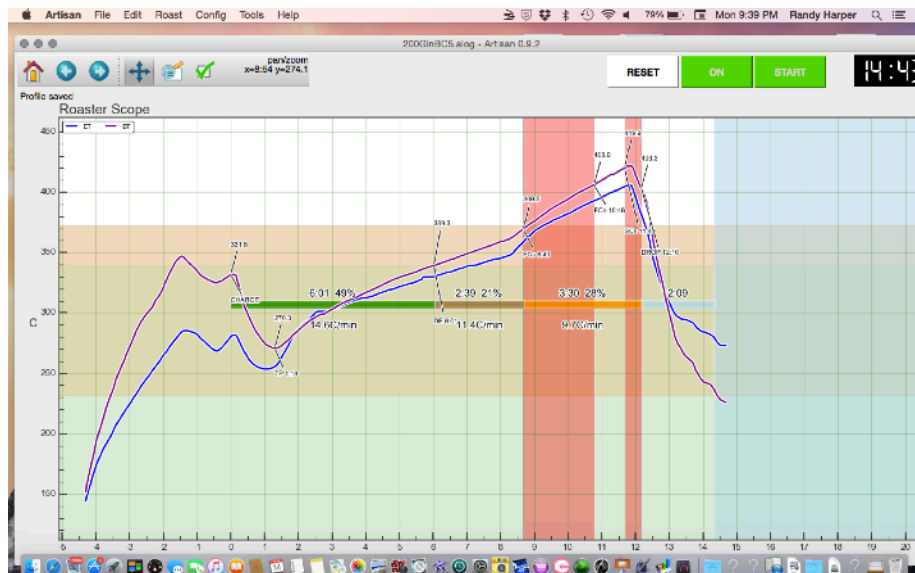
AFTER

COOLING

IS DONE



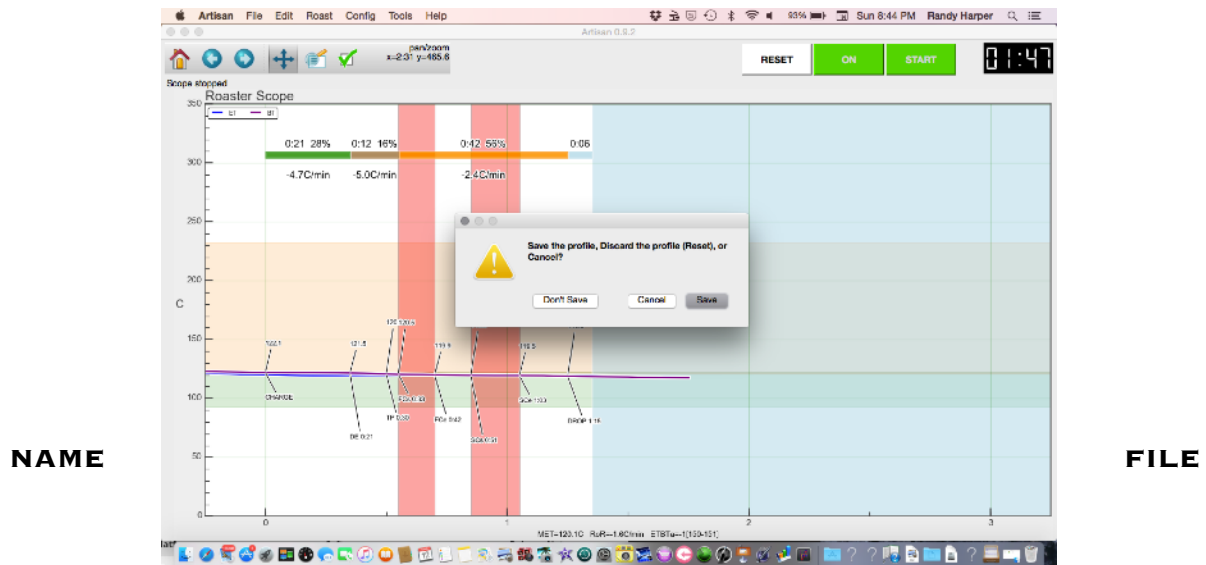
ENTIRE ROAST PROFILE (DEMO)



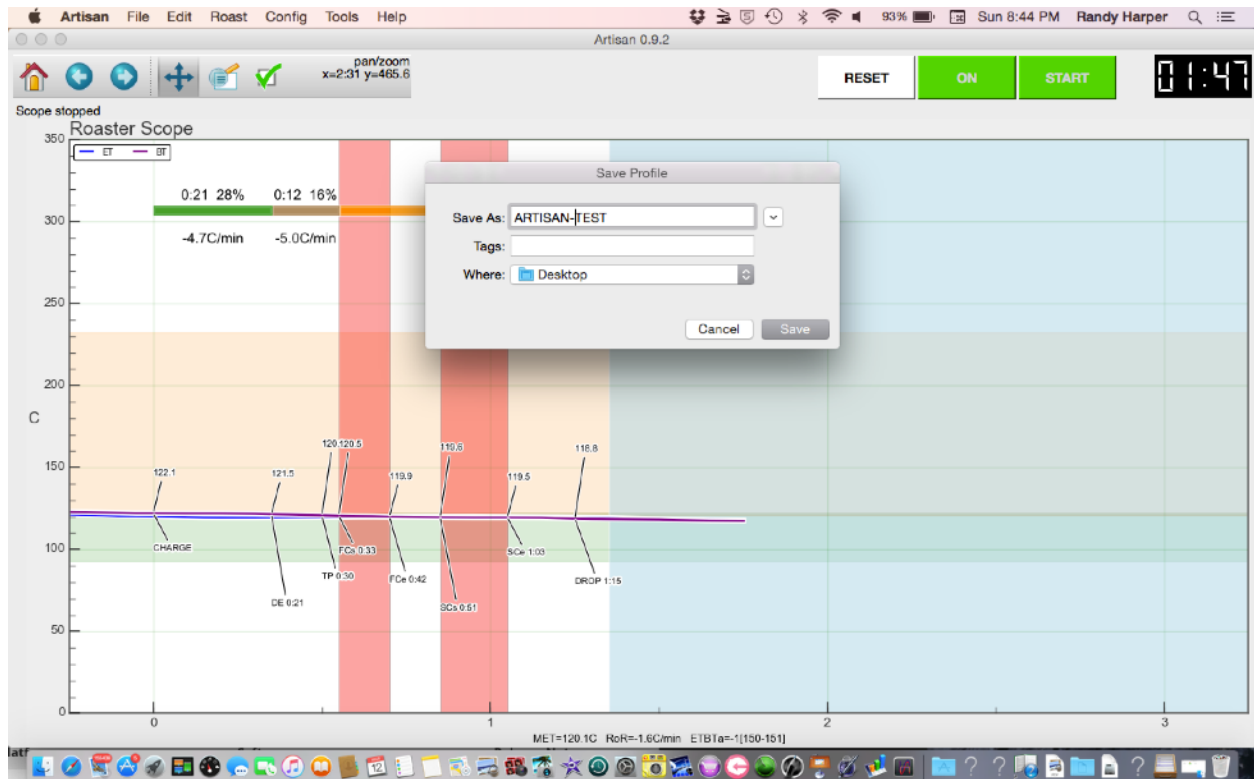
TECH@BUCKEYECOFFEE.COM

BUCKEYE COFFEE ROASTERS

AFTER DONE ROASTING IF YOU WISH TO SAVE PROFILE THEN SAVE ON COMPUTER OR DRIVE TO RELOAD AND FOLLOW LIKE A RECIPE FOR FUTURE ROASTS. THERE IS NO LIMIT TO THE NUMBER OF PROFILES YOU CAN SAVE



ANYTHING YOU CHOOSE: BEAN TYPE OR CROP AND ROAST TYPE:

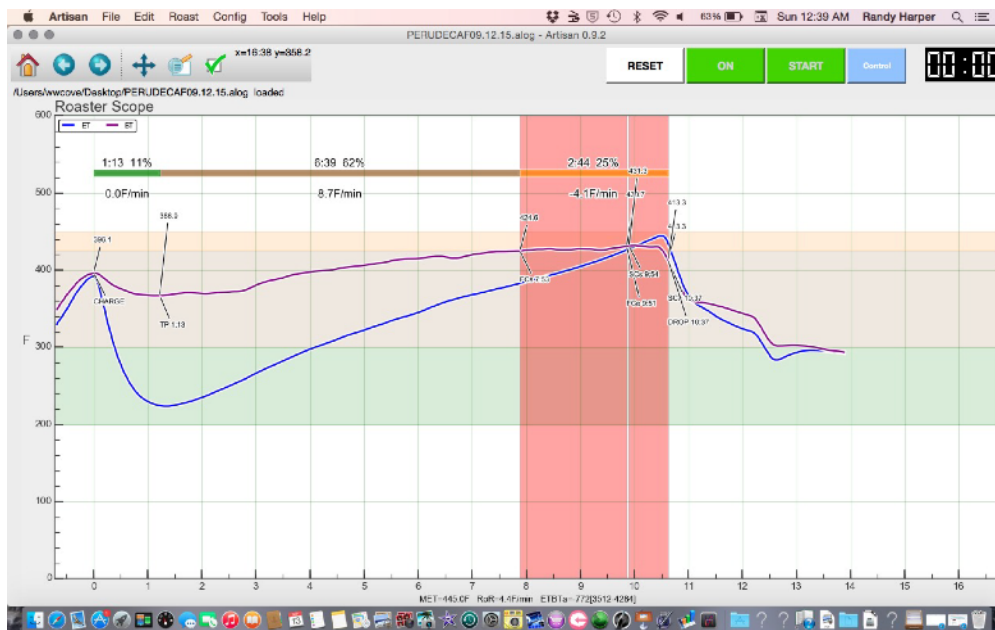


TECH@BUCKEYECOFFEE.COM

BUCKEYE COFFEE ROASTERS

**IN YOU NEED FURTHER ASSISTANCE WE HAVE VIDEOS ON THE TECH PAGE
OF OUR WEBSITE OR YOU CAN SIGN UP FOR ARTISAN SUPPORT OR EMAIL:
TECH@BUCKEYECOFFEE.COM**

EXAMPLE OF A ROAST PROFILE:



TECH@BUCKEYECOFFEE.COM