



## WINTER HISTORY HIKES



Throughout the year we'll be featuring hikes from our old schedules. Each hike will be done in the month that it originally took place but, as explained in some of the notes below, re-creating the exact route that the leader took is not always possible. Country lanes might now be paved and busy, trails may have been closed or rerouted and new trails added in their place, and what was formerly on public land might be in private hands today. No matter what, we will do our best to capture the spirit and intent of each hike, even if it means deviating from the original route or description.

Saturday, January 7 - Lake Skannatati Circular. Inspired by a January 1989 outing: "Harriman Park. An easy walk in wintry woods. Location and mileage will depend on snow condition, but it will be pretty and no more than 7 miles. Leader: Edith Brandner."

Notes: The leader of this hike wanted to offer a relaxing winter stroll through the Harriman woods, and our current leader has chosen a route which does exactly that.

Sunday, January 8 - Ellie Carren Memorial Hike at Irvington Woods. Inspired by a January 2010 outing: "Irvington Woods/Macy Park. 4-5 miles, easy to moderate. Lovely woods with several interesting trails to explore, including the well known "Hermits Grave" and the Macy Monument. Leader: Ellie Carren."

Notes: Irvington Woods was one of Ellie's favorite destinations, and she led a hike to that area at least twice a year. The photo at right, of Ellie at Hermits Grave, was taken in March of 2021, shortly before her 99<sup>th</sup> birthday.



Sunday, February 5 - Norvin Green Circular. Inspired by a February 1984 outing: "Norvin Green. Hike includes Horse Pond Mt., Burnt Meadow Trail (a new version) and northern end of the Hewitt-Butler Trail. If conditions are bad, an easy but scenic route is available in this normally rugged area. Leader: Dick Redfield. 9 miles, fairly strenuous."

Notes: The original route of this hike would have included a walk along Burnt Meadow Road but now, by using the newer Lake Sonoma Trail, the road walk can be eliminated while still following the description and enjoying all of the highlights that the leader envisioned.

Sunday, February 26 - Orchard Beach to City Island and Back. Inspired by a February 1998 outing: "Orchard Beach to City Island and Back. Walk on beach, in forest areas, and along city streets where we hope for hot soup etc. in some cozy hole-in-the-wall. Leader: Marcia Cohen. 6 miles, easy."

Notes: There may have been a "cozy hole in the wall" on City Island back in 1998, but restaurants have gotten a lot fancier (and pricier) since then. So we'll go instead to a large but casual place where we can still have lunch indoors and purchase soup, hot chocolate, etc. to warm us.

Sunday, March 5 - Mountain Lakes Park. Inspired by a March 1973 outing: "Sarah Bishop's Cave. A hike in North Salem to the top of Long Pond Mtn., from which we can see Lakes Truesdale, Waccabuc, Rippowam and Osceletta, as well as the Hudson Highlands. Sarah Bishop was a recluse during the years prior to 1800. Leader: Fred Higham. 6 miles, not strenuous."

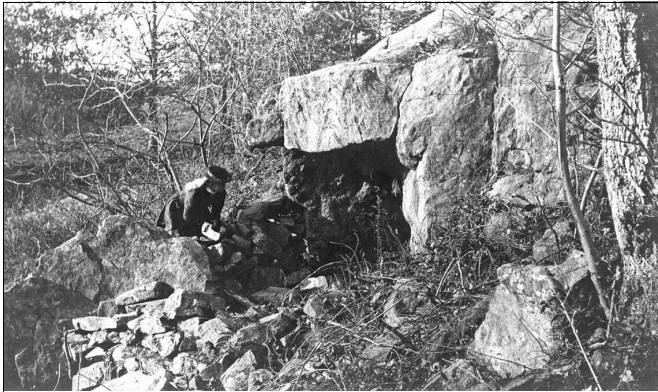


Photo circa 1890's showing Sarah Bishop's cave, from a 2019 online article in [theridgefieldpress.com](http://theridgefieldpress.com)

Notes: The route of this hike was within what is now Mountain Lakes Camp, but the cave is on private property with numerous "no trespassing" signs that cannot be ignored! While we can't go to the cave we can still hike to the view and do a circular in this county-owned park of an equivalent length, passing a point near the old route that led to the cave where we'll learn about Sarah Bishop and her solitary life in the woods.

Saturday, March 11 - Pawling Nature Reserve. Inspired by a March 1941 outing: "Camp Siwanoy and Appalachian Trail. Circular trip starting from Camp Siwanoy near Wingdale, N.Y. thru country roads to A.T. trail through wooded country with beautiful view overlooking Ten Mile River Valley and return to Camp. Leader: Henry Secan. 7 miles, not strenuous."

Notes: Camp Siwanoy, located on Duell Hollow Road in Wingdale, was popular with scouts from the Westchester-Putnam region when it was in operation from 1926 to the late 1990s. Now a private house with a gated driveway, we can still begin and end this hike near the original meeting spot on Duell Hollow Road. But the country roads that the leader would have taken to connect to and return from the A.T. have been paved over, and a bridge closure in the direction of the Ten Mile River Valley view has resulted in a one-mile roadwalk on the current A.T. So instead of heading towards the Ten Mile River Valley view, we'll take the A.T. in the opposite direction and enjoy an equally beautiful view of the Harlem River Valley.



Camp Siwanoy / AT Hike, March 1941