



Galaxie **WORLD'S
FINEST**

ARCHERY TACKLE AND ACCESSORIES

BY

CRAVOTTA BROS., INC.

EAST McKEESPORT, PA.

A

DISTRIBUTED BY

MANUFACTURERS OF FAMOUS BLACKHAWK ARCHERY AND WATERSPORTS EQUIPMENT

To the Sporting Goods Dealer:

The new "Galaxie" line by Cravotta Brothers, makers of the world famous Black Hawk Archery Tackle line, is the results of many years of concentrated study and design, dynamics, composition and salesability. Consequently, we are now bringing forth one of the most complete lines of archery tackle manufactured under one roof and by one concern, possessing all the attributes required by the most discriminating sportsmen archer, professional archer and tournament archer.

The "Galaxie" line is designed for distribution by top notch sporting good stores and professional shops. In the following pages you will see illustrated and described tournament bows that are dynamically balanced and engineered for beauty, durability, smoothness of draw, and maximum cast with maximum stability; bows designed for specific purposes of hunting and bows designed for combination and field archers; bows designed for beginners, ladies, juveniles and children; bows designed for schools, archery lanes, outdoor lanes and every type of competition.

INSTRUCTIONS TO DEALERS

In ordering the "Galaxie" line, please be sure to order by stock number where possible: bows should be ordered by stock number, name and weight, per example, B-99, Apollo @ 37#, if left hand bow is ordered be sure and indicate in the order that it is left handed: arrows should be ordered by stock number, weight and length.

Delivery is generally made within twenty-four hours of receipt of order. If there are items back ordered, items will be shipped at our cost as soon as possible and such items will be noted as back order on original invoice.

Full freight will be allowed or prepaid on all orders invoicing \$200 or more, orders less than \$200 prices will be F.O.B. our factory East McKeesport, Pennsylvania.

Any order amounting to a net of less than \$5 shall carry a net service charge of \$1.

All shipments shall be made by parcel post,

Illustrated and listed is one of the most complete lines of arrows available, including the world famous silver comet aluminum, glass arrows and Port Oxford Cedar arrows in all price ranges. These arrows are manufactured under precision quality control practiced by Cravotta Brothers and cannot be excelled.

The "Galaxie" line of archery leather accessories is one of the most complete and one of the most beautiful lines available. It includes quivers of all types and prices, arm-guards, gloves, tabs, bow cases, hats and so forth.

There is also a complete line of archery accessories required by the discriminating archer and sportsman and a complete line of archery raw materials.

Why make many purchases from many companies when you can purchase the finest of archery tackle and accessories available anywhere in the world, under one roof and in one order? GET IN THE HABIT OF BUYING "THE GALAXIE" BY CRAVOTTA BROTHERS.

united parcel, freight, R.E.A. or Greyhound. When air freight is requested, purchaser shall pay for transportation costs.

Returns—No returns shall be accepted unless permission has been prior granted by factory. All returns must be *prepaid*, and any return that is not prepaid shall be *refused*. A 10% charge of net price of items returned will be debited your account for service charge of acceptable returns.

All C.O.D. orders must be accompanied by check or M.O. to cover 25% of invoice.

Please do not ask for open account unless listed favorably in D & B, or unless accompanied by credit references from bank and three other suppliers. Please allow us time to check credit.

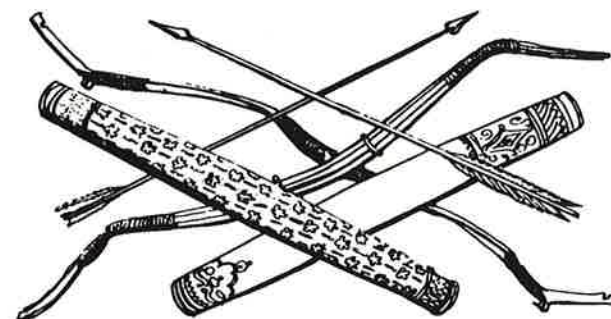
All prices are subject to change without notice. We reserve the right to change specifications of items listed in this catalog.



ARCHERY

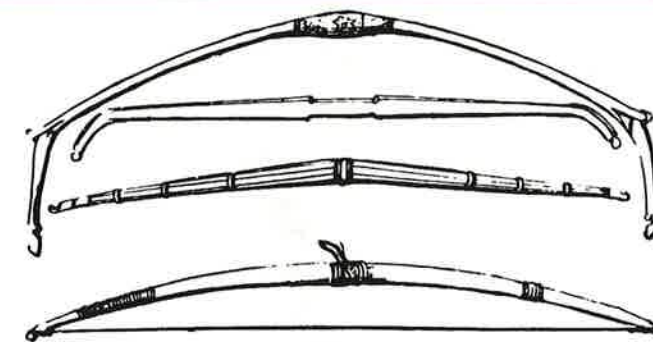
The King of Weapons

In the battle of Hastings, Oct. 14th, in the year 1066 A.D., between the Norman invaders of England and the Saxon defenders — there appeared the first organized unit of longbowmen, an integral part of the army of the Norman Invaders. In this battle the efficacy of the long bowmen became clearly defined. The Saxons, having never seen the lethal power of a longbow nor seen the efficiency of a unit consisting solely of longbowmen had little fear of this unit of archers, because of the experience with their own archery equipment. The Saxon archer had a short flat bow, poorly designed and with very poor cast and their archers were not organized as a special unit but were dispersed amongst their other troops, and had no specific function in battle or battle tactics. As the plan of battle spread out on the Channel Coast, the Saxons, under King Harold were positive of victory—they outnumbered their enemies in every phase, except archers, and of these, as mentioned before, they had no fear. The two armies advanced towards each other, but the tactics of the Normans puzzled the Saxons. The Norman swordsmen and spearmen advanced first, then the Norman unit of longbowmen, but as the opposing armies approached within range of the Norman longbowmen, they knelt and fired high into the air over the heads of their advancing swordsmen and spearmen and a rain of arrows cascaded into the Saxon ranks, creating havoc amongst them, because, if they raised their shields to protect them from the falling arrows, they became exposed to the thrusts of the Norman swords and spears. In a few decisive moments, the Saxons were in a full disorganized retreat, their dead and dying comrades clutching at deadly arrows covering the field of battle. A victory for William, The Conqueror — a victory for the longbow in battle.



Within two generations after the battle of Hastings, the longbow became the favorite weapon of both, the Saxons and the Norman, and hence became the true English bow. For the next several hundred years it was extensively used, many improvements made thru experiences gained in their constant battles with the Scots, Welsh, and in their crusades against the Saracens. The longbow was made stronger to compete with the shorter but stronger bows of the Welsh, and means were found to improve the cast so that they could compete with the range of the Saracen composite bow that could easily average 300 yards with deadly effect. By the end of the 13th Century—a period that is best known thru the stories of "Robin Hood" and his feats with the longbow—the longbow had been developed to near perfection, as were the arrows or shafts used with it. The bow was made of a beautiful yew wood and made generally longer than the height of the archer using it; his arrows were made of Norwegian pine, fletched with goose feathers (there were no turkeys in England or Europe then) and were generally from 30 to 36 inches in length.

The bows ranged in weight from 80 to 150 pounds — almost unbelievable today, but one must remember that every peasant or yeoman became an archer from almost birth, therefore his muscles were tuned to handle easily and with precision this weight of bow. The cloth yard arrows, tipped with a heavy 3-inch metal point could penetrate any known armor that existed then, to ranges of 250 yards and more. The English archer was at this time regarded as the backbone of the army, and were known for their trustworthiness and bravery.



In 1338, the famous Hundred Years War began between France and England and in the many famed battles that were fought and won by the English, the deadly efficiency of the longbow was proven. In 1346, the first big battle was fought — Edward III, had 10,000 troops and was encircled by a French army of 60,000 which included 10,000 Genoese mercenary crossbowmen. On August 26th, 1346, the battle of Crecy started with the major portion of the two armies facing each other from opposite hills approximately one-half mile apart. The Genoese crossbowmen began the battle by coming forward and shooting their crossbows. The English bowmen shot back with deadly accuracy—their bows outranging the crossbows, shooting faster, and their heavy war arrows piercing the Genoese armor as though it were paper. After the first few minutes of this deadly battle, the surviving Genoese fled in wild disorder leaving almost fifty per cent of their troops dead and dying. The French then tried their famous cavalry charge which until this time was the proven tactic that would discourage any force, but the English archers withstood their ground and at 300 yard ranges, toppled over these knights in armor. The French then tried other tactics, but nothing they did could get pass the English longbowmen. In this battle, the French lost approximately 32,000 of its troops to 150 of the English.

In consequent battles, such as Portiers, the French again learned of the deadliness of the English longbow. At Portiers, 4,000 English archers annihilated a French army of 16,000 and at Agincourt, the last battle of the Hundred Years War, 9,000 English soldiers, of which 6,000 were archers, met and defeated a French army of approximately 90,000. In this battle, 8,000 French noblemen were killed and 24,000 lesser troops.

Shortly after the end of The Hundred Years War, the War of the Roses began in England which had a duration of 30 years. These battles were usually fought between evenly matched armies of English bowmen and were extremely bloody and so horrible in their fury and devastation that they became the downfall of the English soldier and everything military so that archery, a military weapon, lost its popular support and in a rapidly descending spiral, Archery became a thing of the past. By 1600, nothing remained of archery but ballads and remembrance of its past glory; the musket had taken the place of the longbow which had been truly the ultimate weapon of the Middle Ages.

In the middle of the 19th Century in the United States, Archery began to smoulder somewhat in targetry, and by the end of the century, Archery was taught in some girls' schools with a few souls brave enough to withstand the snickers of their fellowman, using the bow in hunting.

In the past several decades, with vast improvements in the manufacturing techniques and in the use of modern materials in the construction of archery equipment — giving us the finest bows and arrows known — Archery has become the fastest growing sport in the world, a great revival for a great weapon, now used in target and field. But the ultimate—hunting, where it really excels—a great family sport, a great sport for competition and a great sport for hunting to be enjoyed by all sexes and all ages, from six to ninety. Truly, "Archery Is The King Of Sports."



Take Your Bow For A Walk

by *Ralph A. Fisher, Sr.*

Famous author of: 'THE GUIDE TO JAVELINA' and other exciting outdoor stories.

If you like to hunt nearly the whole year through, and enjoy hunting with your best girl, or the little woman trailing along with you — then "Archery" is for you! Have you ever stood behind an archer as he drew his bow in silence and loosed an arrow at an unbetrusted deer; better yet, have you watched your teenage daughter draw her bow to the anchor point of her sun-kissed cheek and send a shaft towards a running boar javelina? We watched young Sara Alice Coley, of Oklahoma City, kill a big boar on the first hour of the first morning of their three-day hunt in Arizona — with Sam Johnson and myself as the guides. It was a great thrill to see the big smile on Doctor Coley's face as we tagged that boar for Sarah Alice. They never doubted her ability — for the Coley family had made Archery a family affair — with the instructions obtained from Rex Beach, the training had just paid dividends.

Archery need not be too costly to become a family sport, for care shown the cheapest of tackle will provide long hours of good, clean, everyday fun for each member of the family. One slogan we hear where ever archers are stalking the game, or shooting the breeze, is, "There is no Toy Bow and Arrow," and others quote it as, "There is no Toy Archery Set." Anyway you wish to say it, it is true, and I like to think that this one slogan has made the sport the safe sport that it is today.

Archery shows an increase in every state, city and town in our country. It has been a long pull through the years, years of hard plugging, for like the air-rifle, sling-shot, and blow-gun, the bow and the arrow was declared illegal in many of these cities and towns.

You need not reserve your bow hunting for just the autumn months when deer, antelope, bear and wild turkey hunting becomes legal game for the archers in many states now. You can, at little expense pick up the bow, a quiver full of arrows and go predator hunting any day of the year. You can change over that hunting bow into a snappy fishing reel with ease and hunt rough fish the year around in nearly every state of the nation — and fellow, when you sink a shaft into a twelve pound Verde carp, have him run away with arrow, line and the bow — then wade belly-deep to retrieve the whole shooting outfit, only to get stranded in some quicksand and call for your better-half for a helping hand — you begin to understand why fellow archers say, "Taking Your Bow For A Walk is sport."

You can enjoy too, the fast growing sport of "Having the game hunt you." That's right, you purchase a Game Call, and learn how to produce a tone that sounds like a dying rabbit, swamp bird, or victim trapped by a predator — the wildlife critters come running at you. I've had coyotes come in three at one time, to within twenty and thirty yards to investigate. And when that "Warrior" Blackhawk speaks, well, it's like the sudden swift dive of the hawk that spells sure death to his live target. I've watched an archer friend and his wife call varmints — to watch my view finder and diving hawk at the same time is thrilling, and to see the companionship of husband and wife brought closer by an all enticing sport is still another thrill that becomes part of bow hunting.

In my town, we now have a Youth Club, organized for children from six to 19 years of age, both sexes — and not one parent objected to their child learning the art of Archery — and in several cases it has converted mother and father into the sport, too. National Clubs with dues paying membership, award pins and medals to bowhunters for the big and small game kills made while bowhunting can create a great deal of clean competition in the family that enjoys hunting together with the bow — for, as in the case of little Sarah Alice Coley, Doctor Joseph and brothers Charles, are still trying to equal her score.

You need not join a club to enjoy target shooting — you own back yard should provide one for you. I'll wager that as soon as Bobby or Barbara start shooting a few arrows from that Christmas Bow, that mother and dad will be pulling a few strings too. So, Bobby, if dad suggests that, "You Take Your Bow For A Walk," go along with the idea for I feel sure that from then on you will hunt with the best sports in the world, and enjoy the safest hunting of all.

As a hunter's guide, I, at one time, thought bowhunting had no place in the field with high powered rifles. I had heard, too, tales of cripples running around with arrows protruding from their flesh. Then came a day when I reserved a 3-day hunt for four archers from Utah. These four hunters stalked their javelina in as much silence as a man walking through brush, and over loose mountain rocks can create. And putting four men with bows within easy killing distance of 'spooky' javelina is an art too. But, when four bowhunters tagged four javelina within twenty-five minutes of the second morning's hunt, the old guide accepted Archery very fast. From that frosty morning, deep in Pinto Creek range of Arizona, until the present day, I've watched more than fifty archers make good, clean kills on game animals, and have yet to have the first cripple escape to suffer.

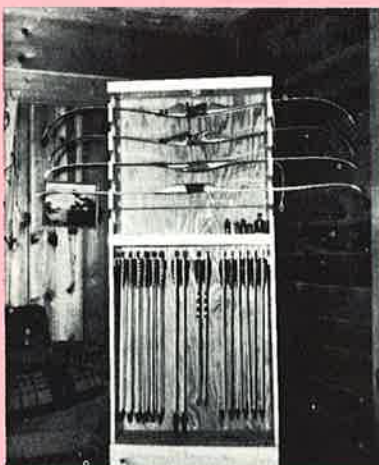
Our 1958 Kaibab North Special Archery Hunt for deer provided the press with this statement issued by the game rangers and checkers on duty. "We saw no deer crippled in the days of the hunt, and found no crippled deer in the hunt area after the archers had all checked out." Sure, just as a few poor sports with a high powered rifle have closed a few gates to many, so have a few greedy fellows with a bow created a bad taste among law makers, and enforcement officers by riding the bed of a pickup with a loaded bow. But, that fellow is not an archer, he won't be around long.

Have no fear, for when you take that bow for a walk, you can, with practice and time, equal the feats of the hunter that bags a deer with a .300 caliber bullet; or the neighbor that killed a lion with a pistol. That hunting bow in your hands is just as much a deadly weapon as the pistol or the rifle. Bear it in mind, too, when you "Take Your Bow For A Walk."

A large Boar Javelina - taken in Arizona - 1953 - one shot thru the heart - Bill Mastrangel.



Here's the lion I killed with your short Hornet. It's a fine bow. Bill Mastrangel, March, 1958



A well constructed archery tackle cabinet can be as attractive in the home as any gun cabinet . . . here is a cabinet made by archer James Kilby for the total cost of \$12.00 and spare time. It holds the bows and tackle of his family of six.



Two husky carp killed in the Verde River, in Arizona by Payson Archer James Kilby using a Black Hawk "Warrior" Bow.



Taken in British Columbia with a 58 lb. bow and wood arrow in 1956. It is the Bow and Arrow Boone and Crockett world's record Grizzly. First arrow was about 55 yards Bill Mastrangel



Buffalo shot with one arrow through the heart in Gillette, Wyoming for T.V. Movie.



Paul Beondi, Pittsburgh, Pa.



900-lb. Trophy Elk - taken in 1955 - Wyoming. A 111 yd. shot. Bill Mastrangel

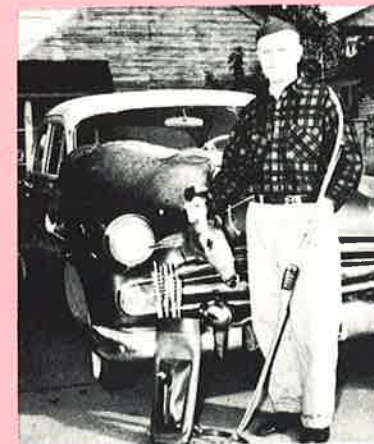


Bill Mastrangel and his trophy buffalo - largest American animal ever downed by a modern bowhunter.



A trophy size Rocky Mt. Goat - taken in British Columbia - 1956. One of my roughest hunts. A 30 yard shot. Bill Mastrangel

A Ptarmigan grouse-taken in Canada 1956. Made a fine supper. Bill Mastrangel



This is the 140 lbs. dressed doe that I killed with the first shot from the Warrior 45lbs. bow. I shoot a 26" arrow with a Hills' Hornet blade. The arrow went clean through. This is my fifth deer with the bow. I camouflage the bow with your tape. John Knudsen, Rineland, Wisconsin



Norman Keeth, Meridian, Idaho archer shows what the modern archer needs to enjoy fish hunting the year round.



Hunting javelina party: standing left to right are Doctor Coley, Dane Steelman, David Steelman, Sarah Coley (first boar killed) and Charles Coley. Kneeling: Cliff Krohn, guide Sam Johnson, and instructor Rex Beach.

TARGET ARCHERY—With its array of colorful 48-inch targets, is the oldest form of competitive Archery. The gold centers scores nine points, the red ring counts seven, the blue five, the black three, and the outside one ring gets you one point.

Seventy-four years ago, the long line of bow-bending enthusiasts began shooting seventy-two arrows at the pre-measured distance of 100 yards, 48 arrows at 80 yards and twenty-four at 60 yards. This combination of one hundred and forty-four constitutes the English York Round for men.

Six golds have been shot at all distances except 100 yards in competition. Only seven times to date have Archers shot an end of six perfect score of fifty-four points.

After shooting two York Rounds at our National Tournaments, we turn to the first of the shorter American Rounds. Here, the keen-eyed Archers pound away thirty arrows at 50 yards and finally move up to forty yards with renewed determination to shoot their last thirty arrows at the forty-eight inch target. Only once in competition has an Archer shot all thirty arrows into the gold at 40 yards.

The fair ladies also shoot the American Round along with two National Rounds of forty-eight arrows at 60 yards, and twenty-four shots at the fifty yard line. They also shoot two Columbia Rounds of twenty-four arrows at 50 yards, 40 yards and 30 yards.

When competing in the International Tournament overseas, where the language barrier is overcome by the bond of Archery enthusiasm, the men shot thirty-six arrows at 90 meters (98 yards, 18 inches) 36 arrows at the 70 meters (76 yards, 19 inches). Shooting is done with the same 48-inch face we shoot at in our York and American rounds. The difference being an added ring inserted in the gold and also separating the different colors, making the scoring 10, 9, 8, 7, 6, 5, 4, 3, 2, 1.

Then a shorter round of 50 meters (54 yards, 21 inches) and 30 meters (32 yards, 29 inches) is shot using a smaller target. The rounds are shot twice.

The ladies shoot 70, 60, 50 and 30 meters—36 arrows at each distance. Shooting each distance twice.

FIELD—With the advent of bow hunting, Archers started looking around for an Archery game similar to hunting and came up with what they called Field or Roving Archery.

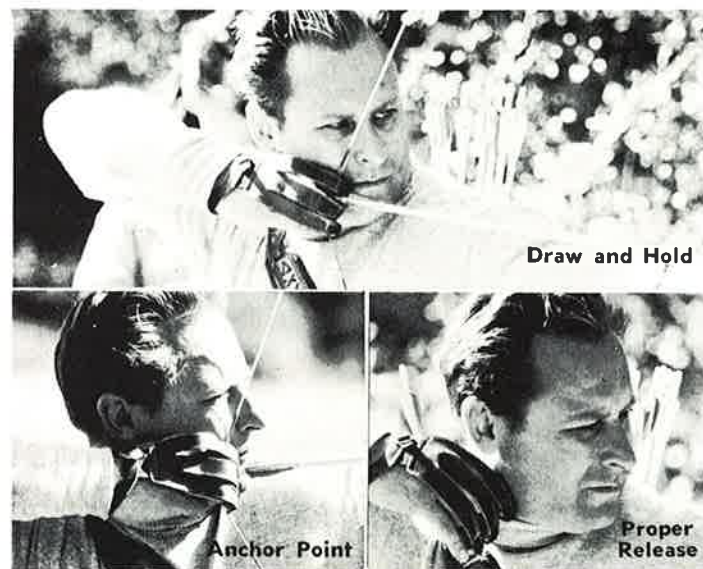
Patterned after golf, the targets are laid out in sets of fourteen targets; the targets vary at distances from six to eighty yards utilizing the hills, trees and bushes to simulate hunting conditions. Entering the range you see a post marked target No. 1. You looked around to find the target; finally spotting it way off in the distance on a small rise and nestled among the trees eighty yards away. The twenty-four-inch target with its twelve-inch white five ring, the rest is colored black and counting three, look awfully small in the distance. You settle down to the business at hand. Taking careful aim, you release and watch the arrow fly in a beautiful long arch and plunk into the straw. You move up to the seventy-yard position, take careful aim, and release. After what seems an eternity, there is a spat as the arrow hits dead center for a pin wheel five. Nothing to this game as you move to position three and sixty yards from the target. Once again you pull back, release and watch with dismay as the arrow digs up the dirt in front of the bale. You'll do better on the next one you tell yourself and move up to the fifty-yard position four. Taking more time with this shot, you

draw the string using the back muscles and relaxing the wrist; you take careful aim, settle down, pushing forward and pulling back in a straight line—the release—and holding the bow arm up and steady, the arrow sails gracefully and plunks into the white five ring. Walking up, you pull your arrows and tally the score—a pair of fives for a ten.

On to the next target—No. 2 “Oh, this is easy, just twenty-five yards away.” Of course, the target is only twelve inches with the five ring six inches and there are some bushes next to the line of flight, but it won't bother you. You aim, release the arrow—glances off a twig and plops into the five ring. “Kind of lucky,” but you'll take it. Now you move over slightly so as not to hit the bush. You concentrate on the center aiming spot and shoot another five. Two more fives and you'll have a perfect twenty. You work a little harder on the next one and get a rewarding five for your effort—one more for your twenty. You start to tighten up and perspire a little as you draw the next arrow—“this one has got to be good.” You hold extra long—start to release—change your mind—hold a little longer—release and jerk the arrow off of the target for a complete miss. “Oh well, you tried.” You count your fifteen and move to the next target.

The target is set up on a hill. The shooting positions are fanned out from the target under a tree—thirty-five yards shooting at an eighteen-inch face that has a nine-inch five. You shoot an arrow from each of the four positions, scoring a twelve—“you just didn't hold close enough.”

And so on, for the rest of the targets, enjoying their challenge and the beauty of your surroundings. Then ten-yard bird shot with the six-inch face, the twenty-four-inch target on the long down hill sixty-five yarder, the friendly forty with its eighteen-inch face, the not-too-bad forty-five and tough fifty with eighteen inches to hit, the nerve wracking thirty yarder where you try to



hold close enough to keep on the twelve-inch target. You pit your skill against the challenging sixty and fifty-five yard targets twenty-four inches across. The thrill of shooting through the trees at an eighteen-inch face on the forty-five, forty, thirty-five and thirty yard walk up, and ending with the welcome close fifteen yard and the kinda tough twenty-five yarders with their twelve-inch targets.

For the novice or beginner in the sport of Archery, the selection of equipment often creates a problem because of “not knowing.” There are a few fundamental steps one can take in this selection.

First and foremost—select the equipment that is made by a manufacturer who is qualified to manufacture archery equipment; one that is large enough to have the finest of modern equipment in his factory and buys the best of raw materials for the production of his equipment, one that employs skilled men who know archery, one that is constantly researching for improved design, better material and improved method of production, and finally, a manufacturer who is financially able to give service and who stands behind his products and guarantee.

WEIGHT OF BOW—Choosing the proper weight of bow to use is often a real puzzle. Today's better bows are laminated bows that do not require the pull of selfbows, or bows made of one solid material in order to reach the distances required in any field or target course. Today's better bows have more thrust and penetrating power than the selfbows; therefore, lighter bows can be used in hunting. Do not make the mistake because you are a man that in order to be manly, you must have a heavy bow. A person is far more accurate in his shooting, and will achieve the utmost in enjoyment and satisfaction if the bow can be handled with ease and comfort. Try the bow, hold it in position without an arrow; draw to your shooting position still without arrow and hold it for a silent count of ten; then release the string slowly. Knock an arrow in place and re-draw to your shooting position. Again holding the bow and arrow in this position until you have reached a silent count of ten, if, while in this shooting position, your arm holding the bow does not quiver and move, and if the tip of your arrow as you are sighting on your target is still and you feel comfortable; then, you have the proper weight bow.

An average good weight for a man for all around shooting is between 35 pounds and 45 pounds. For a woman, between 25 to 35 pounds; for children, depending on their physical makeup, from 10 to 30 pounds. Galaxie bows are the easiest to draw, to hold, and the most accurate. Be sure to ask for GALAXIE.

SELECTING YOUR ARROWS—After selecting a bow to fit you, your next important step is the proper selection of arrows. The most important features to look for in selecting arrows are: proper length of arrow, spine and weight of arrow.

In selecting the proper length of arrow, a good rule to follow is as follows. Stand erect, extend both your arms straight in front of you, palms facing each other, then move the hands toward each other until the tips of the fingers meet, have someone measure the distance from your chest to the tips of your extended fingers and the resultant measurement is the length of the arrow required.

The arrows should be spined (stiffness of arrow) to match the weight of your bow. For example, if you have a 37-pound bow, your arrows should be spined 35-40 pounds. Proper spined arrows are important to prevent the arrow from shooting either right or left. Each of your arrows should be closely matched in weight in order that you gain the same cast from your bow. Obviously, a heavier arrow will drop more quickly than a light arrow. Cravotta Bros. is proud of its meticulous care in the manufacturing of its arrows—they are beautiful, handcrafted, closely matched in weight and spine.

For the best—Choose the GALAXIE.

STRING YOUR BOW PROPERLY—this is very important. With every Galaxie bow, you will find instructions on how to string your bow. Follow these instructions closely, many bows are damaged beyond repair because of improper stringing, many are broken because some novice attempts to string a bow backwards.

When going out to shoot, always carry on your person or in your quiver a rag that has been saturated in wax. After shooting, wipe your bow with this waxed cloth. A few seconds time and your bow will be kept in beautiful condition for its life. Be sure that you have extra strings in your quiver and also have a cake of string wax. Before stringing, wax your bowstring. A well-waxed bow string lasts indefinitely and performs better. Buy an arrow tassel to hang on your quiver—not only decorative, but after retrieving your arrows from the mud, grass or target bale, simply wipe arrows before placing into quiver. This insures longer life and better shooting for your arrows. Keep quiver clean and the arrow rest on bow will be clean. Never shoot a broken or cracked arrow.

Cravotta Bros. manufactures the finest of archery equipment and the most complete line—the best archery accessories.

BUY THE GALAXIE LINE by Cravotta Bros.

GLOSSARY OF ARCHERY TERMS

- ADDRESS**— To prepare to shoot.
- ANCHOR POINT**— The point on the archer's face to which the bow string is drawn on every shot.
- ARCHERY GOLF**— An adaption of the game of golf to the sport of archery. Players shoot for the holes and score according to their accuracy. Most archery golf is played in the west and mid-west but this sport is fast expanding.
- ARROW PLATE**— A piece of material, either hard or soft, which is inset into the bow at the point where the arrow traverses the wood. In target bows, the arrow plate is hard, in hunting and field bows, it is soft, to deaden the noise.
- ARROW REST**— A small projection at the tip of the bow handle. The arrow rests thereon during the draw. Formerly used mostly on flight bows, it is now a part of most good bows.
- BACK**—The side of the bow which is always facing away the archer.
- BELLY**—The side of the bow which is always facing the archer.
- CAST**— A term used to describe the distance over which a bow will drive an arrow.
- COMPOSITE**— A bow made up of more than one substance.
- END**— In the U.S., six arrows shot consecutively in a target round.
- FISTMELE**— Today, six inches. Formerly, the distance between the bow and the string when the bow is strung, measured by placing the fist on the bow handle and raising the thumb toward the string.
- FLETCH**— To put the feathers on the arrow.
- HANDLE OR RISER**— The center portion of the bow, rigid and deep.
- LIMB**— Either the upper or lower half of the bow.
- LOOSE**— The actual release of the drawn bow string, one of the most important parts of any style of archery.
- NOCK**— Either that part of the arrow which is fitted to the string or the two ends of the bow itself where the bowstring is fitted.
- NOCK POINT**— That point on the string where the arrow is nocked at all times. Often marked by extra serving.
- OVERBOW**— To draw a bow too heavy for the individual archer.
- OVERDRAW**— To draw the bow past the limit set for it by the bowyer. The cardinal sin of archery.
- POINT OF AIM**— An aid in target shooting, to establish the flight path of the arrow so as to intercept the target at center.
- REFLEXED BOW**— Any bow whose limbs spring toward the back when it is unstrung.
- ROUND**— A series of arrows, shot at a pre-fixed distance.
- ROVING**— A game played in which the archer-players select random targets and shoot a predetermined number of arrows at them in turn. The targets are usually selected by the winner of the previous target.
- SELF**— A self bow is any bow made of only one substance, i.e. yew. A self arrow is unfooted.
- SERVING**— Extra protection for the bow string, applied where the string contacts the bow nocks and also where the arrow is nocked in shooting.
- SPINE**— A term used in archery to describe the flexibility, elasticity and stiffness of an arrow shaft in relation to its thickness and weight.
- TAB**— A flat piece of leather used on the hand to protect the fingers of the archer.
- TACKLE**— General term to describe any or all of an archer's gear.
- TILLER**— A stick used to hold a bow at the draw while it is being made. To balance the limbs.
- WEIGHT**— In describing the bow, the number of pounds of pull necessary to bring the arrow to full draw with the bow.



stand the inherited urge to shoot, and the other sport lends itself readily to every member of the family.

Requirements and preparation for this family sport is simple. A few bales of hay wrapped in old burlap to prevent the straw from littering the floor, a basement, game room or play area, a few target faces, light bows and arrows for each member of the family and all this fun is yours to enjoy as an indoor sport. In the Spring and Summer and Fall, your target mat can be moved outdoors — back yard or side yard, in your driveway or even in your garage and a great outdoor sport is achieved.

It is an interesting fact that the desire to win, to be the best, is in all of us. Father wants to be top, mother wants to beat father, junior and his sister want to top the family. And with each additional shot, this game becomes more and more exciting and more and more enjoyable with the laughter and comments at each meeting attracting your neighbors and friends. A few moments of watching your family shoot creates in your friends and neighbors that same desire to try their luck. Once they try, they want to become archers, and invariably they will want their family to join in the competition and fun galore.

Archery, although a safe sport, can be very dangerous. The bow and arrow is not a toy. Therefore, as in any other sport, there are fundamental rules of safety to observe: (1.) Never point an arrow at a person; (2.) Never shoot at a target held by a person; (3.) Never shoot at a target unless you know what the target is and that there is no one behind it or adjacent to it. These simple rules of safety are easy to remember and to observe — making this sport the safest of all.

It becomes a simple matter in any community for a group of families to get together and have weekly archery meets. A place to meet can be readily available if the community does not have a meeting hall. Contact your school directors or your parish church or your nearest fire hall. Any of these have facilities that can be used for winter indoor archery shooting. In every community, there are available archery instructors that belong to archery clubs, who, if contacted would be only too happy to set up rules and instruct in the art of archery and safety. These community archery meetings for all the members of the families can be inexpensive, full of fun and extremely interesting and exciting if the participants are formed into several or more teams that compete with each other, having the best teams challenge or meet other teams from neighboring communities. There are even competitive tournaments by mail that can be entered into to make these indoor shoots more exciting and interesting. The end results are amazing — your family enjoys all the thrills and excitement of this greatest and one of the oldest of competitive sports; the family becomes more and more skilled in archery; they are better sportsmen because of the competition with others; are drawn closer to their friends and neighbors, and closer to people of other communities. While enjoying this sport, a person also reaps the physical benefits derived by the beneficial exercises afforded by this sport to anyone and everyone — benefits recognized and recommended by the medical profession, even to sufferers of heart disease. Although not too strenuous, archery develops coordination, sight, and posture. It is excellent for lungs and chest development, and a great sport to overcome that feeling of awkwardness. Truly, Archery is the "King of Sports" and can be the stimuli for more integrated community social affairs. These community groups often can be and are the spark plug for the formation of a target and field archery club — a meeting place for more skill, competition and fun.



A beautiful day out with husbands and wives and family.



A relaxing picture of family fun.



Real competition for family groups.



68 years young and still going strong.



APOLLO - B-99

Illustrated

The finest example of the Bowyer's art available anywhere. Unexcelled in engineering, in beauty, in balance, in ease of use and in workmanship. The Apollo is the ultimate in bow design. Limbs are constructed with precision ground, tapered laminations and combined with the finest glass backing, Scotchply or Gordon's Bow Tuff, bonded together with our special Epoxy adhesive. Riser is constructed of rich black wood with a contrasting band with the "Galaxie's" own Ebon-Wood, with contrasting bands and having the face decorated in contrasting colors.

The Apollo is a true center shot bow with hand fitting thumb rest, 7" window, limbs having complete smooth curves.

Weights available from 25 pounds to 50 pounds—Length 68" right or left hand. Packed one to a carton, approximately 6 lbs. List price including a beautiful flannel bow case and arrow rest.

VENUS - BV-99

Not Illustrated

The woman's counterpart to the magnificent Apollo. Same specifications as the Apollo.

Weights available from 20 pounds to 40 pounds—Length 68" right or left hand. Packed one to a carton, approximately 6 lbs. List price including flannel bow case and feather fletching.



Face View

PRECISION DESIGNED • SKILLFULLY CRAFTED • CHOICE MATERIALS

Greatest Bows in the World . . .



GALAXIE BOWS



TITAN - B-98

Illustrated

Another star in our "Galaxie" of top tournament bows, depicting grace of design, stability and beauty. Constructed with the same selected materials and skilled craftsmanship incorporated in the Apollo, having the same specifications that insure top performance.

Weights available from 25 pounds to 50 pounds—Lengths: 66" or 69"—right or left hand. Packed one to a carton, approximate shipping weight 5 lbs. List price including beautiful bow case and feather rest.

\$99.95

LADY TITAN - BLT-98

Not Illustrated

The woman's counterpart to the Titan, having the same specifications as the Titan.

Weights available from 20 pounds to 40 pounds—Length: 64" or 66"—right or left hand. Packed one to a carton, approximate shipping weight 5 lbs. List price including bow case and feather rest.

\$99.95

Face View



Back View

Greatest Bows in the World . . .



GALAXIE BOWS



LORD - B-97

Illustrated

Another star in our "Galaxie" of unexcelled tournament bows—following the same principles in design as the incomparable Apollo and Titan. Smooth—fast—beautiful. The riser is constructed of rich black walnut incorporating hand fitting pistol grip and thumb rest and 7" window. Back of riser section is decorated with varicolor laminated fiber glass—face of riser section decorated in contrasting fiber glass decor. Limb specifications are the same as the Apollo and Titan.

Weights available from 25 pounds to 50 pounds—Lengths: 66" or 69"—right or left hand. Packed one to a carton, approximate shipping weight 4 lbs. List price including feather rest.

\$89.95

LADY - BL-96

Not Illustrated

A must in our "Galaxie," this star is the woman's counterpart to the Lord having the same specifications as the Lord.

Weights available from 20 pounds to 40 pounds—Length: 64" or 66"—right or left hand. Packed one to a carton, approximate shipping weight 4 lbs. List price including feather rest.

\$89.95

Face View



Back View

PRECISION DESIGNED • SKILLFULLY CRAFTED • CHOICE MATERIAL • FACTORY GUARANTEED

PRECISION DESIGNED • SKILLFULLY CRAFTED • CHOICE MATERIAL • FACTORY GUARANTEED

Greatest Bows in the World . . .



GALAXIE BOWS



SATURN - B-95

Illustrated

Another star in our "Galaxie" of fine tournament bows. A bow designed for tournament and field work, possessing all the qualities of much higher priced bows, incorporating design, engineering and beauty, combined with the skill of our top Bowyer's craft and retailing at unbelievable prices. This bow is constructed with the same specifications as our incomparable Apollo, Titan and Lord. Riser section is constructed of rich black walnut, with 7" window, pistol grip and thumb rest. Incorporated in this design, back and face of bow are decorated with contrasting colors. A bow that will meet the requirement of the most discriminating archer at a moderate price.

Weights available from 25 pounds to 50 pounds—Lengths 66" or 69"—right or left hand. Packed one to a carton, approximate shipping weight 4 lbs. List price including feather rest.

\$79.95

SATURN II - BL-95

Not Illustrated

The woman's counterpart to the Saturn, same specification except available 66" or 64" lengths.

Weights from 20 pounds to 40 pounds—right or left hand. Packed one to a carton, approximate shipping weight 4 lbs. List price including feather rest.

\$79.95

JUPITER - B-94

Illustrated

The twinkling star in our "Galaxie" line of fine bows. A bow that has universal uses, designed for tournament shooting, field shooting, target shooting and hunting.

A beautiful designed bow, balanced, terrific cast, stability and smoothness of draw. Riser section is constructed of rich black walnut, handsomely decorated—7" window—pistol grip and thumb rest. A beautiful bow—for the most discriminating archer—at an unbelievable price for such a fine handsome bow.

Weights available from 25 pounds to 60 pounds—Length: 66". Packed one to a carton—approximate shipping weight 3 lbs. List price including feather rest.

\$69.95

GALAXIE BOWS



MARS - B-93

Illustrated

A shining star in the "Galaxie" line of top bows. A bow designed with the hunter in mind, compact, rugged and beautifully designed for ease in hunting in the fields and woods. Laminations are made of top hard rock maple incorporated with the finest fiber glass available, welded together with our formulated Epoxy adhesives. Riser section is constructed of rich black walnut. Features full working recurves, true center shot, 7" windows and pistol grip riser.

Weights available up to 60 pounds, over 60 pounds add \$5.00 to list price. Length: 57½", string length: 53½"—right or left hand. Packed one to a carton, approximate shipping weight 2½ lbs. List price including feather rest.

\$59.95

VULCAN - B-92

Illustrated

A glittering star in the "Galaxie" line of bows. A beautiful all around bow for the discriminating archer. Constructed with a combination of precision ground top quality, hard rock maple laminations welded with the finest of glass backing and facing available. Riser is made of rich black walnut featuring true center shot, true full working recurves, 7" window and pistol grip. A beautiful bow having amazing speed and flat trajectory.

Weights available from 30 pounds to 60 pounds—over 60 pounds add \$5.00 to list price. Length: 66", string length: 62"—right or left hand. Packed one to a carton, approximate shipping weight 2½ lbs. List price including feather rest.

\$49.95

NEPTUNE - B-91

Illustrated

The medium price bow in our "Galaxie" of stars. Price does not reflect the beauty, quality and shooting performance. Constructed with the combination of precision ground laminations, combined with beautiful fiber glass facing and backing. Features 7" window, true center shot, riser made of rich black walnut.

Weights available from 30 pounds to 60 pounds—over 60 pounds add \$5.00 to list price. Length: 66", string length: 62"—right or left hand. Packed one to a carton, approximate shipping weight 2½ lbs. List price including feather rest.

\$39.95

PRECISION DESIGNED • SKILLFULLY CRAFTED • CHOICE MATERIAL • FACTORY GUARANTEED

GALAXIE BOWS

← PLUTO - B-90

Illustrated

A bright star in our "Galaxie" featuring a beautiful working recurve bow. A bow designed for women, beginners, juveniles. The bow is constructed incorporating the same specifications as the Neptune, amazing ease of draw, cast and flat trajectory.

Weights available from 20 pounds to 45 pounds—over 45 pounds add \$5.00 to list price. Length: 62", bow string length: 58½"—right or left hand. Packed one to a carton, approximate shipping weight 2½ lbs.

List Price \$29.95

NIKE - B-89 →

Illustrated

A star in our "Galaxie"—a must for your display shelves. An amazing bow for the money. Features glass backing and glass facing, maple laminations, deflexed limbs, walnut riser and 6" window. A marvelous bow for women, children, schools and out door archery ranges—rugged and beautiful.

Weights available from 20 pounds to 50 pounds. Length: 60", string: 56"—right or left hand. Packed two to a carton, approximate shipping weight 3 lbs.

List Price \$19.95

← CERES - B-88

Illustrated

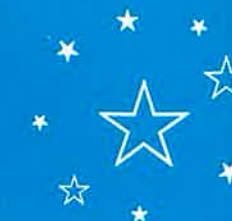
The children's star in our "Galaxie" of fine bows. This is the only laminated true working recurve bow on the market priced so amazingly low. Designed for children ages 6-12. Features maple laminations, composition facing and backing, straight handle, cut-in arrow rest in riser, nylon bow nocks and dacron string. A must to complete your line of top quality bows of every need for every age.

Weights available from 15 pounds to 30 pounds. Length: 54", string: 50", draw: 25"—right or left hand. Packed two to a carton, approximate shipping weight 2½ lbs.

List Price \$10.95



Galaxie ARCHERY SETS



Galaxie-PLUTO TARGET SET-B-90-S

Not Illustrated

A beautiful set consisting of the Galaxie Pluto Bow, one 600-S quiver, one 510K glove, one 301 armguard and six target arrows to match weight of bow.

List Price \$39.95

Galaxie-PLUTO HUNT SET-B-90-SH

Illustrated

Consisting of the same items as the Pluto Target Set, except set consists of three field arrows and three hunting arrows.

List Price \$41.95

Approximate shipping weight 5 lbs.

Galaxie-NIKE TARGET SET-B-89-S

Not Illustrated

A beautiful set for the price-conscious buyer. Set consists of the Nike bow, one 660-S quiver, one 510K glove, one 301 armguard, six target arrows and one 12" color target face.

List Price \$29.95

Galaxie-NIKE HUNT SET-B-89-SH

Illustrated

Set consists of same items as above, except instead of target arrows, contains three field arrows and three hunting arrows.

List Price \$31.95

Approximate shipping weight 3 lbs.

Galaxie-CERES SET-B-88-S

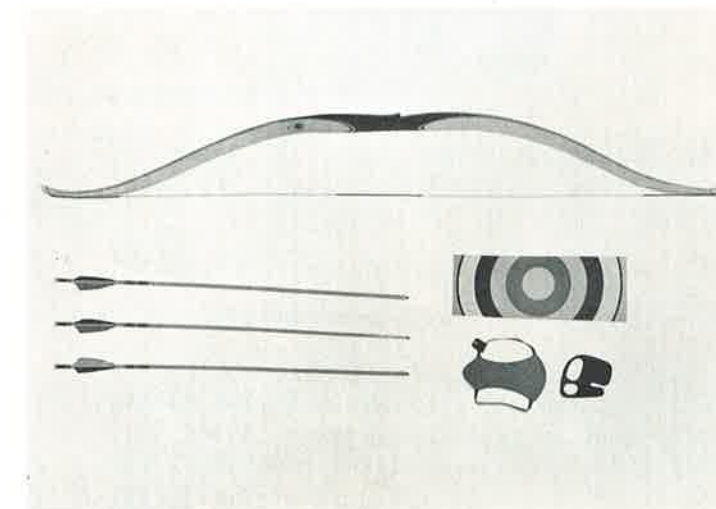
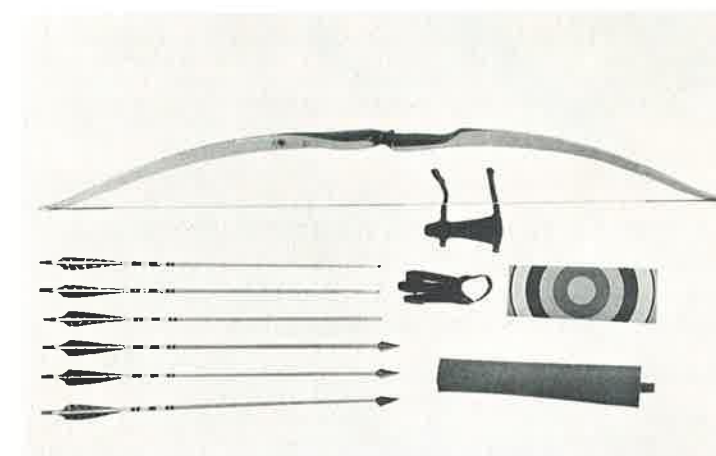
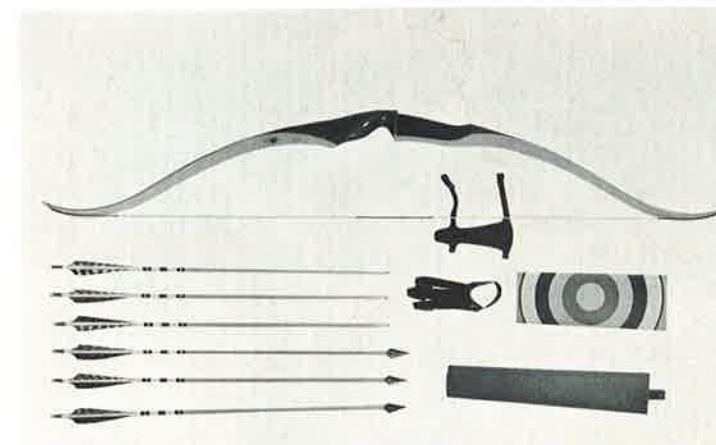
Illustrated

A beautiful archery set for children, consisting of the Ceres bow, a laminated, composite full working recurve bow, dacron string, three arrows, one finger tab, one leather armguard, one belt quiver and one paper target face.

Weights: 15 pounds to 30 pounds. Shipped in master cartons of six sets and 12 sets.—Weight of cartons—16 lbs. and 31 lbs.

Can be shipped in less units

List Price \$14.95



Galaxie BOW FISHING

BOW FISHING

Bow fishing is one of archery's most thrilling phase, it is generally enjoyed in the spring when fish are spawning. The sport is permitted in the majority of the states, especially fishing for rough fish, such as carp and garfish, etc. The "Galaxie" line of bowfishing is complete and properly designed. Do not miss this thrill. Buy "Galaxie" bow fishing equipment and enjoy this aquatic hunt.



F-10 REEL

A large fishing reel, easily attached to your bow by taping the metal straps of the reel to the bow. Reel is approximately 5" in diameter, made to sight and shoot through the reel at fish.

List \$2.95



F-11 REEL

An economical, tough plastic reel easily attached to your bow with tape, equipped with heavy fish line.

List \$1.75

F-12-A ARROW

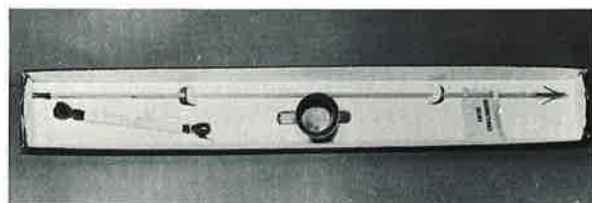
Famous "Galaxie" solid aluminum fish arrow, equipped with removable fish point. Arrow may bend, easily straightened—will not break.

List \$2.00

F-12-G ARROW

The "Galaxie" glass fishing arrow an unbreakable, epoxy fiber glass, fishing arrow, equipped with "Galaxie" removable fish barbed head, for ease of removing arrow from catch.

List \$2.25



F-11-S GALAXIE FISH SET

"Galaxie" fish set, economical but complete, to enjoy the thrill of bow fishing consists of F-11 fish reel and line and F-12-A aluminum fish arrow with barbed fish head.

List \$3.75

F-11-S-G "GALAXIE" FISH SET

Same specifications as above except—Glass fish arrow, instead of aluminum.

List \$4.00

F-13-P ARROW HEAD

"Galaxie" fish point made from finest steel ferrule that fits on shaft, steel barb, and removable steel pointed head loosely applied to shaft, removable head for ease of removing from catch. Two sizes: 5/16" I.D. and 11/32" I.D.

List \$0.75



Ferrule

Barb Point

Complete Point

GALAXIE ARROWS

The "Galaxie" line of arrows, is the most complete line of top grade arrows that the combination of selected top grade raw materials superb skill and craftsmanship and minute quality control inspection, can produce. When ordering arrows be sure to order by stock number, giving weight and length desired. When orders are for unspined arrows, be sure to order by stock number and if special lengths are required, please specify.

The "Galaxie Silver Comet" aluminum arrows are custom aluminum arrows produced and processed in our factory from Alcoa Aluminum 24ST87 that is prepared for us by Aluminum Company of America meeting rigid standards of Alcoa and our specifications. The "Silver Comet" arrow will assure any purchaser that arrow per arrow, identical physical structure will prevail and that arrows will match for spine and weight.

Our choice of cresting and color of feather—add \$2.00 to list if custom work is desired. Standard packages are 1 dozen arrows per carton and 1/2 dozen arrows, per display card.

When ordering Arrows, be sure to specify weight of Bow, Arrow length and type of Hunting point desired, with stock number.

ALUMINUM ARROW AND ALUMINUM SHAFT CHART

Aluminum arrows or shafts to be ordered by bow weight and arrow length desired. Order by the code number from the following chart. Par example: If you want 28" arrows for a 40-45 lb. bow, order #1816 @ 28". Hunting arrows should take the shaft for the next advanced weight.

Bow Weights	23"	24"	25"	26"	27"	28"	29"	30"
18-20					1616	1616	1716	
20-25				1616	1616	1716	1716	
25-30				1616	1616	1716	1716	
30-35			1616	1618	1716	1716	1816	
35-40		1616	1618	1618	1716	1718	1816	1916
40-45		1618	1618	1716	1718	1816	1916	1916
45-50	1618	1618	1718	1718	1816	1818	1916	2016
50-55	1618	1718	1718	1818	1818	1820	1918	2018
55-60		1718	1718	1818	1820	1918	2018	2018
60-65		1718	1818	1820	1820	1920	2018	2018
65-70						1920	2018	2018
70-75							2020	2020

The first two numerals in above shaft sizes indicate outside diameter in 64ths. The second two numerals indicate wall thickness in 1000ths. Examples: No. 1616 is 1/4" diameter x .016 wall; No. 1816 is 9/32" diameter x .016 wall.

ALUMINUM SHAFTS AND POINTS

- A-1100 S—Shafts without points. List \$17.00 per doz.
- A-1100 SP—Shafts cut to length and points installed. List \$19.50 per doz.
- A-1100 ST—Shafts cut to length with standard taper. List \$18.00 per doz.

FINISHED ALUMINUM ARROWS

- A-800 T—Aluminum Target Arrow—Illustrated. Packed 1 doz. per carton List \$29.00 per doz. 1/2 doz. per card \$15.00 per 1/2 doz.

A-800 T

A-800 T4—Aluminum Target Arrow, 4 fletch.—

Not Illustrated
Packed 1 doz. per carton List \$30.00 per doz.
1/2 doz. per card \$15.50 per 1/2 doz.

A-800 F—Aluminum Field Arrow, with removable 5° standard taper field point.—Not Illustrated
Packed 1 doz. per carton List \$30.00 per doz.
1/2 doz. per card \$15.50 per 1/2 doz.

A-800 H—Aluminum Hunting Arrow.—Not Illustrated
Packed 1 doz. per carton List \$33.00 per doz.
1/2 doz. per card \$17.00 per 1/2 doz.

A-810T

"Galaxie" #1 Port Orford Cedar Target, Field or Hunting Arrows. Made of carefully selected Port Orford Cedar shafts, matched in spine and weight, artistically crested, expertly fletched. Packed one dozen per carton—5" fletch—standard length 28" if other length desired please specify. Packed one dozen per carton, 1/2 dozen per card.

A-810T #1 P.O.C.—Target Arrow.—Illustrated
Packed 1 doz. per carton List \$13.95 per doz.
1/2 doz. per card \$ 7.50 per 1/2 doz.

A-810F #1 P.O.C.—Field Arrow.—Not Illustrated
Packed 1 doz. per carton List \$14.25 per doz.
1/2 doz. per card \$ 7.75 per 1/2 doz.

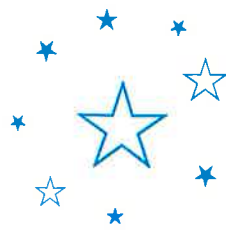
A-810HRIV #1 P.O.C.—Hunting Arrow.—Not Illustrated
Packed 1 doz. per carton List \$17.95 per doz.
1/2 doz. per card with Rocketeer IV point \$ 9.25 per 1/2 doz.

A-810H—with three blade bodkin or hi-precision.

Packed 1 doz. per carton List \$16.95 per doz.
1/2 doz. per card \$ 8.25 per 1/2 doz.

A-810 FH—6 Matched Hunting Arrows and 6 Matched Field Arrows.—Not Illustrated

List \$15.50 per doz.
This item is a must for your stock, packaged 1/2 dozen. field arrows for hunting and 1/2 dozen matched hunting arrows for hunting.



GALAXIE ARROWS



A-820T

The "Galaxie" No. 2 line of arrows have the same specifications as the No. 1 line, except 4" fletch and simpler crest. Packed one dozen per carton, 1/2 dozen per card. Standard length 28"—other lengths, please specify.

A-820F #2 P.O.C.—Field Arrows.—Not Illustrated
Packed 1 doz. per carton List \$11.95 per doz.
1/2 doz. per card \$ 6.25 per 1/2 doz.

A-820H #2 Hunting Arrows.—Not Illustrated
Packed 1 doz. per carton List \$14.95 per doz.
3 blade Hunt. point
1/2 doz. per card \$ 7.75 per 1/2 doz.

A-820T #2 P.O.C.—Target Arrows.—Illustrated
Packed 1 doz. per carton List \$11.95 per doz.
1/2 doz. per card \$ 6.25 per 1/2 doz.

A-820HRIV. #2 Hunting Arrows.—Not Illustrated
Packed 1 doz. per carton List \$15.95 per doz.
Rock IV. Hunt. Pt.
1/2 doz. per card \$ 8.25 per 1/2 doz.



A-830F

The "Galaxie" No. 3 Port Orford Cedar arrows, made from polished straight grained Port Orford Cedar, fully painted, crested, not spined or matched—4" fletch. Recommended as a top grade practice arrow. Packed one dozen per carton and in display racks containing six dozen. Also, packed 1/2 dozen per card. Arrows—standard length 28"—other lengths, please specify.

A-830T P.O.C.—Target Arrow.—Not Illustrated
Packed 1 doz. per carton List \$ 7.95 per doz.
1/2 doz. per card \$ 4.25 per 1/2 doz.

A-830F P.O.C.—Field Arrow.—Illustrated
Packed 1 doz. per carton List \$ 7.95 per doz.
1/2 doz. per card \$ 4.25 per 1/2 doz.

A-830RT P.O.C.—Target Arrow.—Not Illustrated
List 6 doz. display rack \$44.40

A-830RF P.O.C.—Field Arrow.—Not Illustrated
6 doz. display rack \$44.40

A-830H Hunting Arrow, unmatched 2 blade hunting point, packed 1 doz. per carton.—Not Illustrated List \$10.95



A-840 P.O.C.—Special Arrow.

The "Galaxie" Special arrow—carefully made of Port Orford Cedar arrows, matched for spine, fully painted shafts, nocked and beautifully fletched, 5" fletch, no points included. Shafts are full 30" length, points can be added by any archer, resulting in a top grade Port Orford Cedar arrow at a substantial savings. Packed one dozen per carton.

A-840 P.O.C.—Special Arrow.

List \$8.50 per doz.



A-850-T

THE "GALAXIE" #4 ARROW. A practice arrow for beginners, children or as pre-hunting practice, fully painted, crested and 3" fletch, with target or field points. Port Orford Cedar, unspined. Packed in one dozen cartons and in display racks of 6 dozen, 2 dozen 28", 2 dozen 27", 2 dozen 26".

A-850-T	P.O.C. Target Arrows	\$6.50 per doz.	Illustrated
A-850-T	P.O.C. Field Arrows	\$6.50 per doz.	Not Illustrated
A-850-RT	P.O.C. Target Arrows	6 doz. display rack	List \$35.70 per rack
A-850-RF	P.O.C. Field Arrows	6 doz. display rack	List \$35.70 per rack



A-850-RT



A-860

A-860-R—THE "GALAXIE" #5 ARROW. Port Orford Cedar, fully painted, 3" fletch, target point only—children's arrow—packed only in display packs of six dozen. Standard pack 2 doz. 24", 2 doz. 26", 2 doz. 28". List Price \$19.20 per pack



A-860-R



A-870

A-870—THE "GALAXIE" FLU-FLU ARROW. The perfect arrow for shooting at flying targets or birds. Arrow will fly straight for approximately 30 yards then parachute to ground. Made of selected Port Orford Cedar, fully painted, six uncut 4" feathers and blunt points. Packed one dozen to a carton. List \$1.00 ea.—\$12.00 per carton

A-880V—THE "GALAXIE" VACUUM ARROW FOR TOTS. A carded set consisting of three colorful rubber vacuum tipped birch arrows mounted on a colorful, attractive board. List 3 arrows priced \$.60. Packed 24 cards per carton.

A-G—THE "GALAXIE" TOP-FLIGHT GLASS ARROW. The finest glass shafts available anywhere. Tested for durability, straightness and matched for spine and weight. Manufactured in 10 sizes to match all bow weights. The first unidirectional filament wound fiberglass ever produced. Epoxy resin throughout. Available in beautiful white or sandstone color, color throughout shaft. Highly polished surface, ready for crestring and fletching, no preliminary work required.

GALAXIE GLASS ARROWS

The following table is designed for ease of ordering glass shafts and glass arrows, at spine range of 28". Please specify when ordering whether target, field or hunting points are desired. Target points and nock adapters are included with shafts, tapered adapters and nock adapters are included with shafts ordered for field or hunting arrows, field points and hunting points are extra. All inserts must be glued with epoxy cement for best results.

A20—20 to 24 pounds D35—35 to 39 pounds G50—50 to 54 pounds J65—65 to 69 pounds
 B25—24 to 29 pounds E40—40 to 44 pounds H55—55 to 59 pounds
 C30—30 to 34 pounds F45—45 to 49 pounds I 60—60 to 64 pounds

A-890—Glass Shafts, nock inserts and target point inserts or tapered insert. List \$13.95 per doz.

A-891—Glass Shafts, cut to specified sizes, nock inserts and target points installed. List \$15.20 per doz.

A-892—Glass Shafts, cut to size, nock and hunting point insert installed. List \$15.20 per doz.

Use hunting standard tapered inserts and tapered field points for field arrows.

A-893—"Galaxie" Glass Target Arrow, matched in spine and weight, beautifully crested and fletched—none finer. List \$24.00 per doz.

A-894—"Galaxie" Glass Field Arrow, matched in spine and weight, beautifully crested and fletched, with tapered field point. List \$25.00 per doz.

A-895—"Galaxie" Glass Hunting Arrow, matched in spine and weight, beautifully crested and fletched.

3-blade List \$27.00 per doz.
 Rocketeer 4-blade List \$28.00 per doz.

The following table gives complete information for selection of special length arrows, other than 28", with complete table of spine deflection and grain weight of shafts and points.

		24"	25"	36"	27"	28"	29"	30"	31"	32"	Inside Diameter	Outside Diameter	Grains per Inch	Weight Target Point	Weight Nock Insert
A-20	Spine Wt.	40 .650 176	33 .780 185	28 .910 192	23 1.020 200						.234	.271	7.4	54	15
B-25	Spine Wt.	50 .520 202	43 .610 210	37 .710 218	32 .820 227	27 .920 235					.234	.278	8.4	54	15
C-30	Spine Wt.			42 .615 218	39 .700 227	32 .810 235	27 .920 243				.250	.290	8.4	60	16
D-35	Spine Wt.			50 .530 234	43 .610 243	37 .710 252	33 .790 261	30 .870 270	26 .960 279		.250	.293	9	60	16
E-40	Spine Wt.			55 .470 260	48 .540 270	42 .620 280	37 .710 290	33 .790 300	31 .850 310	27 .940 320	.250	.298	10	60	16
F-45	Spine Wt.			60 .430 273	55 .470 284	47 .550 294	43 .610 305	38 .680 315	34 .760 326	31 .840 336	.265	.311	10.5	63	19
G-50	Spine Wt.			67 .385 294	60 .430 305	53 .500 316	48 .530 325	43 .600 339	39 .660 350	35 .740 362	.265	.315	11.3	63	19
H-55	Spine Wt.			73 .360 325	64 .410 337	57 .450 350	52 .500 362	47 .550 375	43 .620 387	38 .670 400	.265	.320	12.5	63	19
I-60															
J-65															

ALL SPINES IN Thousands of an inch deflection when 2 pound weight is placed on center of shaft centered 2 inches shorter than arrow length.

ALL WEIGHTS are in grains, bare shaft only. BOW WEIGHTS at above draw lengths are indicated in boxed squares for size of shaft listed in first column.

Galaxie QUIVERS for WOMEN



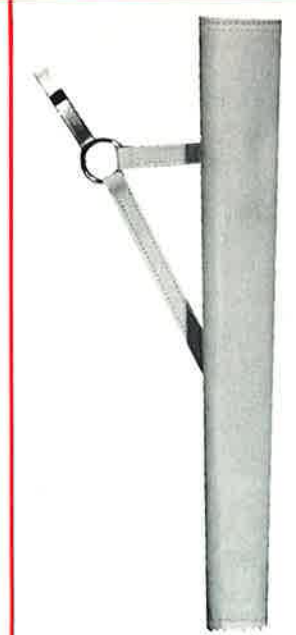
630LW



610W



660W



670W



630LWBR



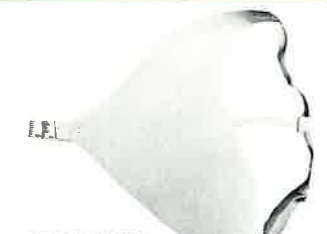
300W



520W



800W



BHP2 1/2

The Galaxie line of exquisitely designed luxurious leather accessories. Recommended for the gentler sex. A line of accessories that will complement any lady archer. Made of top grain selected elk by leather craftsmen. Available in beautiful white, soft dark brown, dark brown, brown and white or black and white, and in rich black.

630LW List \$23.95

A beautiful white shoulder quiver separated into three compartments. Will hold 18 arrows—handy large accessory pocket—zippered at top and side so that contents will not spill when opened—file carrier inside pocket to keep file from rusting—snaps on pocket for licenses—knife sheath on pocket—D-ring at bottom of pocket for a length of rope or other need—pencil holder on breast strap for ease in marking score.

610W List \$9.75
 Exquisite white, two compartment shoulder quiver.

660W List \$4.50
 Beautiful white side quiver with belt.

670W List \$4.50
 Beautiful white side quiver with belt snap.

800W List \$4.50
 An accessories pouch that will fit any belt with top zipper, can be used as purse—a must for all ladies.

630LWBR List \$23.95
 Same specifications as 630LW except brown and white.

630LWBL List \$23.95
 Same specifications as 630LW except black and white.

630L List \$21.50
 Same specifications as 630LW except dark brown.

GALAXIE BLOUSE PROTECTOR
BHP2 1/2 List \$2.50
 Made of top grained white elk. Used by women archers to keep blouse snug against armpit and breast and prevent string slap on loose blouse.

300W List \$1.65
 A beautiful ladies white arm guard, made of top grade white elk—reinforced with spring steel stay—two elastic arm bands.

520W List \$2.25
 A beautiful white ladies shooting glove. Open end finger with elastic band between glove and arm strap, made of white elk—two sizes only, medium and large.

Galaxie QUIVERS for MEN

The tops in high quality, luxury Quivers for the most discriminating archer. Made of top grain selected elk. Available in dark brown, two-tone brown, and rich, luxurious black.

630 List \$23.95
Large three-compartment quiver. Will hold two dozen arrows—hunting, field and target. Large pocket for needed accessories with top and side zipper to insure that accessories will not drop out when opened. File sheath inside pocket, knife sheath and snap hooks on outside of pocket, D ring on bottom of quiver for rope, pencil holder at breast strap, double harness.

630-L List \$21.50
Same specifications as 630 except smaller for ladies and small size men.

625 List \$16.25
Large, two compartment center back quiver, double harness, large pocket with top and side zipper, file sheath, inside pocket, knife sheath, double snap hooks and D-ring on outside of pocket, pencil holder on breast strap.

620 List \$14.75
Beautiful shoulder two-compartment quiver, large pocket with top and side zipper, snap hooks and D-ring on pocket, double harness.

610 List \$8.95
Economic top quality two-compartment shoulder quiver.

600 List \$4.50
A beautiful double utility quiver, can be used as side quiver or shoulder quiver.

610CB List \$9.75
A beautiful center back harness two-compartment quiver.

606 List \$6.25
Holster type quiver designed for the archer. Holds six arrows—large pocket for archery accessories. Made of top grain cowhide. Beaver grained texture.

605 List \$6.75
Side quiver with pocket, made from top genuine cowhide leather. 17" long, with 8" zippered accessory pocket. Metal belt loop. Available in black or two-tone brown.

Galaxie
Your Best Buy



630



630-L



625



620



610



600



610CB



606



605

QUIVERS

Galaxie's superb line of medium priced Quivers. Manufactured of the finest split cowhide leather available. Two tone brown or rich satin black. A must for your stock.



630-S



630-LS



625-S



620-S



610-SCB



600-S



610-S



670-S



660-S



885



PQ-150

630-S List \$15.45
Economically priced handsome quiver. Same specifications as 630 except made of genuine split grain leather.

630-LS List \$13.50
Same specifications as 630-L except made of genuine split grain leather.

625-S List \$12.45
Same specifications as 625 except made of genuine split grain leather.

620-S List \$11.25
Same specifications as 620 except made of genuine split grain leather.

610-SCB List \$7.95
Same specifications as 610CB except made of genuine split grain leather.

610-S List \$7.50
Same specifications as 610 except made of genuine split grain leather.

600-S List \$3.95
Same specifications as 600 except made of genuine split grain leather.

670-S List \$3.00
An economical genuine split grained leather side quiver with metal snap loop for any belt.

660-S List \$3.00
An economical genuine split grained leather side quiver with belt.

885 List \$2.25
Handy accessory arrabuk belt pouch, zipper opened.

PQ-150 List \$1.50
Hip pocket quiver made of genuine split grained leather.

PQ-300 (Not Illustrated) List \$2.95
Pocket quiver with accessory pocket. Made of top grain cowhide.

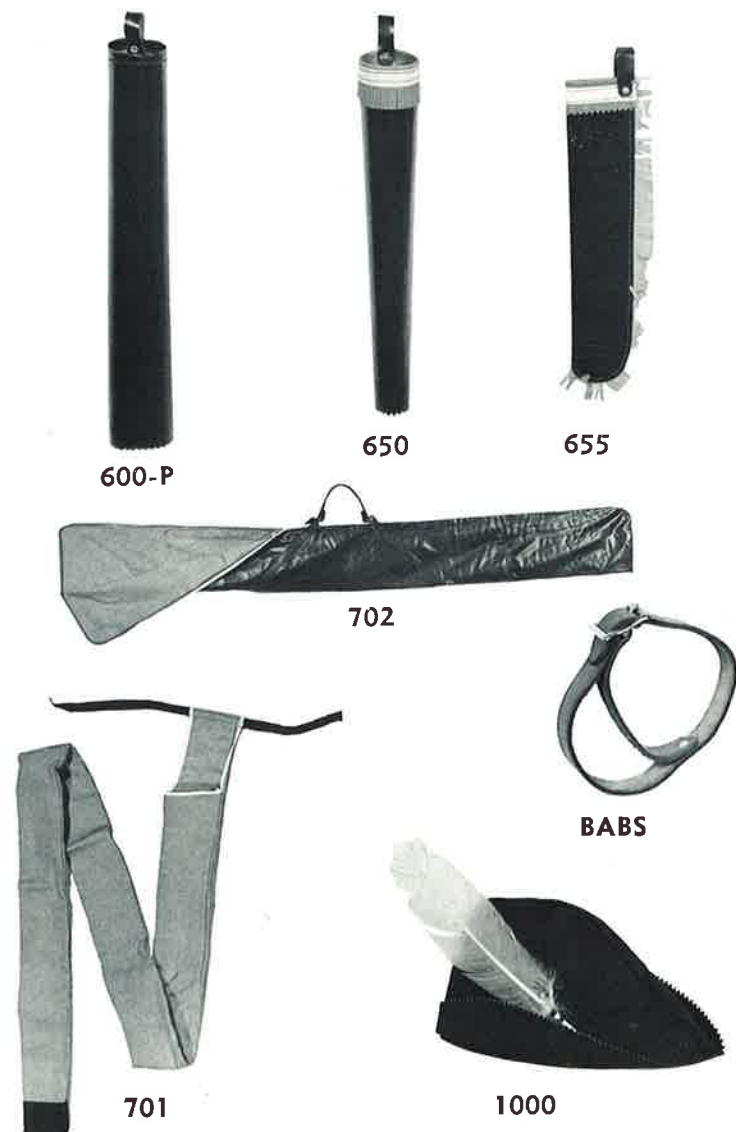
QUIVERS



The finest of low priced Quivers, made of top quality vinyl supported vulcanized fiber, in rich glossy black, trimmed in beautiful contrasting white, creating a very rich looking durable quiver that any archer would be proud to own, but at a price that any archer can afford. Loads of eye appeal.



- 630 L.P.—Quiver** List \$7.95
Same specifications as Galaxie's deluxe 630L, except made of our new rich vinyl supported material in rich glossy black, cannot be compared at this low, low price. Three compartments to hold your full assortment of arrows.
- 610 P.C.B.—Quiver** List \$6.95
A beautiful economical full sized center back quiver, made of rich black vinyl supported material, two compartments for your convenience, trimmed in genuine leather, double harness, for comfortable non-slip wearing, equipped with full size, zipper fastened, accessory pocket.
- 685—Quiver** List \$5.95
A beautiful vinyl supported, two compartment shoulder quiver, with large zipper fastened, accessory compartment.
- 684—Quiver** List \$4.25
An ideal medium sized vinyl supported, two compartment shoulder quiver.
- 683—Quiver** List \$3.50
Medium sized single compartment belt quiver, made of durable vinyl supported material.
- 682—Quiver** List \$2.75
Small sized, single compartment quiver, made of vinyl supported material. Ideal for children.
- 600-P—Quiver** List \$1.75
An ideal, rich vinyl supported belt quiver that will hold at least six arrows.
- 650—Quiver** List \$1.25
An ideal child's belt quiver made of vinyl supported material, richly trimmed.
- 655—Quiver** List \$.75
Small child's belt quiver, durable, good looking, made of vinyl supported material.
- 700—Not Illustrated** List \$1.75
Beautiful canton flannel bow case. Leather trimmed with leather ties. Available in 62", 66" and 72". Width of case will fit most bows.
- 701—Illustrated** List \$2.25
Same specifications as #700 except width will accommodate modern tournament bows. Available in two lengths: 66" and 72".
- 702—Illustrated** List \$9.50
The "Galaxie" new tournament bow case, a deluxe case that will fit all tournament bows. Made of weather proof vinyl, flannel lined, with inside pocket for accessories, 36" zipper, center leather grip.
- BABS—Illustrated** List \$1.75
Galaxie ankle bow stringer—easily applied, leather looped, straps to ankle makes bracing of any recurve bow simple and guarantees not to twist recurves or injure bow. Lengthen the life of your bow—easily carried in quiver.
- 1000—Illustrated** List \$3.45
The "Galaxie" archer's hat—made of very soft suede leather, sporting a colorful width turkey feather. Fits any head, lasts forever. Available in red or green suede.
- 1001—Not Illustrated** List \$1.00
White expanded plastic foam archer's hat, keep your head cool in the summer, warm in the winter, greatest insulation value. Beautiful.



Galaxie

GLOVES • TABS • ARM BANDS

Galaxie manufactures archery gloves and tabs to meet any archer's requirements. Made of finest glove leather—designed to fit comfortably eliminating sore spots on fingers. A must for archers. All Galaxie gloves come in the following sizes: For men—extra large, large, medium and small. For women—medium and large.



- 530**—Made of finest glove leather. Closed cordovan tips, elastic insert between glove and wrist tie. List \$2.25
- 520**—Made of finest glove leather. Open cordovan tips, elastic insert between glove and wrist tie. List \$2.00
- 530-K**—Same specifications as 530 except tips are soft cowhide. List \$2.00
- 510**—Soft fine glove leather and wrist tie. Cordovan open tips. List \$1.65
- 510-K**—Same specifications as 510. Tips soft cowhide. List \$1.25
- 520-S**—Single seam glove. Same specifications as 520 except fingers have single seam in back. List \$2.00
- 550**—Finest cordovan finger tabs available. Large and small only. List \$.45
- 551**—Soft cowhide finger tabs. Large and small only. List \$.25
- GALAXIE ARM GUARDS**
Galaxie manufactures the most complete line of arm guards to fit any archer's needs, regardless of size and type of shooting.
- 320-B**—Large, beautifully designed, extra wide hunting guard with one inch wide spring steel stays. Three leather arm straps. List \$3.00
- 320**—Same specifications as 320-B except three elastic bands instead of leather straps. List \$2.75
- 310**—Full length, wide arm guard, with one inch spring steel stay, two elastic buckled straps. Provides maximum protection. List \$2.00
- 300**—Semi-narrow tapered design with steel stay, cordovan, provides coolness yet affords full protection. Two elastic arm bands. List \$1.50
- 301**—Same as 300, except made of kip leather. List \$1.25
- 305**—Full length cordovan arm guard, extremely narrow, two elastic straps. List \$1.35
- 300-S**—Extremely short arm guard 4 1/4" long, two elastic straps. List \$1.35
- 300-K**—Leather guard. Arrabuk lined elastic bands, excellent for children. List \$.75
- 350**—Split leather arm guard for children. List \$.50
- 325**—New armguard in the "Galaxie" line of archery leather goods. Wide cordovan type leather, with steel stays, gives full forearm protection with added sewn length. Can be shortened, if desired, by trimming along seams. Three elastic bands. List \$3.50

All arm guards available in white, brown or black.

GALAXIE Archery Equipment



KWENCHERS

A beautiful plastic canteen, made of pliable plastic, dent proof, noiseless, complete with screw cap and belt clip as shown. Easy to carry and a must for every archer. Indispensable in field, target or hunting and fishing trips. Actually three-way canteens—can be filled with liquid, pre-frozen in your freezer, then used as a cooling device to keep other items refrigerated in your picnic or camping chest. Can be filled with hot beverages and will stay warm for hours. Can be used as a hot water bottle. Indeed, a must for every outdoorsman, every household. Available in forest green.

List Price \$1.98 each

GALAXIE® SLING SHOT

A beautiful hunting sling-shot. Hits with the power of a rifle. An ideal, inexpensive weapon for hunting small game such as rabbits and squirrels, or to dispose of vermin. Packed and loaded with excitement and thrills, a must for added gameroom thrills. Sling-shot has reservoir in handle for storage of shot. Pellets released by twisting knob at bottom of handle.

Sling-shot Assembly—packed on red card in plastic container, fully assembled and loaded.

List Price \$1.50 each

Rubber Assembly—two rubbers and pouch assembled. List Price \$0.25 each

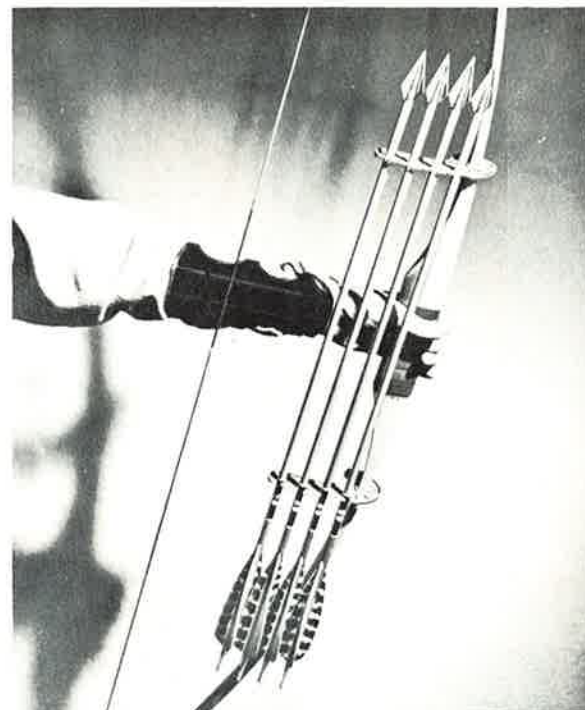
Sling-shot Rubbers

List Price \$0.15 pair, \$0.10 each

Pellets List Price \$0.15 pkg. of 40 shot



NEW ADDITIONS FOR THE OUTDOORSMAN HUSH - H - H® BOW QUIVER



6th YEAR of proven performance

List Price, \$2.95 pair

When you flip an arrow out, it falls into place on the arrow rest.

- Holds four arrows on any bow.
- No screws, clamps or tape.
- Weighs only 1 1/4 oz. per pair.
- Holds any shaft diameter from 9/32" to 11/32".
- For right or left handed archers.

BHMD-80—List Price, \$80.00

A complete, easy-to-display, wire rack merchandiser.

Each rack contains—

12 packages 5/16 Nocks (12 to pkg.).....List \$0.45 per pack

12 packages 11/32 Nocks (12 to pkg.).....List \$0.45 per pack

12 packages 5/16 I.D.—11/32 O.D. Target Points (12 to pkg.)...List \$0.60 per pack

12 packages 11/32 I.D.—3/8 O.D. Target Points (12 to pkg.)...List \$0.60 per pack

12 packages 5/16 I.D.—11/32 O.D. Field Points (12 to pkg.)...List \$0.75 per pack

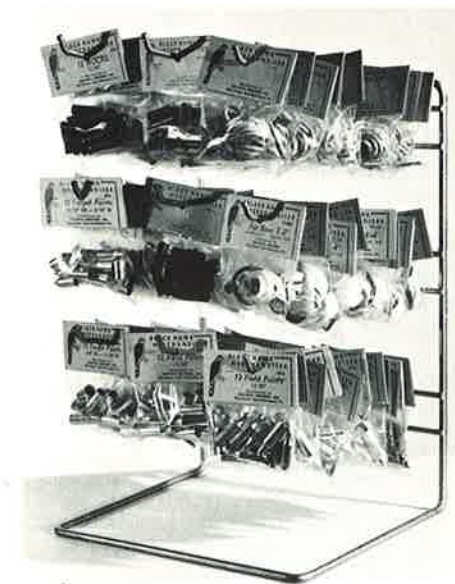
12 packages 11/32 I.D.—3/8 O.D. Field Points (12 to pkg.)...List \$0.75 per pack

12 packages Assorted Kid's Bow Strings (1 to pkg.).....List \$0.35 per pack

12 packages Assorted Dacron Bow Strings (1 to pkg.).....List \$1.35 per pack

12 packages Famous Rocketeer IV Broadhead (3 to pkg.)...List \$1.50 per pack

The above items are packed in easy-to-see clear plastic packages.



BHMD-80

WIRE DISPLAY RACK only, List Price, \$2.95

A durable assembled rack that can have many uses, for sporting and hardware dealers, can be used to display items for the impulse buyer, for the home workshop, can be used to hold assorted nails, screws, nuts and bolts; easily accessible with a minimum amount of space—9 3/4" square base, 13 1/2" high, contains nine arms 8" in length.

GALAXIE ARCHERY ACCESSORIES

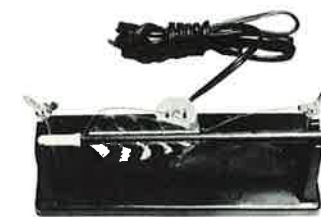
DO IT YOURSELF



Server.



Tapering Tool.



Feather Burner.



Bow Sight.



Identification Decals



Brush Buttons



Ground Quiver.



Leather Rewrapping

SS3—Galaxie Server. Finest server for serving bow strings on the market. Made of tough durable plastic. Easy to use, simple adjustments for positive serving. (Directions with each server.) List Price \$2.95

Serving Spools, extra large spools. Available in red, green, rust. List Price \$0.60 per spool

BHTT4—Famous Galaxie Tapering Tool. This tool, acclaimed by all as the finest tapering tool on the market, designed to fit all points and nocks. Included are four bushings which have tapered sleeves that fit in a tapered hole of the main tool. Bushings are 1/4" 9/32", 5/16" and 11/32" and are slightly oversized to permit clearance of oversized shafts or painted shafts. Blade for cutting is a used injector-type razor blade, available at any drug store. (Directions and descriptive literature with each tool.) Complete tool containing six parts. List Price \$3.50

BHB4—Galaxie Feather Burner. A burner designed for the home craftsman and for home repairs. Comes completely assembled. Completely safe. Does not have transformer. In place of transformer, plug in an electric iron or other appliance in plug shown in base. This will reduce current to the burning wire. Will not work unless appliance is plugged in receptacle. List Price \$4.95

BHB1—Galaxie Bow Sight. Tops in bow sights. Has elevation and windage adjustment set screw. Three different types of apertures. Available in individual sets with directions for use. Each set consists of five pieces. Made of tough plastic. Colors—red, green or yellow. Easily attached to bow with tape. List Price \$1.50 per set

Galaxie Identification Decals—12 decals per sheet. Decals are numbered 1 to 12 inclusive with lines for name and address. An easy device for identifying your arrows, with numbers to identify your shots. Available in five different colors—white, yellow, pink, blue, and green. Very easy to apply. List Price \$0.30 per sheet of 12

Galaxie Brush Buttons—For brush proofing bow when stalking in woods and dampening string noise. Fit all bows. Packed in blister bags; packed 12 packs to easel. (See merchandiser section of catalog.) Comes in two sizes. Standard—List Price \$0.60 pair Super—List Price \$0.70 pair

G. Q.—Galaxie Ground Quiver. Tops in ground quivers with many features not found in even more expensive quivers. Made of cadmium-plated steel, spring loop for holding arrows, metal clip for holding bow, cigarette holder and score card holder. List Price \$3.30

LRW—Galaxie Leather Rewrapping for bow handles. Made from genuine soft beautiful tanned leather. Completely skived for ease of application and form fitting of hand. List Price \$1.00 each

BHSH—Galaxie String Holder. Made of genuine leather with elastic band and clip to hold string on to your bow. End slips on bow, elastic band and clip allows string to be held tight without danger of losing. (Not illustrated.) List Price \$0.75 each

★ GALAXIE ARCHERY ACCESSORIES ★

CATA—Galaxie Camouflage Bow Tape. A completely camouflage designed bow tape with pressure adhesive backing for ease of application on all bows; easily removed when not in use. Ideal for quick camouflaging of bows during hunting. (Directions with each roll.)

List Price **\$1.00** each roll



Camouflage Bow Tape.

Galaxie Tassel—For wiping and cleaning arrows, preserves arrows, keep quiver clean, suspends from quiver. Made of virgin wool yarn. Assorted colors.

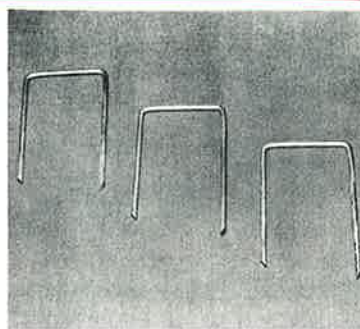
List Price **\$1.00** each



Tassel

STAP—Galaxie Target Staples. Wire staples for fastening target faces to straw mats (four to set).

List Price **\$.35** per set



Target Staples.

Galaxie Bow String—Dacron bowstrings pre-stretched and pre-waxed in increments of 1/2" from 48" to 72" long—increments of 10 pounds from 20 pounds up. Single loop 72" Dacron slip. List **\$1.35** each

Childrens Strings—Made of finest Italian Hemp. Sizes 4'-0" to 4'-6", 5'-0" to 5'-6", 5'-6" to 6'-0". (Not Illustrated) List **\$.35**

AC6—Galaxie Arrow Clips. Metal arrow clips with wood screws for display racks and racks for arrows. (Packed 144 to carton)

List Price **\$5.70** per carton



Arrow Clips.

Dacron Spools—4 oz. Finest dacron available for the manufacturing of bow strings.

D-138—light weight, 4 oz. spool List **\$3.00**
D-207—heavy weight 4 oz. spool List **\$2.75**



Dacron Spools

Galaxie Fletching Cement—Type M for metal shafts. Type W for wood shafts. Tops in fletching cement, unexcelled for glueing feathers and nocks to shafts for the making of arrows (12 to carton).

List Price **\$4.20** per carton, **\$.35** per tube



Fletching Cement

Galaxie Bow String Wax—Our own formulated wax. Made from pure beeswax and other ingredients. Unexcelled for synthetic and linen bow strings. (12 cakes to carton)

List Price **\$.35** per cake, **\$4.20** per carton



Bow String Wax

Galaxie Ferrule Cement—Tops in hot melt adhesive. Unexcelled for application of points on arrows and for fishing tackle. 12 sticks to carton.

List Price **\$4.20** per carton, **\$.35** per stick



Ferrule Cement

Galaxie Waterproofing (Aerosol)—Spray dispenser waterproofing for arrows, for fisherman's flies. The finest arrow waterproofing available. Easy to use, economical—just press button, direct to feathers and a fine mist positively waterproofs your arrow. Packed 1 doz. cans to carton.

List Price **\$1.25** per can, **\$14.00** per carton



Waterproofing (Aerosol)

GALAXIE ARCHERY ACCESSORIES

G-K1 DE LUXE KWIKEE KWIVER

Pat. No. 2,954,764

- NEW Open End Construction. Eliminates Cutting of Fitting!
- Spring steel clamp is permanently installed. **NO RUBBER BANDS TO BREAK, DETERIORATE OR BECOME LOST IN THE FIELD.**
- Non-skid surfaces give bulldog grip on bow limbs.
- DuPont Neoprene Rubber Cores. Will not turn brittle with exposure to ultra-violet rays as natural rubber imitations do.
- Newly designed arrow holes gives 50% greater gripping power, but permit easy removal.
- Super Hi-Impact "CYCOLAC" reinforcement plates prevent warping or twisting.
- LIGHTWEIGHT - STREAMLINED. Compact and good looking on the bow. Brown and Gold Autumn camouflage Coloring. G-K1. Packed one half dozen in counter display carton. Retail Price, **\$3.50** per pair.



SNIP-SNAP!
on or off the bow
in less than 5 seconds

G-K2 STANDARD KWIKEE KWIVER

Slip-on type installs over end of bow limbs. Same quality materials and construction as DeLuxe Model. Clings tightly to bow limb. Will never work loose or slide out of place. Will not warp or twist out of shape. Fits all bows. Mounts in or out, right or left handed. Brown and Gold Autumn camouflage coloring.

G-K2. Packed 1/2 dozen pairs in attractive counter display carton. Retail Price, **\$2.95** per pair.



G-KK—KWIKEE KOVER BROADHEAD SHIELD



Molded from tough, super high impact Cycloc thermo setting plastic. Featherweight. Attaches to spare arrow in any model KWIKEE KWIVER. New stabilizer bar on stem prevents twisting on arrow. Protects person and material from contact with sharp broadheads. Prevents edge from becoming dulled. Does not interfere with shooting or function of quiver.

G-KK. Packed individually in attractive box. Retail Price, **\$1.50** each.

G-KS—KWIKEE SILENCER BOWSTRING ATTACHMENT



Dampens bowstring noise by deadening vibration nodes at points where they develop in the string. Deer will not flinch or "duck" at sound of string "twang." Will not locate hunter from sound.

G-KS. Packed one dozen pairs in plastic bags on attractive counter display card. Retail Price, **\$.90** pr.

GALAXIE ARCHERY ACCESSORIES

TARGET FACES

STANDARD 4-COLOR FACES

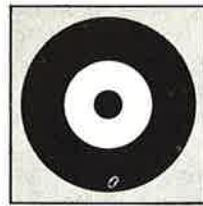
Made of heavy Tag paper. Sizes 12" through 40"—all 48" are N.A.A. OFFICIAL



Code	Size	List Price
P-48	48"	\$1.69
P-36	36"	\$.95
P-24	24"	\$.50
P-16	16"	\$.20
P-12	12"	\$.15

OFFICIAL INDOOR FLINT

Heavy Tag

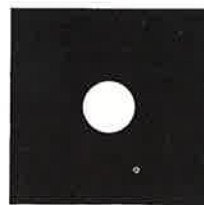


Code	Size	List Price	Set Inc.
B-24	24"	\$.20 ea.	4
B-18	18"	\$.15 ea.	6
B-12	12"	\$.10 ea.	8
B-6	6"	\$.04 ea.	18

Set of 36-B36—\$3.20

OFFICIAL NFAA BLACK HUNTER

Heavy Tag



Code	Sheet Size	Score Area	List Price	Set Inc.
H-24	25"	24"	\$.45 ea.	3
H-18	25"	18"	\$.45 ea.	5
H-122	25"	12"	\$.45 ea.	1
H-12	13"	12"	\$.15 ea.	4
H-6	7"	6"	\$.05 ea.	5

Set of 18 List Price \$4.95

OFFICIAL ANIMAL ROUND

Broodhead



Code	Size	List Price	Set Inc.
OAR1	40 x 28	\$.70 ea.	3
OAR2	28 x 22	\$.40 ea.	3
OAR3	22 x 14	\$.30 ea.	4
OAR4	14 x 11	\$.15 ea.	8

40 x 28 Bear or Moose Set of 18 FACES \$5.95
 28 x 22 Antelope, Mt. Lion or Ram
 22 x 14 Raccoon, etc.
 10 x 11 Pheasant or etc.

OFFICIAL PAA INDOOR ROUND

Heavy Tag

16"	PCR16	\$.15 ea.
-----	-------	-----------

FULL COLOR ANIMAL FACES

meets all regulations.



Code	Size	Animal	List Price
CA-24	24"	Deer or Mt. Lion	\$.50
CA-18	18"	Fox or Turkey	\$.30
CA-12	12"	Pheasant or Bobcat	\$.20
CA-6	6"	Squirrel or Blue Jay	\$.07

Set of 36 FACES
 CA-36—\$6.50

Set includes 4 at 24", 6 at 18",
 8 at 12", 18 at 6"

CORRUGATED FLINT

Code	Size	List Price
CB24	24"	\$.30 ea.
CB18	18"	\$.20 ea.
CB12	12"	\$.15 ea.
CB6	6"	\$.08 ea.

CORRUGATED BLACK HUNTER

Code	Score Area	List Price
CH-24	24"	\$.60 ea.
CH-18	18"	\$.60 ea.
CH-122	12"	\$.60 ea.
CH-12	12"	\$.20 ea.
CH-6	6"	\$.10 ea.

Set of 18 List Price \$6.70

CORRUGATED CHICAGO ROUND



Four color, 5 ring 16" face.
 Hair line registration.

C16—16" List Price \$.39

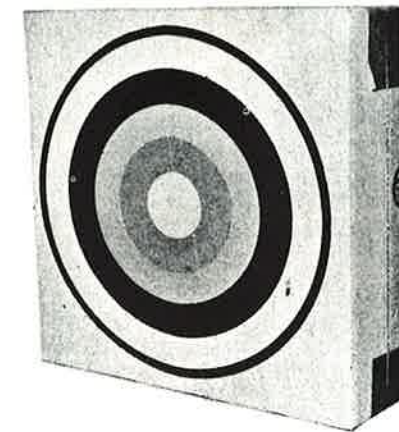
GALAXIE TARGET MATS

Saunders Mats are spiral wound, made of tough, Spartana Indian Cord Grass, chemically toughened, with Saunder's exclusive end-grain center section.

Code	Size	Weight	List
48	48"	70 lbs.	\$25.00
36	36"	50 lbs.	\$14.95
30	30"	30 lbs.	\$11.00
24	24"	20 lbs.	\$ 7.95
16	16"	10 lbs.	\$ 4.25



100 pounds rail shipments are freight prepaid your city. Delivery charges in areas not served by free delivery serves are *not* covered by this freight policy. Customers specifying truck on order of 100 pounds or more will receive a freight allowance of \$4.50 per hundred weight against the truck charge.



BEC—ECONOMY TARGET MAT

Made of Heavy Corrugated Paper

16" Score Area

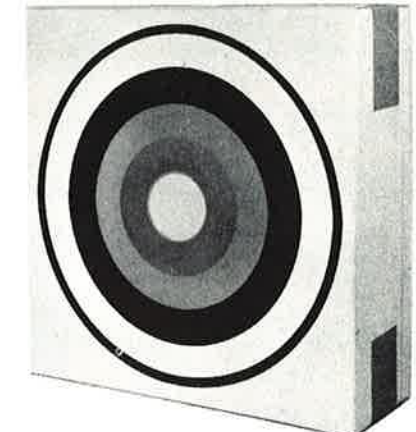
Made of heavy corrugated paper, comes partially assembled, can be assembled by opening the box, pack tightly with rags or straw, then tape box lid shut. An economical target mat that will give many hours of pleasure.
 Packed 15 BEC to Bundle

List \$1.00 each

BEC-F—16" TARGET MAT

Fully assembled economy target mat filled with Galaxie Chemfoam Arrow Stopper; will stop arrows from bows to 75 pound weight. Feather-light, easily carried.
 Packed 12 Target Mats to Bundle

List \$3.50



B.T.M.-24—LIGHT WEIGHT COMPLETE TARGET MAT

Galaxie's latest in superior Target Mats. A real arrow stopper—will stop arrows shot from 80-pound bows. Feather-light in weight, strong, durable; made of heavy corrugated board, snobute finish, 4-color face, filled with Galaxie's Chemfoam Arrow Stopper. Size 24" x 24" x 4".
 Packed 6 to Bundle

List \$6.00 each

B.W.S.—WOOD TARGET STAND

Galaxie's Tripod Wood Stand for easy target mounting. Easily assembled.

List \$6.95

Galaxie SAUNDER'S BOW SIGHTS

NEW SIGHT 'N LEVEL

Here's the Bow Sight archers have waited for... precise... accurate... simple... rugged... feather weight... plus a Level that detects even the slightest amount of cant. Once Sight is zeroed in for any distance, elevation calibrations are correct for any range. **MASTER CORRECTOR**—if bowstring or arrow fletchings are changed, or temperature varies widely, reset Sight for any single distance and the Master Corrector adjusts all distances automatically.

Look at these features:

- Spring-loaded elevation adjustment with positive lock set-screw.
- Fine threaded windage adjustment with positive lock set-screw.
- Reversible hood for left- or right-handed shooters.
- Simple as a band-aid to attach... merely strip off backing and press on (no screws).

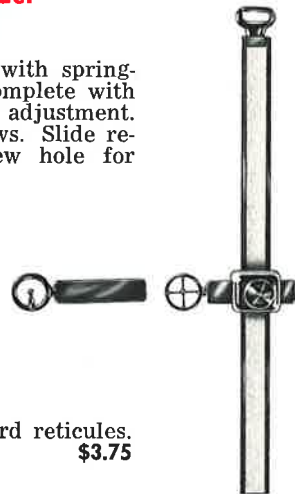
Saunders SIGHT 'N LEVEL has been tested and approved by a board of expert archer consultants.

No. SSL—Complete Sight and Level in individual box. **\$9.95**
No. SS—Sight only, without Level, in individual box. **\$8.98**



New Economy Model JOSEY SITE

An excellent low-priced sight with spring-loaded elevation adjustment complete with set-screw. Slide-bar windage adjustment. Reversible for left or right bows. Slide recessed for tape. Oblong screw hole for squaring adjustment.



No. JS—Josey Site with standard reticules. **\$3.75**

SAUNDER'S LEVEL HOOD

Fits any 5/8" bow sight hood

No. SL—Level only. **\$0.98**

Stops Small Game Cold... Minimizes Arrow Damage!

BLUDGEON

BLUNT ARROWHEAD for Rabbits, Squirrels, Birds and other small game

A Saunders exclusive—a killing head that minimizes arrow shaft breakage. On hitting rock or tree, point "gives" and glances off, leaving shaft undamaged. Made of temperature compensated rubbery plastic... won't get brittle in the coldest weather. Tremendous impact of 6-pointed, 7/8" head kills small game instantly by shock. Fits 5/16" or 11/32" shaft. Bright red color makes hunting arrows easier to find.

No. NB10—Bag of 10 Bludgeons. **\$1.98**



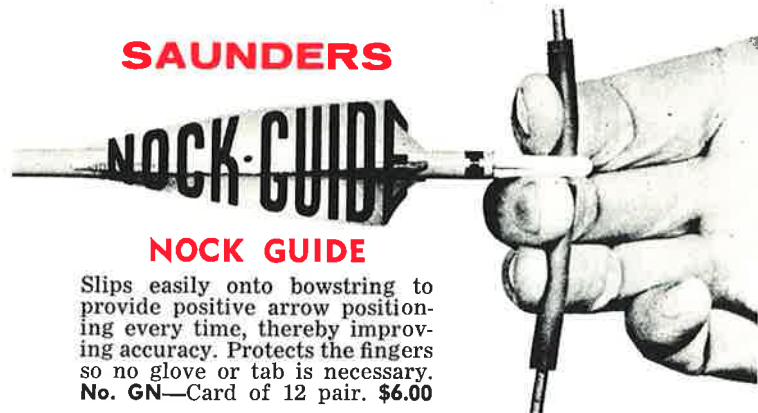
New—Simpler easier-to-use BOW SQUARE

Improves accuracy from the first shot! Tells you height between bow and bowstring—locates proper nocking point on the string. It's the right tool for the job. Sturdy, lightweight aluminum, anodized to prevent reflections—no moving parts... and only **\$2.95**



The **RIGHT TOOL** to help you sell bows. Serious archers will want their own once you've demonstrated it. **No. BOS-6**—Pack of 6 on individual cards. **\$17.70**

SAUNDERS NOCK GUIDE



NOCK GUIDE

Slips easily onto bowstring to provide positive arrow positioning every time, thereby improving accuracy. Protects the fingers so no glove or tab is necessary. **No. GN**—Card of 12 pair. **\$6.00**

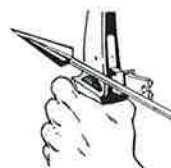
NEW SAUNDERS Kwik-lok

HOLDS ARROW IN BOW—RELEASES INSTANTLY ON THE DRAW!

A sensational development. Holds arrow in nocked position while bow is carried, when bow is laid down, while waiting to shoot. When arrow is drawn, springs back out of the way—cannot affect arrow flight. Easy to apply. Pressure sensitive surface so Kwik-lok will not mar bow.

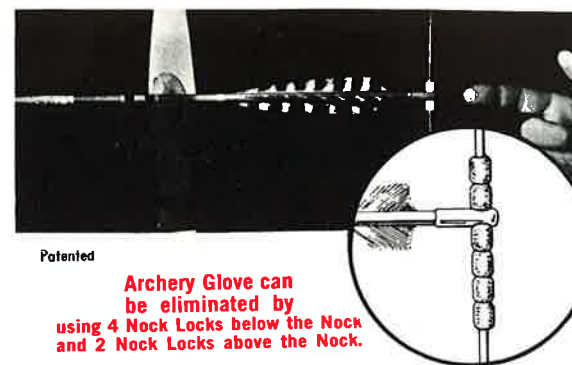
Individually carded—**ONLY \$1.49**

No. KLL-12—Pack of 12 for arrows 5/16" or larger. **\$11.76**



Galaxie Archery Accessories and Raw Materials

ARROW NOCK LOCKS

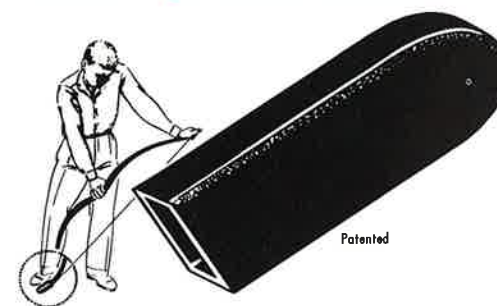


Archery Glove can be eliminated by using 4 Nock Locks below the Nock and 2 Nock Locks above the Nock.

Always ready to shoot... arrow nocked instantly—stays nocked. Holds firmly at any desired position by using 4 nock locks below arrow nock and 2 above—glove or tab may be eliminated.

List **\$0.50** per pair

BOW TIP PROTECTOR



Protects bow while stringing—holds string in place—keeps bow tip in new condition—fits all bows—made of soft pliable rubber.

List **\$0.50** ea.

PORT ORFORD CEDAR ARROW SHAFTS

Select #1 stock—highly polished.

List Price **\$3.00** per doz., **\$22.00** per 100

Shafts matched for spine.

Shafts 30" length, colored—3 coats of paint **\$3.50** per doz.

Shafts with nocks attached—3 coats of paint **\$4.00** per doz.

Our choice of color on nocks, colors available for shafts—red, white, yellow and green.

FEATHERS

Top quality turkey feather for arrows.

List Price—

Grey-barred feathers **\$0.60** per doz., **\$3.25** per 100

Dyed barred feathers **\$0.70** per doz., **\$3.50** per 100

Natural white feathers **\$0.90** per doz., **\$4.35** per 100

Dyed white feathers **\$1.00** per doz., **\$5.00** per 100

Packed in dozen lots or 100 lots—specify wing and color.

Colors—red, white, green, blue, orange and yellow.

ARROW MAKING MATERIAL

NOCKS

Made of finest plastic available, designed to eliminate finger pinch. Indexed for ease of nocking correctly. Available in five colors—white, yellow, red, green and black.

List Price—

\$0.40 per doz.

\$2.00 per 100—one color—one size.

\$15.00 per 1000—quantities 1000 to 5000—one size and color per M.

\$14.00 per 1000—quantities 5000 to 10,000—one size and color per M.

Special prices quoted on request for large users.

TARGET POINTS

Made of finest steel, cadmium plated.

11/32 I.D.—3/8 O.D. 60 grain

5/16 I.D.—11/32 O.D. 45 grain

9/32 I.D.—5/16 O.D. 30 grain

1/4 I.D.—9/32 O.D. 30 grain

List Price—

\$0.60 per doz., **\$4.75** per 100 1 size, **\$45.00** per 1000 1 size



FIELD PARALLEL POINTS

Made of finest steel, cadmium plated.

11/32 I.D.—3/8 O.D. 125 grain

5/16 I.D.—11/32 O.D. 100 grain

9/32 I.D.—5/16 O.D. 75 grain

1/4 I.D.—9/32 O.D. 60 grain

List Price—

\$0.75 per doz., **\$5.50** per 100 1 size, **\$50.00** per 1000 1 size



GALAXIE POINTS FOR ALUMINUM ARROWS

Made of all steel, cadmium plated, knurled for snug fit—no movement.

List Price—

\$1.25 per doz., **\$7.00** per 100 1 size, **\$60.00** per 1000 1 size



Galaxie Standard Tapered FIELD POINTS

Made of finest steel, cadmium plated.

11/32 I.D.—3/8 O.D. Approx. 125 grain

5/16 I.D.—11/32 O.D. Approx. 100 grain

9/32 I.D.—5/16 O.D. Approx. 75 grain

1/4 I.D.—9/32 O.D. Approx. 60 grain

List Price—

\$0.85 per doz., **\$6.00** per 100 1 size, **\$57.00** per 1000 1 size



GALAXIE STANDARD TAPERED BLUNT POINTS

Made of finest steel, cadmium plated.

11/32 I.D.—3/8 O.D. Approx. 125 grain

5/16 I.D.—11/32 O.D. Approx. 100 grain

9/32 I.D.—5/16 O.D. Approx. 75 grain

1/4 I.D.—9/32 O.D. Approx. 60 grain

List Price—

\$0.85 per doz., **\$6.00** per 100 1 size, **\$57.00** per 1000 1 size

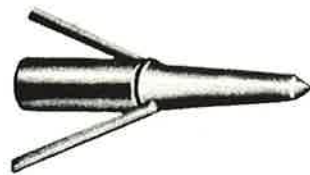
GALAXIE ARCHERY ACCESSORIES



Galaxie Bow Nock

Made of virgin nylon. For new bows or for repairs. Hole size 1/2" x 3/16" x 1".

List \$1.00 per pair



(FP1)—Galaxie Fish Point

Made of finest steel, head is in three (3) parts—steel ferrule, head and barb. Head screws on to ferrule for easy removal of arrow after shooting fish. Ferrule available to fit shafts 5/16" and 11/32". Head fits on all ferrules. Cadmium plated.

List \$.50 per point

Cold Formed Steel Points

Brass plated. Bullet shaped. Size 1/16" I.D. x 7/8".
\$.20 per doz.—\$2.00 per 100—\$12.00 per 1000

Field Points

Cold formed steel-nickel plated. Size 11/32" I.D. only.
\$.50 per doz.—\$4.00 per 100—\$24.00 per 1000

Famous Gudebrod Dacron G-bow String Material

Pre-stretched, pre-waxed, 38 pounds per strand—500 yard spools, white.

List Price \$5.00 per spool

Rubber Suction Cup— Vacuum Points

For rebuilding old arrows into safe children's arrows or for new children's arrows.

List \$.35 per doz.



High Precision Hunting Point

Three-blade, one-piece welded. Available in two sizes—5/16" @ 100 grain, 11/32" @ 125 grain.

List \$3.75 per doz.



2-Blade Arrowmate

Blade 3" long, razor edged. Edges curved for deeper cutting action. Spring steel—tough plastic ferrule. Sizes 5/16" and 11/32".

List \$3.75 per doz.



Bodkin—3-Blade Points

Available in two sizes—5/16" @ 100 grain, 11/32" @ 125 grain.

List \$3.75 per doz.



4-Blade Arrowmate

Main blade 3" long, razor sharp edges—tough plastic ferrules. Spring steel—four cutting edges. Sizes 5/16" and 11/32".

List \$4.50 per doz.



MA3—3-Blade Points

Available in 5/16" @ 100 grain, 11/32" @ 115 grain.

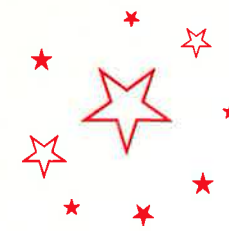
List \$3.75 per doz.



3-Blade Arrowmate

Razor sharp—powerful penetration—non-curl point—micro molded ferrule. A powerful, rugged, beautiful point. Sizes 5/16" and 11/32".

List \$4.95 per doz.



Galaxie Rocketeer IV

The finest, most versatile Hunting Point on the market. Absolutely will not plane, either as a two-blade or four-blade point. Its design and factory sharpness insures complete penetration whether bone or muscle and complete bleeding.

Available fully assembled as a 4-blade hunting head, or as a 2-blade hunting head. Parts can be purchased separately. Designed so that it can come apart, it will save arrows. If an arrow burries its point into a tree, pry large blade from ferrule, insert another blade and you have only lost a small portion of the head, not the arrow. Insures deadly penetration, free bleeding, no planing, no broken or lost arrows, no lost time.

Galaxie ROCKETEER HUNTING POINTS are made of the finest spring steel available—tempered to the right hardness—factory sharpened. Ferrules are made of ZYTEL® NYLON Resin—will withstand a lot of punishment.



Rocketeer IV
4-blade - assembled
List
\$5.95 per doz.

Rocketeer II
2-blade - assembled
List
\$4.50 per doz.

Main Blade
List
\$3.30 per doz.

Auxiliary Blade
List
\$1.45 per doz.

Nylon Ferrules
List
\$1.20 per doz.

Rocketeer Hunting Points and Parts available in merchandiser easels (see merchandiser page) in different combinations, or available in single dozen orders packed in beautiful blister packages.

INDEX - GALAXIE CATALOG A

	Page		Page
Note to Sporting Goods Dealer.....	Inside Front Cover	Galaxie Aluminum Arrows and Shafts.....	15
Instructions to Dealers.....	Inside Front Cover	Galaxie Port Orford Cedar Arrows.....	16-17
Synopsis History of Archery in War.....	1	Gaalaxie Glass Arrows aand Shafts.....	18
Archery in Hunting.....	2-3	Galaxie Leather for Women.....	19
Archery—Target and Field.....	4	Galaxie Men's Leather Quivers.....	20-21
Selection and Care of Archery Equipment.....	5	Galaxie Vinyl Quivers—	
Glossary of Some Archery Terms.....	5	Men's and Children, Bow Cases, Hats.....	22
Archery as a Family Sport.....	6	Galaxie Gloves and Arm Guards.....	23
Appollo and Venus Tournament Bows.....	7	Canteen, Slingshot, Hush Bow Quivers and	
Titan and Lady Titan Tournament Bows.....	8	Display Rack.....	24
Lord and Lady Tournament Bows.....	9	Galaxie Archery Accessories.....	25-26
Saturn, Saturn II, and Jupiter Bows.....	10	Kwiikee Kwiver and Kwiikee Accessories.....	27
Mars, Vulcan and Neptune.....	11	Target Faces.....	28
Hunting Bows and Field Bows.....	11	Target Matts and Target Stand.....	29
Pluto, Nike, Ceres Bows.....	12	Bow Sights aand Archery Accessories.....	30
Ladies, Juveniles, Childrens.....	12	Arrow Making Materials and Archery Accessories... 31	
Galaxie Archery Sets.....	13	Hunting Points, Fishing Points, Bow Nocks.....	32
Galaxie Bow Fishing Equipment.....	14	Rocketeer Hunting Points.....	Inside Back Cover
		Index, String Chart.....	Back Cover

GALAXIE DACRON STRINGS

String Length	String Weights	List Price
49".....	40-50 lb.	\$1.35
50".....	40-50 lb.	1.35
51".....	40-50 lb.	1.35
52".....	40-50 lb.	1.35
53".....	40-50 lb.	1.35

String Length	String Weights	List Price
53½".....	30-40 lb. 40-50 lb. 50-60 lb. 60-75 lb.	1.35
54".....	30-40 lb. 40-50 lb. 50-60 lb. 60-75 lb.	1.35
54½".....	30-40 lb. 40-50 lb. 50-60 lb. 60-75 lb.	1.35
55".....	30-40 lb. 40-50 lb. 50-60 lb. 60-75 lb.	1.35
55½".....	30-40 lb. 40-50 lb. 50-60 lb. 60-75 lb.	1.35
56".....	30-40 lb. 40-50 lb. 50-60 lb. 60-75 lb.	1.35
56½".....	30-40 lb. 40-50 lb. 50-60 lb. 60-75 lb.	1.35
57".....	30-40 lb. 40-50 lb. 50-60 lb. 60-75 lb.	1.35
57½".....	30-40 lb. 40-50 lb. 50-60 lb. 60-75 lb.	1.35
58".....	30-40 lb. 40-50 lb. 50-60 lb. 60-75 lb.	1.35
58½".....	30-40 lb. 40-50 lb. 50-60 lb. 60-75 lb.	1.35
59".....	30-40 lb. 40-50 lb. 50-60 lb. 60-75 lb.	1.35
59½".....	30-40 lb. 40-50 lb. 50-60 lb. 60-75 lb.	1.35
60".....	30-40 lb. 40-50 lb. 50-60 lb. 60-75 lb.	1.35
60½".....	30-40 lb. 40-50 lb. 50-60 lb. 60-75 lb.	1.35
61".....	30-40 lb. 40-50 lb. 50-60 lb. 60-75 lb.	1.35

String Length	String Weights	List Price
61½".....	30-40 lb. 40-50 lb. 50-60 lb. 60-75 lb.	1.35
62".....	30-40 lb. 40-50 lb. 50-60 lb. 60-75 lb.	1.35
62½".....	30-40 lb. 40-50 lb. 50-60 lb. 60-75 lb.	1.35
63".....	30-40 lb. 40-50 lb. 50-60 lb. 60-75 lb.	1.35
63½".....	30-40 lb. 40-50 lb. 50-60 lb. 60-75 lb.	1.35
64".....	30-40 lb. 40-50 lb. 50-60 lb. 60-75 lb.	1.35
64½".....	30-40 lb. 40-50 lb. 50-60 lb. 60-75 lb.	1.35
65".....	30-40 lb. 40-50 lb. 50-60 lb. 60-75 lb.	1.35
65½".....	30-40 lb. 40-50 lb. 50-60 lb. 60-75 lb.	1.35
66".....	30-40 lb. 40-50 lb. 50-60 lb. 60-75 lb.	1.35
67".....	30-40 lb. 40-50 lb. 50-60 lb. 60-75 lb.	1.35
68".....	30-40 lb. 40-50 lb. 50-60 lb. 60-75 lb.	1.35
69".....	30-40 lb. 40-50 lb. 50-60 lb. 60-75 lb.	1.35
70".....	30-40 lb. 40-50 lb. 50-60 lb. 60-75 lb.	1.35
71".....	30-40 lb. 40-50 lb. 50-60 lb. 60-75 lb.	1.35
72".....	30-40 lb. 40-50 lb. 50-60 lb. 60-75 lb.	1.35

String Length	String Weights	List Price
6' String Single Loop.....	30-40 lb. 40-50 lb. 50-60 lb. 60-75 lb.	1.35
60½" Yellow Jackets.....	30-40 lb. 40-50 lb. 50-60 lb. 67-75 lb.	1.35
47½" Mosquito.....	30-40 lb.	1.00
53½" Scorpion.....	30-35 lb. 40-50 lb.	1.35
Kid Hemp Strings—Length 4'6" to 5'.....		.35
Kids Hemp Strings—Length 5' to 5'6".....		.35
Kids Hemp Strings—Length 5'6" to 6'.....		.35