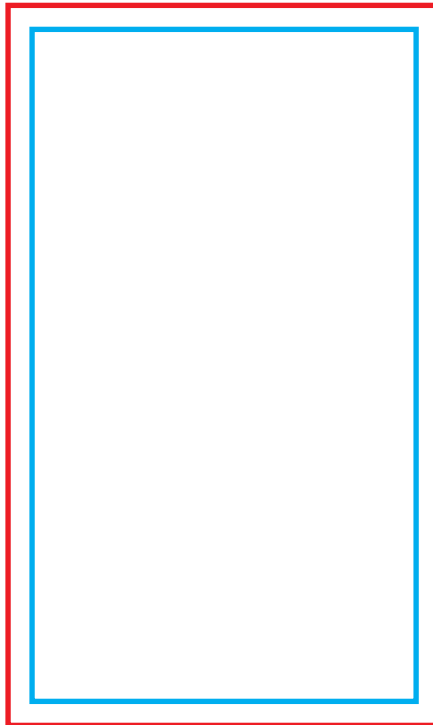


Custom Card Packaging

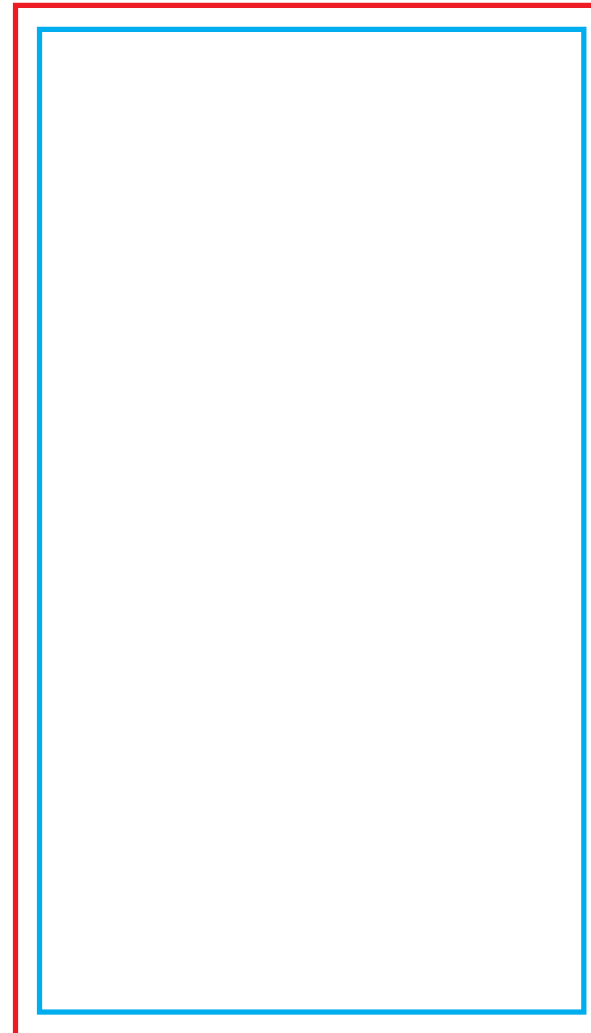
RED LINE = 1/8" Bleed

BLUE LINE = CUT

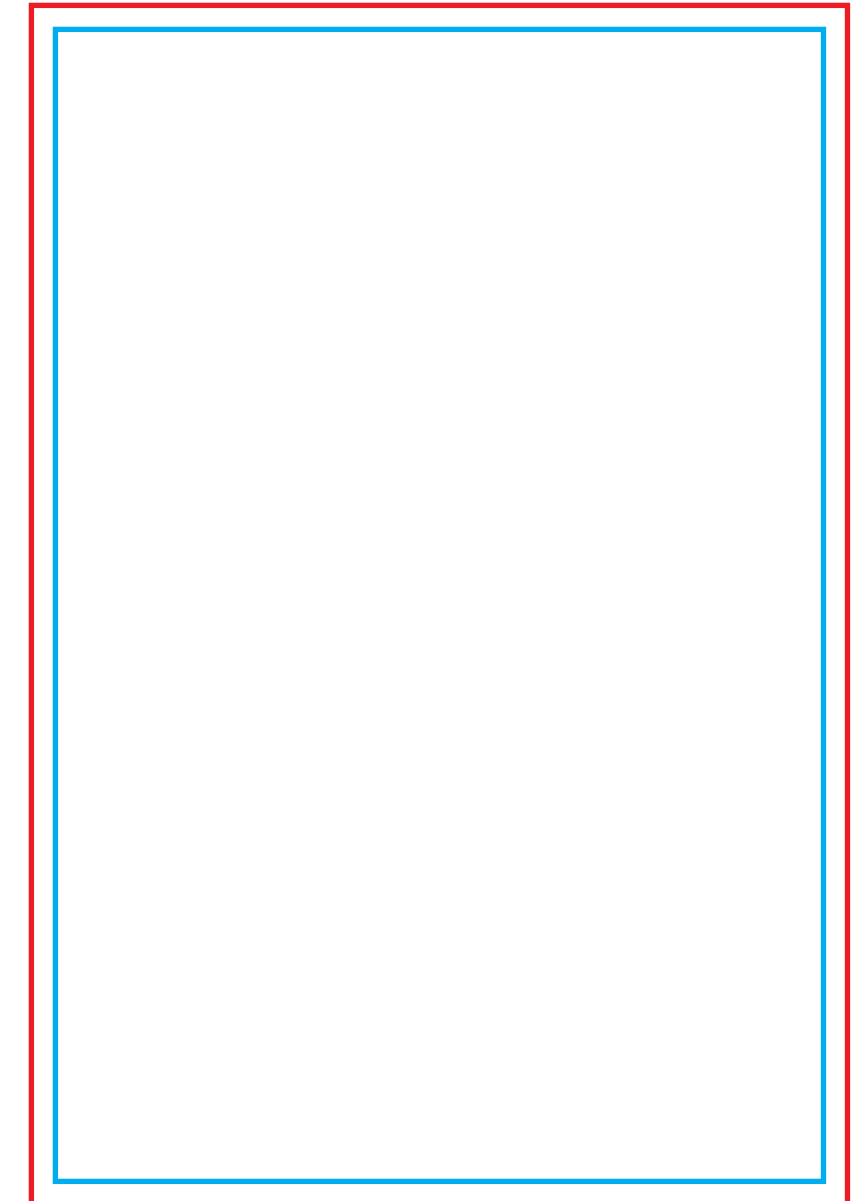
2" x 3.5"



3" x 5"



4" x 6"



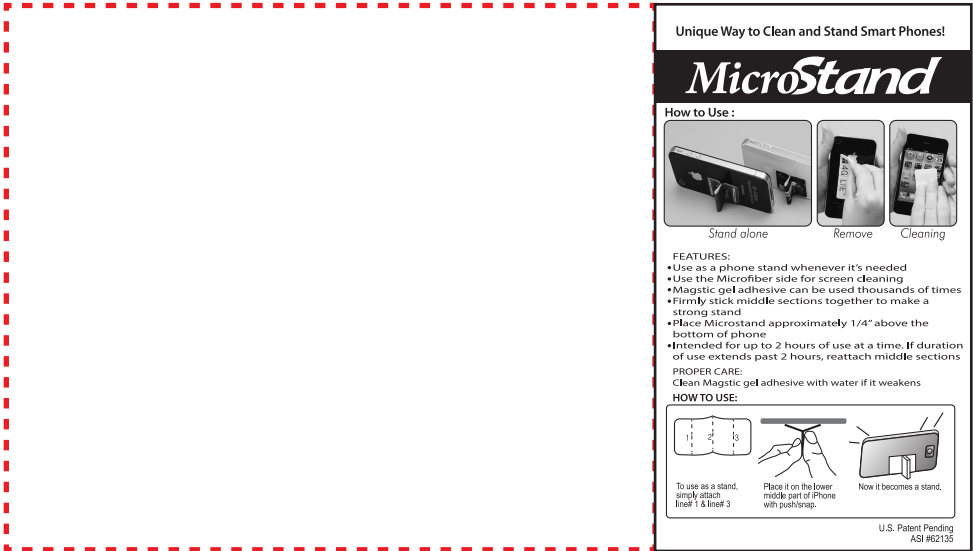
Why is adding a Bleed necessary?

Extending images 1/8" beyond the final trim size guarantees that images truly will go all the way to the edge of the print

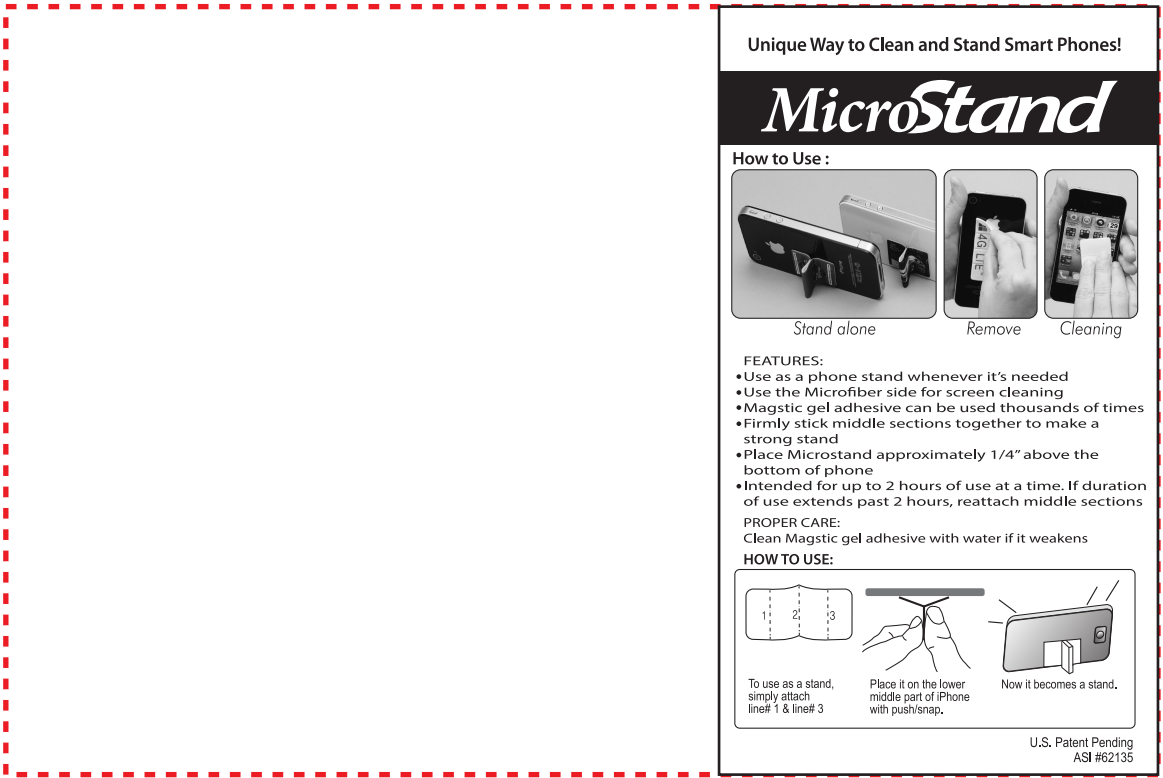
Back of Card with Instructions Layout Choices

Stock Card

3" x 5" - Horizontal



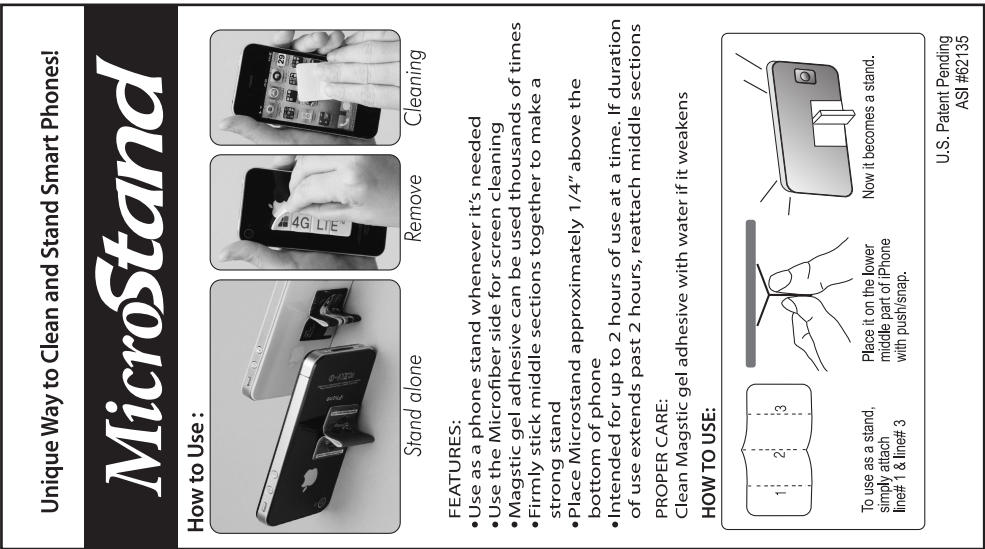
4" x 6" - Horizontal



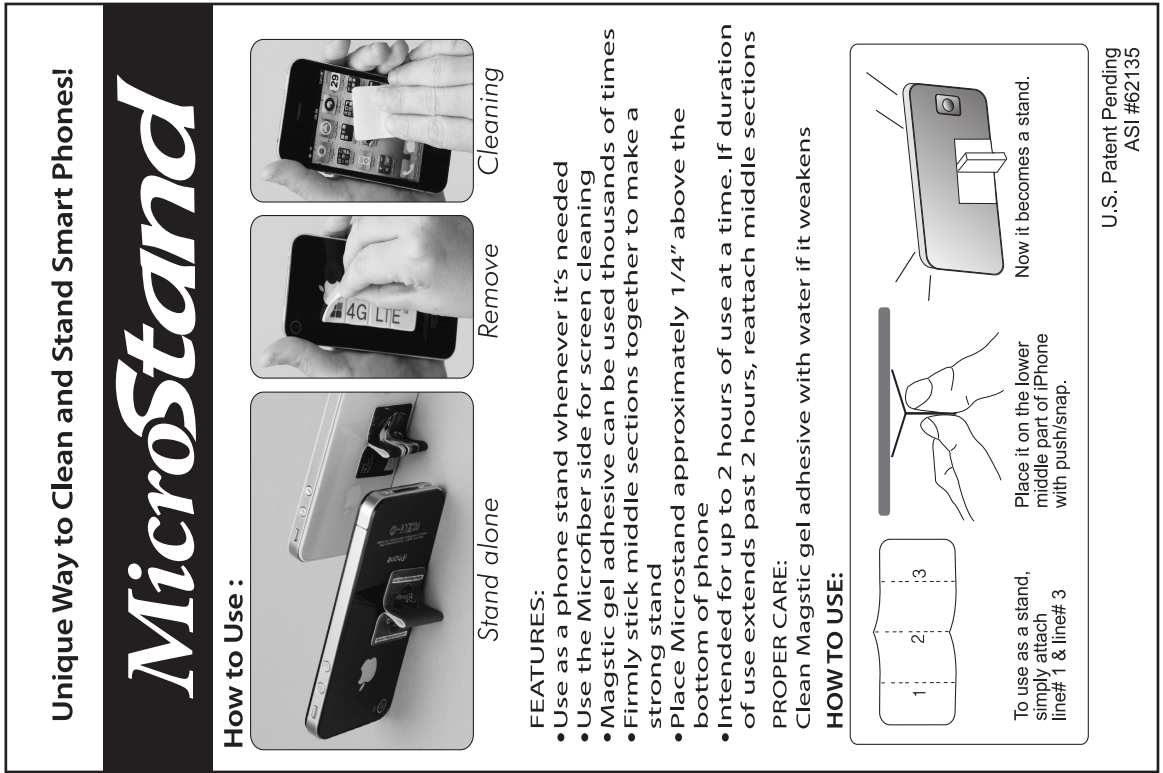
Front



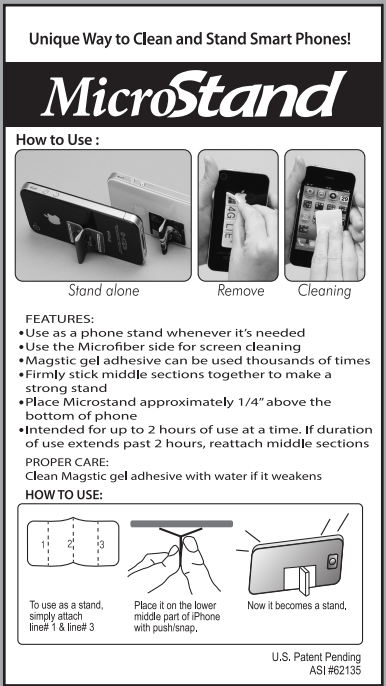
3" x 5" - Vertical



4" x 6" - Vertical

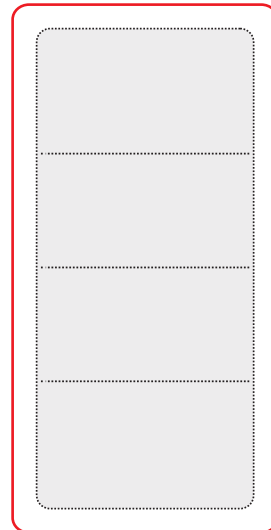


Back

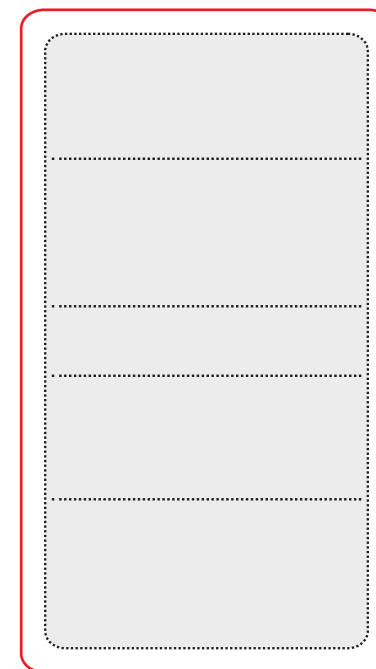


Sizes

A
2.5" x 1.13"



B
3.2" x 1.68"



RED LINE= 1/8" BLEED