

CHRIST'S COMMUNIQUE

Issue: 616 September 15, 2022



9am Drive-In:

Drive-In parking lot worship, bring your own chair, device for bulletin if able, bulletins are available. **FM88.1**

Live Streaming on FB & later on our website.



10:30am Sanctuary:

In-Door Traditional worship, space available for those wanting to continue to wear masks & social distance, not needed in all other pews. Currently worshippers are invited to receive Holy Communion at the Nave level, individual communion, mask & hand sanitizer provided.

*Please keep informed of "Community Transmission Level", we are presently at the **HIGH** Level.*

The guidelines for High Transmission Level is to wear a mask indoors in public.

A Note from Pastor Cindy:

"Grace to you and peace from God our Father and the Lord Jesus Christ. I thank my God every time I remember you, constantly praying with joy in every one of my prayers for all of you, because of your sharing in the gospel from the first day until now. I am confident of this, that the one who began a good work among you will bring it to completion by the day of Jesus Christ. It is right for me to think this way about all of you, because you hold me in your heart, for all of you share in God's grace with me..." (Philippians 1:2-7a)

Dear Friends in Christ, Thank you! It was a blessing to have time away for sabbatical this summer. It was a blessing to be back in the pulpit on Sunday too. It continues to be a blessing to share in Christ's ministry with you!

Thank you for time away to catch my breath after a crazy couple of years. The opportunity to step back from day-to-day details, weekly preparations, and monthly planning has indeed given me a sense of refreshment and renewal and helped me look to the future of our ministry together. Over the coming year, I hope to have time to talk and plan and dream with many of you about how Christ Lutheran can best share the love of God in the years to come.

Thank you for time away to spend with my family! It was quite a summer for us. Graduation, wedding, moving Chris out of his place and into our home, a honeymoon, a wedding reception... I am not sure how we could have done it all while keeping up with church-work life too. What a gift you have given to our whole blended family!

In June, I shared with you some of my church-related sabbatical goals. While I was not able to meet them all, I was able to get a start. By the end of the year, we should have a new and improved website up and running. Thank you for the time to research and learn and begin the process. Please let me know if you would like to help in this project in any way.

Thank you for being the hands and feet and face of our Lord through the ministry of Christ Lutheran Church. And thank you for the renewed opportunity to be a part of it!

In Peace,
Pastor Cindy

Ways to Support Christ's Ministries & More . . .

Upcoming Worship Times

On Tuesday 9/13 church council met to approve the times for worship recommended by the Worship and Music Committee.

These times will start on Reformation Sunday October 30.



- ♦ Continuation of the **9am Drive-In** outdoor service with the option to move inside to the Fellowship Hall during colder months or inclement weather.

Moving inside to the FSH would start November 6th.



- ♦ **Traditional Worship at 11am in the Sanctuary.**

This schedule will allow time between services for Faith Formation and Fellowship gatherings.



SIGN UP NOW!

GROUPS BEGIN MEETING MID-OCTOBER

WHO: Adults interested in gathering with others for faithful conversation.

WHAT: Small groups of 8-12 others will engage in discussion about how to deepen our relationships with God, others, and the world.

WHEN: Groups will gather once a week for six weeks beginning the week of **October 9.**

*Sundays, Noon-1:30pm

*Mondays, 7:00pm-8:30pm

*Wednesdays, 10:30am-noon

*Thursdays, 7:00pm-8:30pm

WHERE: Christ Lutheran Church.

SIGN UP: After Sunday worship, Or call the church office (540)982-8334, OR our website: christlutheranroanoke.org click on link.

FOR MORE INFORMATION: Contact Tom; Pastor Dave, Pastor Cindy.

Connecting with Others . . .



Prayer for Families, Friends, Community & the World

9/18- Grace, Reese, Loraine (Kim Aunt- cancer), Gwen, Juanita, Gloria, Pam, Terry, John.

9/11- Anita, Chad, Students of William Fleming HS.

9/4- Steve (healing & recovery), Natalie (healing), Nancy, Floyd, Gudrun, Linda (recovering) Travis.

8/28- Diane, Frank, Claire (illness), Russell, Geri, Kris, Whitney.

Families of: 8/28- Jacobson family (Peggy loss her sister), Queen family (loss of family member & her baby), Jean (Jo's mother).

Sunday Scripture Readings for September/October 2022

September 18th: 15th Sunday After Pentecost: Amos 8:4-7, Ps 113, 1 Tim 2:1-7, Luke 16:1-13

September 25th: 16th Sunday After Pentecost: Amos 6:1a, 4-7, Ps 146, 1 Tim 6:6-19, Luke 16:19-31

October 2nd: 17th Sunday After Pentecost: Hab 1:1-4, 2:1-4, Ps 37:1-9, 2 Tim 1:1-14, Luke 17:5-10

October 9th: 18th Sunday After Pentecost: 2 Kings 5:1-3, 7-15c, Ps 111, 2 Tim 2:8-15, Luke 17:11-19



**American
Red Cross**

CLC is hosting a Blood Drive on **Wednesday 9/21** in the FSH. Appointments can be made online: **redcrossblood.org** and are from 1:30-7pm. Entry is through the Fellowship Hall door.

Thank you for continuing to give of your finances to support Christ Lutheran and our community ministries. Giving options are online or in the US post mail.

August 2022 YTD Financials

Income \$289, 784

Expense \$345, 595

Net \$(55, 811)



Sam & Vicki announce with joy the marriage of their daughter Gretchen to Lars on Saturday, September 3rd. The couple will be living in Atlanta, GA.

Welcome our New Members to the Christ Lutheran Family

Michael (Mike)

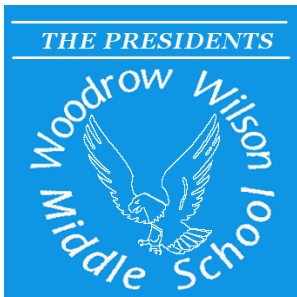
James (Jim)

Jean

Mary



- **RAM HOUSE** dining room is currently closed until further notice. Bagged lunches this month will be on **Friday September 30**. Questions please contact Kathy.



- **WOODROW WILSON MS:** is starting a food pantry for students and families to take items home over the weekend. The school is in need of food donations, if you are able to help, please drop off items at the church office. This is a helpful way to support our school community. Please label your bag with WWMS so that the items are sent to the correct location.

Canned Goods: Beans, Soup, Tuna, Veggies, Fruit.

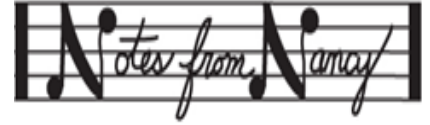
Dry Goods: Pasta, Rice, Peanut Butter, Jelly, Honey, Pasta Sauce, Cereal, Applesauce, Macaroni and Cheese, Cereal Bars, Dehydrated soup packets.

Snacks: Juice Boxes, Crackers (Ind. Pkg.), Chips (Ind. Pkg.), Fruit Snacks (Ind. Pkg.).

Groups Are Starting Back Up!

ADULTS EVENTS

CHOIR REHEARSALS have resumed on Wednesday nights, 7:30pm. Questions call Nancy.



WOMEN'S BIBLE STUDY resumes on Monday nights, 7pm in the parlor. Questions Donna.

ADULT BIBLE STUDY resumes on Monday mornings, meetings will be in the FSH, Zoom availability at 10:30am. All are welcome to join this group. Passages for the next Sunday will be studied. Questions Pastor Cindy & Pastor Dave.



YOUTH & FAMILIES



CONFIRMATION

Students and Parents will be gathering with Pastor Cindy on **Sunday 9/18** in the FSH @ 11:45am.



Virginia Synod, Evangelical Lutheran Church in America

LOST and FOUND

Calling all 7th and 8th graders! !! Join us from **Friday November 18** through Sunday 20th. An email was sent out if you have not received one please call the church office. For more detail contact Pastor Cindy.



HELLO YOUTH GROUP

Join us on **Sunday 9/25**, 12 noon, at the church. Heading out to Layman's Farm: Corn maze, petting zoo, hayride, and games. Bring \$15 entrance fee, eat before you come or bring a bagged lunch. Youth advisors are Deb & Colin.

EACH WEEK AT CHRIST LUTHERAN

- 9am Sunday Drive-In & Facebook Live Streaming Worship.
- 10:30am Sunday In-Door Traditional Worship.
- Women's Bible Study Monday nights in the parlor @ 7pm.
- Adult Bible Study Monday mornings in the FSH @ 10:30am. Zoom availability.

FOLLOW US ON
<https://www.facebook.com/christlutheranroanoke>



www.christlutheranroanoke.org

Newsletter publications can be found on our website. christlutheranroanoke.org

STAFF OF CHRIST LUTHERAN

Senior Pastor: Rev. David Skole,
(O) 982-8334 ext#12, (C) 815-9989.
pastordavid@christlutheranroanoke.org

Pastor: Rev. Cynthia Keyser,
(O) 982-8334 ext#13, (C) 815-9989.
pastorcindy@christlutheranroanoke.org

Church Office Administrator: Fiona Schulz,
(O) 982-8334 ext#10.
secretary@christlutheranroanoke.org

Organist/Dir. Music: Nancy Delaney,
(H) 597-3189.

Director, Noah's Landing: Diana Pilat,
(O) 982-2254, noahslandingpreschool.org

Treasurer: Judy Addison, (O) 982-8334 ext#14,
treasurer@christlutheranroanoke.org

Financial Secretary: Joyce Noell,
(O) 982-8334 ext#14,
financialsecretary@christlutheranroanoke.org

New Song Music: Kim Mucha (C) 529-5456

Good news especially for:

Non-Profit
Organization
U.S.
Postage
PAID
Roanoke,
Virginia
Permit #444

Christ Community
Christ Evangelical Lutheran Church
2011 Brandon Avenue, SW
Roanoke, Virginia 24015