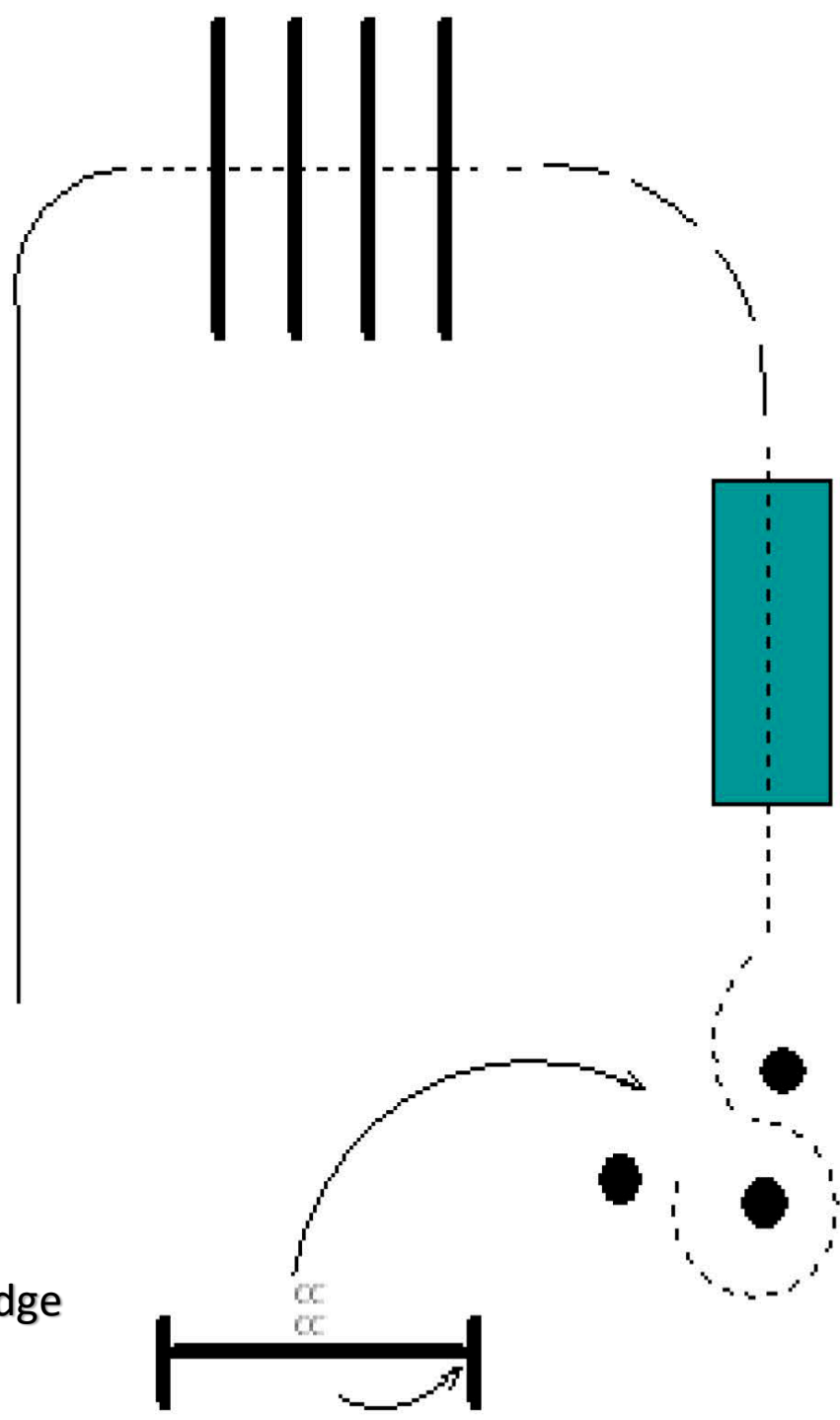
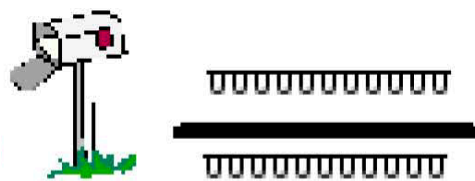


# Trail Pattern (all ages)



- 1) Work Gate
- 2) Walk to Cones
- 3) Back Thru Cones
- 4) Walk to and Over Bridge
- 5) Trot to Poles
- 6) Walk Over Poles
- 7) Lope (left lead) to Pole
- 8) Sidepass to Right
- 9) Take Mail out of Mailbox
- 10) Sidepass to Left
- 11) Walk Out