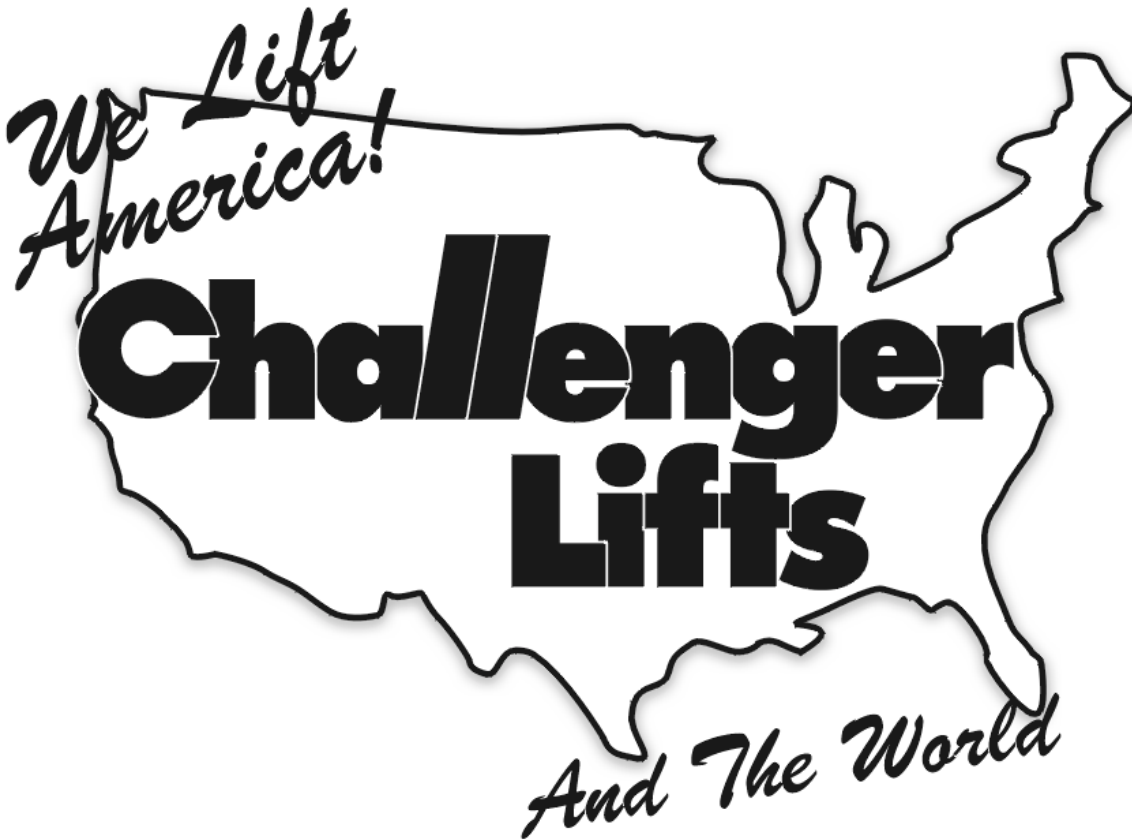


Challenger Lifts, Inc.

DeTEK

Liquid Detection System



IMPORTANT!!!

READ THIS MANUAL COMPLETELY BEFORE INSTALLING OR OPERATING LIFT

*200 Cabel Street, P.O. Box 3944
Louisville, Kentucky 40201-3944
www.challengerlifts.com*

Office (502) 625-0700

Fax (502) 587-1933

**DeTEK Liquid Detection System
Installation/Operation Addendum**

Assembly / Installation

- 1) Verify all items against the enclosed packing list. Notify Challenger Lifts Service of any shortages or damage at (800) 648-5438.
- 2) **Retrofit:** Disconnect the air and hydraulic hoses at the power unit end. Attach one fish tape or wire to the free end of the hydraulic hose and airline. Remove the center cover from the cassette lift. Pull each the hydraulic hose and airline through the chase. Coil these items out of the way for use later. Using the fish tape that was just pulled through the chase attach the leading end to the MI cable assembly. Attach a second fish tape or wire to the first. Using two people (one push and one pull) pull the MI cable assembly (16568) through the chase up to the power unit.

Install: Remove the center cover from the cassette lift. Beginning at the power unit, feed a fish tape or wire down to the cassette lift through the chase. Attach the leading end of the fish tape to the MI cable assembly. Attach a second fish tape or wire to the first. Using two people (one push and one pull) pull the MI cable assembly (16568) through the chase up to the power unit.

- 3) Attach the MI cable assembly (16568) to the Strut (16569) using the supplied worm gear clamps (16574). The float should be approximately three inches below the bottom of the strut (16569). Refer to Figure 1.
- 4) Locate the Pick Up Tube (16538) and attach to the Strut Assembly from Step 3 beginning at the float switch end. Attach the Pick Up Tube (16538) to the MI Cable using the supplied Wire Ties (16572) as seen in Figure 1 and trim.

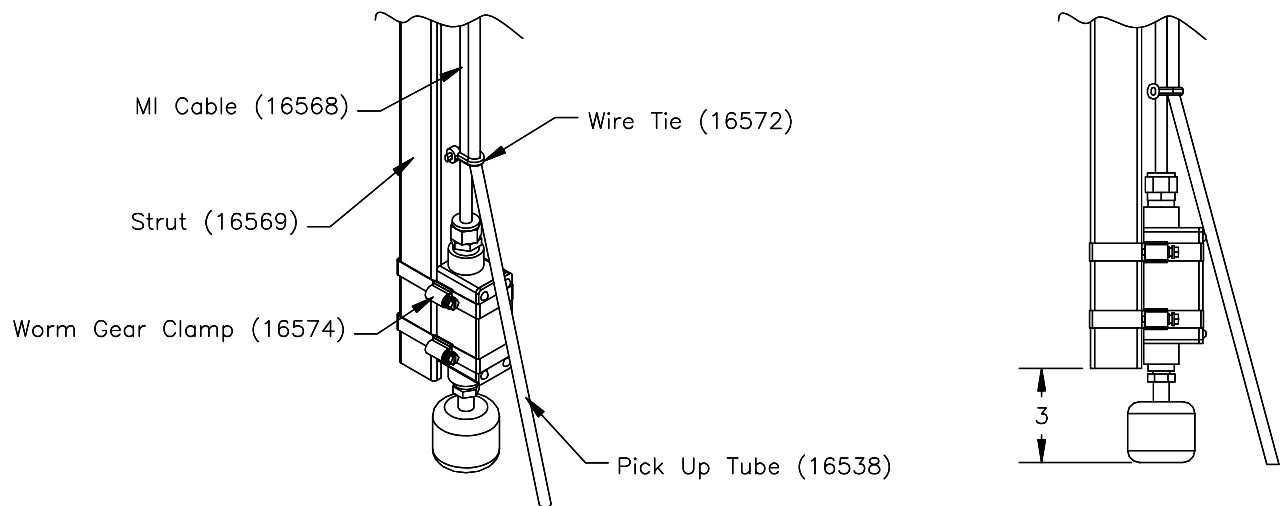


Figure 1

- 5) Remove the ½-13 hardware from the side nearest the PVC chase of one of the frame support channels.

**DeTEK Liquid Detection System
Installation/Operation Addendum**

- 6) Hang the assembly from Step 4 on the inside of the channel and attach with the hardware removed in Step 5. Take care to insure that the Float/Hanger assembly is relatively plumb and within the vertical channel so that it may not be damaged by the moving components of the lift. The float stem should be resting on the bottom of the frame without obstructing the movement of the float. See Figure 2.
- 7) Straighten the MI cable and route the Pick Up Tube (16538) along side and tie it off with the Wire Ties (16572) provided. Pull the remaining cable through the PVC chase and coil below the box.

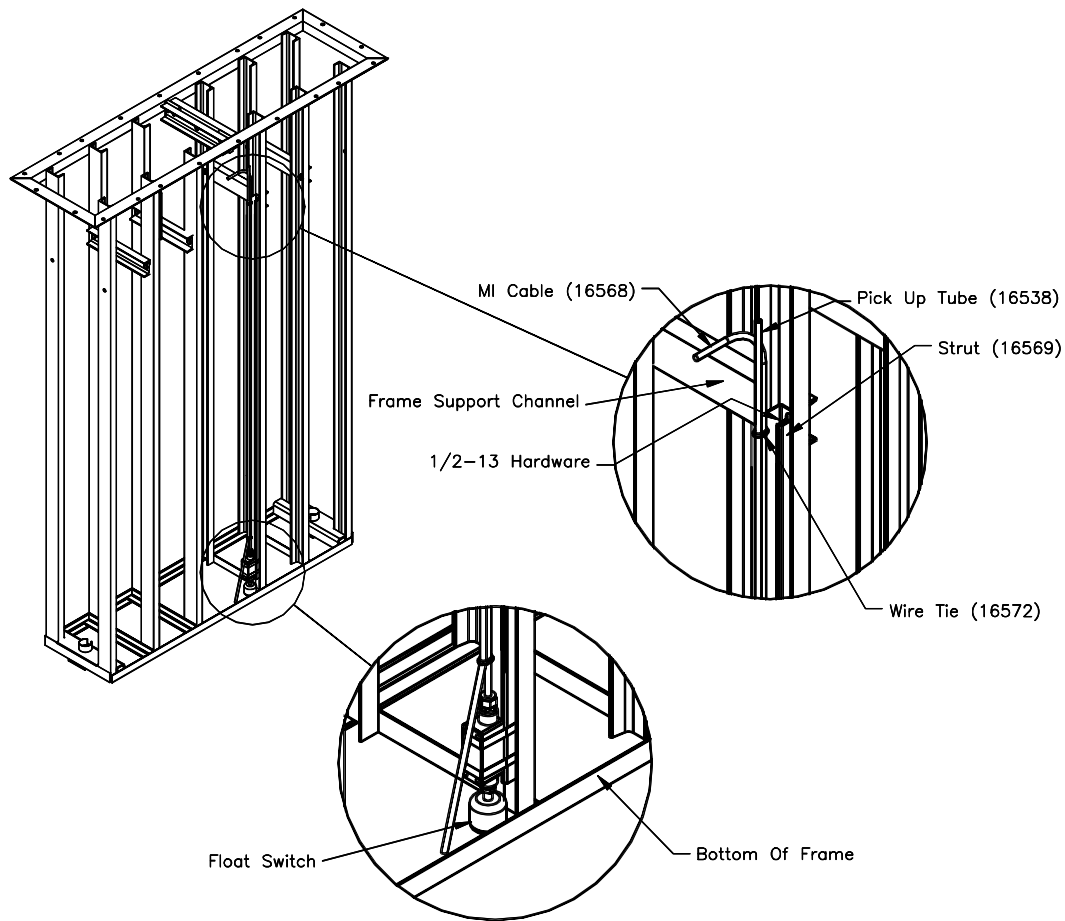


Figure 2

- 8) Disconnect both fish tapes from the MI cable and use the second to pull the first back through the chase. Attach the fish tapes to the free end of the Pick Up Tube (16538) and pull this line through the chase. Repeat this process until all air lines and hydraulic hose are chased.
- 9) Replace the center cover; bolts should be torqued to 60 ft-lbs. Reapply a bead of 100% silicone around the perimeter of the center cover.
- 10) Locate the Panel Assembly (16516). With the existing 5/16-18 hardware attach this assembly behind the power unit bracket as shown in Figure 3.

**DeTEK Liquid Detection System
Installation/Operation Addendum**

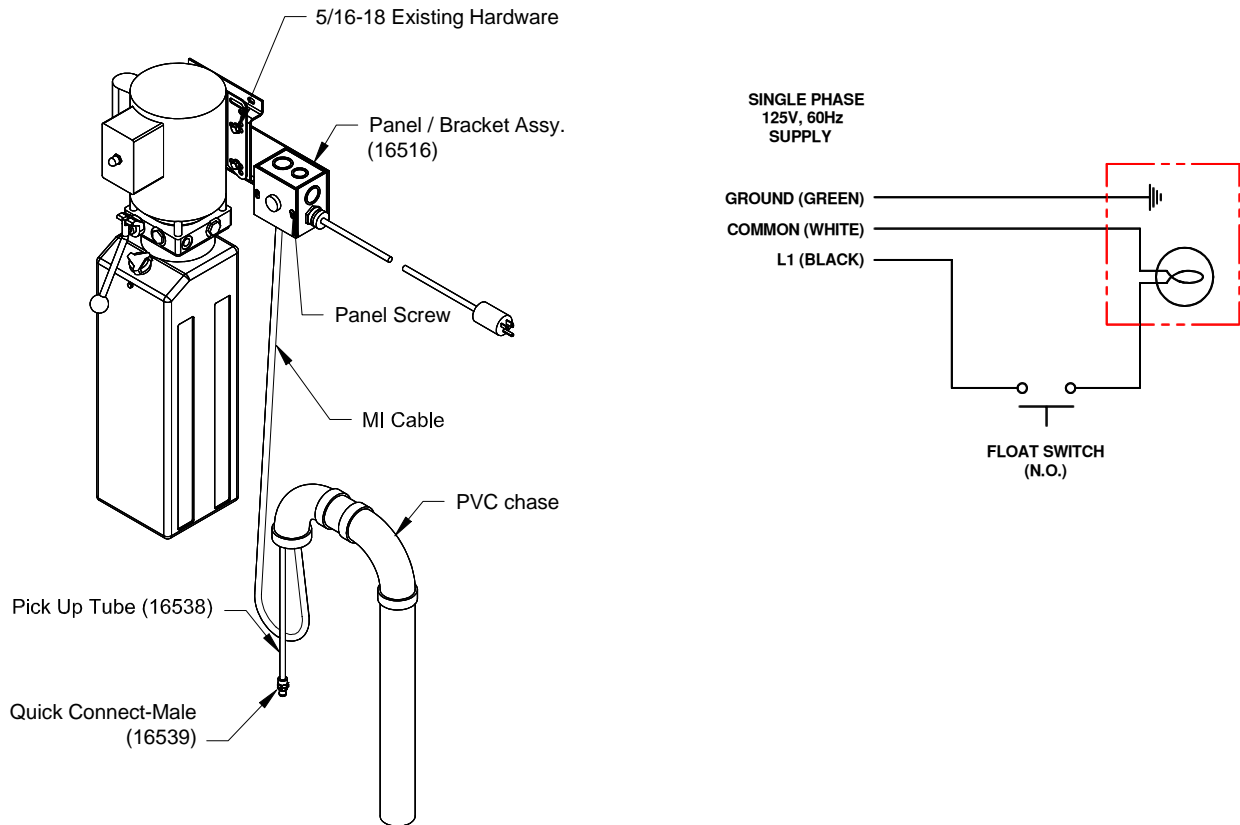


Figure 3

- 11) Trim the pick up tube (16538) so that approximately 12 inches extends beyond the PVC chase. Attach the Quick Connect-Male fitting (16539) to the end of the pick up tube (16538).
- 12) Loosen the panel screws and lift to remove the cover.
- 13) Attach the MI cable assembly to the panel using the 1/2" Panel Nut (16573) supplied. Attach one lead to the terminal marked "X1" of the light. Attach the other lead to the free lead of the power cord using the Yellow Wire Nut (31120) provided.
- 14) Replace the cover and tighten the screws.
- 15) Plug the unit into a suitable outlet (120 Volt, 15 Amp).

Operation

The red light on the panel will illuminate when approximately 8 gallons of fluid has collected in the containment tub. This indicates the need for fluid removal, which can be accomplished with the Challenger EnviroVAC. If this indicator light is ignored fluid may continue to build up and possibly damage working components of the lift.