

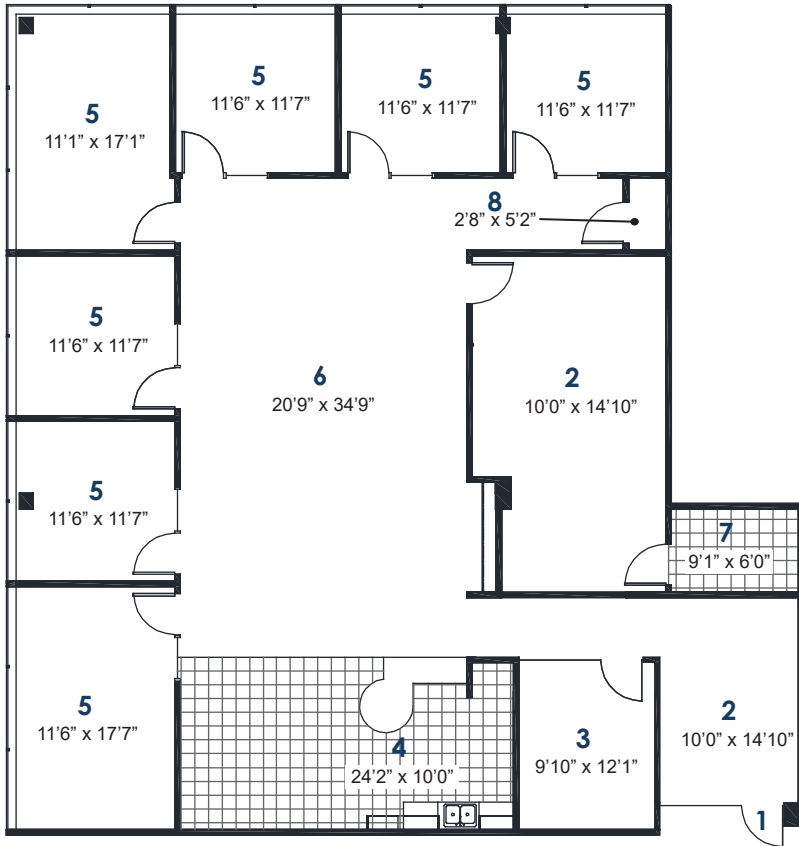
# THE ATRIUM

6811 S. 204th Street, Kent, WA 98032

## Suite 280

(253) 395-9226

CREATING THE **BEST PLACE**  
FOR THE **BEST PEOPLE** TO WORK.



**3,783** R.S.F

- |                     |                    |           |
|---------------------|--------------------|-----------|
| 1 Glass Suite Entry | 4 Break Room       | 7 I.T.    |
| 2 Reception Area    | 5 Office           | 8 Storage |
| 3 Conference        | 6 Open Office Area |           |



## OPEN & COLLABORATIVE WORK ENVIRONMENTS

LARGE CONTIGUOUS SPACES  
FOR GROWING COMPANIES

PRE-BUILT INSTA-SUITES  
FOR SMALLER COMPANIES

LINK-ABLE SUITES  
FOR EASY EXPANSION

# THE ATRIUM

8611 S. 204th Street, Kent, WA 98032

## ENGAGE YOUR EMPLOYEE'S NEEDS...

### CULTURE & AMENITIES



- 1/4 & 1/2 Mile Outdoor Fitness Paths with Stretching Station
- On-Site Management, Engineering & Design Team
- Corporate Barbeque Areas
- Nature trail along Mill Creek
- Conference Center with rooms up to 200 people



**24/7 GYM ACCESS**

Rachel's Body Shop

Full service 24/7 fitness center & personal training ([www.rachelsbodyshop.com](http://www.rachelsbodyshop.com))



**EARLY EDUCATION**

Bright Horizon's Child Care

Providing infant to pre-kindergarten programs ([www.brighthorizons.com](http://www.brighthorizons.com))



**FULL SERVICE**

Alki Bakery Cafe

Providing breakfast, lunch & catering services. ([www.alkibakery.com](http://www.alkibakery.com))



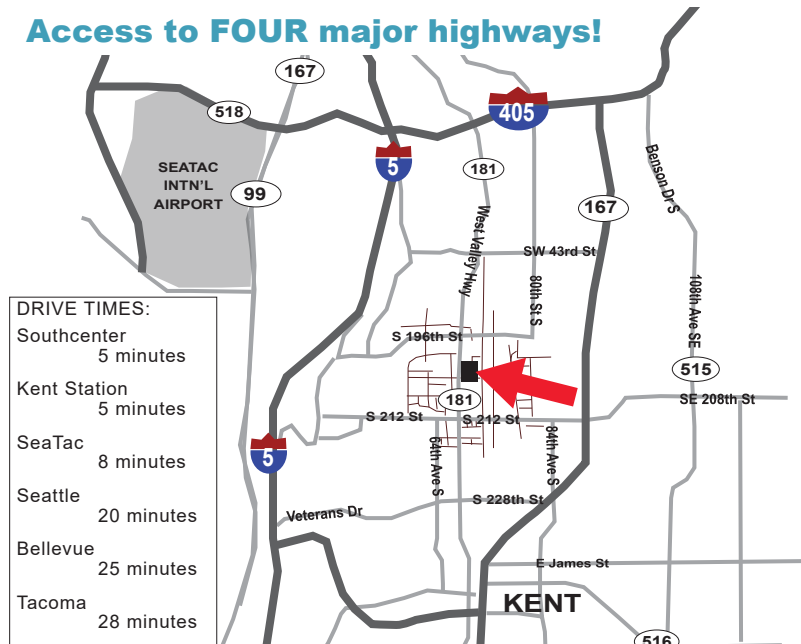
**CLOSE TO EVERYTHING..**

- Shopping
- Hotels
- Restaurants
- Entertainment
- Schools
- Housing

**+ ON SITE**

**TRANSPORTATION ROUTES**

**Access to FOUR major highways!**



FOR MORE INFORMATION

[www.FountainheadNorthwest.com](http://www.FountainheadNorthwest.com)

253-395-9226

**Fountainhead Northwest**  
OFFICE DEVELOPMENT