

**HARMONY**  
CLOTHES

W. SEITCHIK  
& SONS, INC.

FALL & WINTER  
COLLECTION

2023 - 2024



**HARMONY** at 125



# HARMONY CLOTHES IN-STOCK SERVICE

LEADERS IN SPECIAL SIZE CLOTHING  
SERVICING SPECIALTY RETAILERS FOR 125 YEARS

SUIT SEPARATES	PAGE 1
CONVENTIONAL, PORTLY, JUMBO, MODERN FIT SUITS	PAGE 2-3
SPORTCOATS, BLAZERS & VESTS	PAGE 4-11
OUTERWEAR	PAGE 12-14
OUTERWEAR DESCRIPTIONS	PAGE 15

## DROP CHART

### CONVENTIONAL FIT

Chest Measurement	36	38	40	42	44	46	48	50	52	54	56	58	60	62	64	66
Conventional Fit-Waist	30	32	34	36	39	41	44	46	48	50	52	54	56	58	60	62

### MODERN FIT

Chest Measurement	36	38	40	42	44	46	48	50	52	54	56	58	60
Modern Fit-Waist	29	31	33	36	38	40	42	45	47	49	52	54	56

### PORTLY FIT

Chest Measurement	38	40	42	44	46	48	50	52	54	56	58	60	62	64	66	68	70	72	74	76	78	80
Portly Fit-Waist	35	37	39	42	44	46	49	51	53	56	58	60	62	64	66	68	70	72	74	76	78	80

DIRECT LINE TO ORDER DEPARTMENT  
FOR CUSTOMER SERVICE

**1-800-523-0814**

All Other Departments • (215) 743-0400  
Convenient Fax Number for Ordering • (215) 743-5914  
Eastern Time: Monday thru Friday • 8:00 a.m. - 5:00 p.m.

WE HAVE  
DISPOSABLE MASKS!



**(PICTURED ON COVER, REDA SPORT COAT 2058)**

Sold in boxes of 50





**70121**  
Black

**70122**  
Navy

**70123**  
Charcoal

**70126**  
Grey

**70132**  
Cobalt

***SUITED SEPARATES***

REVERSE TWIST PERFORMANCE FABRIC

53% POLYESTER 44% WOOL 3% LYCRA



**CONVENTIONAL FIT**

**ARDON COAT**

2 BUTTON-CENTER VENT

Regular	38-60
Short	38-50
Long	40-60
X-Long	40-60

**PORTLY FIT**

**PRINCETON COAT**

2 BUTTON-CENTER VENT

Portly Regular	42-68
Portly Short	42-60
Portly Long	50-68

**AIDEN TROUSERS**

PLAIN FRONT

Regular	30-68
Short	30-60
Long	32-68



70126



YEAR ROUND CLASSICS

PORTLY FIT

100% WORSTED WOOL

**CONDOR**

2 BUTTON-SIDE VENT  
PLAIN FRONT

Portly Regular	44-72
Portly Short	42-60
Portly Long	50-72



**67371**  
Black Twill

Additional  
Super Sizes

**69901**  
Black Twill

Portly:  
Regular 70-80  
Long 70-80



**67372**  
Navy Twill

*SUPER 120s*  
TRADITIONAL FIT

**BRANDON**

2 BUTTON-SIDE VENT  
PLAIN FRONT

Regular	38-60
Short	38-48
Long	42-60
X-Long	46-54



**67381**  
Black Mini Bone  
*Also available  
in Portly Fit*

Portly:  
Regular 44-54  
Short 44-54



**67382**  
Blue Mini Bone





**47216**

Grey



**47218**

Burgundy



**47222**

Cobalt

**LUXURY WOOL SUITS**  
**SUPER 100s WORSTED**  
**WOOL SUIT**

100% WORSTED WOOL

**MODERN FIT**

**PINOT**

2 BUTTON-SIDE VENT-PLAIN FRONT

Regular	36-60
Short	38-46
Long	40-60

**DROP CHART**

36-40 - 7"
42-48 - 6"
50-54 - 5"
56-60 - 4"



47222



**SPORTCOATS**  
100% WOOL

*Super 130's*  
*Fabric Woven in Italy*  
*1/2 Canvas Construction*  
*Full Sleeve Placket - Jacquard Lining*

**CONVENTIONAL FIT**

**LUCCA**

2 BUTTON-SIDE VENT



**2002**  
New Blue

Regular	38-60
Short	38-48
Long	40-60
X-Long	44-56



**2068**  
Burgundy Plaid

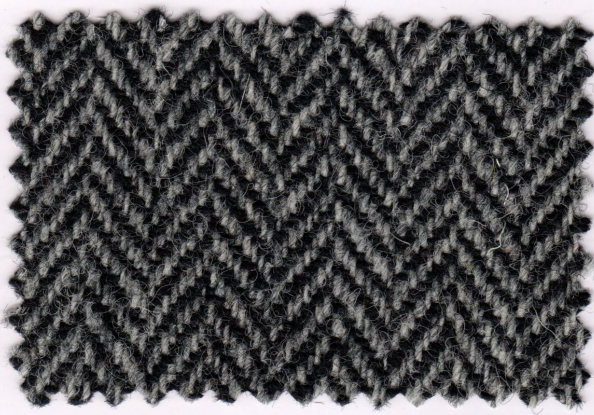
Regular	38-56
Short	42-46
Long	42-54



**2062**  
Blue Plaid

Regular	38-56
Short	42-46
Long	42-54
X-Long	44-52





**1343**  
Black & White  
Herringbone



**1345**  
Olive  
Windowpane



**1349**  
Burnt Orange  
Overplaid



**1352**  
Blue  
Overplaid

SPORTCOATS

100% WOOL



CONVENTIONAL FIT

CLARK

2 BUTTON-CENTER VENT

Regular	38-52
Short	38-46
Long	40-52



1352



**BLAZERS**

100% WOOL

**CONVENTIONAL FIT**

**SIENNA**

**SCALE I**

2 BUTTON-CENTER VENT

Regular	36-60
Short	36-50
Long	38-60
X-Long	42-60

**PORTLY FIT**

**COVENTRY**

**SCALE II**

2 BUTTON-CENTER VENT

Portly Regular	42-72
Portly Short	40-60
Portly Long	50-72



**2931**

Black

Scale I & II



**2932**

Navy

Scale I & II

**BLAZERS**

78% POLYESTER 20% RAYON 2% SPANDEX

**CONVENTIONAL FIT**

**SIENNA**

**SCALE III**

2 BUTTON-CENTER VENT

Regular	36-60
Short	36-54
Long	38-60
X-Long	42-60

**PORTLY FIT**

**COVENTRY**

**SCALE IV**

2 BUTTON-CENTER VENT

Portly Regular	38-72
Portly Short	40-60
Portly Long	46-72



**1191**

Black

Scale III & IV



**1192**

Navy

Scale III & IV





**1141**  
Black



**1149**  
Camel



**1021**  
Black

Regular	38-60
Short	36-48
Long	40-60
X-Long	42-60

Chase Vest  
S thru 3X

Genesis Vest  
S thru 2X



**1024**  
Brown

Regular	38-60
Short	36-48
Long	40-60
X-Long	42-60

Chase Vest  
S thru L

***SPORTCOATS***  
***SUEDE TOUCH***

100% MICROFIBER

**CONVENTIONAL FIT**

**LONDON**

2 BUTTON-SIDE VENT

Regular	36-60
Short	36-48
Long	40-60
X-Long	42-58

***FAUX LEATHER***

100% MICROFIBER

***SPORTCOATS & VESTS***

**CONVENTIONAL FIT**

**LONDON**

2 BUTTON-SIDE VENT



1024



**SPORTCOATS**  
**WOOL TOUCH FAVORITES**

70% POLYESTER 30% VISCOSE

**CONVENTIONAL FIT**

**LONDON**

2 BUTTON-SIDE VENT

Regular	38-60
Short	38-46
Long	40-60

**PORTLY FIT**

**COVENTRY**

*(1382-1383-1386 ONLY)*

2 BUTTON-CENTER VENT

Portly Regular	44-60
Portly Short	42-56



1382



**1382**  
Blue Check



**1383**  
Charcoal  
Windowpane  
Plaid



**1362**  
Blue Plaid



**1363**  
Grey Plaid





**1732**  
Blue Plaid



**1733**  
Grey Plaid



**1734**  
Heather Check

**FALL ALL WOOL  
SPORTCOATS**

100% WOOL

**CONVENTIONAL FIT**

**LONDON**

2 BUTTON-SIDE VENT

Regular	38-60
Short	38-48
Long	40-60

**PORTLY FIT**

**COVENTRY**

*(1732 & 1733 ONLY)*

2 BUTTON-CENTER VENT

Portly Regular	44-60
Portly Short	42-56



1734



***SPORTCOATS  
YEAR 'ROUNDERS***

100% WOOL

**CONVENTIONAL FIT**

**SCALE I**

**SIENNA**

2 BUTTON-CENTER VENT

Regular	36-60
Short	36-50
Long	40-60
X-Long	42-60

**PORTLY FIT**

**SCALE II**

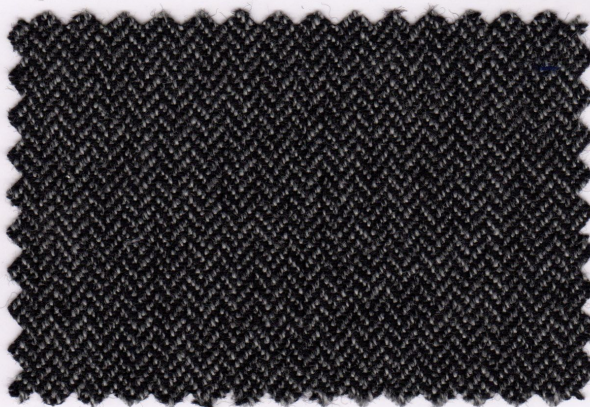
**COVENTRY**

2 BUTTON-CENTER VENT

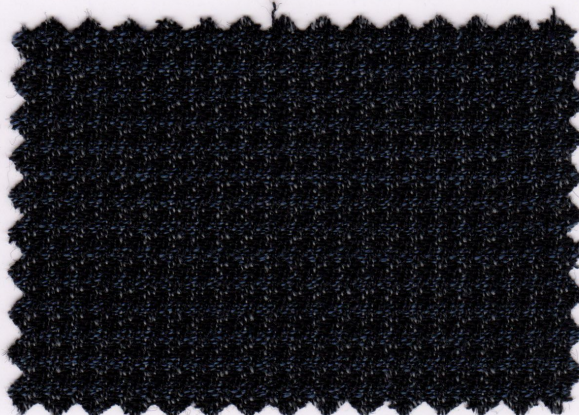
Portly Regular	42-72
Portly Short	42-60
Portly Long	50-72



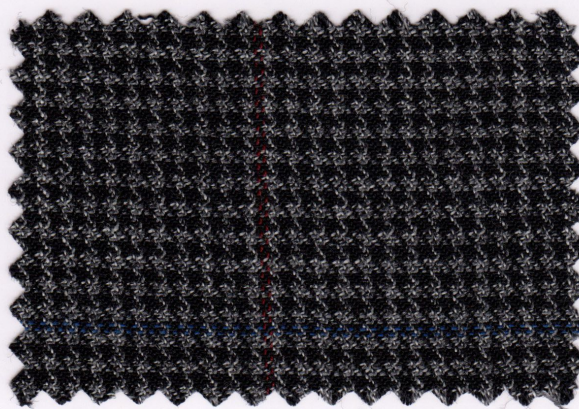
1563A



**1303**  
Grey  
Herringbone



**1562**  
Blue Check



**1563A**  
Grey  
Overplaid



**1564**  
Taupe  
Houndstooth





**2982**  
Navy



**2961**  
Black



**2967**  
Camel

LUXURY FABRICS

*PURE CASHMERE*



SPORTCOATS

100% CASHMERE

CONVENTIONAL FIT

LONDON

2 BUTTON-SIDE VENT

Regular	40-52
Short	42-46
Long	42-52

CAMEL HAIR CLASSIC

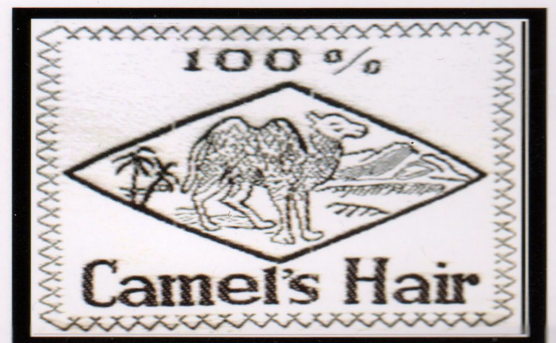
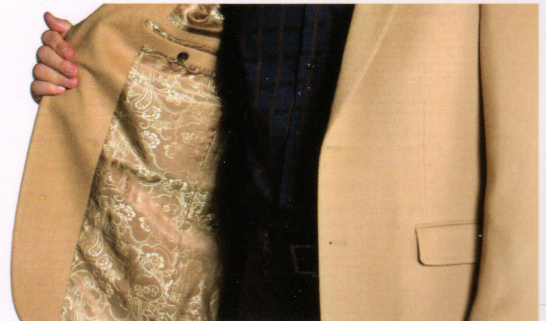
100% CAMEL HAIR

CONVENTIONAL FIT

SIENNA

2 BUTTON-CENTER VENT

Regular	38-60
Short	38-46
Long	40-60
X-Long	44-56





TOP COAT FAVORITES

CASHMERE WOOL BLEND

SANDER

Regular	38-60
Short	38-46
Long	40-60
X-Long	42-56

*PLEASE SEE  
PAGE 15 FOR  
OUTERWEAR  
DESCRIPTIONS*



**80101**  
Black  
90% WOOL  
10% CASHMERE  
Sander

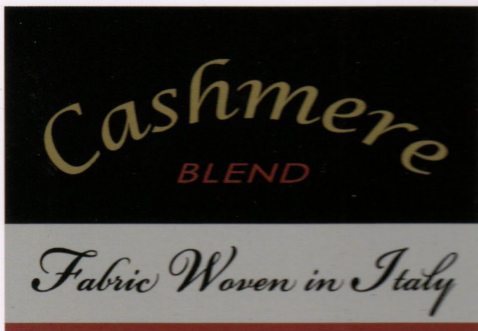
**80103**  
Charcoal  
90% WOOL  
10% CASHMERE

TOP COAT FASHION

CASHMERE BLEND  
IN 36" LENGTH COAT

STANTON

Regular	38-56
Short	38-46
Long	40-56



70% WOOL 20% NYLON  
10% CASHMERE



**80104**  
Vicuna  
70% WOOL  
20% NYLON  
10% CASHMERE

**80106**  
Cobalt  
70% WOOL  
20% NYLON  
10% CASHMERE

**80109**  
Burgundy  
70% WOOL  
20% NYLON  
10% CASHMERE





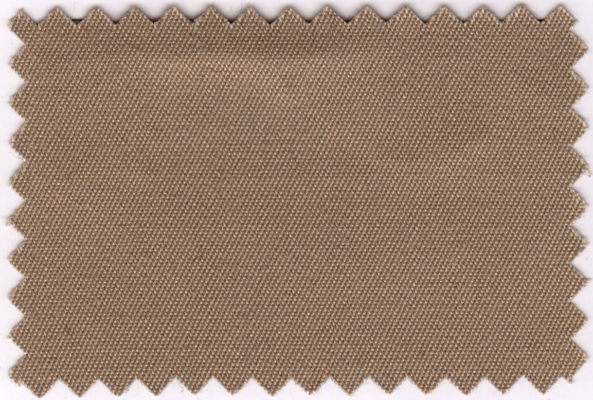
**90211**

Black

Regular 36-60

Short 36-48

Long 40-60



**90217**

Khaki

Regular 36-60

Short 36-48

Long 40-60

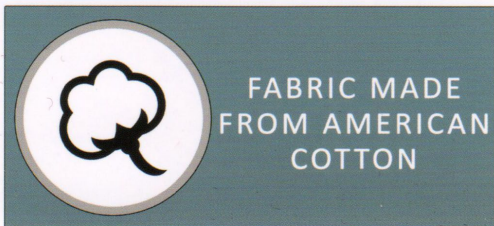
*PLEASE SEE  
PAGE 15 FOR  
OUTERWEAR  
DESCRIPTIONS*

*ALL WEATHER RAINCOAT*

(ZIP-OUT LINER)

60% COTTON  
40% POLYESTER

**BUSTER**





**TOP COAT FAVORITES**

60% WOOL 30% POLYESTER  
10% VISCOSE



**SANDER**

Regular	36-60
Short	36-48
Long	40-60
X-Long	42-56

**JEFFREY**

Regular	38-60
Short	38-48
Long	40-60
X-Long	42-56

**JACKSON**

Regular  
S, M, L, XL,  
2X, 3X, 4X, 5X

Tall  
MT, LT, XLT,  
2XT, 3XT, 4XT

**TYSON**

Regular	36-60
Short	36-48
Long	38-60

Jackson  
80113

Jeffrey  
80111

Tyson  
80111

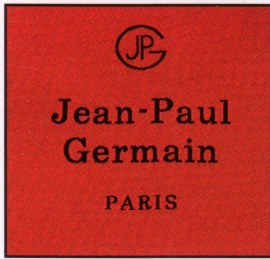


**80111**  
Black



**80113**  
Charcoal





# HARMONY OUTERWEAR

*Featuring*

## JEAN-PAUL GERMAIN DESIGNS



SANDER

Single breasted model featuring button through front, notch lapel, slash pockets, set-in sleeves, bluff edges, with two inside pockets plus a scarf pocket. 45" length.



JEFFREY

Same as the Sander, only in a more modern, updated, 38" length.



STANTON

3 button, single breasted, notch lapel, center vent, 36" Topcoat. Two inside pockets plus a scarf pocket. Fully tailored.



TYSON

Four button, buttons to the neck, 34" length (mid thigh), center vent, contrast undercollar, two slash pockets, four inside pockets including scarf pocket. Fully tailored.



JACKSON

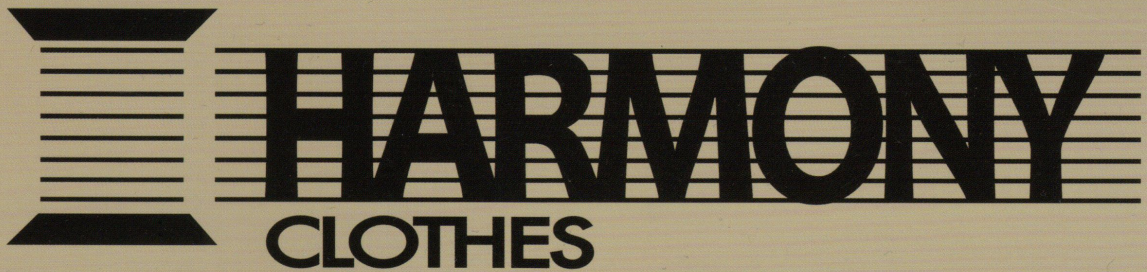
This is our 34" walking coat, featuring a 4 button thru front, slash pockets, bal collar & satin lining. This coat has 3 inside pockets. Perfect for all week to weekends!



BUSTER

Fly front, combination all weather and raincoat with zip-out liner: 1/2 quilted 1/2 wool blend. 46" length.





W. SEITCHIK & SONS, INC.

10073 SANDMEYER LANE

PHILADELPHIA, PA 19116

(215) 743-0400

(800) 523-0814

FAX: (215) 743-5914

NEW YORK SHOWROOM

(212) 398-2288

E-mail: [Harmony@wseitchik.com](mailto:Harmony@wseitchik.com)

[www.Harmony-Clothes.com](http://www.Harmony-Clothes.com)