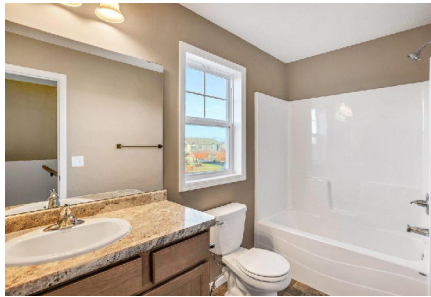


HERITAGE w/OFFICE

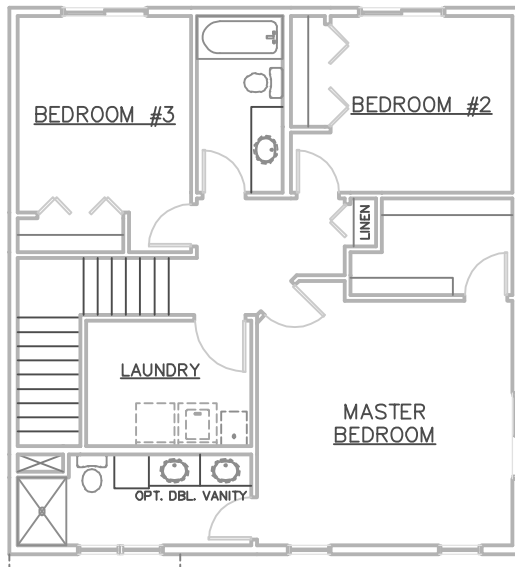


PHOTOS OF SIMILAR, PREVIOUSLY FINISHED HOME

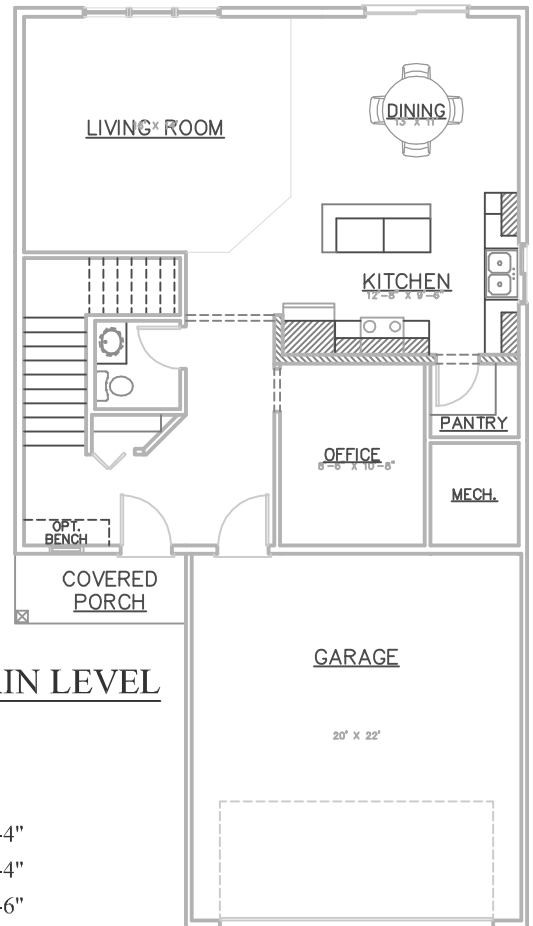


SOME OPTIONS MAY BE SHOWN

UPPER LEVEL



MAIN LEVEL



- * 3 BEDROOMS, 2-1/2 BATHROOMS
- * OFFICE
- * 1,920 SQUARE FEET
- * OPEN FLOOR PLAN
- * WALK-IN PANTRY
- * WALK-IN CLOSET
- * COVERED FRONT PORCH

ROOM SIZES

MASTER BEDROOM	15' X 14'-4"
BEDROOM #2	10'-8" X 10'-4"
BEDROOM #3	10'-2" X 11'-6"
LIVING ROOM	16' X 14'
DINING	13' X 11'
KITCHEN	13' X 10'
OFFICE	8'-6" X 10'-8"



3475 Vermillion Street, Suite 101 ~ Hastings, MN 55033 ~ 651.437.3700 ~ www.gregjhomes.com

Plans and specifications are subject to change without notice. Copyright Greg J Homes of Hastings Inc. 2024