

# Exploring the Timmins Gold District

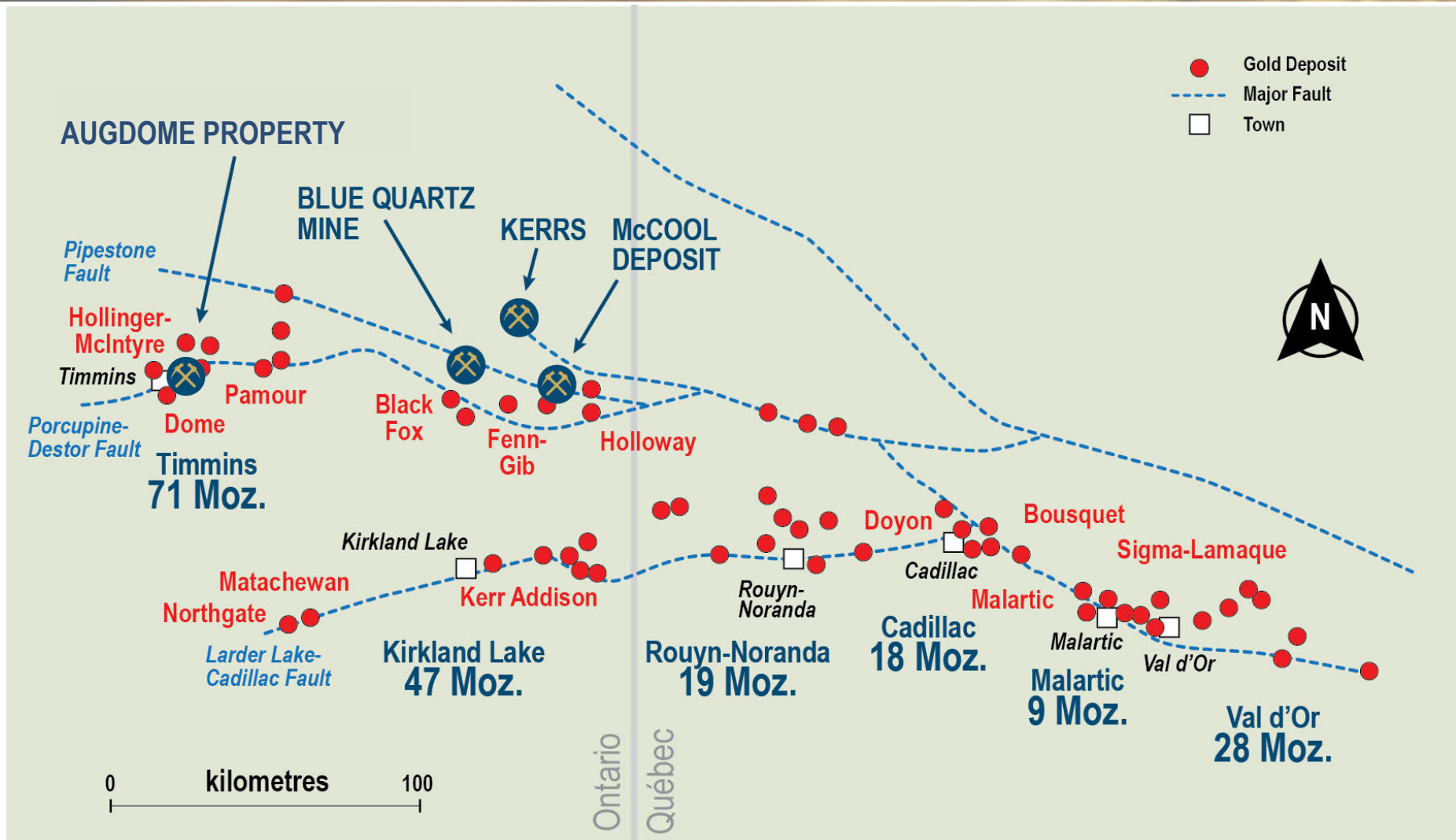
JUNE 2021

**McLaren**  
RESOURCES

# Highlights

- Timmins is the most productive gold district in Canada
- Newmont operates three mines in Timmins
- McLaren properties neighbor high value gold mines
- Properties contain established gold mineralized zones with significant exploration potential
- Highly experienced exploration management and technical team focused on discovery

# PROPERTIES LOCATED ON THE ABITIBI GREENSTONE BELT





# Board of Directors

- **John Heslop, *Executive Chairman***

Mr. Heslop is a professional geologist with over 40 years in the natural resource sector. Mr. Heslop held the position of Exploration Manager, Central Canada for Texasgulf Inc. from 1974 to 1982, Vice-President, Project Development for Kidd Creek Mines Ltd. from 1982 and Director of Exploration for Falconbridge Limited from 1986 until 1987. He was President and CEO and a Director of Thundermin Resources from 1987 until 2016. Since 2016 he has been Vice-Chairman of West Red Lake Gold Mines.

- **Andrew Ramcharan, *Director***

Dr. Ramcharan is a mining engineer with 20 years experience in the industry. At Dynatec he worked on Goldcorp's Red Lake Mine Project. More recently he worked for five years in Mergers & Acquisitions at IAMGOLD

- **John Holko, *Director***

Mr. Holko is a petroleum engineer, and the President of Lenape Resources based in Batavia, New York. Mr. Holko has over 35 years experience in the oil and gas industry.

- **Paul Crath, *Director***

Mr. Crath is President and CEO of Highvista Gold Inc. Mr. Crath has a Law Degree from Osgoode Hall.



# Management Team

- **John Heslop, *Executive Chairman***

Mr Heslop has four decades of experience in exploration and mine development. Mr Heslop initiated production of the Hoyle Pond Mine in Timmins and subsequently became President & CEO of a mineral exploration and development company listed on the Toronto stock Exchange which was acquired in 2016.

- **Radovan Danilovsky, *President***

Mr. Danilovsky, MSc, MS, CIM, has over ten years of experience in the mining sector. From 2011 to 2016 he served as mining analyst for Accilent Capital, a mining investment firm. Before joining Accilent Capital, Mr. Danilovsky worked as a geophysical consultant for the mining exploration industry.

- **David McDonald, *Chief Financial Officer***

Mr. McDonald, C.A. has worked as the CFO of various public and private junior resource companies.

- **Ken Guy, *Exploration Manager***

Mr. Guy, P.Geo. Has over 30 years of exploration experience in Ontario Canada. Ken has worked as an Exploration Manager with BP Selco, Getty Metals, Cypress Minerals and Lexam VG Gold.

- **Nadim Wakeam, *Corporate Secretary***

Mr. Wakeam, LLB, MBA, corporate securities lawyer, is a partner in a major Toronto law firm specializing in serving public company resource industry clients.

# World Class Gold District



# McLaren Properties

- **McCool**

- Mineral Lease acquired 100 percent from Newmont in exchange for providing the Augdome option to Newmont
- 275 ha (679 acres) - 1 Lease consisting of Surface and Mining Leased Lands

- **Kerrs**

- Mineral Leases acquired 100 percent from Newmont in exchange for providing the Augdome option to Newmont
- 775 ha (1915 acres) - 5 Leases consisting of Surface and Mining Leased Lands

- **Blue Quartz**

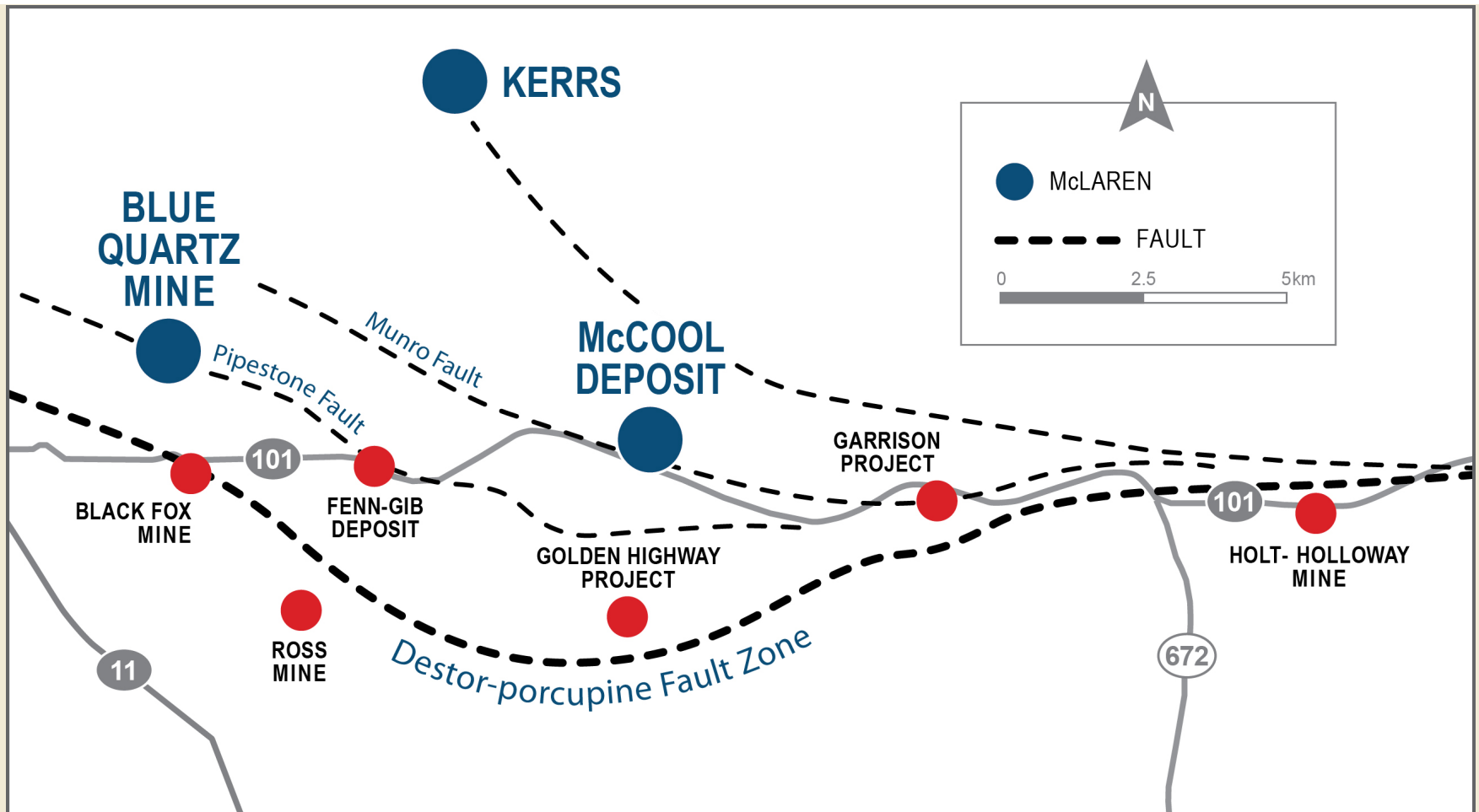
- 25 patented claims owned 100 percent by McLaren
- 8 crown claims owned 100 percent by McLaren
- 640 ha (1,600 acres)

- **Augdome**

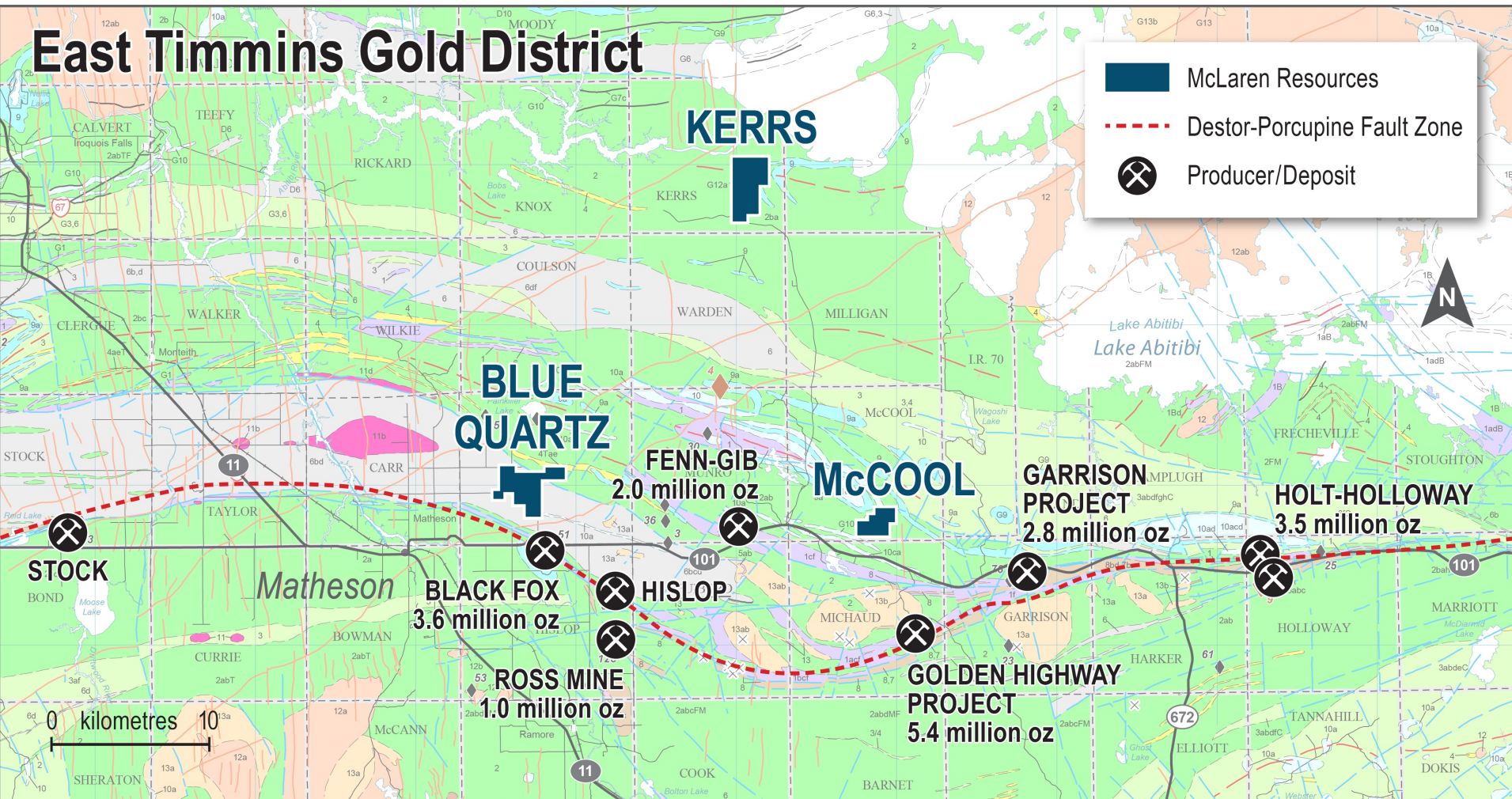
- 22 patented claims optioned to Newmont



# McCool, Kerrs and Blue Quartz Properties



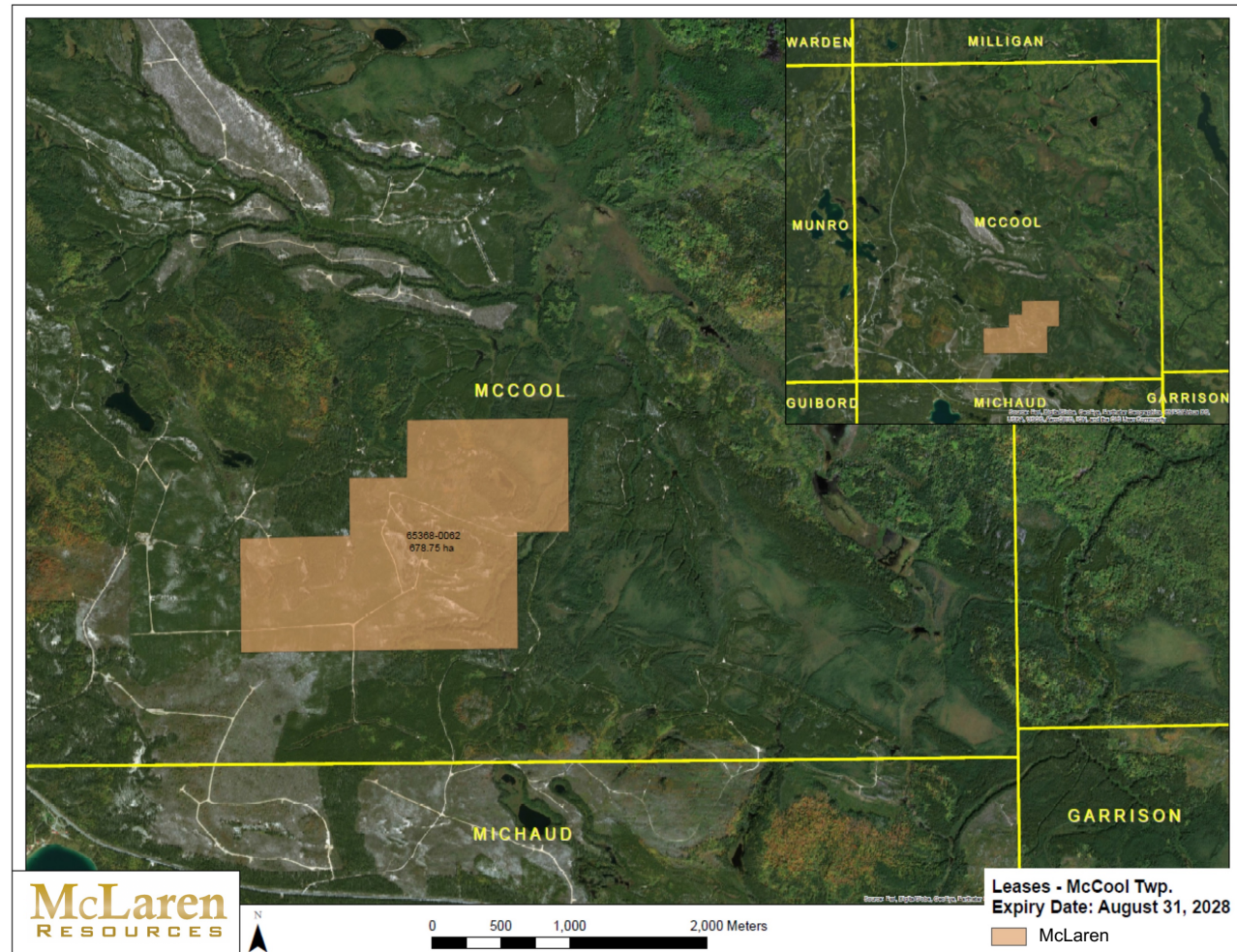
# McCool, Kerrs and Blue Quartz Properties





# McCool Property – Good Exploration Potential

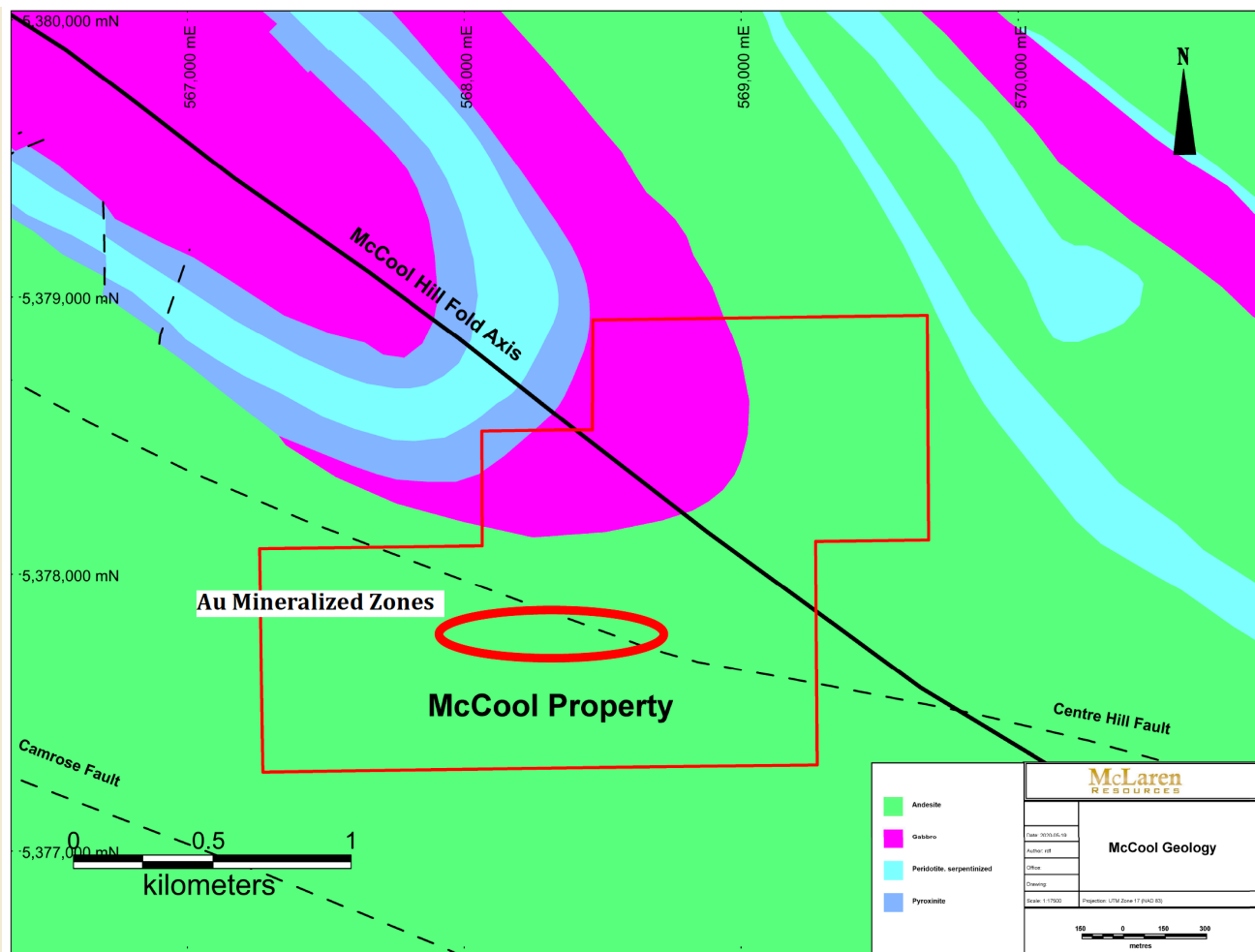
- McLaren acquired the property from Newmont
- 275-hectare Mining Lease (679 acres)
- 100% interest
- Gold-bearing structures established on property



- Back Fox Mine is 15km to the west and the Holt Mine Complex is 20 km to the east
- Neighbours Fenn Gib Deposit, Golden Highway Project and Garrison Project

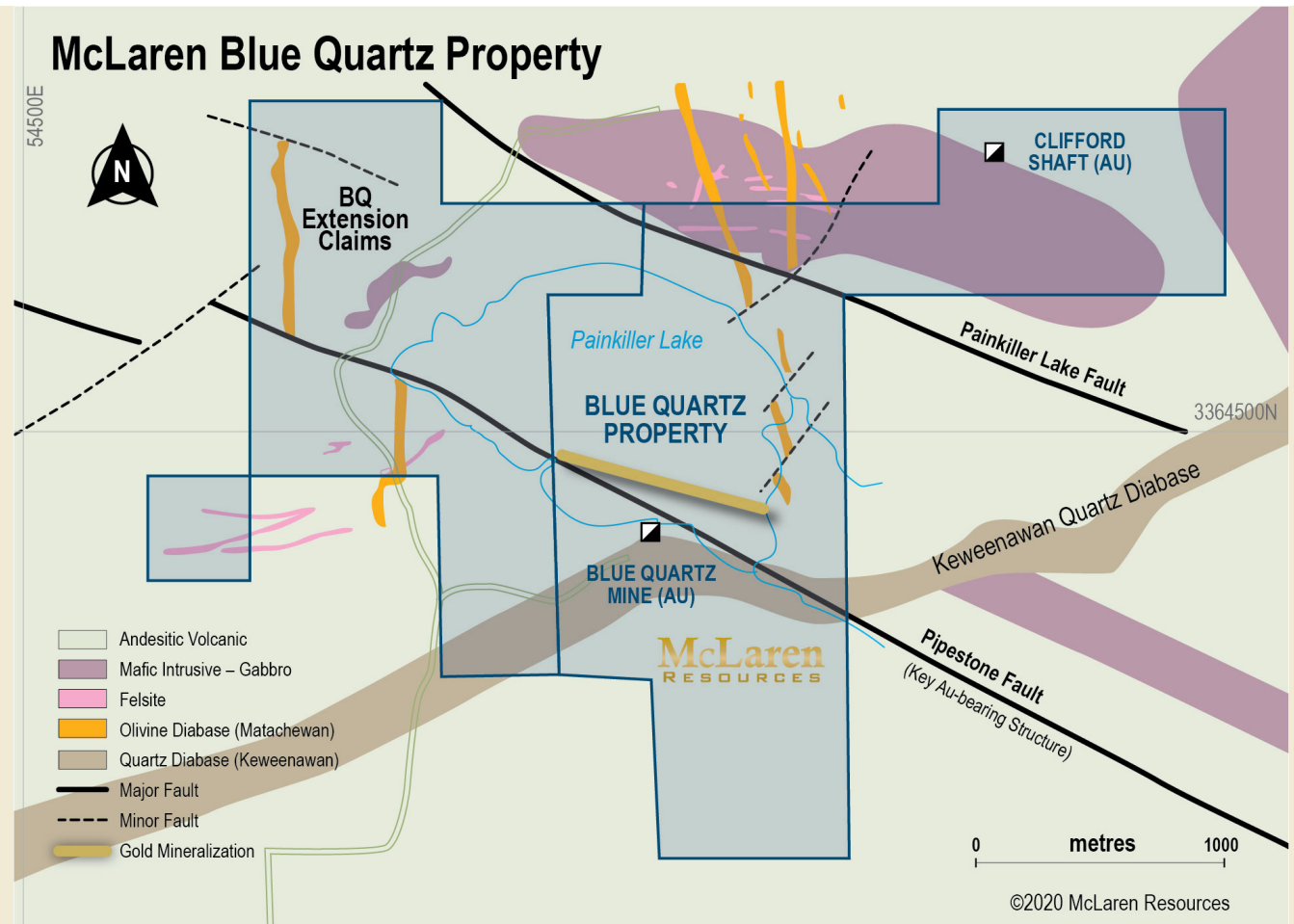


# McCool Exploration Target



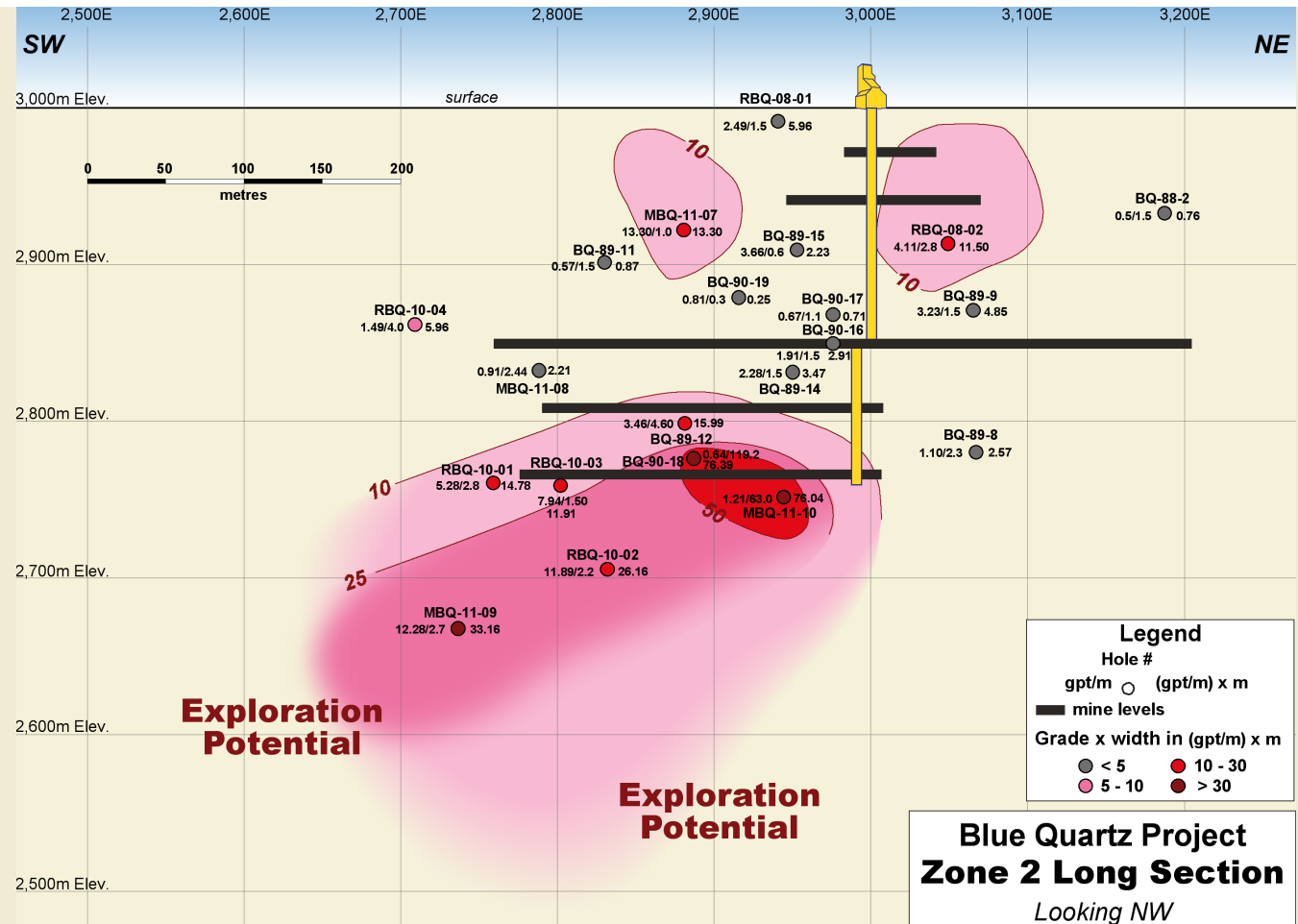
# Blue Quartz

- Located on favourable geology for gold discovery
- Near Destor Porcupine Fault regional geological structure associated with significant Timmins gold deposits
- Blue Quartz property 100% owned



# Blue Quartz - Potential for Discovery

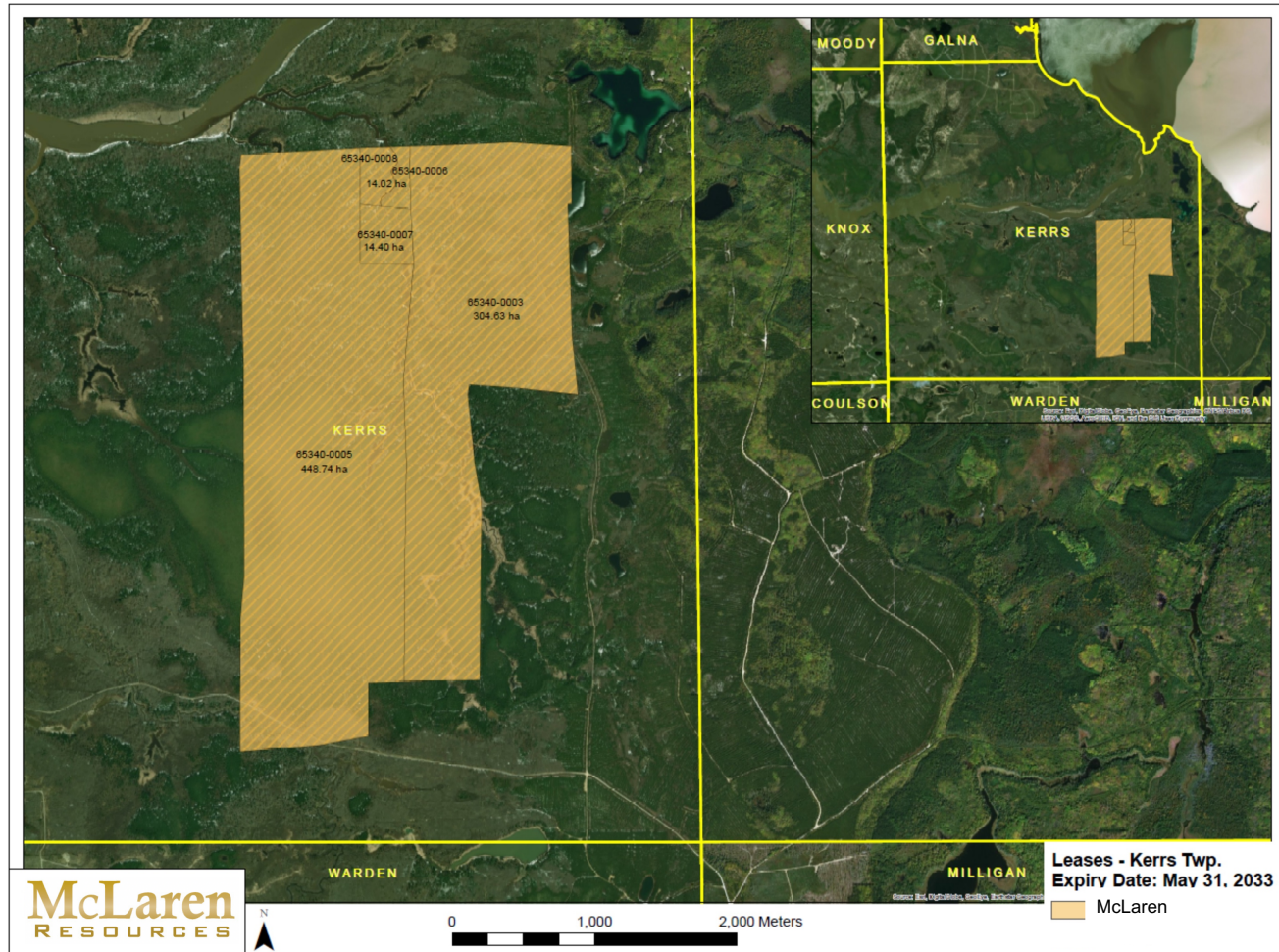
- Drilling has expanded the gold mineralization to depth and along strike
- Potential to further expand gold mineralization
- Historical high-grade gold production



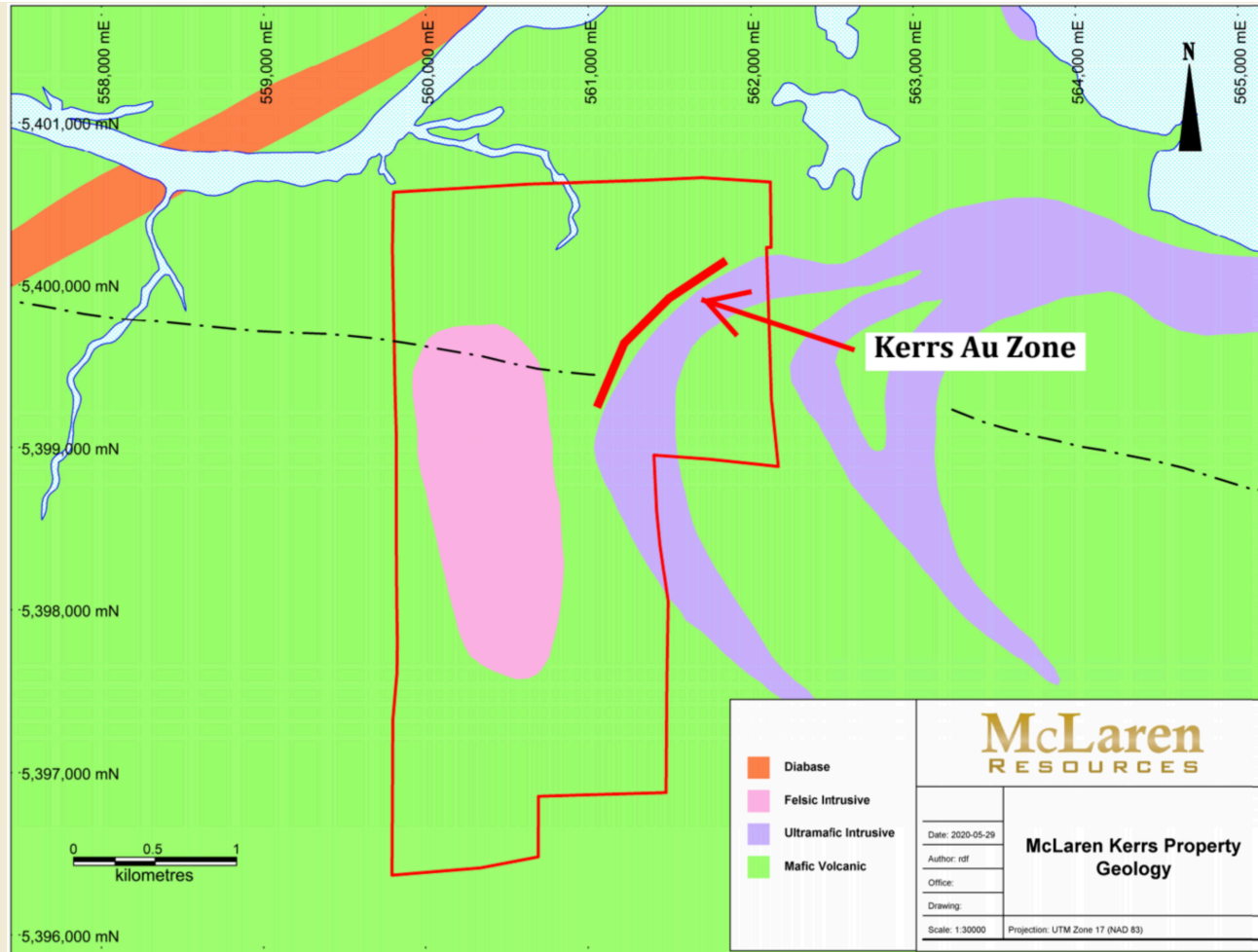


# Kerrs Property

- McLaren acquired the property from Newmont
- 775-hectare Mining Lease (1,915 acres)
- 100% interest
- Known gold zones



# Kerrs Property





# Augdome Property – Optioned to Newmont



Newmont-owned Dome Mine  
adjacent to the Augdome  
property

- MCL Gold Zones are Adjacent to the 12 Million Oz Dome Mine
- Dome Mine is under planned Century Project expansion



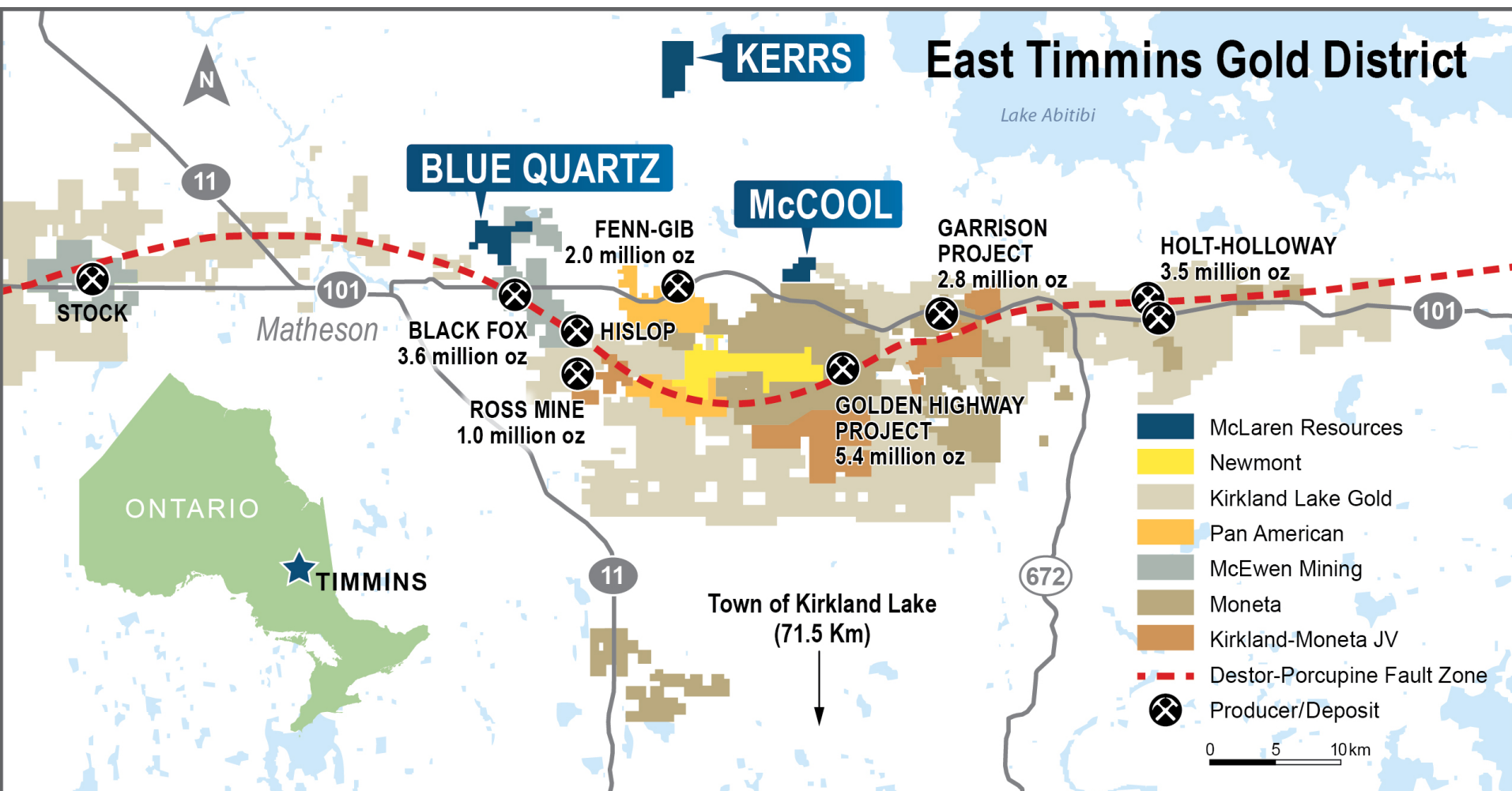
# Corporate Structure

- Trades on CSE (MCL), Frankfurt (3ML) and OTC (MLRNF)
- 74,265,511 shares issued and outstanding
- Options outstanding: 3,200,000 at \$0.10-\$0.15
- Warrants outstanding: 11,357,000 at \$0.10-\$0.15
- 88,822,511 on fully diluted basis

# Strategy

- McLaren management is committed to building company value by skillfully investing funds in the exploration and development of its Timmins gold projects.
- Management creates value through successful exploration by finding gold ounces at an effective cost and by exploring targets with good potential.

# World Class Gold District





**McLaren Resources Inc.**

44 Victoria Street, Suite 1616

Toronto, Ontario M5C 1Y2

(416) 203-6784

[mclarenresources.com](http://mclarenresources.com)