

# PPFP023

## CMI PVI 300 TPH

### Portable Parallel Flow Drum Plant



- CMI PVM300 drum
  - parallel flow
  - Starjet burner
- CMI SEB
- Astec truck scale under it
  - 1992 model
  - 100,000 lbs cap
- 3 bin CMI cold feeds
  - 2002 possibly
- Axles removed, placed on I beam skids. This looks like it could fit on a double drop, or axles can be put back on possibly
- Portable scale conveyor to drum
- Skidded horizontal AC tank
- Terex/CMI control house and MCC
  - Martin blend controls
  - standard CMI design single load dividable system
  - Allen Brandley standard CMI MCC
- Single deck skidded Smico scalping screen
- Small vertical fuel tank
  - 8k gallons capacity estimated
- Heatec hot oil heater with new panel
- CMI Reverse Aire baghouse
- Overhead views show 3 rotor design, assuming this is a 318P Model

- All equipment subject to prior sale.
- RBS strives to ensure the accuracy of all listings, but all listings are "as-is, where-is," with no implied warranty.
- All buyers are encouraged to inspect equipment personally to verify accuracy.
- All information contained in this listing sheet is confidential. It is the property of RBS and is not to be shared.
- Road Builders Supply, LLC accepts no liability for the accuracy of the above listing.

Sales:

1950 East Greyhound pass #18  
Toll Free: 866-249-6335

[www.RoadBuildersSupply.com](http://www.RoadBuildersSupply.com)



NATIONAL ASPHALT  
PAVEMENT ASSOCIATION

Call us for Facility painting, new plant equipment, used plant equipment, plant service, and Parts!

# PPFP023

## CMI PVI 300 TPH

### Portable Parallel Flow Drum Plant



- CMI PVM300 drum
  - parallel flow
  - Starjet burner

- CMI SEB
- Astec truck scale under it
  - 1992 model
  - 100,000 lbs cap



- 3 bin CMI cold feeds
- Axles removed, placed on I beam skids. This looks like it could fit on a double drop, or axles can be put back on possibly
- Portable scale conveyor to drum

- All equipment subject to prior sale.
- RBS strives to ensure the accuracy of all listings, but all listings are "as-is, where-is," with no implied warranty.
- All buyers are encouraged to inspect equipment personally to verify accuracy.
- All information contained in this listing sheet is confidential. It is the property of RBS and is not to be shared.
- Road Builders Supply, LLC accepts no liability for the accuracy of the above listing.

Sales:

1950 East Greyhound pass #18  
Toll Free: 866-249-6335

[www.RoadBuildersSupply.com](http://www.RoadBuildersSupply.com)



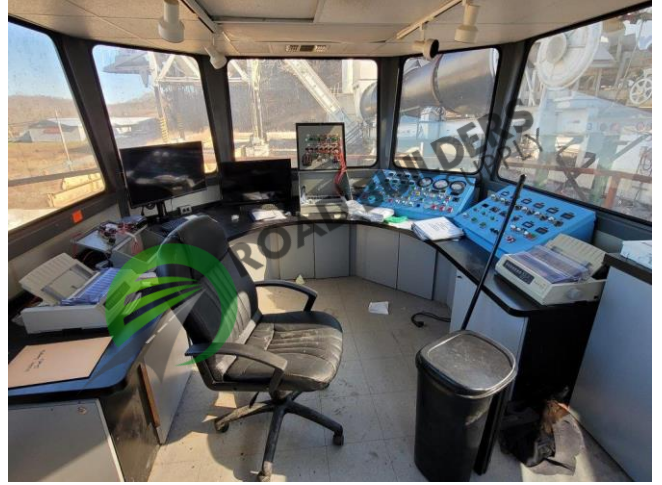
Call us for Facility painting, new plant equipment, used plant equipment, plant service, and Parts!

# PPFP023

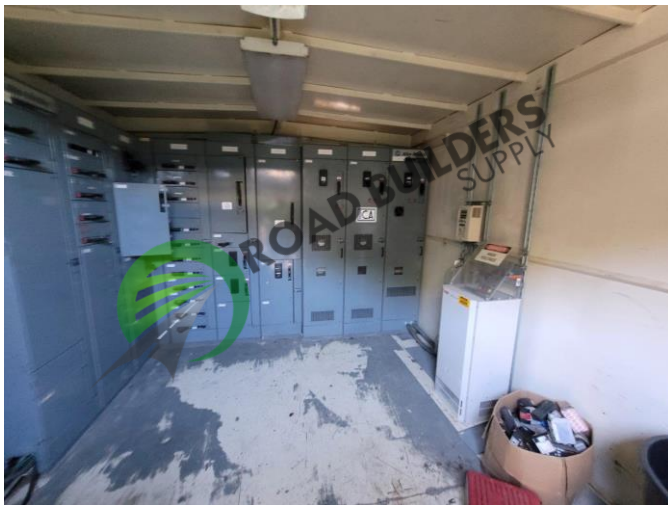
## CMI PVI 300 TPH

### Portable Parallel Flow

### Drum Plant



- Terex/CMI control house and MCC
  - Martin blend controls
  - standard CMI design single load dividable system
  - Allen Brandley standard CMI MCC



- Single deck skidded Smico scalping screen



- All equipment subject to prior sale.
- RBS strives to ensure the accuracy of all listings, but all listings are "as-is, where-is," with no implied warranty.
- All buyers are encouraged to inspect equipment personally to verify accuracy.
- All information contained in this listing sheet is confidential. It is the property of RBS and is not to be shared.
- Road Builders Supply, LLC accepts no liability for the accuracy of the above listing.

Sales:

1950 East Greyhound pass #18  
Toll Free: 866-249-6335

[www.RoadBuildersSupply.com](http://www.RoadBuildersSupply.com)



# PPFP023

## CMI PVI 300 TPH

### Portable Parallel Flow Drum Plant



- CMI Reverse Aire baghouse
- Overhead views show 3 rotor design, assuming this is a 318P Model



- All equipment subject to prior sale.
- RBS strives to ensure the accuracy of all listings, but all listings are "as-is, where-is," with no implied warranty.
- All buyers are encouraged to inspect equipment personally to verify accuracy.
- All information contained in this listing sheet is confidential. It is the property of RBS and is not to be shared.
- Road Builders Supply, LLC accepts no liability for the accuracy of the above listing.

Sales:

1950 East Greyhound pass #18  
Toll Free: 866-249-6335

[www.RoadBuildersSupply.com](http://www.RoadBuildersSupply.com)



NATIONAL ASPHALT  
PAVEMENT ASSOCIATION

Call us for Facility painting, new plant equipment, used plant equipment, plant service, and Parts!