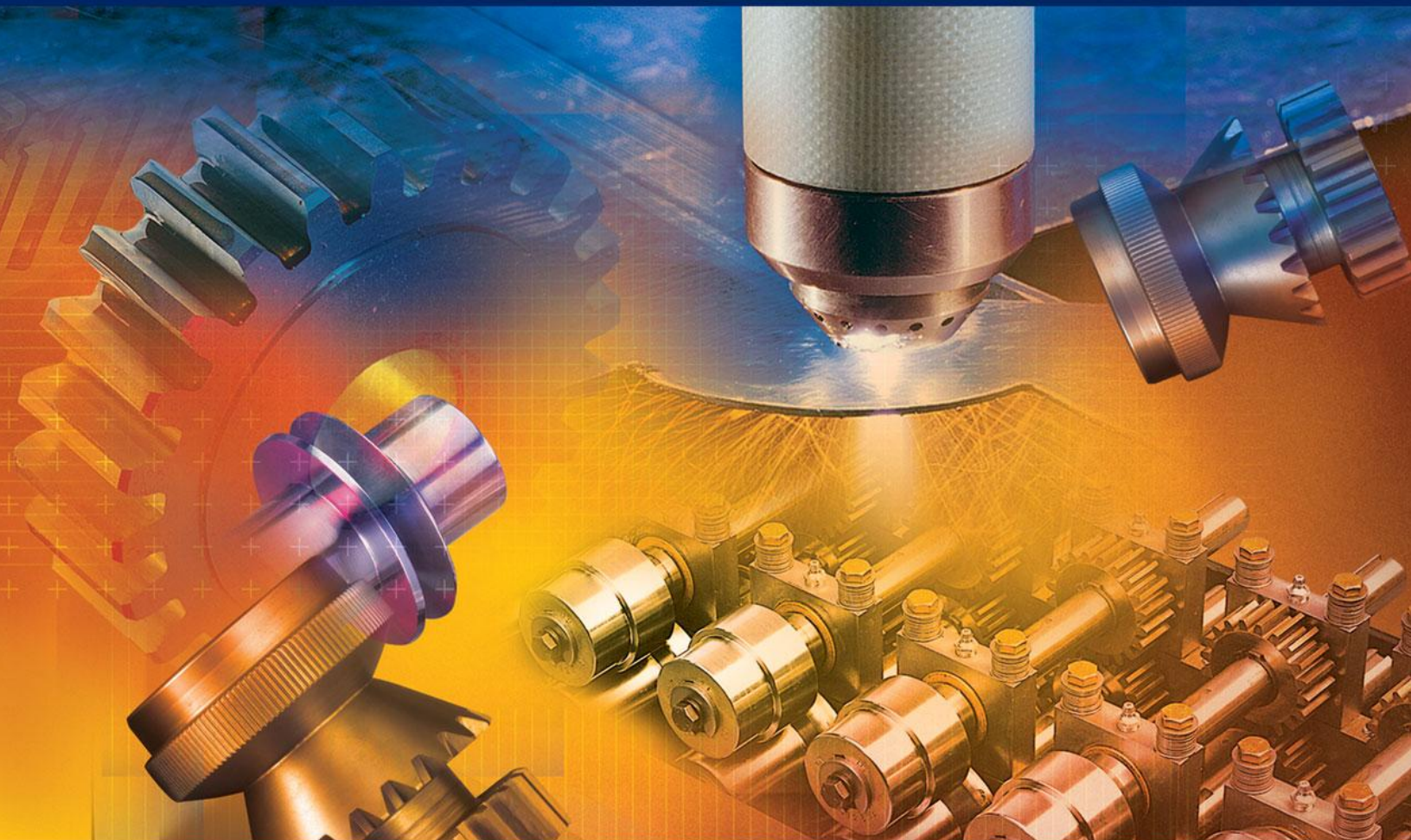


**LOCKFORMER**



INSTRUCTIONS &  
PARTS DIAGRAM  
**Easy Edger**

# LOCKFORMER

## Easy Edger Instructions and Parts Diagram





### **WARNING**

**THIS EQUIPMENT IS DESIGNED TO BE OPERATED WITH ALL COVERS SECURED IN PLACE. OPERATION WITHOUT THESE SAFEGUARDS MAY RESULT IN CONDITIONS WHICH ARE HAZARDOUS TO THE OPERATOR AND OBSERVERS.**

## **SAFETY GUIDELINES**

Before operating the machine, study and follow the safety precautions in this section. These precautions are intended to prevent injury to you and your fellow workers. They cannot, however, cover all possible situations. Therefore, **EXERCISE EXTREME CAUTION** and use **COMMON SENSE** before performing any procedure or operation.

### **Safety Precautions BEFORE starting the machine(s)**

- Only one person should control the machine(s). Never allow anyone to operate the controls while you are operating or working on this equipment. In addition to disconnecting power **always use lock outs and tagouts** to prevent accidental start-up when performing maintenance procedures.
- Keep your hands away from internal workings of the machinery when starting, running or stopping.
- Keep your work area clean. Remove all scrap, oil spills, rags, tools and other loose items that could cause you to slip, trip and fall.
- When cleaning the machine or any of its components, do not use toxic or flammable substances. Do not perform any cleaning while the equipment is running.
- Never override or disable any safety switch or safety interlock.
- If so equipped, make sure that hydraulic and pneumatic pressures are at specified levels before operating this equipment.
- **Do not operate the rollformer unless all covers and guards are in place.**
- Be sure that this Instruction Manual is kept near the machine so the operator can refer to it when necessary.
- Keep this equipment properly maintained.
- Always turn off power to the machine(s) at the main disconnect before performing any maintenance or adjustments so accidental start-up or electrocution cannot occur.





## Safety precautions WHILE operating the machine(s)

- Never leave the work area while the equipment is in operation.
- Never leave the machine unattended while it is under power or in operation.
- Always be alert while operating machinery.
- Be alert for loose, worn or broken parts. Do not attempt to operate any machinery with such parts present or if the machinery is making unusual noises or actions.
- Avoid skin contact, prolonged breathing, or eye exposure to any stock lubrication fluid being used.
- Be aware of the locations of the **Power Off** or **Emergency Stop** button in case of an emergency.
- **Be sure all guards and covers are in place.**
- Continually observe the rollforming process and related equipment. If any unusual condition develops, immediately stop and inspect the machine.
- Protect yourself! Wear safety glasses. Do not wear loose clothing, neckties, or jewelry. If long sleeves must be worn, avoid loose cuffs and buttons. Tie back and contain long hair.
- Never adjust any roll feature or perform work near the rolls, gears or power take off while they are running.

### General

If any pneumatic or hydraulic feature is used, disconnect the main supply and exhaust pressure and bleed the lines to prevent cycling on retained pressure.

Always shut off the power at the main disconnect switch before entering the electrical control box.

Do not use compressed air to clean the machines. Air pressure may drive dirt and small chip into the machine(s) bearing surfaces or cause bodily injury.

#### IMPORTANT

The information contained herein is to be use as a general guide only. For further safety information obtain and read the ANSI bulletin entitled:

ANSI B11.12-1996 Rollforming and Roll-Bending Machines safety. Requirements for Construction, Care and Use.

CONTACT: American National Standards Institute  
11 West 42nd Street. New York, New York 10036



### **CAUTION**

To provide clarity to points in question the illustrations and photos appearing in this manual are shown with covers and guards removed.  
**NEVER OPERATE THIS EQUIPMENT UNLESS ALL COVERS AND GUARDS ARE IN PLACE.**



## **SAFETY GUIDELINES**

You are **NOT** ready to operate this equipment if you have not read and understood all of the safety information in this manual.



### **WARNING**

- Do not wear loose clothing, neckties, improper gloves, or jewelry while operating this machine. If long sleeves must be worn, avoid loose cuffs or buttons, Tie back or contain long hair.
- Wear proper gloves to prevent lacerations caused by sharp edges of stock as it travels through the forming operation.
- Never operate this equipment unless all covers and guards are properly installed.
- Be alert for loose, worn, or broken parts. Never operate this equipment unless it is in good working condition.
- As the stock enters the guides and feeds into the rolls, a pinch point is created as the stock advances. Keep hands clear of area and all pinch points.
- Always disconnect the main power supply power and install lock outs using a lockout / tagout procedure when making adjustments or repairs.
- When transporting, take into consideration that the machine is top heavy and may suddenly tip over.
- The machine is designed for fixed installations and is not intended for portability.

**Remember that the information contained in this manual is only a portion of an adequate training program. It must be coupled with specific instructions for your application along with full information of national and local safety regulations that may apply.**

### **WARRANTY**

Our warranty on the products we manufacture is limited to repair or replacement without charge, of any part found to be defective in materials or workmanship. This warranty is for a period of one year (unless otherwise specified) from the date of shipment from our factory, for all mechanical features of the machine except purchased components that carry the warranty of the original manufacturer.

This warranty is conditioned on proper installation, maintenance and use of the equipment. The warranty will be void if the equipment is subjected to misuse or abused or if used beyond the standards in this manual, including material dimensions and gauge.

Warranty parts and components will be shipped freight collect from FORMTEK. If the defective part has not been returned to FORMTEK within 15 working days after receiving the replacement part, your company will be responsible for the cost of replacement.

The warranty provided in this clause is in lieu of all other warranties, express or implied, arising by law or otherwise, including the implied warranties of merchantability and fitness for a particular purpose which are hereby disclaimed by FORMTEK MACHINERY and excluded from this agreement. This warranty shall not be modified for any reason. In no event shall FORMTEK MACHINERY be liable for consequential or incidental damages, including the cost of assembly or disassembly, lost production or personal injury.

Replacement and maintenance parts must be purchased from FORMTEK or the component original equipment manufacturer. Use of other parts may result in unsafe operation or failure of the machinery. If there is a question to the suitability of a part proper personnel, FORMTEK should be consulted.

The information in this document has been reviewed and is believed to be complete and accurate. No responsibility is assumed for minor inaccuracies or content not addressed in this manual. Furthermore, FORMTEK reserves the right to make changes to any products herein, at any time, to improve reliability, function, or design. FORMTEK does not assume any liabilities arising out of any use of any product described herein, Nor does it convey any license under its trade secrets or patent rights nor the rights of others.

# Instructions



The Easy Edger is used to form the curved and radius 90° Male flange seam edges of sheet metal. The handle at the top of the unit is used to set the depth of the forming roll. Rotating the large handle to the side turns the forming rolls.

## **MOUNTING UNIT**

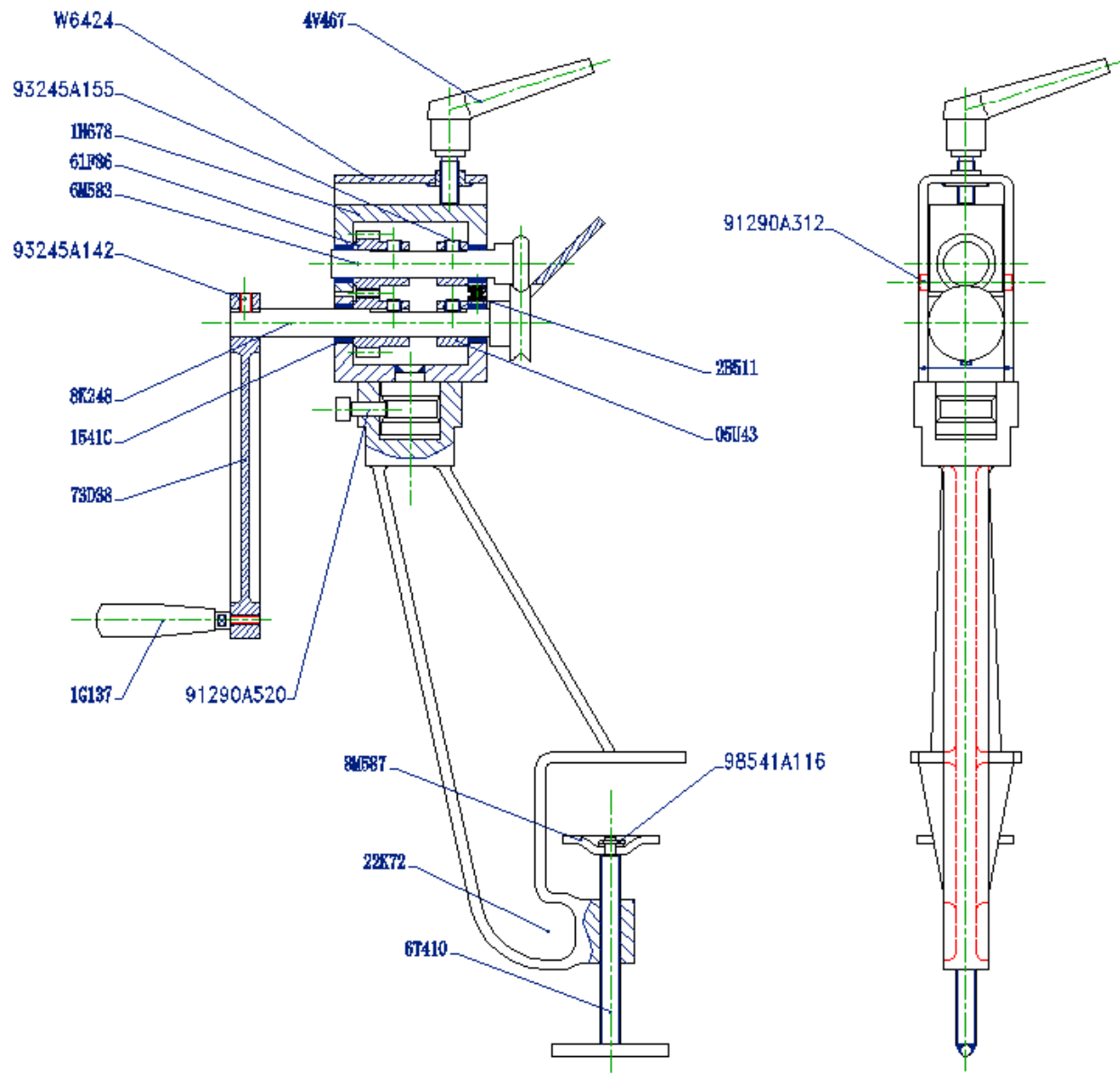
Safe operation of the Easy Edger requires that it be clamped to a sturdy bench top. The bottom clamping device is designed for this purpose. Before operating the Easy Edger it is the responsibility of the operator to make sure that the bench mounting is sturdy, that the clamp is in good working order, and that the clamp is tight and secure to the mounting surface.

## **CAPACITY**

Maximum 1.2mm thickness (18 Gauge) mild steel and Galvanized steel.

## **OPERATION**

After setting the depth of forming rolls the operator will hold the material and feed it into the rolls while turning the handle. It is advised that the inexperienced operator test several small pieces before attempting to form production parts.



EASY EDGER MANUAL  
09-14-2005

## Easy Edger Part List

| Item | Part #    | QTY | Description English         |
|------|-----------|-----|-----------------------------|
| 1    | A9285     | 1   | EASY EDGER                  |
| 2    | 6T410     | 1   | SCREW                       |
| 3    | 22K72     | 1   | BASE                        |
| 4    | 8M587     | 1   | WASHER                      |
| 5    | 91290A520 | 1   | SOCKET HEAD CAPSCREW M10X25 |
| 6    | 1G137     | 1   | HANDEL                      |
| 7    | 73D38     | 1   | HANDEL POLE                 |
| 8    | 1541C     | 4   | SPACER                      |
| 9    | 8K248     | 1   | BOTTOM ROLL                 |
| 10   | 93245A142 | 1   | SOCKET SET SCREW M8 X 12    |
| 11   | 6M583     | 1   | TOP ROLL                    |
| 12   | 61F86     | 2   | GEAR                        |
| 13   | 1H678     | 1   | TOP HOUSE                   |
| 14   | 93245A155 | 4   | SOCKET SET SCREW M10X10     |
| 15   | W6424     | 1   | HOUSE                       |
| 16   | 4V467     | 1   | HANDLE M12X32               |
| 17   | 91290A312 | 2   | SOCKET HEAD CAPSCREW M6X8   |
| 18   | 2B511     | 1   | SPRING                      |
| 19   | 05U43     | 2   | SPACER                      |
| 20   | 98541A116 | 1   | RETAINING RING              |



# LOCKFORMER

The Lockformer® Company  
711 Ogden Avenue  
Lisle, Illinois 60532-1399

Phone: (630) 964-8000  
Fax: (630) 964-5685  
[www.lockformer.com](http://www.lockformer.com)

Due to continuous improvements, Lockformer® reserves the right to modify the product design and specifications contained herein without notice. Please contact your Lockformer® sales representative for the most current specification information.

Use, publication or sale of any images or content without the expressed written consent of Lockformer® is strictly prohibited.

© Copyright 2008. All rights reserved by Lockformer®