

CHITTENDEN COUNTY VERMONT Behavioral Health SNAPSHOT



BINGE DRINKERS IN CHITTENDEN COUNTY INCREASED FROM 12.8% IN 2008 TO 17.7% IN 2012.

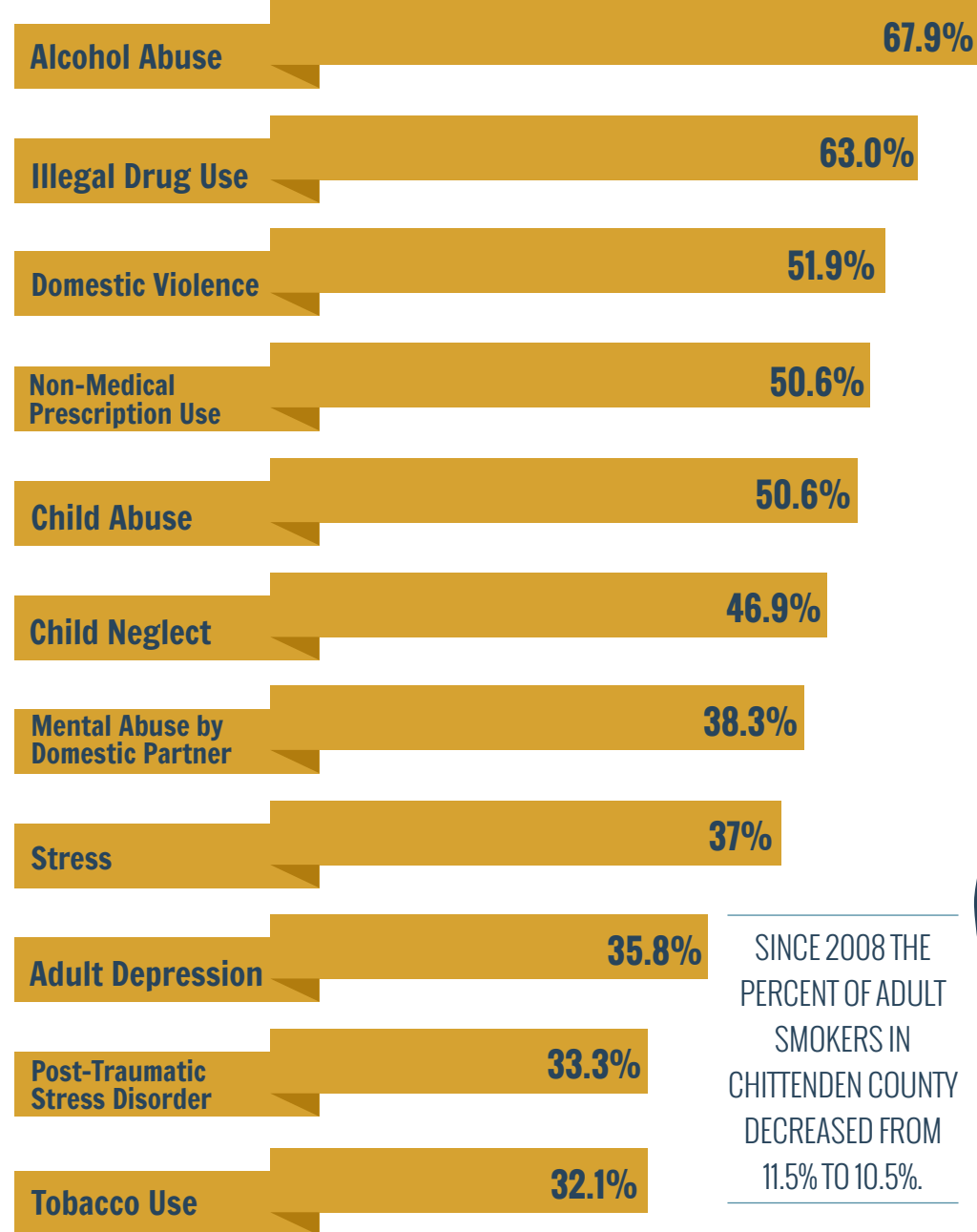
4.9%

158,504
Chittenden County Population in 2012

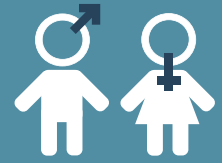


TOP TEN CHITTENDEN COUNTY HEALTH PRIORITIES

As selected in a survey by local community leaders from health services, social services, community organizations, and elected/government officials.



SINCE 2008 THE PERCENT OF ADULT SMOKERS IN CHITTENDEN COUNTY DECREASED FROM 11.5% TO 10.5%.



3.5
Cases of STDs for every 1,000 people in Chittenden County reported in 2012.



1.9
Incidents of domestic violence for every 1,000 people reported in Chittenden County in 2010.



21.5%
of Chittenden County adults were diagnosed with depression in 2012.

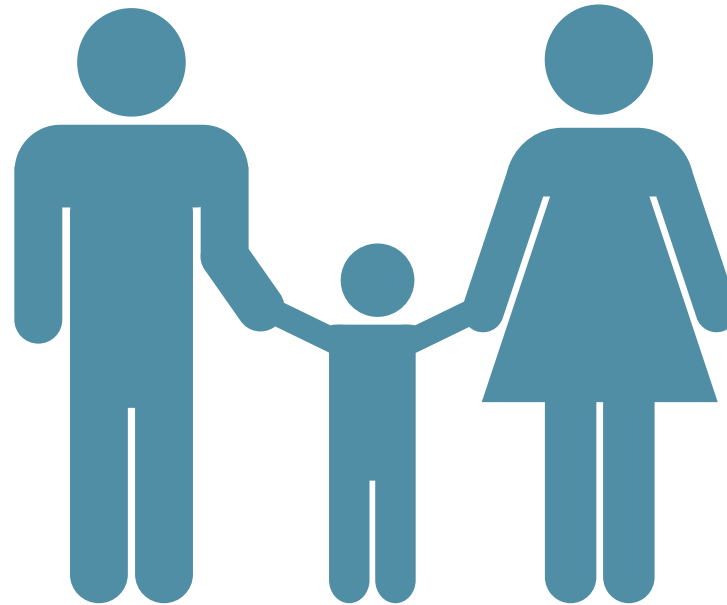
CHITTENDEN COUNTY VERMONT Behavioral Health SNAPSHOT

DOMESTIC VIOLENCE

CHITTENDEN COUNTY	VERMONT
1.9	1.8
Incidents of domestic violence for every 1,000 people reported in 2012.	Incidents of domestic violence for every 1,000 people reported in 2012.

ADULT DEPRESSION

CHITTENDEN COUNTY	VERMONT
21.5%	21.4%
of adults were diagnosed with depression in 2012.	of adults were diagnosed with depression in 2012.



BINGE DRINKERS

CHITTENDEN COUNTY	VERMONT
12.8% - 17.7%	12.4% - 13.5%
Binge drinkers increased from 12.8% in 2008 to 17.7% in 2012.	Binge drinkers increased from 12.4% in 2008 to 13.5% in 2012.

STDs

CHITTENDEN COUNTY	VERMONT
3.5	2.9
cases of STDs reported for every 1,000 residents in 2012.	cases of STDs reported for every 1,000 residents in 2012.

CHITTENDEN COUNTY BEHAVIORAL HEALTH RELATIVE TO VERMONT*†

BETTER THAN VERMONT AND GETTING BETTER

Drunk Driving Crashes
Suicide
Smoking
Teen Pregnancy

BETTER THAN VERMONT AND GETTING WORSE

Drunk Driving Deaths
Poor Mental Health Days
Depression among Medicare Recipients

WORSE THAN VERMONT AND GETTING BETTER

Domestic Violence

WORSE THAN VERMONT AND GETTING WORSE

Binge Drinking
Depression
Heavy Drinking
STDs

*Trend data about illegal drug use and non-medical prescription use were not available at the county and state levels to be included in this analysis.

†Chittenden County is the most populated county in the state, thus influencing state trends more than other counties.

This snapshot infographic summarizes data on top community behavioral health priorities in Chittenden County, Vermont as identified by its community leaders as of June 2014 and is a product of the CAPE Project (Community Assessment and Education to Promote Behavioral Health Planning and Evaluation). The information provided in this snapshot corresponds to an in depth community profile on Chittenden County, based on the 2014 CAPE survey as well as secondary sources such as County Health Rankings, National Highway Traffic Safety Administration, Vermont Highway Safety Alliance, Vermont Department of Health, Vermont Center for Justice Research, Centers for Medicare and Medicaid Services, and Behavioral Risk Factor Surveillance System. CAPE is dedicated to identifying and sharing best practices for benchmarking community behavioral health and is funded by the Department of Health and Human Services' Substance Abuse and Mental Health Services Administration (SAMHSA) and facilitated by the United States Department of Agriculture's National Institute of Food and Agriculture. Project partners include the Center for Rural Studies at the University of Vermont and the Chittenden Regional Planning Commission.

CAPE | Community Assessment and Education to Promote Behavioral Health Planning and Evaluation
VISIT US ON THE WEB healthbench.info