

## The only injection molded Trench Drain

- Non-corrosive High Density Polyethylene.
- 235 p.s.i industrial strength
- H-20 wheel load rating

Comes completely assembled. One unit. One price. No Extras.

## Snap-on End Caps

Simply remove an end cap, extend the trench to any length, and re-install the end cap.

## Cut to Size

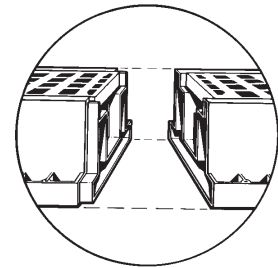
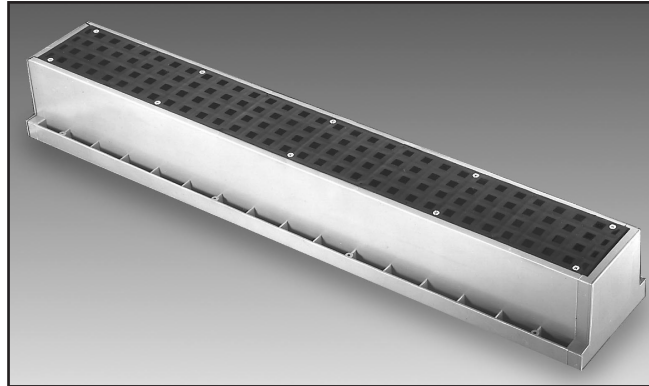
The trench may be field cut with a hand saw, and capped with a male end cap or a TR1-D4 End Drain

## Molded-In Ribs

Provide exceptional vertical compression strength - unequaled by other trench designs.

## Choice of 3 Drains

Three bottom drains are molded in. Knock-out membranes allow trench to be drained with 2" or 3" Schedule 40, or 4" SDR35 pipe.



## Interlocking Molded Ends

No need to remove the grate during installation. Simply snap the trenches together for a Tuf-Tite® free-flowing fit.

## ADA Compliant Grate

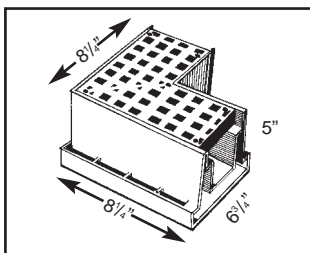
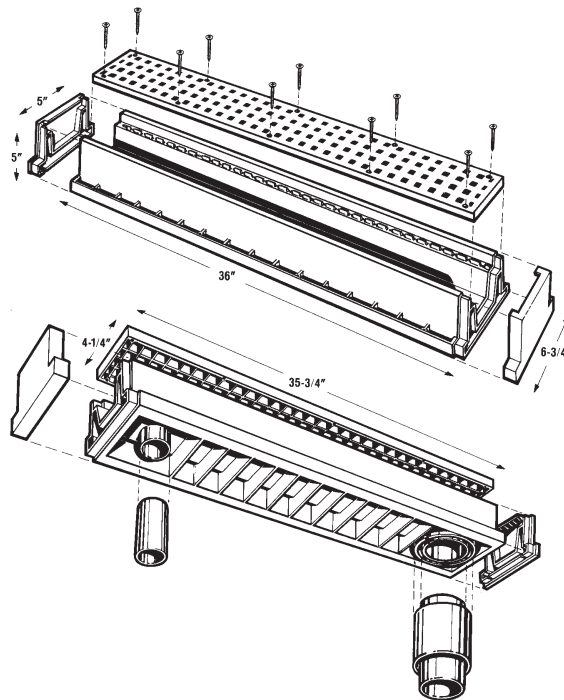
Safe, square 1/2" x 1/2" openings. Molded of specially formulated HDPE with no foam or fillers.

## Stainless Screws

The grate is held in place with 10 Type A-SmS screws.

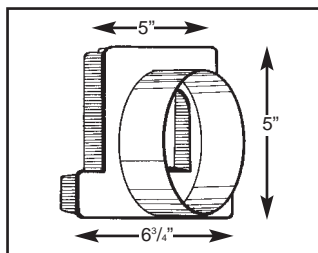
## Americans With Disabilities Act

*Regulation 4.5.4:* If gratings are located in walking surfaces, then they shall have spaces no greater than 1/2" (13mm) wide in one direction. If gratings have elongated openings, then they shall be placed so that the long dimension is perpendicular to the dominant direction of travel.



## TR1-90 Corner

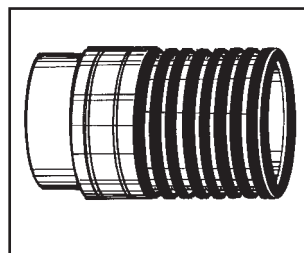
90° injection molded HDPE corner unit for Trench Drain. Molded interlocking ends for simple, snap-together installation. Comes assembled with grate and 6 Type A-SmS stainless screws. ADA compliant.



## Optional End Drain TR1-D4

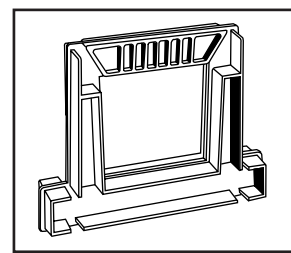
Male End Drain snaps on female end of Trench Drain. Accepts:

- 4" SDR35-3034 pipe
- 4" 2729 pipe
- 4" corrugated pipe when used with an MF-4 pipe connector



## MF-4 Pipe Connector

To connect 4" corrugated pipe to the bottom of Trench Drain or to the End Drain TR1-D4. Provides a watertight fit.



## Gender Changer

Changes male end to female (TR1-GCF) or female end to male (TR1-GCM)

