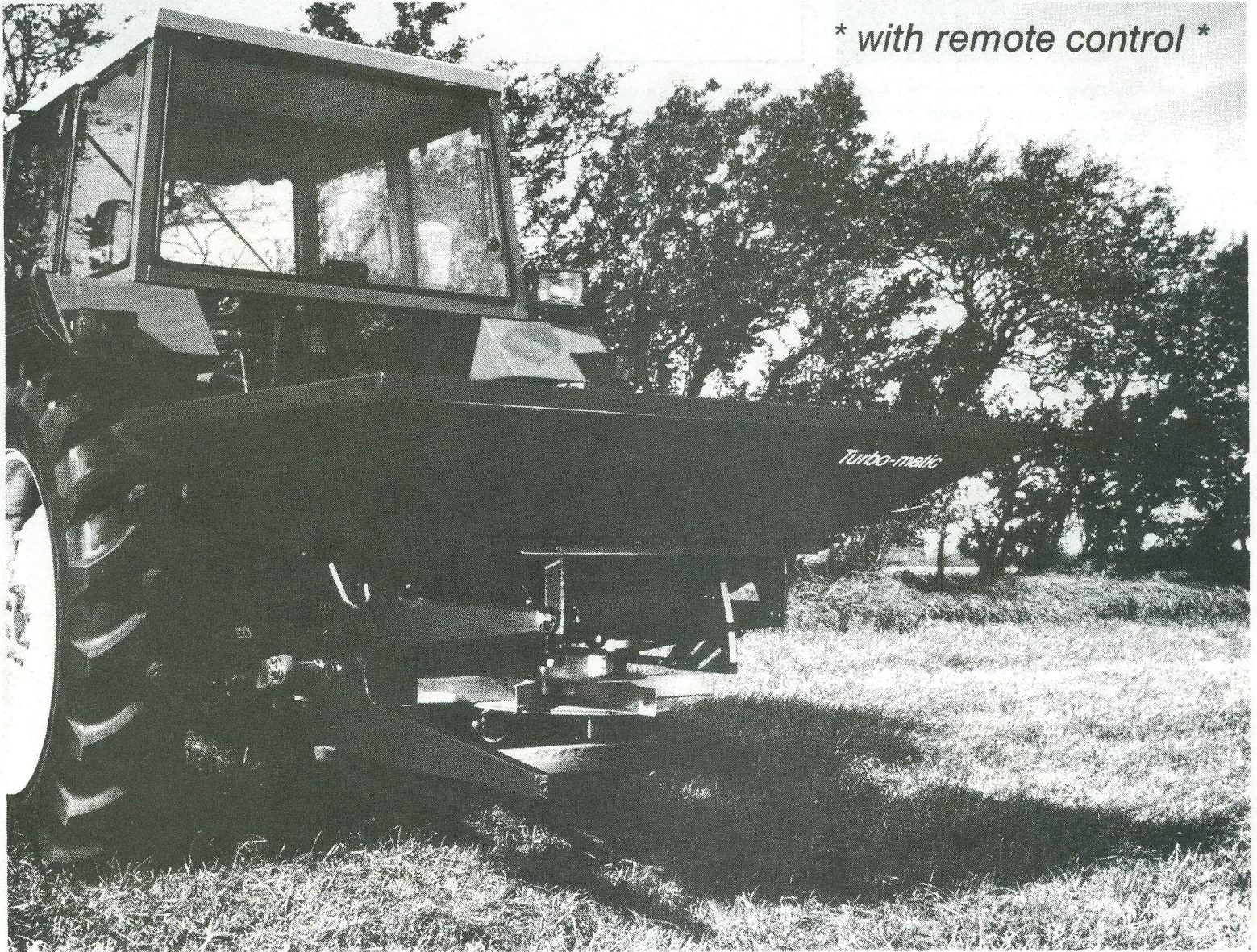


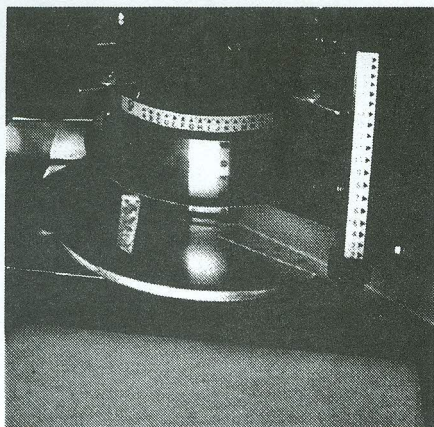
# HOWARD®

*Turbo-matic type TS 500-700-800-1200*

*\* with remote control \**

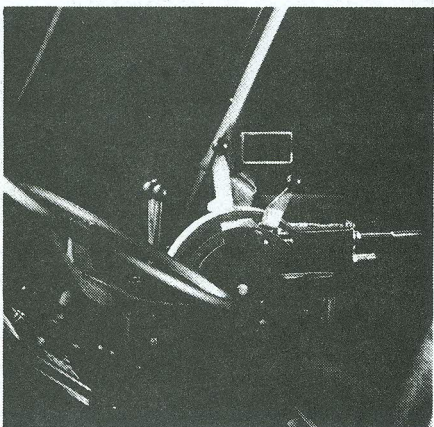


- ✓ Remote-control of distribution rate, left/right distribution and cut-off is standard equipment on the cable controlled model.
- ✓ Built-in precision. - Developed especially for tramline work.
- ✓ »Tailored« to 10/12 m spreading width with a possibility of easy adjustment to 15 m.
- ✓ Wide low-profile hopper for easy filling.
- ✓ Easily operated and maintained.
- ✓ Robust and functional design with dosing cup and spinning disc in rustless materials.
- ✓ The spreading width can be maintained irrespective of distribution rate and fertilizer type.
- ✓ 5 models available from 500 kg - 1200 kg capacities.

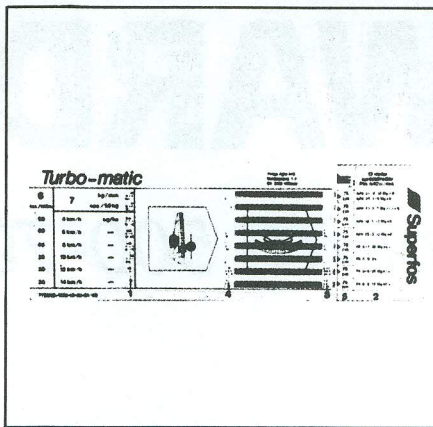


Precision is decisive when using tramlines. Therefore, Howard's Turbo-matic is made for 10, 12 and 15 m spreading width respectively, which is maintained irrespective of fertilizer rate and type.

Dosing cup and spinning disc are made of rustless materials. Easy cleaning due to simple disassembling of dosing cup and spinning disc.

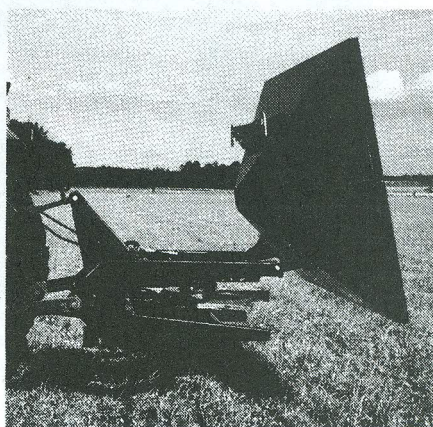


Remote cable operation allows left/right distribution and complete cut-off to be controlled from the tractor cab.

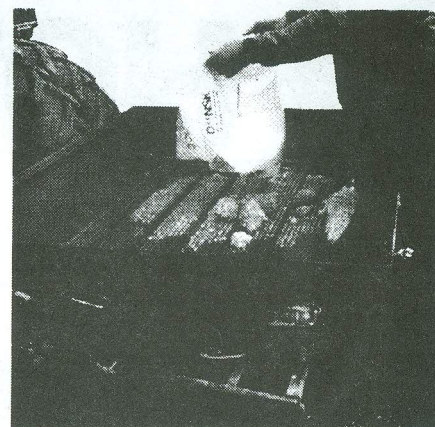


Each Turbo-matic is supplied with Thrige Agro's slide table, which simplifies correct adjustment for the fertilizer types generally used.

The table is based on experiments and tests carried out in Thrige Agro's own test laboratory.

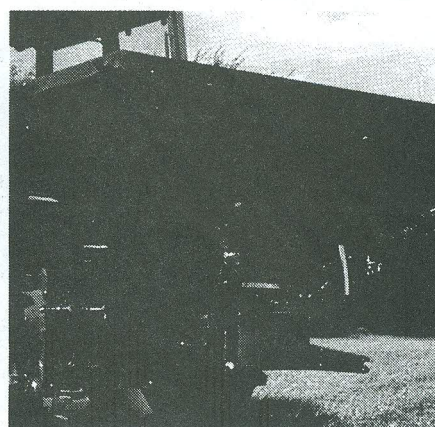


Tilting hopper gives full access for cleaning and for mounting of spreader.



The sieve removes lumps, stones etc. from the fertilizer and thus you avoid incorrect dosing and damage to the spreading unit.

A wide, low-profile hopper makes filling easy, whether carried out manually or mechanically.



From the wide range of optionals: cover protecting the fertilizer against humidity and dirt and application rate test equipment facilitating test of rate adjustment.

#### Technical specifications for Turbo-matic:

	TS 500	TS 700	TS 800	TS 1200
Length, cm	130	130	145	145
Width, cm	174	174	195	195
Filling height, cm	82	91	90	103
Weight, empty, kg	145	157	159	174
Contents l/approx. kg	483/500	684/700	709/800	1073/1200
Distribution rate kg/min.	10-200	10-200	10-200	10-200
Distribution rate control	Remote or manual			
Left/right distribution	Remote or manual			
Hitch pins (2 sets of holes)	Cat. I/II			
PTO revs./minute	540	540	540	540
Centre of gravity from lift eye, cm - cat. I/II	65,5/56,5	65,5/56,5	65,5/56,5	65,5/56,5
Required lifting capacity at lift eye, kg	8-900	10-1100	12-1300	17-1800

#### Standard equipment:

- Dosing device for 10 - 12 m distribution width
- PTO drive shaft
- Instruction manual + spreading tables (slide table) for 10 and 12 m distribution width

#### Standard equipment for TS cable model only:

- Remote control of rate and left/right distribution
- DS holder for handles in the tractor
- DS holder for handles on the machine

#### Optional equipment:

- Hopper extension for 700 kg capacity of TS 500
- Hopper extension for 1200 kg contents of TS 800
- Cover for TS 500 and TS 700
- Cover for TS 800 and TS 1200
- Sieve
- Trailer hitch
- Application rate test equipment - lifts the machine 30 cm
- Dosing cup 15 m + slide table
- PTO guard
- Lift bracket kit, 95 mm back
- Lift bracket kit, 150 mm up
- Lift bracket kit, 80 mm back, 150 mm up
- Extra lever bracket holder in tractor cab
- Wide-angle PTO drive shaft

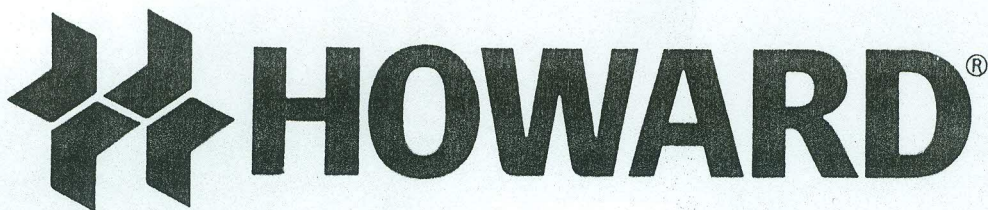
We reserve the right to make modifications.

Dealer:

**HOWARD / GUY MACHINERY**  
**P.O. BOX 5**  
**WOODSTOCK, IL 60098**  
**(815) 338-0600 • FAX 2525**



**HOWARD®**  
**Thrige Agro A/S**  
**693 Dane Street**  
**Woodstock, IL 60098**



## *Turbo-matic type TS 500-700-800-1200*

**HOWARD TURBO SPREADER**

GUY MACHINERY  
16219 US HWY 14 • P.O. BOX 5  
WOODSTOCK, IL 60098  
(815) 338-0600

### **TECHNICAL SPECIFICATIONS**

	<b>TS-500</b>	<b>TS- 700</b>	<b>TS-800</b>	<b>TS-1000</b>	<b>TS-1200</b>
LENGTH, INCH	51	57	57	57	57
WIDTH, INCH	68	68	77	77	77
FILLING HEIGHT, INCH	32	36	35	38	41
WEIGHT EMPTY, lb	320	346	350	370	384
CONTENTS/APPROX lb	1065/1102	1508/1543	1563/1764	2019/2205	2491/2645
DISTRIBUTION RATE lb/min	22/440	22/440	22/440	22/440	22/440
THREE POINT LINKAGE	CAT 1/11	CAT 1/11	CAT 1/11	CAT1/11	CAT 1/11
P.T.O. revs./minute	540	540	540	540	540
CENTER OF GRAVITY FROM LIFT PIN, INCH - CAT 1/11	CAT 1 / 11 26 / 22	CAT 1 / 11 26 / 22	CAT 1 / 11 26 / 22	CAT 1 / 11 26 / 22	CAT 1 / 11 26 / 22
REQUIRED LIFTING CAPACITY AT THE LIFT PIN lb	18-1985	22-2425	262866	31-3307	37-3968
DISTRIBUTION WIDTH Standard IN FBET Optional	33/39 49	33/39 49	33/39 49	33/39 49	33/39 49
VOLUME CAPACITY GALLON	128	181	187	254	299
CUBIC FT	17	24	25	34	40
LITER	483	684	709	961	1,130

REMOTE CONTROL FROM THE TRACTOR SEAT IS STANDARD ON ALL MODELS.