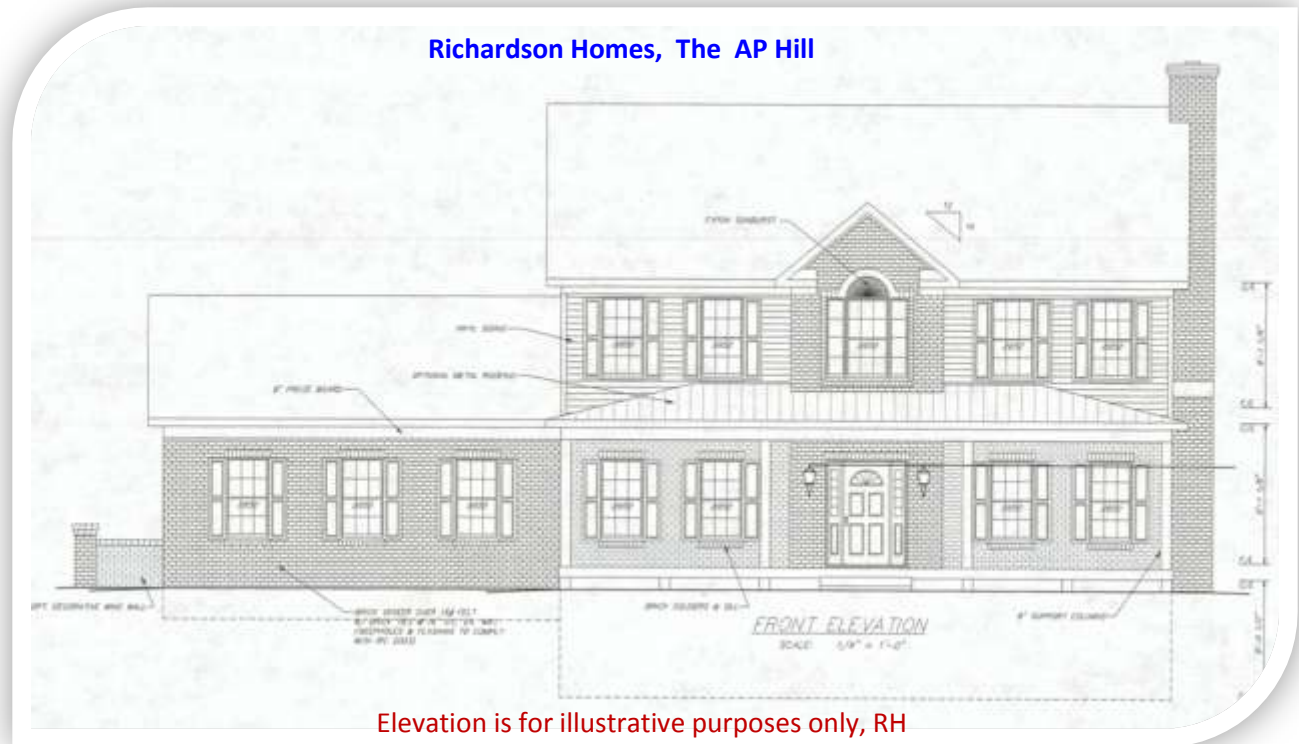


Richardson Homes, The AP Hill



Elevation is for illustrative purposes only, RH



“The AP Hill”

Model	“The Clayton”	
AREA CALCULATIONS	FINISHED	UNFINISHED
BASEMENT		1,586'
FIRST FLOOR	1,586'	
SECOND FLOOR	1,302'	
BONUS ROOM		
GARAGE		572'
COVERD PORCHES		314'
DECKS		
<b>PLAN TOTALS</b>	<b>2,888'</b>	<b>2,472'</b>
<b>Total Construction of Home:</b>	<b>5,360 SQ FT</b>	
<b>Overall Width: 66'-0"</b>	<b>Overall Depth: 52'-0"</b>	

Architectural renderings are similarities / conceptions only.

Some floor plans may vary with elevations. Elevations & floor plans may reflect optional features.

Richardson Homes reserves the right to make changes and or substitute products, dimensions, specifications, architectural detail and design without notice.



## "The AP Hill"

1<sup>st</sup> Floor Level: 1,586 SF, heated

Bedrooms: 4

Bathrooms: 2.5

Master Suite: 2<sup>nd</sup> floor level

Laundry: 1<sup>st</sup> floor level

Garage: 2- Car spaces

Basement: Full / Finishable Living Space



### Main Level Floor Plan

Architectural renderings are similarities / conceptions only.

Some floor plans may vary with elevations. Elevations & floor plans may reflect optional feature.

Richardson Homes reserves the right to make changes and or substitute products, dimensions, specifications, architectural detail and design without notice.



## "The AP Hill"

2<sup>nd</sup> Floor Level: 1,302 SF, heated

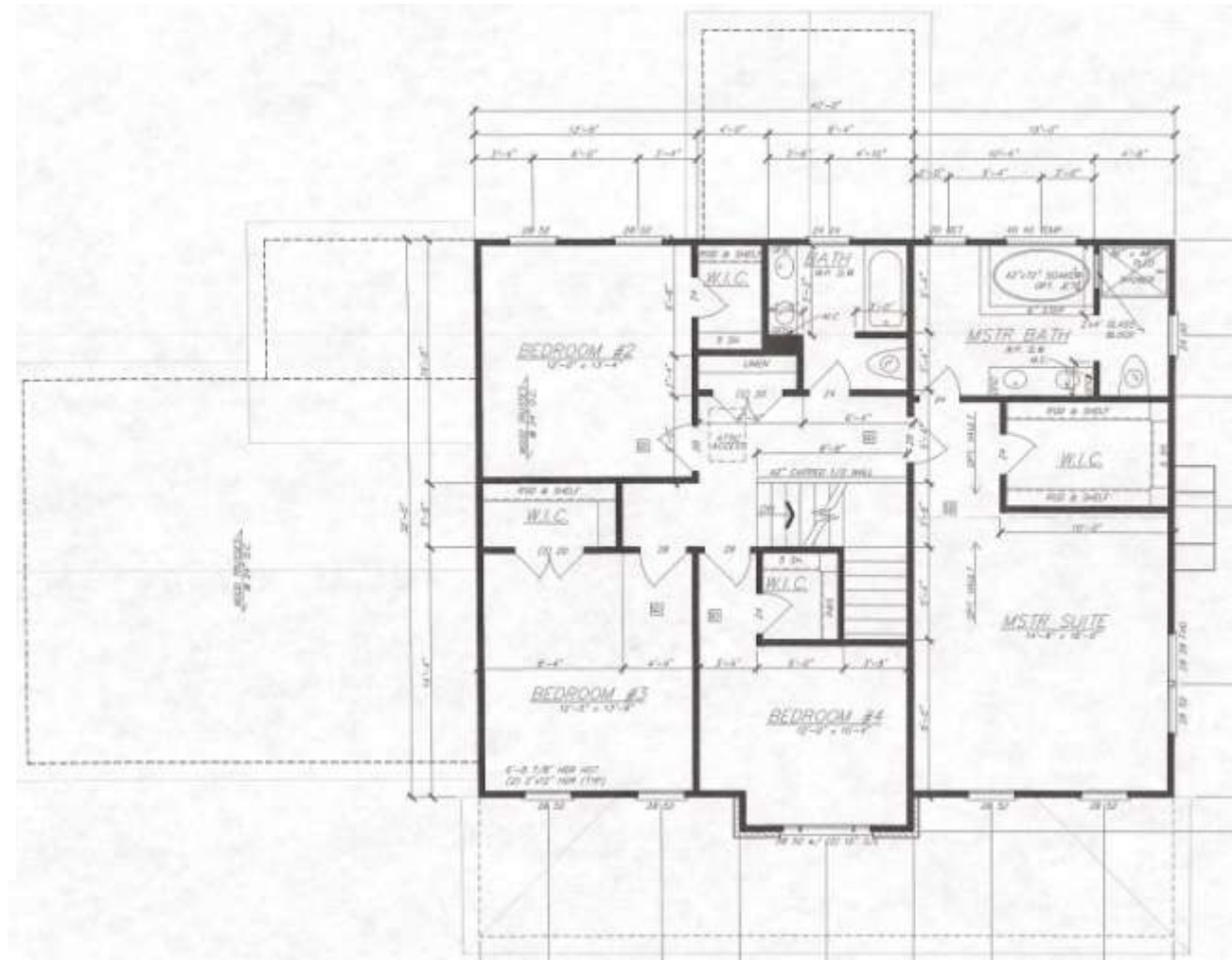
Bedrooms: 4

Bathrooms: 2.5

Laundry: 1<sup>st</sup> floor level

Garage: 2- Car spaces

Basement: Full / Finishable Living Space



### Upper Level Floor Plan

Architectural renderings are similarities / conceptions only.

Some floor plans may vary with elevations. Elevations & floor plans may reflect optional features.

Richardson Homes reserves the right to make changes and or substitute products, dimensions, specifications, architectural detail and design without notice.