

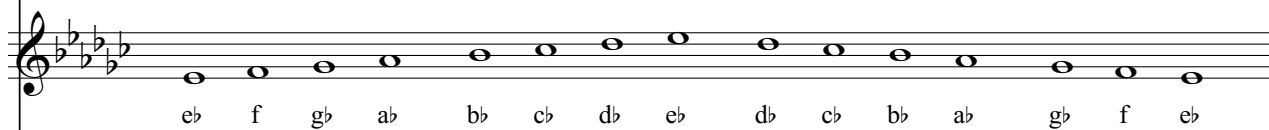
# *e<sup>b</sup> minor*

relative major: G<sup>b</sup> +

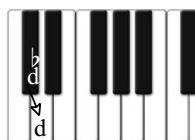
key signature: b<sup>b</sup> e<sup>b</sup> a<sup>b</sup> d<sup>b</sup> g<sup>b</sup> c<sup>b</sup>

tip: all notes are flat except for F

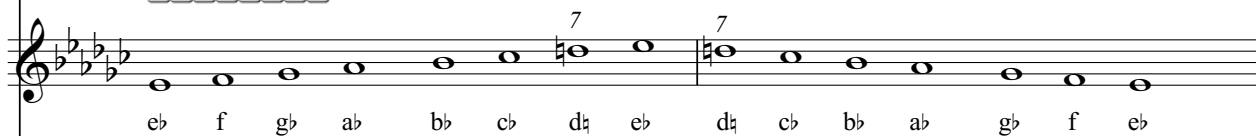
## *e<sup>b</sup> minor natural*



## *e<sup>b</sup> minor harmonic*



creating the LEADING NOTE: d<sup>b</sup> is raised to d<sup>n</sup>



## *e<sup>b</sup> minor melodic*

Ascending the scale the 6th note g<sup>b</sup> is raised to g<sup>n</sup>.

