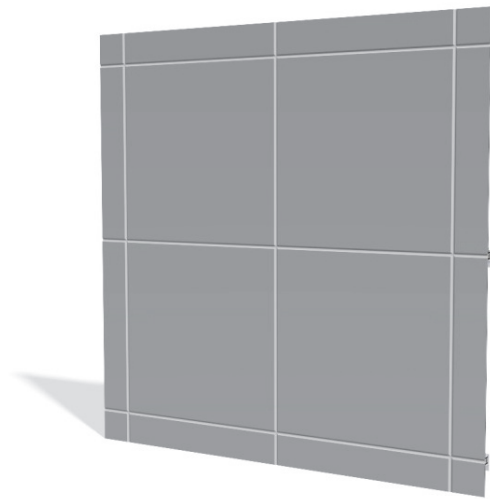
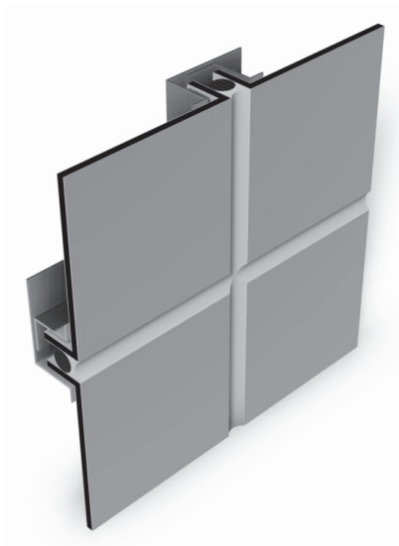


3207 Labore Road | Vadnais Heights, MN 55110
Phone: 651-646-1706 | Fax: 651-646-1684
email: atomic@atomicsheetmetal.com
www.atomicsheetmetal.com

ASM W-S PANEL



The ASM W-S (Wet-Seal) Composite Panel features:

- Weather-sealed panel joints utilizing high quality silicone sealant with backer rod
- 4mm aluminum composite material (Most common)
- 1/2" panel joints typical
- 1-1/2" or 2" panel depth (+3/4" with hat channel) Hat channel required at certain conditions
- Fabricated on a CNC machine using the route and returned method
- Radiused and vented options
- Panel widths can vary and are available up to 5' max
- Panel lengths can vary and are available up to 16' max
- We work with the top composite material manufacturers for a wide range of color and finish options

Please contact us for more information regarding pricing, installation, detailing, or for any questions you may have.
4/6/2021