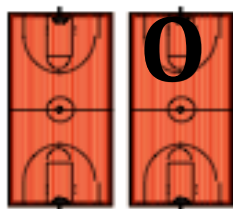


- A - REGISTRATION & INFORMATION  
 B - SOUVENIR SALES  
 C - BANNER MAKING & STANDS  
 D - **TRIATHLON TRAVELS** (GYM - RED)  
 E - **EMOJI, SPEAK FOR YOURSELF** (PURPLE)  
 F - **MOCKUMENTARY! SERIOUSLY?** (YELLOW)  
 G - **ANIMAL HOUSE** (WEIGH-IN)  
 H - **ANIMAL HOUSE** (GREEN)  
 I - **A STELLAR HANGOUT** (BLUE)  
 J - **WE'RE COOKING NOW** (ORANGE) (Saturday only)  
 K - **SPONTANEOUS** (MULTI-COLORED)  
 L - PROP DROP OFF/PICK-UP  
 M - HOSPITALITY (Coaches Only)  
 N - JUDGES DINING ROOMS  
 O - OMER'S FEST Inflatables (Saturday only)  
 P - PRIMARY PARTY AT 3:00 pm (Saturday only)  
 Q - AWARDS CEREMONY (GYM)  
 ☆ - RESTROOMS  
 ♥ - Okay for Canopies  
 ⊙ - STAY OUT! OFF LIMITS!



Teams and spectators have separate entrances. Look for signs.

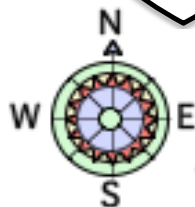
T.E. WEIGHTMAN MIDDLE SCHOOL

K - REPORT TO SPONTANEOUS BUILDING 15 MINUTES BEFORE SCHEDULED TIME.

Board Parking Only

PLEASE, STAY OFF THE GRASS.

MAIN PARKING



WELLS ROAD

Judge and Handicapped Parking

