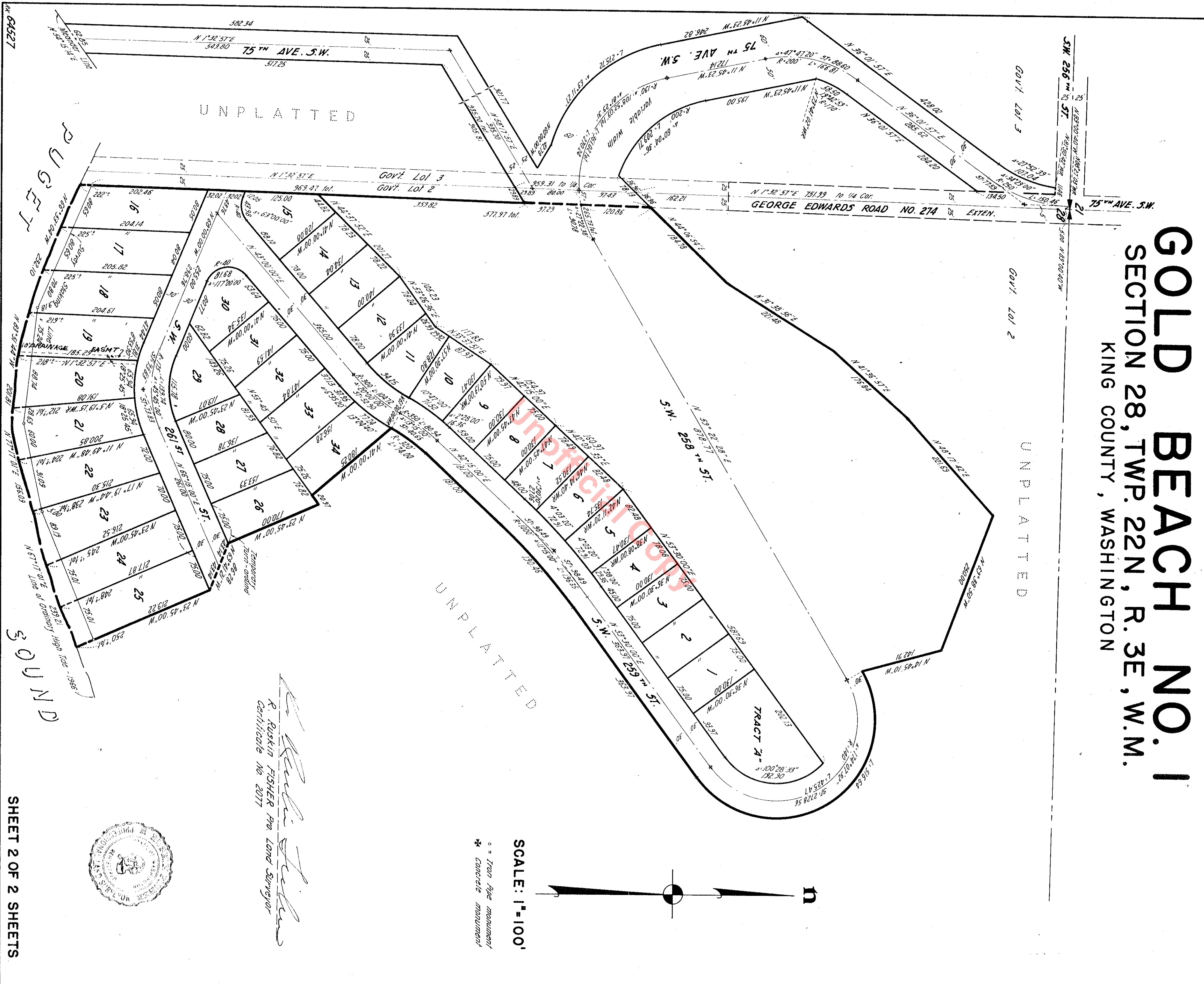


GOLD BEACH NO. 1

SECTION 28, TWP. 22N, R. 3E, W.M.

KING COUNTY, WASHINGTON



SCALE: 1"=100'

○ = Iron pipe monument
 * = concrete monument

R. Ruskin Fisher
 R. RUSKIN FISHER P.E. LAND SURVEYOR
 Certificate No. 2017

