

"Feels Real"

Softex™

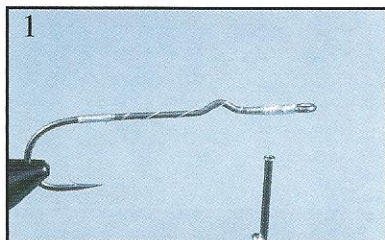
Clear Flexible Coating

The Airhead top water fly represents the latest in tying technology for traditional popper and slider patterns. The simple to tie hollow body is light weight, easy to cast and flexible allowing for a more natural feel and better hook ups. This transparent or "sparse" style fly is fished in traditional popper form or wobbled just under the surface film creating a v-shaped head wake that mimics a fleeing baitfish.

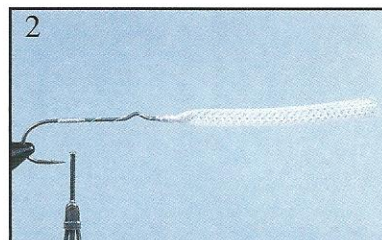
Tested on fresh, brackish and salt water fish throughout the world, the Airhead topwater has out performed other patterns for castability, imitation, animation and durability.



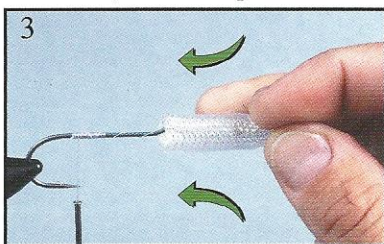
Hook-Tiemco 511S 2/O to #6.
Thread-Any strong white type.
Body- EZ Body large pearl or Flexco Tubing sized to hook. Two olive grizzly "bass bug" hackles.
Coating-**SOFTEX™**
Eyes- Stick on flat prism 3 to 7mm.
Tail- Hackle over krystal flash, over silver tinsel, over white sparkle flash.



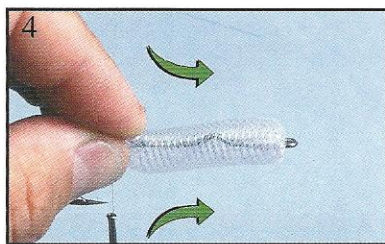
Tie a front and rear thread base each being of two courses of thread, one on top of the other and about 1/4" long. The front base tied to the eye and the rear between the hook point and barb. Coat with **SOFTEX™**.



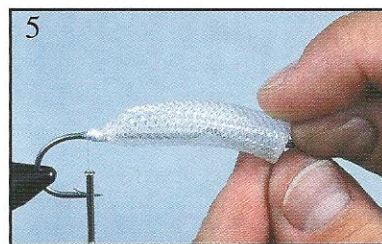
Cut a tubing section about 1 1/2 times the fly body length. Slide tube over hook eye and thread base, and secure with several thread wraps to within 1/16"-3/32" of the eye. Seal thread with **SOFTEX™**.



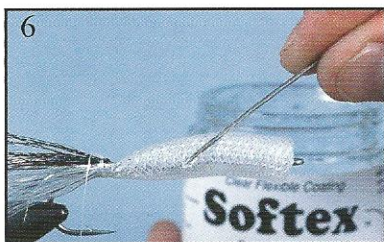
Grasp loose end of tubing material and perform "inside-out" maneuver by pushing the tubing over the hook shank and completely inside-out of itself.



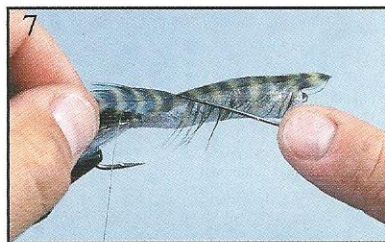
Push tubing back toward hook eye allowing it to compress and expand. Secure with several tight thread wraps around rear thread base. Seal with **SOFTEX™**.



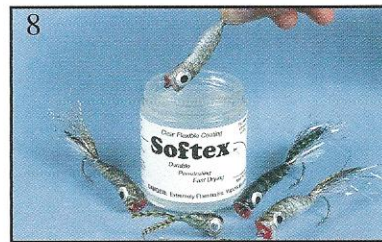
Manipulate tubing by compressing the material between the two tie in points with thumb and index finger. Pinch stroke the tubing from rear forward to expand and taper the body and form the concave face.



Tie in tail materials over rear thread base. Tie off leaving 12" thread tag and glue with **SOFTEX™**. Use bobbin to apply a coat of **SOFTEX™** over entire body and face of airhead bridging the tube strands but not filling the body.



Bed hackles into wet bridge coat with clean bobbin by stroking down one vain side then the other. Apply wet bed of **SOFTEX™** to dorsal ridge of the fly and apply second hackle over first. Secure hackles to tail wraps using thread tag.



After drying for 5-10 min. trim and color fly face and add eyes. Coat entire fly by immersing into **SOFTEX™** and hand rotate for 15-25 seconds to prevent sagging. Use wood toothpick to clean hook eye and excess **SOFTEX™** from face.