



## 20 Series Performance Parts Truck, Trailer & APU



**Build Carrier Quality Into Your  
Thermo King® Truck, Trailer  
& APU Units**





**20 Series  
Replacement  
Parts for Your  
*Other* Units...**



# **We've Got You Covered!**

**Hundreds of Reefer Parts for Your Thermo King<sup>®</sup> \*  
Truck, Trailer and APU Units.**

**Nationwide Service and Warranty. Available at Carrier Transicold Dealers.**

\*Thermo King is a registered trademark of Thermo King Corporation.

## Table of Contents

■ Alternators .....	2
■ Belts .....	4
■ Clutches & Drive Components .....	6
■ Compressors.....	8
■ Doors & Grilles .....	14
■ Electrical.....	16
■ Electronics Repair .....	20
■ Engine Parts.....	21
■ Filters .....	25
■ Hoses & Vibrasorbers .....	27
■ Refrigeration .....	28
■ Starters.....	30
■ APU.....	32
■ Cross Reference.....	36

# Alternators



TK # 41-1740  
Carrier # 30-50338-00  
Regulator



TK # 41-2195  
Carrier # 30-50341-00  
Alternator, 37 Amp



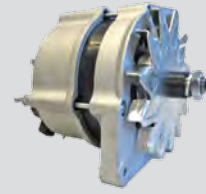
TK # 41-2197  
Carrier # 30-50342-00  
Alternator, 65 Amp



TK # 41-2198  
Carrier # 30-50337-00  
Alternator, 37 Amp



TK # 41-2200  
Carrier # 30-50336-00  
Alternator, 65 Amp



TK # 41-5457  
Carrier # 20-45-2256  
Alternator, 65 Amp, CW



TK # 41-6781  
Carrier # 20-41-8463  
Alternator, 65 Amp



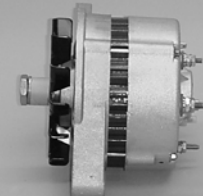
TK # 41-6782  
Carrier # 20-41-8465  
Alternator, 120 Amp



TK # 41-8461  
Carrier # 20-41-8461  
Alternator, 37 Amp



TK # 44-3325  
Carrier # 20-44-3325  
Alternator, 37 Amp



TK # 44-6257  
Carrier # 20-44-6257  
Alternator, 51 Amp



TK # 44-7320  
Carrier # 20-00363-25  
Brush Assy, Alternator



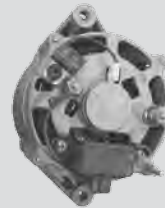
TK # 44-9041  
Carrier # 20-44-9041  
Harness, Alternator



TK # 44-9143  
Carrier # 20-44-9143  
Regulator, Voltage



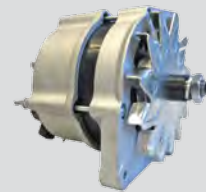
TK # 44-9336  
Carrier # 20-44-9336  
Harness, Alternator



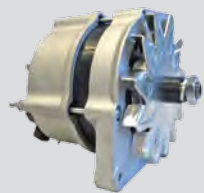
TK # 44-9571  
Carrier # 20-50340-00  
Alternator, 90 Amp



TK # 45-2254  
Carrier # 20-45-2254  
Alternator, 37 Amp, CW



TK # 45-2256  
Carrier # 20-45-2256  
Alternator, 65 Amp, CW



TK # 841-5457  
Carrier # 20-45-2256RM  
Alternator, Reman 65 Amp, CW



TK # 841-8461  
Carrier # 20-41-8461  
Alternator, 37 Amp



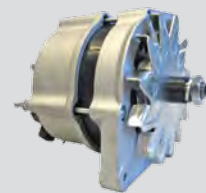
TK # 844-3325  
Carrier # 20-44-3325RM  
Alternator, Reman 37 Amp



TK # 844-6257  
Carrier # 20-44-6257RM  
Alternator, Reman 51 Amp



TK # 845-2254  
Carrier # 20-45-2254RM  
Alternator, Reman 37 Amp, CW



TK # 845-2256  
Carrier # 20-45-2256RM  
Alternator, Reman 65 Amp, CW

TK #	CARRIER #	DESCRIPTION
41-1739	30-00409-30	BRUSH ASSY, ALTERNATOR
41-1740	30-50338-00	REGULATOR
41-2194	30-50345-00	ALTERNATOR, 23 AMP
41-2195	30-50341-00	ALTERNATOR, 37 AMP
41-2196	20-41-2196	ALTERNATOR, 65 AMP
41-2197	30-50342-00	ALTERNATOR, 65 AMP
41-2198	30-50337-00	ALTERNATOR, 37 AMP
41-2200	30-50336-00	ALTERNATOR, 65 AMP
41-3372	20-41-3372	ALTERNATOR, 105 AMP
41-5456	20-45-2258	ALTERNATOR, 120 AMP
41-5457	20-45-2256	ALTERNATOR, 65 AMP, CW
41-5458	20-45-2254	ALTERNATOR, 37 AMP, CW
41-6781	20-41-8463	ALTERNATOR, 65 AMP, CW
41-6782	20-41-8465	ALTERNATOR, 120 AMP, CW
41-6990	20-42-367	ALTERNATOR, TIER 2, 65 AMP, CCW
41-8461	20-41-8461	ALTERNATOR, 37 AMP, CW
41-8463	20-41-8463	ALTERNATOR, 65 AMP, CW
41-8465	20-41-8465	ALTERNATOR, 120 AMP, CW
42-367	20-42-367	ALTERNATOR, 65 AMP, CCW
44-2219	30-50001-01	BRUSH KIT SET
44-3325	20-44-3325	ALTERNATOR, 37 AMP
44-6257	20-44-6257	ALTERNATOR, 51 AMP

TK #	CARRIER #	DESCRIPTION
44-7320	30-00363-25	BRUSH ASSY, ALTERNATOR
44-7323	30-00363-25	BRUSH ASSY, ALTERNATOR
44-9041	20-44-9041	HARNESS, ALTERNATOR
44-9143	20-44-9143	REGULATOR, VOLTAGE
44-9336	20-44-9336	HARNESS, ALTERNATOR
44-9571	30-50340-00	ALTERNATOR, 90 AMP
45-2254	20-45-2254	ALTERNATOR, 37 AMP, CW
45-2256	20-45-2256	ALTERNATOR, 65 AMP, CW
45-2258	20-45-2258	ALTERNATOR, 120 AMP, CW
45-2259	20-45-2259	ALTERNATOR, 120 AMP, CCW
841-5456	20-45-2258RM	ALTERNATOR, REMAN 120 AMP, CW
841-5457	20-45-2256RM	ALTERNATOR, REMAN 65 AMP, CW
841-5458	20-45-2254RM	ALTERNATOR, REMAN 37 AMP, CW
841-8461	20-41-8461	ALTERNATOR, 37 AMP
844-3325	20-44-3325RM	ALTERNATOR, REMAN, 37 AMP
844-6257	20-44-6257RM	ALTERNATOR, REMAN, 51 AMP
844-6266	20-44-6266RM	ALTERNATOR, REMAN, 37 AMP
845-2254	20-45-2254RM	ALTERNATOR, REMAN 37 AMP, CW
845-2256	20-45-2256RM	ALTERNATOR, REMAN 65 AMP, CW
845-2258	20-45-2258RM	ALTERNATOR, REMAN 120 AMP, CW





TK #	CARRIER #	DESCRIPTION
78-214	20-78-214	BELT, MOLDED NOTCH, 119" OD
78-267	20-78-267	BELT
78-272	50-00093-00	BELT
78-287	20-78-287	BELT, 146" OD
78-362	20-78-362	BELT, AX COGGED
78-368	20-78-368	BELT, 52.65" OD, MATCHED SET
78-429	20-78-429	BELT, 42" OD
78-436	20-78-436	BELT, 53" OD
78-471	20-78-471	BELT, ALTERNATOR TO WATER PUMP
78-513	20-78-513	BELT, 30.5" OD
78-556	20-78-556	BELT, FAN, X426 COMPRESSOR
78-560	20-78-666	BELT, FAN, X430 COMPRESSOR
78-591	20-78-591	BELT, 60" OD
78-592	20-78-592	BELT, 53.3" OD
78-603	20-78-603	BELT, FAN
78-604	20-78-604	BELT, ENGINE TO IDLER
78-626	20-78-626	BELT, BX CUT
78-628	20-78-628	BELT, BX CUT, SET OF 2
78-629	20-78-629	BELT, ENGINE TO IDLER
78-656	20-78-656	BELT, WRAPPED
78-666	20-78-666	BELT, FAN, X430 COMPRESSOR
78-667	20-78-667	BELT, 47.7" OD

TK #	CARRIER #	DESCRIPTION
78-679	20-78-679	BELT, WATER PUMP
78-684	20-78-684	BELT, EVAPORATOR FAN
78-698	20-78-698	BELT, EVAPORATOR FAN TO COMPRESSOR
78-700	20-78-700	BELT, ALTERNATOR TO EVAPORATOR FAN
78-721	20-78-721	BELT, RAW EDGE, COGGED, 155" OD
78-739	20-78-757	BELT, ENGINE TO IDLER
78-751	20-78-751	BELT, ALTERNATOR
78-757	20-78-757	BELT, ENGINE TO IDLER
78-766	20-78-766	BELT, ALTERNATOR TO EVAPORATOR FAN
78-767	20-78-767	BELT, WATER PUMP
78-784	20-78-784	BELT, COMPRESSOR DRIVE, 2.2 DI
78-785	20-78-785	BELT, COMPRESSOR DRIVE, SET OF 2
78-800	20-78-800	BELT, EVAPORATOR FAN TO COMPRESSOR
78-826	20-78-826	BELT, B MOLDED
78-835	20-78-835	BELT, FAN
78-841	20-78-841	BELT, ENGINE TO COMPRESSOR
78-842	20-78-842	BELT, A CUT
78-844	20-78-844	BELT, FAN
78-845	20-78-845	BELT, ALTERNATOR
78-890	20-78-890	BELT, B CUT
78-896	20-78-896	BELT, ENGINE TO COMPRESSOR
78-898	20-78-898	BELT, JACKSHAFT TO COMPRESSOR

TK #	CARRIER #	DESCRIPTION
78-899	20-78-899	BELT, JACKSHAFT TO COMPRESSOR
78-900	20-78-900	BELT, ENGINE TO COMPRESSOR TO IDLER
78-928	20-78-928	BELT, RAW EDGE B
78-929	20-78-929	BELT, ALTERNATOR
78-936	20-78-936	BELT, MOTOR TO JACKSHAFT
78-937	20-78-977	BELT, ENGINE TO COMPRESSOR
78-977	20-78-977	BELT, ENGINE TO COMPRESSOR
78-983	20-78-983	BELT, RAW EDGE B, COGGED
78-1000	20-78-1000	BELT, FAN
78-1011	20-78-1011	BELT, WATER PUMP
78-1012	20-78-1012	BELT, WATER PUMP
78-1026	20-78-1026	BELT, WATER PUMP
78-1031	20-78-1031	BELT, ENGINE TO COMPRESSOR
78-1048	20-78-1048	BELT, ENGINE TO MOTOR TO ALTERNATOR
78-1051	20-78-1051	BELT, ENGINE, W/BACKSIDE IDLER
78-1067	20-78-1067	BELT, MOTOR TO COMPRESSOR
78-1083	20-78-1083	BELT
78-1106	20-78-1106	BELT
78-1109	20-78-1341	BELT, WATER PUMP TO ALTERNATOR
78-1129	20-78-1129	BELT, POLY V
78-1223	20-78-1223	BELT
78-1263	20-78-1263	BELT, MOTOR TO COMPRESSOR
78-1340	20-78-1340	BELT, WATER PUMP TO CRANK PULLEY
78-1341	20-78-1341	BELT, WATER PUMP TO ALTERNATOR
78-1350	20-78-1350	BELT, ENGINE TO MOTOR
78-1351	20-78-1351	BELT, ENGINE TO MOTOR
78-1353	20-78-1353	BELT, ENGINE TO MOTOR
78-1360	20-78-1360	BELT, COGGED
78-1366	20-78-1366	BELT, ENGINE
78-1367	20-78-1367	BELT

TK #	CARRIER #	DESCRIPTION
78-1484	20-78-1484	BELT, POLYRIB 6
78-1488	20-78-1488	BELT, IDLER TO FANSHAFT
78-1492	20-78-1492	BELT, WATER PUMP
78-1543	20-78-1543	BELT
78-1634	20-78-1634	BELT
78-1655	20-78-1655	BELT
78-1668	20-78-1668	BELT
78-1669	20-78-1669	BELT, ENGINE TO MOTOR
78-1681	20-78-1681	BELT, ENGINE TO MOTOR
78-1686	20-78-1686	BELT
78-1688	20-78-1688	BELT
78-1689	20-78-1689	BELT, MOTOR TO COMPRESSOR
78-1720	20-78-1720	BELT
78-1724	20-78-1724	BELT
78-1736	20-78-1736	BELT, WATER PUMP
78-1744	20-78-1744	BELT
78-1844	20-78-1875	BELT
78-1845	20-78-1877	BELT
78-1858	20-78-1858	BELT
78-1859	20-78-1859	BELT
78-1860	20-78-1860	BELT
78-1862	20-78-1862	BELT
78-1863	20-78-1863	BELT
78-1865	20-78-1865	BELT
78-1866	20-78-1866	BELT
78-1876	20-78-1876	BELT
78-1877	20-78-1877	BELT

# Clutches & Drive Components



TK # 70-201  
Carrier # 20-70-201  
Kit, Idler Pulley



TK # 77-1070  
Carrier # 20-77-1070  
Assy, Bearing



TK # 77-1527  
Carrier # 20-77-2613  
Shaft, Idler Pulley



TK # 77-1609  
Carrier # 20-77-2504  
Coupler, Compressor Drive



TK # 77-2003  
Carrier # 20-77-2003  
Pulley Assy, Idler



TK # 77-2004  
Carrier # 20-77-2004  
Pulley Assy, Idler



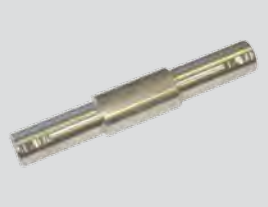
TK # 77-2504  
Carrier # 20-77-2504  
Coupler, Compressor Drive



TK # 77-2506  
Carrier # 20-77-2506  
Coupler, 8 Pin, Large Shaft



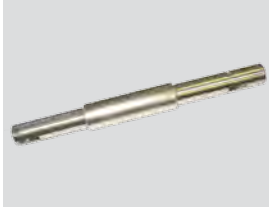
TK # 77-2509  
Carrier # 20-77-2509  
Coupler, 6 Pin, Large Shaft  
w/Hardware



TK # 77-2613  
Carrier # 20-77-2613  
Shaft, Idler Pulley



TK # 77-2614  
Carrier # 20-77-2614  
Shaft, Fan



TK # 77-2617  
Carrier # 20-77-2617  
Shaft, Fan



TK # 77-2620  
Carrier # 20-77-2620  
Shaft, Fan



TK # 77-2621  
Carrier # 20-77-2621  
Shaft, Fan



TK # 107-176  
Carrier # 20-107-349  
Clutch, 3 Groove



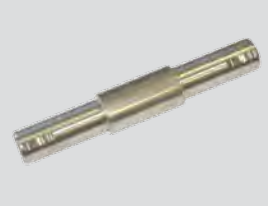
TK # 107-183  
Carrier # 20-107-349  
Clutch, 3 Groove



TK # 107-272  
Carrier # 20-107-349  
Clutch, 3 Groove



TK # 107-349  
Carrier # 20-107-349  
Clutch, 3 Groove



TK # N/A  
Carrier # 20-77-2613SV  
Repair Kit, Shaft, 77-2613



# Clutches & Drive Components



TK #	CARRIER #	DESCRIPTION
33-1924	20-33-1924	SEAL, OIL
33-2134	20-33-2134	SEAL, OIL
70-135	20-70-135	REPAIR KIT, FANSHAFT
70-199	20-70-199	PULLEY, IDLER
70-200	20-70-200	KIT, IDLER
70-201	20-70-201	KIT, IDLER PULLEY
77-397	20-77-2856	BUSHING, DRIVE
77-1070	20-77-1070	ASSY, BEARING
77-1304	04-50027-01	BEARING
77-1527	20-77-2613	SHAFT, IDLER PULLEY
77-1609	20-77-2504	COUPLER, COMPRESSOR DRIVE
77-2003	20-77-2003	PULLEY ASSY, IDLER
77-2004	20-77-2004	PULLEY ASSY, IDLER
77-2358	20-77-2358	COUPLER, STD SHAFT, 8 BUSHING
77-2504	20-77-2504	COUPLER, COMPRESSOR DRIVE
77-2505	20-77-2505	SPACER, COUPLER
77-2506	20-77-2506	COUPLER, 8 PIN, LARGE SHAFT

TK #	CARRIER #	DESCRIPTION
77-2509	20-77-2509	COUPLER, 6 PIN, LARGE SHAFT W/HARDWARE
77-2613	20-77-2613	SHAFT, IDLER PULLEY
77-2614	20-77-2614	SHAFT, FAN
77-2617	20-77-2617	SHAFT, FAN
77-2619	20-77-2619	SHAFT, FAN
77-2620	20-77-2620	SHAFT, FAN
77-2621	20-77-2621	SHAFT, FAN
77-2856	20-77-2856	BUSHING, DRIVE
107-176	20-107-349	CLUTCH, 3 GROOVE
107-183	20-107-349	CLUTCH, 3 GROOVE
107-241	17-60084-00	CLUTCH, 12V, POLY V8
107-272	20-107-349	CLUTCH, 3 GROOVE
107-311	17-60080-00	CLUTCH, 24V, 2 AMP, GROOVE
107-341	20-107-341	CLUTCH
107-343	20-107-343	CLUTCH, 8 BUSHING, LARGE SHAFT
107-349	20-107-349	CLUTCH, 3 GROOVE
#N/A	20-77-2613SV	REPAIR KIT, SHAFT, 77-2613

- Carrier® replacement compressors are fully rebuilt – not just repaired
- 2-year limited warranty\* when installed by an authorized Carrier Transicold dealer
- 1-year limited warranty\* – over the counter

## Our Rebuild Process Always Includes the Following New Parts:

- Pistons
- Check valves
- Shaft seal
- Connecting rods
- Crankshaft
- Oil pump
- Sleeves
- Main bearings
- Gaskets & o-rings
- Valve plates
- Rod bearings

TK #	CARRIER #	DESCRIPTION
810-2477	20-X214-COMP	COMPRESSOR, X214
810-2525	20-X426-COMP	COMPRESSOR, X426, SMALL SHAFT
810-2910	20-X426-COMP	COMPRESSOR, X426, SMALL SHAFT
810-2920	20-X426-COMP	COMPRESSOR, X426, SMALL SHAFT
810-2650	20-X430-COMP	COMPRESSOR, X430, SMALL SHAFT
810-2647	20-X430LS-C3	COMPRESSOR, X430LS, C3
810-2940	20-X430LS-C3	COMPRESSOR, X430LS, C3
810-2821	20-X430LS-C3-7Q	COMPRESSOR, X430LS, C3, 7QT
810-2975	20-X430LS-C3-7Q	COMPRESSOR, X430LS, C3, 7QT
810-2900	20-X430LS-C5	COMPRESSOR, X430LS, C5
810-2918	20-X430LS-C5	COMPRESSOR, X430LS, C5
810-2902	20-X430LS-C5-7Q	COMPRESSOR, X430LS, C5, 7QT

\*Warranty: Product warranty and limitations are outlined in Form 62-10670.



Carrier Part # 20-X430LS-C3-7Q



Carrier Part # 20-X430LS-C3



Carrier Part # 20-X214-COMP

## COMPRESSORS FOR TRIPAC®



TK # 102-580  
Carrier # 20-102-870  
TM15, 12V, Poly8 GRV, w/Man



TK # 102-870  
Carrier # 20-102-870  
TM15, 12V, Poly8 GRV, w/Man



TK # 102-963  
Carrier # 20-102-870  
TM15, 12V, Poly8 GRV, w/Man

## COMPRESSOR PARTS



TK # 204-244  
Carrier # 20-204-244  
Wrench, Sight Glass



TK # 22-1027  
Carrier # 20-22-1027  
Crankshaft, X430 Large Shaft



TK # 22-1028  
Carrier # 20-22-1028  
Cover, Front, X430 Large Shaft



TK # 22-1100  
Carrier # 20-22-1100  
Shaft Seal, X430, Stainless



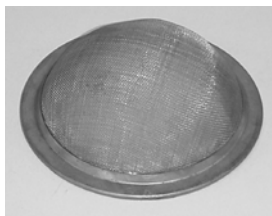
TK # 22-1101  
Carrier # 20-22-1101  
Shaft Seal, X430 Large Shaft



TK # 22-1160  
Carrier # 20-22-1160  
Pump, Compressor Oil, X-Style



TK # 22-220  
Carrier # 20-22-220  
Bearing, Compressor



TK # 22-306  
Carrier # 20-22-306  
Screen, Suction



TK # 22-307  
Carrier # 20-22-784  
Regulator, Oil Press



TK # 22-350  
Carrier # 20-22-350  
Sight Glass, With O-Ring



TK # 22-378  
Carrier # 20-22-778  
Seal, Compressor



TK # 22-455  
Carrier # 20-22-990  
Valve Plate Assembly

\*TriPac is a registered trademark of Thermo King Corporation.

# Compressors

## COMPRESSOR PARTS



TK # 22-476  
Carrier # 20-22-849  
Piston, D214/246/X246



TK # 22-566  
Carrier # 20-22-787  
Valve, Check, Compressor



TK # 22-568  
Carrier # 20-22-568  
Valve, Check



TK # 22-608  
Carrier # 20-22-608  
Sleeve, Cylinder, D214, X214



TK # 22-611  
Carrier # 20-22-611  
Tube, Oil Pickup



TK # 22-639  
Carrier # 20-22-639  
Rod, Connecting



TK # 22-653  
Carrier # 20-22-653  
Valve, Check



TK # 22-654  
Carrier # 20-22-655  
Crankshaft, X430 (Forged)



TK # 22-655  
Carrier # 20-22-655  
Crankshaft, X430 (Forged)



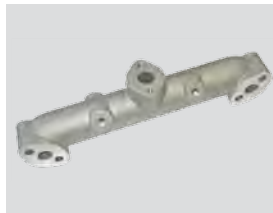
TK # 22-656  
Carrier # 20-22-656  
Sleeve, Cylinder, X430



TK # 22-662  
Carrier # 20-22-850  
Piston, X430 Compressor



TK # 22-723  
Carrier # 20-22-723  
Flange, Compressor



TK # 22-735  
Carrier # 20-22-735  
Manifold, X430 Discharge



TK # 22-777  
Carrier # 20-22-777  
Shaft Seal, Compressor



TK # 22-778  
Carrier # 20-22-778  
Seal, Compressor



TK # 22-784  
Carrier # 20-22-784  
Regulator, Oil Press



TK # 22-787  
Carrier # 20-22-787  
Valve, Check, Compressor



TK # 22-788  
Carrier # 20-22-789  
Head, Compressor,  
w/o Tapped Hole



TK # 22-789  
Carrier # 20-22-789  
Head, Compressor,  
w/o Tapped Hole



TK # 22-804  
Carrier # 20-22-804  
Crankshaft, X214



TK # 22-849  
Carrier # 20-22-849  
Piston, D214/246/X246



TK # 22-850  
Carrier # 20-22-850  
Piston, X430 Compressor



TK # 22-899  
Carrier # 20-22-899  
Shaft Seal, X214



TK # 22-990  
Carrier # 20-22-990  
Valve Plate Assembly

Supported by  
180 Carrier Transicold  
dealers in North America



## COMPRESSOR PARTS



TK # 30-243  
Carrier # 20-30-243  
Gasket Kit, Compressor,  
X426 & X430



TK # 30-247  
Carrier # 20-30-247  
Gasket Kit, X214 Compressor



TK # 33-2120  
Carrier # 20-33-2120  
Seal, Compressor Oil



TK # 66-4917  
Carrier # 20-66-4917  
Filter, Compressor Oil



TK # 66-5318  
Carrier # 20-66-5318  
Valve, Suction Service



TK # 77-167  
Carrier # 20-77-167  
Bearing, Drive End, Main



TK # 77-169  
Carrier # 20-77-169  
Bearing, Pump End, Main



TK # 77-2306  
Carrier # 20-77-2306  
Bearing, Sealed X426, X430



TK # 92-7519  
Carrier # 20-92-7519  
Bracket



TK # N/A  
Carrier # 20-20-X214-WC  
Kit, Rebuild, X214  
With Crank & Rods



TK # N/A  
Carrier # 20-10-1181  
Kit, 7Qt Conversion

# Compressors

TK #	CARRIER #	DESCRIPTION
102-580	20-102-870	TM15, 12V, POLY8 GRV, W/MAN
102-870	20-102-870	TM15, 12V, POLY8 GRV, W/MAN
102-963	20-102-870	TM15, 12V, POLY8 GRV, W/MAN
11-6863	20-11-6863	SPEEDI-SLEEVE 1" SHAFT
20-131	20-20-131	KIT, COMPRESSOR CYLINDER HEAD
203-413	07-00349-00	OIL, COMPRESSOR, POE 35
203-513	07-00349-00	OIL, COMPRESSOR, POE 35
204-244	20-204-244	WRENCH, SIGHT GLASS
22-1027	20-22-1027	CRANKSHAFT, X430 LARGE SHAFT
22-1028	20-22-1028	COVER, FRONT, X430 LARGE SHAFT
22-1100	20-22-1100	SHAFT SEAL, X430, STAINLESS
22-1101	20-22-1101	SHAFT SEAL, X430 LARGE SHAFT
22-1149	20-22-1149	SHAFT, OIL PUMP
22-1160	20-22-1160	PUMP, COMPRESSOR OIL, X-STYLE
22-1182	20-22-1182	TUBE, PICK-UP, 7QT
22-1246	20-22-1246	BEARING, SET CON ROD, STD
22-220	20-22-220	BEARING, COMPRESSOR
22-306	20-22-306	SCREEN, SUCTION
22-306F	20-22-306F	FILTER, SUCTION SOCK
22-307	20-22-784	REGULATOR, OIL PRESS
22-313	20-22-313	REED, DISCHARGE VALVE
22-350	20-22-350	SIGHT GLASS, WITH O-RING
22-368	20-22-1246	BEARING, SET CON ROD, STD
22-378	20-22-778	SEAL, COMPRESSOR
22-455	20-22-990	VALVE PLATE ASSEMBLY
22-476	20-22-849	PISTON, D214/246/X246
22-552	20-22-552	SUMP, OIL
22-554	20-22-554	HOUSING, OIL PUMP, X426
22-555	20-22-555	COVER, OIL PUMP HOUSING
22-566	20-22-787	VALVE, CHECK, COMPRESSOR

TK #	CARRIER #	DESCRIPTION
22-568	20-22-568	VALVE, CHECK
22-580	20-22-1160	PUMP, COMPRESSOR OIL, X-STYLE
22-608	20-22-608	SLEEVE, CYLINDER, D214, X214
22-611	20-22-611	TUBE, OIL PICKUP
22-639	20-22-639	ROD, CONNECTING
22-653	20-22-653	VALVE, CHECK
22-654	20-22-655	CRANKSHAFT, X430 (FORGED)
22-655	20-22-655	CRANKSHAFT, X430 (FORGED)
22-656	20-22-656	SLEEVE, CYLINDER, X430
22-662	20-22-850	PISTON, X430 COMPRESSOR
22-663	20-22-663	HOUSING, OIL PUMP, X430
22-723	20-22-723	FLANGE, COMPRESSOR
22-735	20-22-735	MANIFOLD, X430 DISCHARGE
22-777	20-22-777	SHAFT SEAL, COMPRESSOR
22-778	20-22-778	SEAL, COMPRESSOR
22-784	20-22-784	REGULATOR, OIL PRESS
22-787	20-22-787	VALVE, CHECK, COMPRESSOR
22-788	20-22-789	HEAD, COMPRESSOR, W/O TAPPED HOLE
22-789	20-22-789	HEAD, COMPRESSOR, W/O TAPPED HOLE
22-804	20-22-804	CRANKSHAFT, X214
22-849	20-22-849	PISTON, D214/246/X246
22-850	20-22-850	PISTON, X430 COMPRESSOR
22-899	20-22-899	SHAFT SEAL, X214
22-990	20-22-990	VALVE PLATE ASSEMBLY
30-184	20-30-243	GASKET KIT, COMPRESSOR, X426 & X430
30-243	20-30-243	GASKET KIT, COMPRESSOR, X426 & X430
30-247	20-30-247	GASKET KIT, X214 COMPRESSOR
33-110	20-33-110	GASKET, PUMP HOUSING
33-145	20-33-2805	GASKET, MANIFOLD "WIRE" TYPE
33-1549	20-33-1549	GASKET, OIL PUMP HOUSING

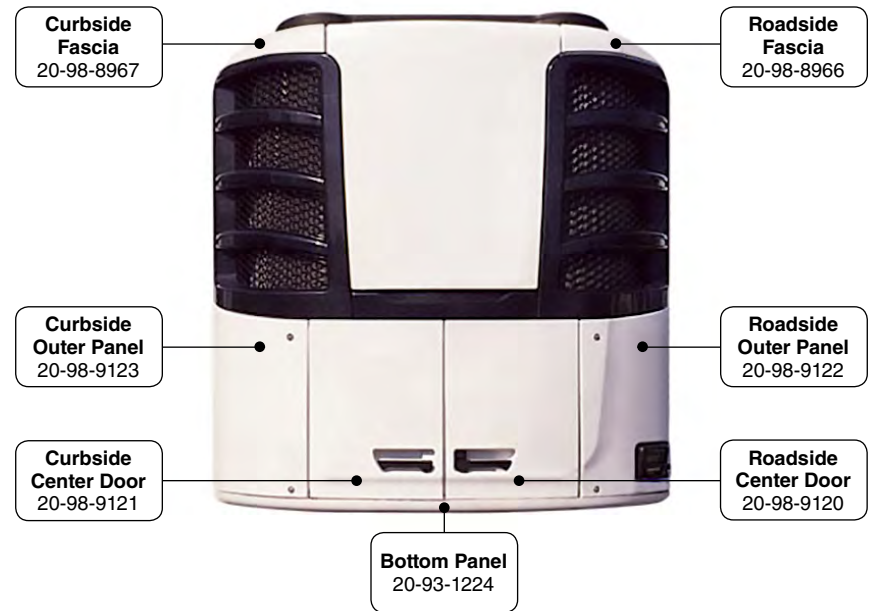
TK #	CARRIER #	DESCRIPTION
33-1919	20-33-2552	GASKET, COMPRESSOR HEAD
33-199	20-33-2514	GASKET, OIL PAN, X214
33-200	20-33-2513	GASKET, DRIVE PLATE
33-2044	20-33-2044	SEAL, LIP
33-2120	20-33-2120	SEAL, COMPRESSOR OIL
33-2513	20-33-2513	GASKET, DRIVE PLATE
33-2514	20-33-2514	GASKET, OIL PAN, X214
33-2515	20-33-2515	GASKET, OIL PAN (DEEP SUMP)
33-2552	20-33-2552	GASKET, COMPRESSOR HEAD
33-2805	20-33-2805	GASKET, MANIFOLD "WIRE" TYPE
33-2935	20-33-2935	GASKET, VALVE COVER, 482/486
33-3004	20-33-3004	SEAL, LIP
33-3797	20-33-3797	GASKET, OIL PAN, 7QT
33-3877	20-33-3877	GASKET, OIL LEVEL SWITCH
33-4122	20-33-4122	GASKET, CYLINDER HEAD
55-1983	40-00086-04	CAP, FLARE, SERVICE VALVE, 1/4"
55-2669	40-00086-06	CAP, FLARE, KING VALVE, 3/8"
55-455	20-55-455	KEY
55-6751	20-55-6751	PLUG, OIL DRAIN
55-6752	20-55-6752	PLUG, OIL PUMP

TK #	CARRIER #	DESCRIPTION
55-9024	20-55-9024	KEY, COMPRESSOR SHAFT
55-9032	20-55-9032	KEY, COMPRESSOR SHAFT
55-9760	20-55-9760	KEY, OIL PUMP
66-2296	17-10812-01	CAP, SERVICE VALVE (PLASTIC), W/HOLE
66-3015	17-10806-10	CAP, SERVICE VALVE (BRASS)
66-4917	20-66-4917	FILTER, COMPRESSOR OIL
66-5318	20-66-5318	VALVE, SUCTION SERVICE
67-404	07-00274-00	OIL, COMPRESSOR, 150 SYNTHETIC
67-426	07-00275-00	OIL, COMPRESSOR, R0-15
77-167	20-77-167	BEARING, DRIVE END, MAIN
77-169	20-77-169	BEARING, PUMP END, MAIN
77-2306	20-77-2306	BEARING, SEALED X426, X430
92-7519	20-92-7519	BRACKET
99-6545	20-99-6545	PLATE, COMPRESSOR SUCTION
#N/A	20-20-X430LS-WC	KIT, REBUILD, X430 LARGE SHAFT
#N/A	20-20-X214-WC	KIT, REBUILD, X214 WITH CRANK & RODS
#N/A	20-10-1181	KIT, 7QT CONVERSION
#N/A	20-20-X430LS-WOC	KIT, REBUILD, X430 LARGE SHAFT
#N/A	20-20-X430-WC	KIT, REBUILD, X430 WITH CRANK & RODS



# Keep Your Thermo King®\* Unit Looking New with Carrier® Replacement Doors & Grilles

- Direct fit replacement doors, panels and grilles for Precedent\* and SB units
- Made of durable fiberglass to withstand harsh environments
- Pre-painted gel coat; color matched to OE
- UV resistant

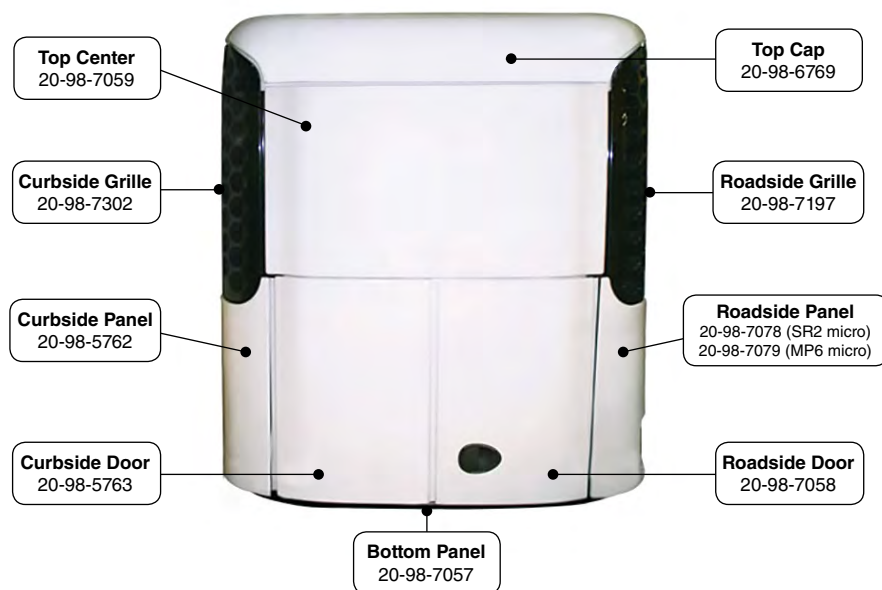


## Doors for Precedent®\* Units

TK #	CARRIER #	DESCRIPTION
93-1224	20-93-1224	PANEL, BOTTOM
98-8966	20-98-8966	FASCIA, ROADSIDE
98-8967	20-98-8967	FASCIA, CURBSIDE
98-9120	20-98-9120	DOOR, ROADSIDE
98-9121	20-98-9121	DOOR, CURBSIDE
98-9122	20-98-9122	PANEL, ROADSIDE
98-9123	20-98-9123	PANEL, CURBSIDE

\*Thermo King and Precedent are registered trademarks of Thermo King Corporation.





## Doors & Grilles for SB Units

TK #	CARRIER #	DESCRIPTION
98-2747	20-98-2747	TOP CAP
98-2748	20-98-2748	DOOR, CURBSIDE, ALUMINUM
98-3030	20-98-3030	DOOR, CURBSIDE, ALUMINUM
98-3031	20-98-3031	DOOR, ROADSIDE, ALUMINUM, UPPER HANDLE
98-4489	20-98-4489	DOOR, ROADSIDE, ALUMINUM, LOW HANDLE
98-5762	20-98-5762	PANEL, CURBSIDE
98-5763	20-98-5763	DOOR, CURBSIDE
98-6769	20-98-6769	TOP CAP
98-7057	20-98-7057	PANEL, BOTTOM
98-7058	20-98-7058	DOOR, ROADSIDE
98-7059	20-98-7059	DOOR, TOP CENTER
98-7078	20-98-7078	PANEL, ROADSIDE, SMALL OPENING
98-7079	20-98-7079	PANEL, ROADSIDE, LARGE OPENING
98-7197	20-98-7197	GRILLE, ROADSIDE, BLACK

## Door Accessories

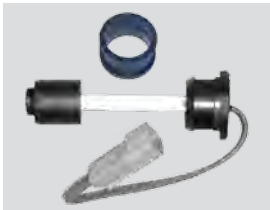
TK #	CARRIER #	DESCRIPTION
98-7302	20-98-7302	GRILLE, CURBSIDE, BLACK
99-1428	20-99-1428	LATCH, DOOR
55-3369	20-55-3369	FASTENER, WING
91-188	20-91-188	LATCH, DOOR
91-3905	20-91-3905	BEARING, DAMPER
91-9621	20-91-9621	LATCH, DOOR
92-1129	20-92-1129	HINGE, DOOR, TOP, CURBSIDE
92-1130	20-92-1130	HINGE, DOOR, BOTTOM, CURBSIDE
92-1132	20-92-1132	BOLT, STRIP
92-1133	20-92-1133	HINGE, DOOR, TOP, ROADSIDE
92-1134	20-92-1134	HINGE, DOOR, BOTTOM, ROADSIDE
92-1135	20-92-1135	BOLT, STRIP
92-1136	20-92-1136	HINGE, PANEL, ROADSIDE
92-1137	20-92-1137	HINGE, PANEL
92-374	20-92-374	LATCH, SLAM
92-383	20-92-383	HINGE, DOOR, BOTTOM
92-384	20-92-384	HINGE, DOOR, CURBSIDE
92-385	20-92-385	HINGE, DOOR
92-386	20-92-386	HINGE, DOOR, LOWER, ROADSIDE
92-535	20-92-535	STRUT
99-2127	20-99-2127	HINGE
99-2128	20-99-2128	HINGE
99-6565	20-99-6565	BEARING, DAMPER
99-6599	20-99-6599	LATCH, DOOR, CURVED END
99-6900	20-99-6900	LATCH, DOOR, FLAT END
99-8021	20-99-8021	HINGE, ROADSIDE
99-8022	20-99-8022	HINGE, DOOR, CURBSIDE
99-8029	20-99-8029	HINGE, FEMALE
99-8100	20-99-8100	PIN, PIVOT
99-8103	20-99-8103	STRIKE PLATE, DOOR LATCH
99-8104	20-99-8104	HINGE, MALE (LH)
99-8304	20-99-8304	HINGE, MALE (RTH)



TK # 40-974  
Carrier # 20-40-974  
Sensor, Graded



TK # 40-975  
Carrier # 20-40-975  
Sensor, Ungraded



TK # 41-402  
Carrier # 20-41-402SV  
Switch, Oil Level



TK # 41-1514  
Carrier # 20-41-1514  
Switch, Defrost Termination



TK # 41-2330  
Carrier # 20-41-6539  
Sensor, Water Temp.



TK # 41-3669  
Carrier # 20-41-3669  
Switch, HPCO



TK # 41-3845  
Carrier # 20-41-3845  
Switch, HPCO



TK # 41-4470  
Carrier # 20-41-4474  
Sensor, Oil Level



TK # 41-4474  
Carrier # 20-41-4474  
Harness & Switch, On/Off



TK # 41-4523  
Carrier # 20-41-4523  
Switch, HPCO



TK # 41-4644  
Carrier # 20-41-4474  
Harness & Switch, On/Off



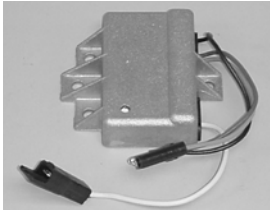
TK # 41-6539  
Carrier # 20-41-6539  
Sensor, Water Temp.



TK # 41-7020  
Carrier # 20-41-7020  
Switch, Binary



TK # 41-7068  
Carrier # 20-41-7068  
Sensor, Water Temp.



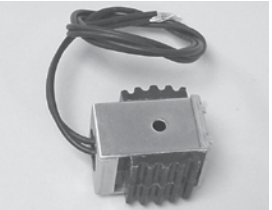
TK # 44-2039  
Carrier # 10-00265-01  
Regulator, Voltage



TK # 44-3018  
Carrier # 20-44-3018  
Switch, Water Safety



TK # 44-3186  
Carrier # 20-44-3186  
Relay, Defrost



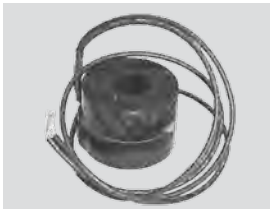
TK # 44-3930  
Carrier # 20-44-3930  
Coil, Solenoid, 12V



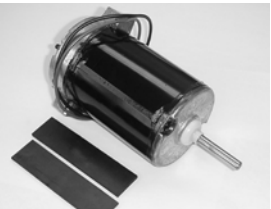
TK # 44-4774  
Carrier # 20-44-4774  
Switch



TK # 44-5013  
Carrier # 20-44-5013  
Regulator, Voltage



TK # 44-5175  
Carrier # 14-50021-02  
Coil, Solenoid Valve



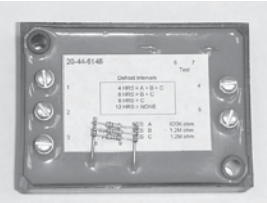
TK # 44-5925  
Carrier # 20-44-8526  
Kit, Motor, 14 VDC



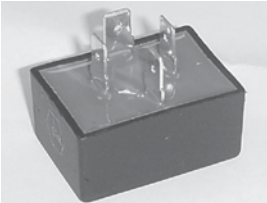
TK # 44-6018  
Carrier # 20-44-6018  
Switch, Thermostat



TK # 44-6019  
Carrier # 20-44-6019  
Bolt, Thermistor



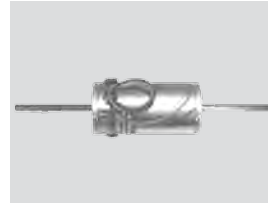
TK # 44-6148  
Carrier # 20-44-6148  
Timer, Defrost



TK # 44-6463  
Carrier # 20-44-6463  
Sentry, Battery



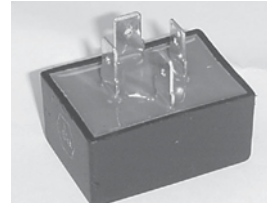
TK # 44-6534  
Carrier # 20-44-6534  
Sensor, Coolant Level



TK # 44-7172  
Carrier # 20-44-7172  
Motor, Dual Shaft, 12VDC



TK # 44-7192  
Carrier # 20-44-7192  
Switch, Starter Lock Out



TK # 44-7263  
Carrier # 20-44-7263  
Sentry, Battery



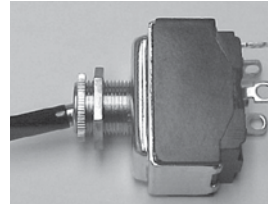
TK # 44-7531  
Carrier # 20-44-7531  
Timer, Defrost



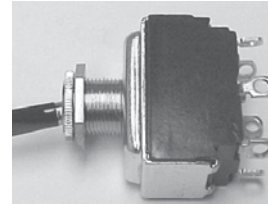
TK # 44-7620  
Carrier # 20-44-7620  
Boot, RPM Sensor



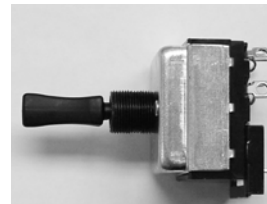
TK # 44-7774  
Carrier # 20-44-7774  
Breaker, Circuit



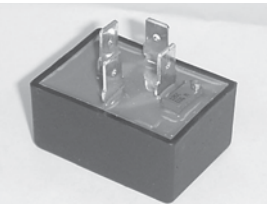
TK # 44-7792  
Carrier # 20-44-7792  
Switch, Toggle, Steel



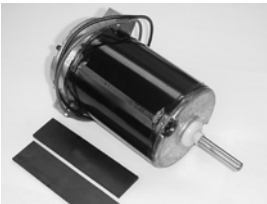
TK # 44-7929  
Carrier # 20-44-7929  
Switch, Toggle, Steel



TK # 44-7932  
Carrier # 20-44-7932  
Switch, Toggle



TK # 44-8029  
Carrier # 20-44-8029  
Relay



TK # 44-8526  
Carrier # 20-44-8526  
Kit, Motor, 14 VDC



TK # 44-8883  
Carrier # 20-44-8883  
Sensor, Oil Pressure



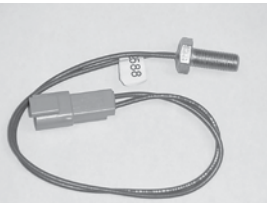
TK # 44-9111  
Carrier # 10-00286-03  
Relay



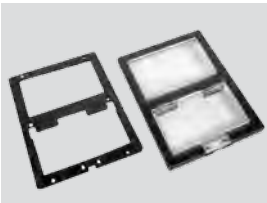
TK # 44-9302  
Carrier # 20-44-9302  
Ammeter, -50 0 +50



TK # 44-9408  
Carrier # 20-44-9408  
Switch, HPCO, w/Connector



TK # 44-9588  
Carrier # 20-44-9588  
Thermistor, Bolt



TK # 91-9303  
Carrier # 20-91-9303  
Bezel, Micro



TK # 92-2356  
Carrier # 20-92-2356  
Window, Micro Bezel

TK #	CARRIER #	DESCRIPTION
40-871	20-40-974	SENSOR, GRADED
40-872	20-40-975	SENSOR, UNGRADED
40-974	20-40-974	SENSOR, GRADED
40-975	20-40-975	SENSOR, UNGRADED
40-1082	20-40-1082	SWITCH, CUTOUT/RESET
41-385	20-41-7063	SWITCH, OIL PRESSURE
41-387	20-41-6865	SWITCH, OIL SAFETY
41-402	20-41-402SV	SWITCH, OIL LEVEL
41-740	20-41-7068	SENSOR, WATER TEMP.
41-1514	20-41-1514	SWITCH, DEFROST TERMINATION
41-1818	20-41-1818	SENSOR, COOLANT LEVEL
41-2330	20-41-6539	SENSOR, WATER TEMP.
41-3318	20-41-3318	RELAY
41-3669	20-41-3669	SWITCH, HPCO
41-3845	20-41-3845	SWITCH, HPCO
41-4470	20-41-4470	SENSOR, OIL LEVEL
41-4474	20-41-4474	HARNESS & SWITCH, ON/OFF
41-4523	20-41-4523	SWITCH, HPCO
41-4644	20-41-4474	HARNESS & SWITCH, ON/OFF
41-6539	20-41-6539	SENSOR, WATER TEMP.
41-6865	20-41-6865	SWITCH, OIL SAFETY
41-7020	20-41-7020	SWITCH, BINARY
41-7063	20-41-7063	SWITCH, OIL PRESSURE
41-7064	20-41-7064	SWITCH, OIL PRESSURE
41-7068	20-41-7068	SENSOR, WATER TEMP.
41-7638	20-41-7638	HARNESS, WIRE
44-490	10-00072-02	SWITCH, TOGGLE
44-739	66-U---2--1081	SEAL, BOOT, TOGGLE SWITCH

TK #	CARRIER #	DESCRIPTION
44-984	22-00049-00	LAMP, INCANDESCENT
44-1093	22-00518-01	SOCKET, PILOT LIGHT
44-1164	20-44-1164	SWITCH, DEFROST
44-1357	10-00027-01	SWITCH, TOGGLE
44-2039	10-00265-01	REGULATOR, VOLTAGE
44-2100	10-00072-02	SWITCH, TOGGLE
44-2169	30-00171-22	DIODE ASSEMBLY, ALTERNATOR, NEG
44-2853	10-00279-00	CONTACTOR
44-2907	20-44-5305	SWITCH, PRESSURE
44-3018	20-44-3018	SWITCH, WATER SAFETY
44-3155	20-44-3155	SWITCH, DEFROST
44-3183	20-44-3183	SWITCH, GLOW START
44-3186	20-44-3186	RELAY, DEFROST
44-3258	20-44-9302	AMMETER, -50 0 +50
44-3280	10-01120-00	RECTIFIER
44-3473	20-44-3473	HOURLY METER
44-3474	12-01039-08	SWITCH, DIFF PRESSURE
44-3555	12-01039-08	SWITCH, DIFF PRESSURE
44-3711	22-01467-00	LAMP, WEDGE BASE (BULB)
44-3930	20-44-3930	COIL, SOLENOID, 12V
44-4774	20-44-4774	SWITCH
44-5013	20-44-5013	REGULATOR, VOLTAGE
44-5066	22-02430-00	TERMINAL, FEMALE, SPD
44-5175	14-50021-02	COIL, SOLENOID VALVE
44-5234	20-44-5234	SENSOR
44-5236	20-44-5236	SENSOR
44-5277	20-44-5277	SWITCH, PRESSURE
44-5305	20-44-5305	SWITCH, PRESSURE

TK #	CARRIER #	DESCRIPTION
44-5508	20-44-5508	SWITCH, HIGH PRESSURE
44-5512	10-00171-12	BREAKER, CIRCUIT, 30 AMP
44-5537	10-00302-00	RECEPTACLE, RELAY
44-5571	10-00286-00	RELAY
44-5585	66-U---1--7802	HOURLMETER
44-5703	20-44-3473	HOURLMETER
44-5835	22-02392-00SV	CONNECTOR, MALE, 2 PIN
44-5837	22-02394-00	SEAL, CABLE, GREY
44-5838	22-01585-00SK	CONNECTOR, 2 WIRE
44-5839	22-01566-00	TERMINAL, FEMALE, 14-16 GA
44-5883	22-02393-01	TERMINAL, MALE, 18-20 AWG
44-5896	20-44-5896	SENSOR
44-5925	20-44-8526	KIT, MOTOR, 14 VDC
44-6018	20-44-6018	SWITCH, THERMOSTAT
44-6019	20-44-6019	BOLT, THERMISTOR
44-6047	20-44-6047	RELAY
44-6132	20-44-6132	SWITCH, LOW PRESSURE
44-6148	20-44-6148	TIMER, DEFROST
44-6241	12-01039-08	SWITCH, DIFF PRESSURE
44-6242	12-01039-08	SWITCH, DIFF PRESSURE
44-6324	22-02394-01	SEAL, CABLE
44-6463	20-44-6463	SENTRY, BATTERY
44-6534	20-44-6534	SENSOR, COOLANT LEVEL
44-6545	12-01039-08	SWITCH, DIFF PRESSURE
44-6553	20-44-6553	TIMER
44-7172	20-44-7172	MOTOR, DUAL SHAFT, 12VDC
44-7192	20-44-7192	SWITCH, STARTER LOCK OUT
44-7263	20-44-7263	SENTRY, BATTERY

TK #	CARRIER #	DESCRIPTION
44-7315	30-00363-16	HOUSING, FRONT
44-7531	20-44-7531	TIMER, DEFROST
44-7620	20-44-7620	BOOT, RPM SENSOR
44-7711	20-44-7711	SWITCH, HIGH PRESSURE
44-7774	20-44-7774	BREAKER, CIRCUIT
44-7792	20-44-7792	SWITCH, TOGGLE, STEEL
44-7793	20-44-7793	SWITCH, TOGGLE, STEEL
44-7929	20-44-7929	SWITCH, TOGGLE, STEEL
44-7932	20-44-7932	SWITCH, TOGGLE
44-8029	20-44-8029	RELAY
44-8244	20-44-8244	LINK, FUSIBLE
44-8400	20-44-8400	BOLT, THERMISTOR
44-8526	20-44-8526	KIT, MOTOR, 14 VDC
44-8764	10-01165-00	HOURLMETER
44-8883	20-44-8883	SENSOR, OIL PRESSURE
44-9111	10-00286-03	RELAY
44-9302	20-44-9302	AMMETER, -50 0 +50
44-9408	20-44-9408	SWITCH, HPCO, W/CONNECTOR
44-9588	20-44-9588	THERMISTOR, BOLT
55-1600	30-00171-31	KEY, WOODRUFF, ALTERNATOR
66-1153	16-03002-00	LENS, PLASTIC
66-2020	12-01039-08	SWITCH, DIFF PRESSURE
91-9303	20-91-9303	BEZEL, MICRO
92-2356	20-92-2356	WINDOW, MICRO BEZEL
99-1672	58-50006-00	BOOT, SOLENOID

We can repair most electronics; contact your local Carrier Transicold dealer for assistance. See page 35 for more information.

TK #	CARRIER #	DESCRIPTION
<b>Box Remote Control</b>		
45-1866	20-45-1866RB	REMOTE CONTROL, REPAIRED
<b>Cab Controller</b>		
41-2997	20-41-2997RB	CONTROLLER, CAB, REPAIRED
45-1780	20-45-1780RB	CONTROLLER, CAB, REPAIRED
<b>Controller for SR-2</b>		
45-2013	20-45-2013RB	CONTROLLER, SR-2, REPAIRED
45-2267	20-45-2267RB	CONTROLLER, SR-2, REPAIRED
45-2268	20-45-2268RB	CONTROLLER, SR-2, REPAIRED
<b>HMI Display for SR-2</b>		
41-4942	20-41-4942RB	MODULE, DISPLAY, SR-2, REPAIRED
841-6600	20-41-6600RB	MODULE, DISPLAY, SR-2, REPAIRED
<b>HMI Display for SR-3</b>		
45-2306	20-45-2306RB	MODULE, DISPLAY, SR-3, REPAIRED
<b>I/O Module uP IV MT</b>		
41-866	20-41-866RB	MODULE, I/O, uP IV MT, REPAIRED
<b>Interface Board for SR-2</b>		
45-2014	20-45-2014RB	BOARD, INTERFACE, SR-2
45-2148	20-45-2148RB	BOARD, INTERFACE, SR-2
45-2275	20-45-2275RB	BOARD, INTERFACE, SR-2
45-2361	20-45-2361RB	BOARD, INTERFACE, SR-2
845-2014	20-45-2014RB	BOARD, INTERFACE, SR-2
845-2275	20-45-2275RB	BOARD, INTERFACE, SR-2
<b>MT uP VI for SR-2</b>		
45-1963	20-45-1963RB	CONTROLLER, uP VI, MT, with LOGGER
<b>Multi-Temp uP IV</b>		
45-1609	20-45-1609RB	Multi-Temp uP-IV w/o LOGGER
45-1610	20-45-1610RB	Multi-Temp uP-IV with LOGGER
45-1960	20-45-1960RB	Multi-Temp uP-IV w/o LOGGER
45-1961	20-45-1961RB	Multi-Temp uP-IV with LOGGER
845-1960	20-45-1960RB	Multi-Temp uP-IV w/o LOGGER
845-1961	20-45-1961RB	Multi-Temp uP-IV with LOGGER
<b>PC Board</b>		
41-4458	20-41-4458RB	BOARD, PC, REPAIRED
41-5366	20-41-5366RB	BOARD, PC, REPAIRED
45-2219	20-45-2219RB	BOARD, PC, REPAIRED

TK #	CARRIER #	DESCRIPTION
<b>Relay Board uP MT</b>		
41-2783	20-41-2783RB	BOARD, RELAY, uP MT, REPAIRED
41-3348	20-41-3348RB	BOARD, RELAY, uP MT, REPAIRED
41-3562	20-41-3562RB	BOARD, RELAY, uP MT, REPAIRED
41-6931	20-41-6931RB	BOARD, RELAY, uP MT, REPAIRED
41-7288	20-41-7288RB	BOARD, RELAY, uP MT, REPAIRED
41-7423	20-41-7423RB	BOARD, RELAY, uP MT, REPAIRED
<b>Relay Board uP VI</b>		
41-3061	20-41-3061RB	BOARD, RELAY, uP VI, REPAIRED
41-4316	20-41-4316RB	BOARD, RELAY, uP VI, REPAIRED
<b>Relay Board uP VI / VI + / V</b>		
41-0737	20-41-0737RB	BOARD, RELAY, uP VI/VI+/V, REPAIRED
41-3056	20-41-3056RB	BOARD, RELAY, uP VI/VI+/V, REPAIRED
41-3411	20-41-3411RB	BOARD, RELAY, uP VI/VI+/V, REPAIRED
<b>TG-VI Cycle Sentry mP-T</b>		
45-2220	20-45-2220RB	CONTROLLER, TG-VI, REPAIRED
845-2220	20-45-2220RB	CONTROLLER, TG-VI, REPAIRED
<b>Thermoguard uP IV</b>		
845-1600	20-45-1600RB	CONTROLLER, MICRO P IV, w/o LOGGER
845-1601	20-45-1601RB	CONTROLLER, MICRO P IV, with LOGGER
845-2425	20-45-2425RB	CONTROLLER, TGVI, REPAIRED
845-2426	20-45-2426RB	CONTROLLER, MICRO P IV, REPAIRED
845-2427	20-45-2427RB	CONTROLLER, MICRO P IV, REPAIRED
<b>Thermoguard uP V</b>		
45-1579	20-45-1579RB	THERMOSTAT, TG5, REPAIRED
<b>Thermoguard uP V / V+</b>		
45-1789	20-45-1789RB	CONTROLLER, TGV/V+, w/o LOGGER
45-1790	20-45-1790RB	CONTROLLER, TGV/V+, with LOGGER
<b>Thermoguard uP VI</b>		
45-1613	20-45-1613RB	CONTROLLER, TGVI, REPAIRED
45-1625	20-45-1625RB	CONTROLLER, TGVI, REPAIRED
45-1708	20-45-1708RB	CONTROLLER, TGVI, REPAIRED
<b>uP VI w/ Logger for SR-2</b>		
45-1930	20-45-1930RB	CONTROLLER, MP6, REPAIRED
845-1930	20-45-1930RB	CONTROLLER, MP6, REPAIRED



TK # 11-4576  
Carrier # 20-11-4576SV  
Water Pump, C-201



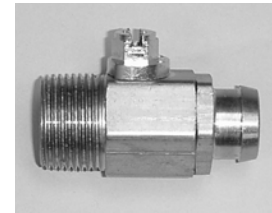
TK # 11-5838  
Carrier # 20-11-5838  
Ring Gear, Flywheel



TK # 11-7486  
Carrier # 20-11-7486  
Dipstick, Oil



TK # 11-7821  
Carrier # 20-11-7821  
Hose, Oil Drain



TK # 11-9338  
Carrier # 20-11-9338  
Valve, Oil Drain



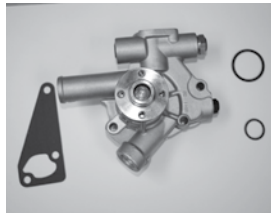
TK # 11-9356  
Carrier # 20-11-9356  
Water Pump, 2.2 DI & SE



TK # 11-9684  
Carrier # 20-11-9684  
Thermostat



TK # 12-765  
Carrier # 20-12-765  
Muffler



TK # 13-506  
Carrier # 20-13-506  
Water Pump



TK # 13-509  
Carrier # 20-13-509  
Water Pump



TK # 33-2535  
Carrier # 20-33-2535  
Seal, Rear Crankshaft, C-201



TK # 41-5459  
Carrier # 20-41-5459  
Solenoid, Throttle



TK # 42-100  
Carrier # 20-42-100  
Solenoid, Stop



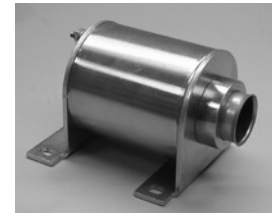
TK # 44-6016  
Carrier # 20-44-6016  
Sensor, RPM w/o Boot



TK # 44-6727  
Carrier # 20-44-6727  
Solenoid, Fuel Shutoff



TK # 44-8198  
Carrier # 20-44-8198  
Plunger



TK # 44-9181  
Carrier # 20-44-9181  
Solenoid, Linear



TK # 44-9298  
Carrier # 20-44-9298  
Sensor, RPM w/o Boot



TK # 77-1591  
Carrier # 20-77-1591  
Pulley, Boss, 2.2DI



TK # 91-3095  
Carrier # 20-91-3095  
Boot, Solenoid



TK # 99-1433  
Carrier # 20-99-1433  
Mount, Shock



TK # 99-1916  
Carrier # 20-99-1916  
Mount, Shock



TK # 99-4482  
Carrier # 20-99-4482  
Rod, Hold Down

# Engine Parts

TK #	CARRIER #	DESCRIPTION
11-2760	25-38666-08	ADAPTER
11-2808	25-38666-07	SPRING, PUMP VALVE
11-2854	25-38666-16	FILTER, SCREEN
11-2916	30-00210-00	CAP, RAIN
11-2923	25-38666-01	PISTON, FUEL PUMP
11-4564	20-11-4564	HOSE, BYPASS
11-4576	20-11-4576SV	WATER PUMP, C-201
11-5406	20-11-5406	CAP, RADIATOR (7 PSI)
11-5826	20-11-5826	BEARING, ROD, 2.2 DI (STD)
11-5833	20-11-5833	WEAR RING, CRANKSHAFT
11-5838	20-11-5838	RING GEAR, FLYWHEEL
11-5861	20-11-5861	HOSE, BYPASS
11-5895	25-38666-11	PUMP, HAND PRIMER
11-5967	20-11-5967	SPEEDI-SLEEVE, CRANK REAR
11-6102	20-11-6102	NOZZLE, INJECTOR
11-6173	20-11-6173	TUBE, EXHAUST
11-6557	20-11-6557	BEARING, MAIN (STD)
11-6845	20-11-6845	SPEEDI-SLEEVE, FRONT
11-7067	20-11-7067	HOSE, OIL DRAIN
11-7259	20-11-7259	SPEEDI-SLEEVE, REAR
11-7433	20-11-7433	PUMP, FUEL
11-7486	20-11-7486	DIPSTICK, OIL
11-7500	20-11-7500	PUMP, FUEL
11-7702	25-10391-01	THERMOSTAT, WATER
11-7757	30-00406-02	INDICATOR, AIR FILTER W/FITTING
11-7821	20-11-7821	HOSE, OIL DRAIN
11-7975	20-11-7975	THERMOSTAT, ENGINE
11-8014	20-11-8014	END, ROD
11-8082	20-11-8082	RING SET, 2.2DI (STD)
11-8711	20-11-8711	ROD, SPEED CONTROL

TK #	CARRIER #	DESCRIPTION
11-8769	20-11-8769	INJECTOR ASSY, 374/395
11-8915	20-13-920	BEARING, MAIN (STD)
11-8934	20-11-8934	SEAL, VALVE STEM
11-8935	20-11-8935	SEAL, VALVE STEM
11-8952	20-11-8952	ROD, CONNECTING
11-9242	20-11-9242	CAP, RADIATOR
11-9338	20-11-9338	VALVE, OIL DRAIN
11-9356	20-11-9356	WATER PUMP, 2.2 DI & SE
11-9451	20-11-9451	WATER PUMP
11-9592	20-11-9592	SPEEDI-SLEEVE
11-9621	20-11-9621	THERMOSTAT, 3.95 ENG.
11-9624	20-11-9624	THERMOSTAT
11-9684	20-11-9684	THERMOSTAT
11-9725	20-11-9725	PUMP, PRIMER
11-9924	20-11-9924	PUMP, FUEL
11-9933	20-11-9933	PISTON, 395 (STD)
12-765	20-12-765	MUFFLER
13-340	20-13-340	GASKET, VALVE COVER
13-341	20-13-341	PROTECTOR, NOZZLE
13-506	20-13-506	WATER PUMP
13-507	20-13-507	WATER PUMP
13-509	20-13-509	WATER PUMP
13-920	20-13-920	BEARING, MAIN (STD)
13-924	20-13-924	BEARING, ROD (STD)
13-954	20-13-954	THERMOSTAT, ENGINE
22-1265	20-22-1265	BEARING SET, ROD (+0.010)
22-1266	20-22-1266	BEARING SET, ROD (+0.030)
22-370	20-22-1265	BEARING SET, ROD (+0.010)
22-371	20-22-1266	BEARING SET, ROD (+0.030)
30-177	20-30-262	GASKET SET, 2.2 DI ENGINE



TK #	CARRIER #	DESCRIPTION
30-180	20-30-251	GASKET KIT, 366 ENGINE
30-197	20-30-197	SEAL KIT, C-201 REAR
30-235	20-30-235	GASKET SET, 3.74 ENGINE
30-236	20-30-236	GASKET KIT, 3.95 ENGINE
30-251	20-30-251	GASKET KIT, 366 ENGINE
30-262	20-30-262	GASKET SET, 2.2 DI ENGINE
30-264	20-30-264	GASKET SET, 486 ENGINE
30-275	20-30-275	GASKET SET
30-278	20-30-278	GASKET SET
33-1506	20-33-1506	SEAL, REAR OIL
33-1520	20-33-1520	GASKET, THERMOSTAT
33-1556	20-33-2881	SEAL, CRANKSHAFT, FRONT
33-1627	20-33-1627	GASKET, CYLINDER HEAD, 2.2DI
33-1630	20-33-1630	GASKET, VALVE COVER
33-1642	20-33-1642	GASKET, OIL PAN, 2.2DI
33-1643	20-33-1643	GASKET, OIL PAN
33-1656	25-37599-00	O-RING, INJECTOR
33-1726	20-33-1726	GASKET, HEAD, 3.66 ENGINE
33-1727	20-33-1727	SEAL, FRONT OIL
33-1742	20-33-1742	GASKET, WATER PUMP
33-1907	25-33020-00	GASKET, EXHAUST (4 BOLT)
33-1952	20-33-4088	SEAL, FRONT OIL
33-2314	20-33-2314	GASKET, EXHAUST
33-2535	20-33-2535	SEAL, REAR CRANKSHAFT, C-201
33-2634	20-33-2634	SEAL, REAR OIL, 2.2DI SE
33-2738	20-33-2738	GASKET, HEAD
33-2759	20-33-2759	SEAL, OIL, AXIAL
33-2767	20-33-2767	GASKET, THERMOSTAT UPPER
33-2768	20-33-2768	GASKET, THERMOSTAT UPPER
33-2880	20-33-2880	SEAL, CRANKSHAFT, REAR

TK #	CARRIER #	DESCRIPTION
33-2881	20-33-2881	SEAL, CRANKSHAFT, FRONT
33-2932	20-33-2932	GASKET, HEAD
33-2974	20-33-2974	SEAL, OIL, REAR AXIAL
33-3096	20-33-3096	GASKET, THERMOSTAT UPPER
33-3097	20-33-3097	GASKET
33-3509	20-33-3509	GASKET, HEAD 395
33-4088	20-33-4088	SEAL, FRONT OIL
33-4210	20-33-4210	GASKET, VALVE COVER
33-487	20-33-487	GASKET, THERMOSTAT HOUSING
33-797	20-33-2535	SEAL, REAR CRANKSHAFT, C-201
41-5459	20-41-5459	SOLENOID, THROTTLE
41-6582	20-41-6582	GLOW PLUG
41-7059	20-41-7059	PUMP, FUEL LIFT
41-7370	20-41-7370	GLOW PLUG, 2.2 DI
42-100	20-42-100	SOLENOID, STOP
42-916	20-42-916	GLOW PLUG
42-989	20-42-989	PUMP, FUEL
44-2260	12-00136-00	GAUGE, OIL PRESSURE
44-2756	22-01030-17	DIODE ASSY, RUN/SPEED SOLENOID
44-2823	10-01095-00	SOLENOID, LINEAR, PULL
44-6016	20-44-6016	SENSOR, RPM W/O BOOT
44-6544	10-01150-00	SOLENOID
44-6727	20-44-6727	SOLENOID, FUEL SHUTOFF
44-8198	20-44-8198	PLUNGER
44-9181	20-44-9181	SOLENOID, LINEAR
44-9298	20-44-9298	SENSOR, RPM W/O BOOT
55-1922	25-38666-13	WASHER, FUEL PIPE
55-1965	25-38666-14	SCREW, HOLLOW
55-2762	34-50009-00	EYE BOLT
55-5524	25-38666-12	SCREW, HOLLOW

# Engine Parts

TK #	CARRIER #	DESCRIPTION
77-1591	20-77-1591	PULLEY, BOSS, 2.2DI
91-2281	20-91-2281	MOUNT, VIBRATION
91-2338	20-91-2338	MOUNT, VIBRATION
91-2619	20-91-2619	MOUNT, ENGINE, SET OF TWO
91-3095	20-91-3095	BOOT, SOLENOID
91-3908	20-91-3908	MOUNT, VIBRATION
91-4043	20-91-4043	MOUNT, SNUBBER
91-4159	20-91-4159	MOUNT, SHOCK

TK #	CARRIER #	DESCRIPTION
91-7709	20-91-7709	ISOLATOR, ENGINE
99-1433	20-99-1433	MOUNT, SHOCK
99-1916	20-99-1916	MOUNT, SHOCK
99-4482	20-99-4482	ROD, HOLD DOWN
99-4820	20-99-4820	MOUNT, VIBRATION



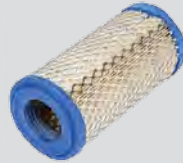
## AIR FILTERS



TK # 11-7234  
Carrier # 20-11-7234  
Filter, Air



TK # 11-7400  
Carrier # 20-12-7400  
Filter, Air



TK # 11-9059  
Carrier # 30-60049-20PK24  
Filter, Air, Element



TK # 11-9300  
Carrier # 20-12-9300-2  
Filter, Air



TK # 92-5701  
Carrier # 20-92-5701  
Filter, Air

## FUEL FILTERS



TK # 11-9342  
Carrier # 20-12-9342S  
Filter, Fuel/Water, With Drain



TK # 13-649  
Carrier # 20-13-649  
Filter, Fuel



TK # 11-9954  
Carrier # 20-12-9954C  
Filter, Fuel



TK # 13-864  
Carrier # 20-13-864  
Filter, Fuel

## OIL FILTERS



TK # 11-6182  
Carrier # 20-12-6182  
Filter, Oil, Cartridge



TK # 11-6228  
Carrier # 20-12-6228  
Filter, Oil Bypass



TK # 11-9182  
Carrier # 20-12-9182C  
Filter, Oil, EMI



TK # 66-7800  
Carrier # 20-66-7800  
Filter, Compressor Oil



## FILTER KITS



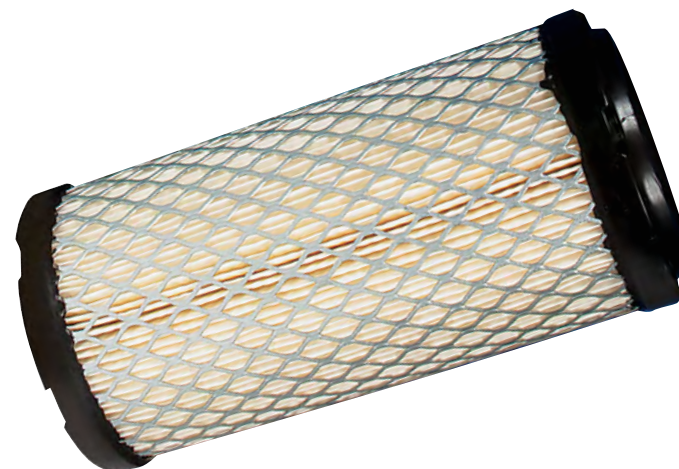
TK # 10-393  
Carrier # 20-10-393  
Filter Kit



TK # 10-395  
Carrier # 20-10-395  
Filter Kit, With Nylon Line



TK # 10-473  
Carrier # 20-10-473  
Filter, Kit



TK #	CARRIER #	DESCRIPTION
<b>Air Filters</b>		
11-7234	20-11-7234	FILTER, AIR
11-7400	20-12-7400	FILTER, AIR
11-9059	30-60049-20PK24	FILTER, AIR, ELEMENT
11-9300	20-12-9300-2	FILTER, AIR
13-658	20-13-658	FILTER, AIR
92-5701	20-92-5701	FILTER, AIR
<b>Fuel Filters</b>		
11-6285	20-12-6285	FILTER, FUEL
11-6286	20-12-6286	FILTER, FUEL
11-7264	20-12-7264	FILTER, FUEL
11-9097	20-12-9097	FILTER, FUEL, PRIMARY
11-9098	20-12-9098	FILTER, FUEL, SECONDARY
11-9103	20-12-9103	FILTER, FUEL, SECONDARY, EMI
11-9341	20-12-9341	FILTER, FUEL, EMI
11-9342	20-12-9342S	FILTER, FUEL/WATER, WITH DRAIN
11-9954	20-12-9954C	FILTER, FUEL/WATER, WITH DRAIN
13-649	20-13-649	FILTER, FUEL
13-864	20-13-864	FILTER, FUEL

TK #	CARRIER #	DESCRIPTION
<b>Oil Filters</b>		
11-6182	20-12-6182	FILTER, OIL, CARTRIDGE
11-6228	20-12-6228	FILTER, OIL BYPASS
11-7382	20-12-7382	FILTER, OIL, DUAL ELEMENT
11-9101	20-12-9101	FILTER, OIL
11-9182	20-12-9182C	FILTER, OIL, EMI
11-9321	20-12-9321	FILTER, OIL BYPASS, EMI
66-7800	20-66-7800	FILTER, COMPRESSOR OIL
<b>Filter Kits for TriPac®*</b>		
10-393	20-10-393	FILTER KIT
10-395	20-10-395	FILTER KIT, WITH NYLON LINE
10-473	20-10-473	FILTER, KIT

\*TriPac is a registered trademark of Thermo King Corporation.



TK # 11-5909  
Carrier # 20-11-5909  
Hose, Coolant, EPDM



TK # 11-9529  
Carrier # 20-11-9529  
Hose, Coolant



TK # 66-1224  
Carrier # 20-66-1224  
Vibrasorber



TK # 66-4961  
Carrier # 20-66-4961  
Hose, Teflon



TK # 66-5150  
Carrier # 20-66-5150  
Hose, Teflon



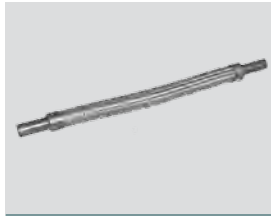
TK # 66-5175  
Carrier # 20-66-5175  
Hose, Teflon



TK # 66-5176  
Carrier # 20-66-5176  
Hose, Teflon



TK # 66-5717  
Carrier # 20-66-5717  
Vibrasorber, Suction



TK # 66-5784  
Carrier # 20-66-5784  
Vibrasorber



TK # 66-6024  
Carrier # 20-66-6024  
Vibrasorber, Suction



TK # 66-6968  
Carrier # 20-66-6968  
Vibrasorber



TK # 66-7848  
Carrier # 20-66-7848  
Vibrasorber, Discharge

TK #	CARRIER #	DESCRIPTION
11-3679	58-00615-01	ASSY, HOSE, 18 LG
11-5909	20-11-5909	HOSE, COOLANT, EPDM
11-9529	20-11-9529	HOSE, COOLANT
66-1224	20-66-1224	VIBRASORBER
66-3379	20-66-5784	VIBRASORBER
66-4961	20-66-4961	HOSE, TEFLON
66-5150	20-66-5150	HOSE, TEFLON
66-5175	20-66-5175	HOSE, TEFLON

TK #	CARRIER #	DESCRIPTION
66-5176	20-66-5176	HOSE, TEFLON
66-5717	20-66-5717	VIBRASORBER, SUCTION
66-5784	20-66-5784	VIBRASORBER
66-5964	20-66-5964	VIBRASORBER, SUCTION
66-6024	20-66-6024	VIBRASORBER, SUCTION
66-6968	20-66-6968	VIBRASORBER
66-7848	20-66-7848	VIBRASORBER, DISCHARGE

# Refrigeration



TK # 41-1521  
Carrier # 20-41-1521  
Coil, 12V, 18" Wire Leads



TK # 41-1525  
Carrier # 20-41-1525  
Coil, 12V, Threaded Studs



TK # 60-107  
Carrier # 20-60-298  
Kit, Throttling Valve Repair



TK # 60-147  
Carrier # 20-60-147  
Screen, w/Gasket, 3-Way Valve



TK # 60-156  
Carrier # 20-60-156  
Kit, Stem



TK # 60-181  
Carrier # 20-60-181  
Repair Kit, Valve Internal



TK # 60-186  
Carrier # 20-60-186  
Repair Kit, Solenoid Valve



TK # 60-203  
Carrier # 20-60-203  
Repair Kit, Valve



TK # 60-246  
Carrier # 20-60-246  
Kit, Solenoid Repair



TK # 60-298  
Carrier # 20-60-298  
Kit, Throttling Valve Repair



TK # 61-283  
Carrier # 20-61-283  
Valve, Solenoid NC



TK # 61-600  
Carrier # 20-68-600  
Filter Drier



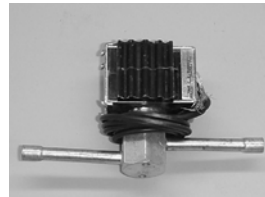
TK # 61-3597  
Carrier # 20-61-3597  
Cap, 3-Way Valve



TK # 66-129  
Carrier # 20-66-129  
Valve, Service Discharge



TK # 66-2009  
Carrier # 20-66-2009  
Valve, Solenoid



TK # 66-5374  
Carrier # 20-66-5374  
Valve, Solenoid, w/Coil, 12V



TK # 66-5908  
Carrier # 20-66-5908  
Valve, Pilot Solenoid



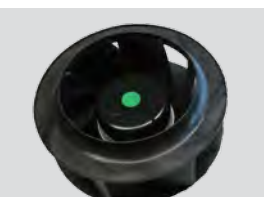
TK # 66-7392  
Carrier # 20-66-7392  
Valve, Pressure Relief



TK # 66-7636  
Carrier # 20-66-7636  
Valve, Pilot Solenoid



TK # 66-8560  
Carrier # 20-66-8560  
Valve, Pilot Solenoid



TK # 78-1554  
Carrier # 54-50112-00  
Fan Assy, 12V, 2 Speed



TK # 78-1886  
Carrier # 54-50112-00  
Fan Assy, 12V, 2 Speed

TK #	CARRIER #	DESCRIPTION
30-155	66-U---1--6225	GASKET SET, TXV
33-950	20-33-2550	GASKET, 3 WAY VALVE
41-593	17-60085-00	COIL, 12V FOR QP COMPRESSOR
41-1521	20-41-1521	COIL, 12V, 18" WIRE LEADS
41-1525	20-41-1525	COIL, 12V, THREADED STUDS
41-7006	20-41-7006	BLOWER ASSY
44-2814	20-44-2814	GAUGE, WATER TEMP
55-5672	--DD--19CA-061	CAP, 1/4" SHRADER VALVE
60-107	20-60-298	KIT, THROTTLING VALVE REPAIR
60-147	20-60-147	SCREEN, W/GASKET, 3-WAY VALVE
60-156	20-60-156	KIT, STEM
60-158	16-00124-00	SEAT, CHECK VALVE
60-181	20-60-181	REPAIR KIT, VALVE INTERNAL
60-186	20-60-186	REPAIR KIT, SOLENOID VALVE
60-203	20-60-203	REPAIR KIT, VALVE
60-246	20-60-246	KIT, SOLENOID REPAIR
60-298	20-60-298	KIT, THROTTLING VALVE REPAIR
60-300	20-60-300	KIT, VALVE STEM
61-283	20-61-283	VALVE, SOLENOID NC
61-600	20-68-600	FILTER DRIER
61-800	20-68-800	FILTER DRIER
61-3316	20-61-3316	RECEIVER DRIER
61-3467	20-61-3467	GAUGE, THERMO
61-3552	20-61-3552	FILTER DRIER

TK #	CARRIER #	DESCRIPTION
61-3597	20-61-3597	CAP, 3-WAY VALVE
66-129	20-66-129	VALVE, SERVICE DISCHARGE
66-508	14-50030-00	FILTER DRIER
66-527	12-00003-00	GAUGE, SUCTION PRESS
66-814	14-01063-03	FILTER DRIER
66-1185	20-66-1185	VALVE ASSY, TXV
66-2009	20-66-2009	VALVE, SOLENOID
66-3644	14-00029-04	VALVE, CHECK, 5/8" ODF
66-4900	14-50034-00	FILTER DRIER
66-5374	20-66-5374	VALVE, SOLENOID, W/COIL, 12V
66-5908	20-66-5908	VALVE, PILOT SOLENOID
66-7392	20-66-7392	VALVE, PRESSURE RELIEF
66-7636	20-66-7636	VALVE, PILOT SOLENOID
66-8065	20-66-8065	FILTER DRIER
66-8548	20-66-8548	SEPERATOR, OIL
66-8560	20-66-8560	VALVE, PILOT SOLENOID
66-8718	20-66-8718	FILTER DRIER
70-214	20-70-214SV	FAN ASSY, CONDENSER, W/HARNES
78-558	20-78-558	FAN, EVAPORATOR
78-1185	20-78-1185	FAN ASSY, 255MM, 12V, DRAW
78-1554	54-50112-00	FAN ASSY, 12V, 2 SPEED
78-1886	54-50112-00	FAN ASSY, 12V, 2 SPEED
99-1142	58-01071-00	TUBING, VINYL, .187 ID
#N/A	20-61-3316-WOS	RECEIVER DRIER (WITHOUT SWITCH)

# Starters



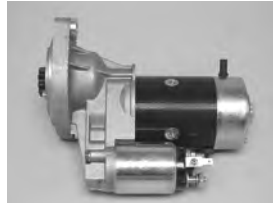
TK # 44-5674  
Carrier # 20-45-1285  
Starter



TK # 45-1251  
Carrier # 20-45-1251  
Starter



TK # 45-1263  
Carrier # 20-45-1993  
Starter, 2.2DI Engine



TK # 45-1285  
Carrier # 20-45-1285  
Starter



TK # 45-1312  
Carrier # 20-45-1718  
Starter



TK # 45-1671  
Carrier # 20-45-1993  
Starter, 2.2DI Engine



TK # 45-1688  
Carrier # 20-45-1688  
Starter, 486, Tier I



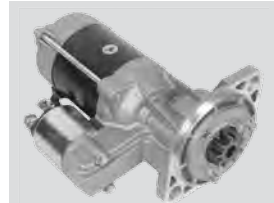
TK # 45-1718  
Carrier # 20-45-1718  
Starter



TK # 45-1993  
Carrier # 20-45-1993  
Starter, 2.2DI Engine



TK # 45-2176  
Carrier # 20-45-2176  
Starter, Tier 2



TK # 45-2177  
Carrier # 20-45-2324  
Starter, Tier 2/4I



TK # 45-2324  
Carrier # 20-45-2324  
Starter, 486 Tier 2/4I



TK # 845-1312  
Carrier # 20-45-2326RM  
Starter, Reman, Truck



TK # 845-1688  
Carrier # 20-45-2323RM  
Starter, Reman, Tier I



TK # 845-2323  
Carrier # 20-45-2323RM  
Starter, Reman, Tier I



TK # 845-2324  
Carrier # 20-45-2324RM  
Starter, Reman, Tier 2 486 Engine



TK # 845-2325  
Carrier # 20-45-2325RM  
Starter, Reman, DI/SE

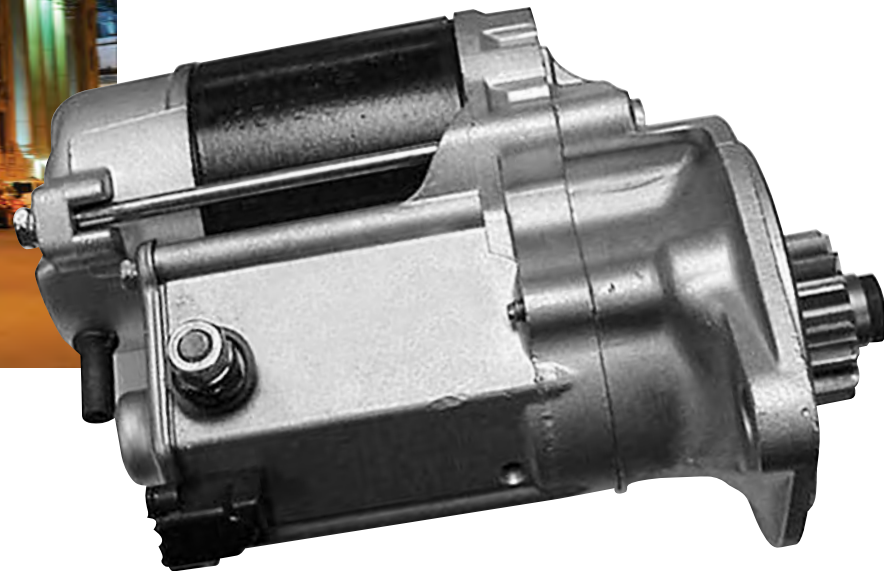


TK # 845-2326  
Carrier # 20-45-2326RM  
Starter, Reman, Truck



TK #	CARRIER #	DESCRIPTION
44-5674	20-45-1285	STARTER
45-1251	20-45-1251	STARTER
45-1263	20-45-1993	STARTER, 2.2DI ENGINE
45-1285	20-45-1285	STARTER
45-1312	20-45-1718	STARTER
45-1671	20-45-1993	STARTER, 2.2DI ENGINE
45-1688	20-45-1688	STARTER, 486, TIER I
45-1718	20-45-1718	STARTER
45-1993	20-45-1993	STARTER, 2.2DI ENGINE
45-2176	20-45-2176	STARTER, TIER 2
45-2177	20-45-2324	STARTER, TIER 2/4I

TK #	CARRIER #	DESCRIPTION
45-2324	20-45-2324	STARTER, 486 TIER 2/4I
845-1251	20-45-1251RM	STARTER, REMAN
845-1285	20-45-1285RM	STARTER, REMAN
845-1312	20-45-2326RM	STARTER, REMAN, TRUCK
845-1688	20-45-2323RM	STARTER, REMAN, TIER I
845-1724	20-45-1724RM	STARTER, REMAN
845-2176	20-45-2176RM	STARTER, REMAN, 270
845-2323	20-45-2323RM	STARTER, REMAN, TIER I
845-2324	20-45-2324RM	STARTER, REMAN, TIER 2 486 ENGINE
845-2325	20-45-2325RM	STARTER, REMAN, DI/SE
845-2326	20-45-2326RM	STARTER, REMAN, TRUCK



# APU Parts for TriPac®\*

TK #	CARRIER #	DESCRIPTION	TIER 1 ENGINE	TIER 2 ENGINE
10-393	20-10-393	FILTER KIT		•
10-395	20-10-395	FILTER KIT, WITH NYLON LINE		•
10-473	20-10-473	FILTER, KIT, EVOLUTION		
11-5967	20-11-5967	SPEEDI-SLEEVE, CRANK REAR	•	
11-6026	20-11-6026	BEARING, MAIN	•	
11-6038	20-11-6038	VALVE GUIDE	•	
11-6039	20-11-6039	VALVE, INTAKE	•	
11-6040	20-11-6040	VALVE, EXHAUST	•	
11-6077	20-11-6077	BEARING, CONNECTING ROD	•	
11-6182	20-12-6182	FILTER, OIL, CARTRIDGE	•	•
11-8769	20-11-8769	INJECTOR ASSY, 374/395	•	
11-9059	30-60049-20PK24	FILTER, AIR, ELEMENT	•	•
11-9342	20-12-9342S	FILTER, FUEL/WATER, WITH DRAIN	•	•
13-649	20-13-649	FILTER, FUEL	•	•
13-658	20-13-658	FILTER, AIR		•
13-864	20-13-864	FILTER, FUEL		•
13-948	20-13-948	WATER PUMP		•
13-954	20-13-954	THERMOSTAT, ENGINE		•
33-672	20-33-672	O-RING, OIL REGULATOR	•	•
33-1015	42-00243-09	O-RING .364 ID X .070 THK	•	•
33-1506	20-33-1506	SEAL, REAR OIL	•	•
33-1727	20-33-1727	SEAL, FRONT OIL	•	•
33-1732	20-33-1732	VALVE STEM SEAL	•	
33-1742	20-33-1742	GASKET, WATER PUMP	•	
33-1744	20-33-1744	O-RING, THERMOSTAT	•	
33-1907	25-33020-00	GASKET, EXHAUST (4 BOLT)	•	
33-2230	20-33-2230	O-RING	•	•
40-872	20-40-975	SENSOR, UNGRADED		•
40-975	20-40-975	SENSOR, UNGRADED		•
41-593	17-60085-00	COIL, 12V FOR QP COMPRESSOR	•	•
41-3318	20-41-3318	RELAY		•
41-6582	20-41-6582	GLOW PLUG	•	•

TK #	CARRIER #	DESCRIPTION	TIER 1 ENGINE	TIER 2 ENGINE
41-6990	20-42-367	ALTERNATOR, 65 AMP, CCW	•	•
41-7006	20-41-7006	BLOWER ASSY	•	•
41-7020	20-41-7020	SWITCH, BINARY	•	•
41-7509	20-41-7509	SWITCH, HPCO		•
41-7638	20-41-7638	HARNESS, WIRE		•
41-8463	20-41-8463	ALTERNATOR, 65 AMP		•
42-100	20-42-100	SOLENOID, STOP	•	•
42-367	20-42-367	ALTERNATOR, 65 AMP, CCW	•	•
42-916	20-42-916	GLOW PLUG	•	•
42-989	20-42-989	PUMP, FUEL		•
44-739	66-U---2--1081	SEAL, BOOT, TOGGLE SWITCH	•	•
44-1357	10-00027-01	SWITCH, TOGGLE	•	•
44-3018	20-44-3018	SWITCH, WATER SAFETY	•	•
44-5537	10-00302-00	RECEPTACLE, RELAY		•
44-5835	22-02392-00SV	CONNECTOR, MALE, 2 PIN		•
44-5838	22-01585-00SK	CONNECTOR, 2 WIRE		•
44-6018	20-44-6018	SWITCH, THERMOSTAT	•	•
44-7192	20-44-7192	SWITCH, STARTER LOCK OUT	•	•
44-7774	20-44-7774	BREAKER, CIRCUIT	•	•
44-8400	20-44-8400	BOLT, THERMISTER		•
44-9111	10-00286-03	RELAY		•
44-9143	20-44-9143	REGULATOR, VOLTAGE	•	•
44-9298	20-44-9298	SENSOR, RPM W/O BOOT	•	•
45-2176	20-45-2176	STARTER, TIER 2		•
45-2256	20-45-2256	ALTERNATOR, 65 AMP	•	•
45-2258	20-45-2258	ALTERNATOR, 120 AMP		•
45-2259	20-45-2259	ALTERNATOR, 120 AMP, CCW		•
55-1983	40-00086-04	CAP, FLARE, SERVICE VALVE, 1/4"	•	•
55-9403	20-55-9403	FITTING, 90, 3/8" FEMALE-0 #6	•	•
55-9404	20-55-9404	FITTING, 90, 1/2" FEMALE-0 #8	•	•
55-9405	20-55-9405	FITTING, 90, 5/8" FEMALE-0 #10	•	•
55-9406	20-55-9406	FITTING, 90, 3/4" FEMALE-0 #12	•	•

TK #	CARRIER #	DESCRIPTION	TIER 1 ENGINE	TIER 2 ENGINE
55-9407	20-55-9407	FITTING, 90, 3/8" ORS #6 HOSE	•	•
55-9408	20-55-9408	FITTING, 90, 1/2" ORS #8 HOSE	•	•
55-9409	20-55-9409	FITTING, 90, 5/8" ORS #10 HOSE	•	•
55-9410	20-55-9410	FITTING, 90, 3/4" ORS #12 HOSE	•	•
55-9411	20-55-9411	CAGE, #6 HOSE	•	•
55-9412	20-55-9412	CAGE, #8 HOSE	•	•
55-9413	20-55-9413	CAGE, #10 HOSE	•	•
55-9414	20-55-9414	CAGE, #12 HOSE	•	•
55-9415	20-55-9415	CLIP, #6 HOSE	•	•
55-9416	20-55-9416	CLIP, #8 HOSE	•	•
55-9417	20-55-9417	CLIP, #10 HOSE	•	•
55-9418	20-55-9418	CLIP, #12 HOSE	•	•
55-9446	20-55-9446	FITTING, 90, 3/8" FEMALE-0 #8	•	•
55-9447	20-55-9447	FITTING, 90, 1/2" FEMALE-0 #10	•	•
55-9448	20-55-9448	FITTING, 90, 5/8" FEMALE-0 #12	•	•
55-9450	20-55-9450	FITTING, STR, 3/8" FEMALE-0 #8	•	•
55-9451	20-55-9451	FITTING, STR, 5/8" FEMALE-0 #12	•	•
55-9520	20-55-9520	FITTING, 90, 5/8" ORS #12 HOSE	•	•
55-9521	20-55-9521	FITTING, STR, 1/2" ORS #8 HOSE	•	•
55-9522	20-55-9522	FITTING, STR, 5/8" ORS #10 HOSE	•	•
55-9524	20-55-9524	FITTING, 45, 1/2" ORS #8 HOSE	•	•
55-9525	20-55-9525	FITTING, 45, 5/8" ORS #10 HOSE	•	•
55-9526	20-55-9526	FITTING, STR, 1/2" FEMALE-0 #8	•	•
55-9527	20-55-9527	FITTING, STR, 1/2" FEMALE-0 #10	•	•
55-9528	20-55-9528	FITTING, STR, 5/8" FEMALE-0 #10	•	•
55-9531	20-55-9531	FITTING, STR, 5/8" O-RING #10 HOSE	•	•
55-9535	20-55-9535	FITTING, STR, 1/2" O-RING #8 HOSE	•	•
55-9536	20-55-9536	FITTING, STR, 1/2" O-RING #10 HOSE	•	•
55-9537	20-55-9537	FITTING, STR, 5/8" O-RING #12 HOSE	•	•
55-9596	20-55-9596	FITTING, WITH HIGH SIDE PORT	•	•
55-9685	20-55-9685	FITTING, STR, 3/8" ORS #6 HOSE	•	•
61-617	20-61-617	HOSE, #6, 5/16", 50 FT	•	•

TK #	CARRIER #	DESCRIPTION	TIER 1 ENGINE	TIER 2 ENGINE
61-627	20-61-627	HOSE, #8, 13/32", 50 FT	•	•
61-637	20-61-637	HOSE, #10, 1/2", 50 FT	•	•
61-643	20-61-643	HOSE, #12, 5/8", 50 FT	•	•
61-3316	20-61-3316	RECEIVER DRIER	•	•
#N/A	20-61-3316-WOS	RECEIVER DRIER (WITHOUT SWITCH)	•	•
61-3552	20-61-3552	FILTER DRIER		•
67-1708	20-67-1708	HOSE, #6 300 FT REEL	•	•
67-1709	20-67-1709	HOSE, #8 300 FT REEL	•	•
67-1710	20-67-1710	HOSE, #10 300 FT REEL	•	•
67-1711	20-67-1711	HOSE, #12 300 FT REEL	•	•
70-214	20-70-214SV	FAN ASSY, CONDENSER, W/HARNES	•	•
78-1012	20-78-1012	BELT, WATER PUMP	•	•
78-1484	20-78-1484	BELT, POLYRIB 6		•
78-1492	20-78-1492	BELT, WATER PUMP		•
78-1535	20-78-1535	FAN, PRECOOL COIL		•
78-1543	20-78-1543	BELT	•	•
78-1560	20-78-1560	FAN, CONDENSER		•
78-1634	20-78-1634	BELT		•
78-1655	20-78-1655	BELT		•
92-5701	20-92-5701	FILTER, AIR		•
102-580	20-102-870	COMP., TM15, 12V, POLY8 GRV, W/MAN	•	•
102-870	20-102-870	COMP., TM15, 12V, POLY8 GRV, W/MAN	•	•
102-963	20-102-870	COMP., TM15, 12V, POLY8 GRV, W/MAN	•	•
107-241	17-60084-00	CLUTCH, 12V, POLY V8	•	•
107-242	17-60081-00	CLUTCH, 12V, POLY V6	•	•
107-261	17-60079-00	CLUTCH, 12V, POLY V6	•	•
107-311	17-60080-00	CLUTCH, 24V, 2 AMP, GROOVE	•	•
845-2176	20-45-2176RM	STARTER, REMAN, 270		•
845-2256	20-45-2256RM	ALTERNATOR, REMAN 65 AMP	•	•
845-2258	20-45-2258RM	ALTERNATOR, REMAN 120 AMP		•
91-2338	20-91-2338	MOUNT, VIBRATION	•	•

\*TriPac is a registered trademark of Thermo King Corporation.

# We build confidence into our 20 Series parts

Supported by 180  
Carrier Transicold dealers  
in North America

## 20 Series Replacement Compressors

Not just repaired. **Totally rebuilt.** The value in our product isn't what it costs you.  
It's what it **saves** you.

- 2-year limited warranty\* – dealer installed
- 1-year limited warranty\* – over the counter

X430 Compressors	Carrier PN
X430 Large Shaft C3	20-X430LS-C3
X430 Large Shaft C3 - 7 Qt. Sump	20-X430LS-C3-7Q
X430 Large Shaft C5	20-X430LS-C5
X430 Large Shaft C5 - 7 Qt. Sump	20-X430LS-C5-7Q



Competitively priced

Carrier-backed

Our **World-Class Electronic Repair Service** offers a money-saving alternative to new replacement electronics.

Features	Carrier Benefit
Repairs available for Thermo King & Carrier® electronics	✓
Quick turnaround	✓
Repaired to Carrier Transicold's high quality standards	✓
Thorough diagnostic testing	✓



All Repaired Electronics have a **1-year Limited Warranty.\***

\*Warranty: Product warranty and limitations are outlined in Form 62-10670.





TK #	CARRIER #	DESCRIPTION	TRAILER													TRUCK																			
			Precedent® C-600	Precedent® S-600	SB-100	SB-110	SB-190	SB-200	SB-210	SB-230	SB-300	SB-310	SB-400	SB-II	SB-III	Sentry	Super-II	Spectrum® DE	Spectrum® SB	Spectrum® Super II	TD-II	TS-200	TS-300	TS-500	MD-II	MD-100	MD-200	MD-300	RD-II	Spectrum® TS	Heat King®	TriPac®			
11-5903	20-11-5903	PISTON			•		•								•	•	•	•																	
11-5904	20-11-5904	PISTON ASSY, +1.00 W/RINGS			•		•								•	•	•	•																	
11-5909	20-11-5909	HOSE, COOLANT, EPDM													•	•																			
11-5946	44-00046-16	CAP, FUEL			•	•	•	•	•	•	•	•	•	•	•	•	•	•	•	•	•	•	•	•	•	•	•	•	•	•	•	•	•	•	•
11-5967	20-11-5967	SPEEDI-SLEEVE, CRANK REAR																			•			•	•					•	•	•	•	•	
11-6017	20-11-6017	PUMP, OIL, 2.2DI			•		•								•	•	•	•																	
11-6023	20-11-6023	RINGS (.50MM O/S), 366 ENGINE																							•										•
11-6026	20-11-6026	BEARING, MAIN																				•	•		•	•	•	•						•	•
11-6027	20-11-6027	BEARING, MAIN, .25MM US																				•	•		•	•	•	•							
11-6028	20-11-6028	THRUST WASHER (STD)																				•	•		•	•	•	•							
11-6038	20-11-6038	VALVE GUIDE																				•	•		•	•	•	•						•	•
11-6039	20-11-6039	VALVE, INTAKE																				•	•		•	•	•	•						•	•
11-6040	20-11-6040	VALVE, EXHAUST																				•	•		•	•	•	•						•	•
11-6072	20-11-6072	RINGS, 366 ENGINE (STD)																							•										
11-6075	20-11-6075	ROD, CONNECTING																				•	•		•	•	•	•							
11-6077	20-11-6077	BEARING, CONNECTING ROD																				•	•		•	•	•	•					•	•	
11-6078	20-11-6078	BUSHING, PIN (STD)																				•	•		•	•	•	•							
11-6100	20-11-6100	NOZZLE, INJECTION																				•			•										
11-6102	20-11-6102	NOZZLE, INJECTOR																				•	•	•	•	•	•	•	•	•	•	•	•	•	•
11-6133	20-11-6133	PUMP, OIL																				•	•		•	•	•	•							
11-6173	20-11-6173	TUBE, EXHAUST																				•	•	•	•	•	•	•	•	•	•	•	•	•	•
11-6182	20-12-6182	FILTER, OIL, CARTRIDGE																				•	•	•	•	•	•	•	•	•	•	•	•	•	•
11-6228	20-12-6228	FILTER, OIL BYPASS																				•	•	•	•	•	•	•	•	•	•	•	•	•	•
11-6285	20-12-6285	FILTER, FUEL														•		•																	
11-6286	20-12-6286	FILTER, FUEL																																	
11-6557	20-11-6557	BEARING, MAIN (STD)																				•		•							•	•			
11-6558	20-11-6558	WASHER, THRUST (STD)																				•		•							•	•			
11-6568	20-11-6568	VALVE, INTAKE																				•									•				
11-6569	20-11-6569	VALVE, EXHAUST																				•		•							•	•			
11-6574	20-11-6574	VALVE GUIDE																				•		•							•	•			
11-6601	20-11-6601	RINGS, 388 ENGINE (STD)																				•									•				
11-6606	20-11-6606	BUSHING, PIN (STD)																				•		•							•	•			
11-6607	20-11-6607	BEARING, CONNECTING ROD (STD)																				•		•							•	•			
11-6610	20-11-6610	PUMP, OIL																				•		•							•	•			
11-6845	20-11-6845	SPEEDI-SLEEVE, FRONT														•		•																	
11-6863	20-11-6863	SPEEDI-SLEEVE 1" SHAFT			•	•	•	•	•	•	•	•	•	•	•	•	•	•	•	•	•	•	•	•	•	•	•	•	•	•	•	•	•	•	•
11-6976	20-11-6976	BEARING, CAMSHAFT																				•		•							•	•			
11-7022	20-11-7022	PISTON ASSY, W/RINGS (STD), 366 ENGINE																							•										
11-7023	20-11-7023	PISTON ASSY, W/RINGS (.25MM O/S), 366 ENGINE																							•										
11-7024	20-11-7024	PISTON ASSY, W/RINGS (.50MM O/S), 366 ENGINE																							•										

\*Model names are property of Thermo King Corporation









TK #	CARRIER #	DESCRIPTION	TRAILER													TRUCK																
			Precedent® C-600	Precedent® S-600	SB-100	SB-110	SB-190	SB-200	SB-210	SB-230	SB-300	SB-310	SB-400	SB-II	SB-III	Sentry	Super-II	Spectrum® DE	Spectrum® SB	Spectrum® Super II	TD-II	TS-200	TS-300	TS-500	MD-II	MD-100	MD-200	MD-300	RD-II	Spectrum® TS	Heat King®	TriPac®
22-568	20-22-568	VALVE, CHECK	•	•	•	•	•	•	•	•	•	•	•	•	•	•	•	•	•	•	•									•		
22-580	20-22-1160	PUMP, COMPRESSOR OIL, X-STYLE	•	•	•	•	•	•	•	•	•			•	•	•	•	•	•	•	•	•				•	•	•	•	•		
22-586	20-22-586	CRANKSHAFT, X426 (FORGED)												•	•	•						•								•		
22-608	20-22-608	SLEEVE, CYLINDER, D214, X214																							•	•	•	•				
22-611	20-22-611	TUBE, OIL PICKUP	•	•	•	•	•	•	•	•	•			•	•	•	•	•	•	•	•	•								•		
22-639	20-22-639	ROD, CONNECTING	•	•	•	•	•	•	•	•	•			•	•	•	•	•	•	•	•	•				•	•	•	•	•		
22-653	20-22-653	VALVE, CHECK	•	•	•	•	•	•	•	•	•			•	•	•	•	•	•	•	•	•				•	•	•	•	•		
22-654	20-22-655	CRANKSHAFT, X430 (FORGED)					•		•					•	•	•	•					•								•		
22-655	20-22-655	CRANKSHAFT, X430 (FORGED)					•		•					•	•	•	•					•								•		
22-656	20-22-656	SLEEVE, CYLINDER, X430	•	•			•	•	•	•	•			•	•	•	•	•	•	•	•	•								•		
22-662	20-22-850	PISTON, X430 COMPRESSOR	•	•			•	•	•	•	•			•	•	•	•	•	•	•	•	•								•		
22-663	20-22-663	HOUSING, OIL PUMP, X430					•	•	•		•			•	•	•	•	•	•	•	•	•								•		
22-723	20-22-723	FLANGE, COMPRESSOR			•		•		•					•	•	•	•				•											
22-735	20-22-735	MANIFOLD, X430 DISCHARGE												•	•		•				•									•		
22-777	20-22-777	SHAFT SEAL, COMPRESSOR																								•						
22-778	20-22-778	SEAL, COMPRESSOR												•	•	•	•				•									•		
22-784	20-22-784	REGULATOR, OIL PRESS	•	•	•	•	•	•	•	•	•			•	•	•	•	•	•	•	•	•				•	•	•	•	•		
22-786	20-22-786	REED, SUCTION																														
22-787	20-22-787	VALVE, CHECK, COMPRESSOR	•	•	•	•	•	•	•	•	•			•	•	•	•	•	•	•	•	•								•		
22-788	20-22-789	HEAD, COMPRESSOR, W/O TAPPED HOLE	•	•						•																•	•	•	•			
22-789	20-22-789	HEAD, COMPRESSOR, W/O TAPPED HOLE	•	•						•																•	•	•	•			
22-804	20-22-804	CRANKSHAFT, X214																								•	•	•	•			
22-849	20-22-849	PISTON, D214/246/X246			•	•								•	•	•					•					•	•	•	•	•		
22-850	20-22-850	PISTON, X430 COMPRESSOR	•	•			•	•	•	•	•			•	•	•	•	•	•	•	•	•								•		
22-899	20-22-899	SHAFT SEAL, X214																								•	•	•	•			
22-990	20-22-990	VALVE PLATE ASSEMBLY	•	•	•	•	•	•	•	•	•			•	•	•	•	•	•	•	•	•					•	•	•	•		
23-123	20-23-123	BODY, X430 COMPRESSOR												•	•	•	•				•									•		
23-129	20-23-129	BODY, X430 COMPRESSOR					•							•	•	•	•	•	•	•	•	•								•		
30-148	20-30-148	GASKET SET, HEAD												•	•																	
30-155	66-U---1--6225	GASKET SET, TXV																														
30-174	20-30-174	GASKET KIT																														
30-175	20-30-175	GASKET, SET, C-201 ENGINE												•	•																	
30-177	20-30-262	GASKET SET, 2.2 DI ENGINE			•		•							•	•	•	•			•												
30-180	20-30-251	GASKET KIT, 366 ENGINE																								•				•		•
30-184	20-30-243	GASKET KIT, COMPRESSOR, X426 & X430	•	•	•	•	•	•	•	•	•			•	•	•	•	•	•	•	•	•								•		
30-197	20-30-197	SEAL KIT, C-201 REAR												•	•																	
30-235	20-30-235	GASKET SET, 3.74 ENGINE																								•	•	•	•			
30-236	20-30-236	GASKET KIT, 3.95 ENGINE																												•	•	
30-241	20-30-261	GASKET KIT, 388 ENGINE																														
30-243	20-30-243	GASKET KIT, COMPRESSOR, X426 & X430	•	•	•	•	•	•	•	•	•			•	•	•	•	•	•	•	•	•								•		

\*Model names are property of Thermo King Corporation





TK #	CARRIER #	DESCRIPTION	TRAILER																TRUCK													
			Precedent® C-600	Precedent® S-600	SB-100	SB-110	SB-190	SB-200	SB-210	SB-230	SB-300	SB-310	SB-400	SB-II	SB-III	Sentry	Super-II	Spectrum® DE	Spectrum® SB	Spectrum® Super II	TD-II	TS-200	TS-300	TS-500	MD-II	MD-100	MD-200	MD-300	RD-II	Spectrum® TS	Heat King®	TriPac®
33-2805	20-33-2805	GASKET, MANIFOLD "WIRE" TYPE	•	•	•	•	•	•	•	•	•	•	•	•	•	•	•	•	•	•	•				•	•	•	•				
33-2815	20-33-2815	GASKET, VALVE																							•	•	•	•				
33-2880	20-33-2880	SEAL, CRANKSHAFT, REAR			•		•							•	•	•	•			•												
33-2881	20-33-2881	SEAL, CRANKSHAFT, FRONT			•		•							•	•	•	•			•												
33-2927	20-33-2927	GASKET, HEAD																				•							•			
33-2932	20-33-2932	GASKET, HEAD				•		•	•			•	•	•		•		•	•	•	•											
33-2935	20-33-2935	GASKET, VALVE COVER, 482/486				•		•	•			•	•	•		•		•	•	•	•											
33-2956	20-33-2956	SEAL, TEFLON, 3-WAY VALVE			•	•	•	•	•			•	•	•	•	•						•		•	•	•	•	•	•	•	•	
33-2974	20-33-2974	SEAL, OIL, REAR AXIAL	•	•		•		•	•	•	•	•	•	•	•	•	•	•	•	•												
33-3004	20-33-3004	SEAL, LIP			•	•	•	•	•			•	•	•	•	•	•	•	•	•												
33-3096	20-33-3096	GASKET, THERMOSTAT UPPER	•	•		•		•	•	•	•	•	•	•	•	•	•	•	•	•												
33-3097	20-33-3097	GASKET	•	•		•		•	•	•	•	•	•	•	•	•	•	•	•	•												
33-3098	20-33-3098	O-RING	•	•		•		•	•	•	•	•	•	•	•	•	•	•	•	•												
33-3477	20-33-3477	GASKET																				•		•					•	•		
33-3509	20-33-3509	GASKET, HEAD 395																				•		•						•	•	
33-3797	20-33-3797	GASKET, OIL PAN, 7QT	•	•											•		•	•	•	•												
33-3818	20-33-3818	GASKET, CYLINDER HEAD																						•					•	•		
33-3822	20-33-3822	GASKET, VALVE COVER																						•					•	•		
33-3877	20-33-3877	GASKET, OIL LEVEL SWITCH			•	•	•	•	•			•	•	•	•	•	•	•	•	•		•	•	•	•	•	•	•	•	•	•	
33-392	16-03300-00	GASKET, COPPER																														
33-408	20-33-408	O-RING, CYL SLEEVE	•	•	•	•	•	•	•	•	•	•	•	•	•	•	•	•	•	•		•		•	•	•	•	•	•	•	•	
33-4088	20-33-4088	SEAL, FRONT OIL	•	•		•		•	•	•	•	•	•	•	•	•	•	•	•	•												
33-4122	20-33-4122	GASKET, CYLINDER HEAD				•		•	•	•		•	•	•	•	•	•	•	•													
33-4209	20-33-4209	GASKET, CYLINDER HEAD																					•	•			•	•	•			
33-4210	20-33-4210	GASKET, VALVE COVER																					•	•			•	•	•			
33-487	20-33-487	GASKET, THERMOSTAT HOUSING				•		•							•	•	•	•			•											
33-544	--KK--71JV-013	O-RING PACKAGE																							•		•		•			
33-574	20-33-2205	O-RING, OIL PICKUP TUBE	•	•	•	•	•	•	•	•	•	•	•	•	•	•	•	•	•	•		•			•	•	•	•	•			
33-653	20-33-653	GASKET, PLUG				•		•							•	•	•	•			•											
33-672	20-33-672	O-RING, OIL REGULATOR	•	•	•	•	•	•	•	•	•	•	•	•	•	•	•	•	•	•		•			•	•	•	•	•		•	
33-714	20-33-714	GASKET, INJECTION PUMP												•		•																
33-726	20-33-726	O-RING, FUEL GAUGE				•	•	•	•	•		•	•	•	•	•	•	•	•	•		•	•	•	•	•	•	•	•	•	•	
33-737	20-33-737	GASKET, PUMP COVER																														
33-792	20-33-792	GASKET, HEAD													•		•															
33-796	25-10096-00	WASHER				•		•							•	•	•	•			•											
33-797	20-33-2535	SEAL, REAR CRANKSHAFT, C-201													•		•															
33-799	20-33-799	SEAL, OIL PAN													•		•															
33-820	20-33-820	O-RING, OIL SCREEN																														
33-950	20-33-2550	GASKET, 3 WAY VALVE																														
33-982	20-33-982	O-RING				•	•	•	•	•	•	•	•	•	•	•	•	•	•	•		•	•	•	•	•	•	•	•	•	•	

\*Model names are property of Thermo King Corporation







TK #	CARRIER #	DESCRIPTION	TRAILER													TRUCK																	
			Precedent® C-600	Precedent® S-600	SB-100	SB-110	SB-190	SB-200	SB-210	SB-230	SB-300	SB-310	SB-400	SB-II	SB-III	Sentry	Super-II	Spectrum® DE	Spectrum® SB	Spectrum® Super II	TD-II	TS-200	TS-300	TS-500	MD-II	MD-100	MD-200	MD-300	RD-II	Spectrum® TS	Heat King®	TriPac®	
41-8465	20-41-8465	ALTERNATOR, 120 AMP, CW				•												•															
41-866	20-41-866RB	MODULE, I/O, uP IV MT, REPAIRED												•		•	•	•	•														
42-100	20-42-100	SOLENOID, STOP	•			•		•	•	•	•	•		•			•	•	•			•	•	•	•	•	•	•	•	•	•	•	•
42-1379	20-42-1379	REGULATOR, VOLTAGE			•	•	•	•	•		•	•	•	•	•		•	•	•	•									•				•
42-367	20-42-367	ALTERNATOR, 65 AMP, CCW																															•
42-916	20-42-916	GLOW PLUG																				•	•	•	•	•	•	•	•	•	•	•	•
42-989	20-42-989	PUMP, FUEL																															•
44-1093	22-00518-01	SOCKET, PILOT LIGHT																															
44-1164	20-44-1164	SWITCH, DEFROST												•	•	•	•				•				•				•				
44-1357	10-00027-01	SWITCH, TOGGLE												•	•	•	•				•				•				•	•	•		
44-1556	20-44-1556	RESISTOR, 5 OHM												•	•	•	•																•
44-1936	10-00071-01	SWITCH, TOGGLE																						•		•		•					
44-2039	10-00265-01	REGULATOR, VOLTAGE																															
44-2089	20-44-2089	DIAL, GAUGE																															
44-2100	10-00072-02	SWITCH, TOGGLE																															•
44-2169	30-00171-22	DIODE ASSEMBLY, ALTERNATOR, NEG																															
44-2193	30-00171-10	CABLE ASSY, ALTERNATOR																															
44-2219	30-50001-01	BRUSH KIT SET												•		•																	
44-2260	12-00136-00	GAUGE, OIL PRESSURE																															
44-2286	30-00306-14	FAN, ALTERNATOR, CCW ROTATION												•	•	•	•				•				•		•		•				
44-2602	20-44-2602	SOCKET, 12 CONTACT																															
44-2756	22-01030-17	DIODE ASSY, RUN/SPEED SOLENOID	•		•	•	•	•	•	•	•	•	•	•	•	•	•	•	•	•	•	•	•	•	•	•	•	•	•	•	•	•	•
44-2814	20-44-2814	GAUGE, WATER TEMP																															
44-2823	10-01095-00	SOLENOID, LINEAR, PULL		•	•	•	•	•	•	•	•	•	•	•	•	•	•	•	•	•	•	•	•	•	•	•	•	•	•	•	•	•	•
44-2847	34-50009-01	PLUNGER ASSY												•	•			•				•	•			•	•	•					
44-2853	10-00279-00	CONTACTOR																															
44-2907	20-44-5305	SWITCH, PRESSURE												•	•										•				•				
44-2911	20-44-2911	SOLENOID, STARTER												•		•																	
44-2922	20-44-2922	GLOW PLUG												•		•																	
44-3018	20-44-3018	SWITCH, WATER SAFETY												•	•	•	•				•				•		•		•	•	•	•	•
44-3155	20-44-3155	SWITCH, DEFROST												•		•																	
44-3183	20-44-3183	SWITCH, GLOW START												•	•	•																	
44-3184	10-01153-00	SOCKET, RELAY												•	•	•									•		•		•				•
44-3186	20-44-3186	RELAY, DEFROST												•	•	•	•				•				•		•		•				•
44-3258	20-44-9302	AMMETER, -50 0 +50												•	•	•	•				•				•				•				
44-3280	10-01120-00	RECTIFIER												•																			
44-3325	20-44-3325	ALTERNATOR, 37 AMP																															
44-3473	20-44-3473	HOURLY METER																															
44-3474	12-01039-08	SWITCH, DIFF PRESSURE												•	•	•									•		•		•				
44-3555	12-01039-08	SWITCH, DIFF PRESSURE												•	•	•									•		•		•				

\*Model names are property of Thermo King Corporation





TK #	CARRIER #	DESCRIPTION	TRAILER															TRUCK														
			Precedent® C-600	Precedent® S-600	SB-100	SB-110	SB-190	SB-200	SB-210	SB-230	SB-300	SB-310	SB-400	SB-II	SB-III	Sentry	Super-II	Spectrum® DE	Spectrum® SB	Spectrum® Super II	TD-II	TS-200	TS-300	TS-500	MD-II	MD-100	MD-200	MD-300	RD-II	Spectrum® TS	Heat King®	TriPac®
44-8883	20-44-8883	SENSOR, OIL PRESSURE				•		•	•		•			•		•	•	•	•			•	•	•	•				•	•		
44-9041	20-44-9041	HARNESS, ALTERNATOR											•	•		•		•														
44-9111	10-00286-03	RELAY											•	•	•	•					•			•					•		•	•
44-9143	20-42-1379	REGULATOR, VOLTAGE			•	•	•	•	•		•	•	•	•		•	•	•	•										•			•
44-9181	20-44-9181	SOLENOID, LINEAR	•		•	•	•	•	•	•	•	•	•	•	•	•	•	•	•	•	•	•	•	•	•	•	•	•	•	•	•	•
44-9259	20-44-9259	HOURLY METER												•		•					•							•			•	
44-9298	20-44-9298	SENSOR, RPM W/O BOOT	•		•	•	•	•	•	•	•	•	•	•	•	•	•	•	•	•	•	•	•	•	•	•	•	•	•	•	•	•
44-9302	20-44-9302	AMMETER, -50 0 +50											•	•	•	•					•			•				•				
44-9336	20-44-9336	HARNESS, ALTERNATOR													•	•		•										•				
44-9408	20-44-9408	SWITCH, HPCO, W/CONNECTOR												•		•																
44-9468	20-44-9468RB	BOARD, RELAY, REPAIRED												•		•																
44-9571	30-50340-00	ALTERNATOR, 90 AMP																														
44-9588	20-44-9588	THERMISTOR, BOLT												•																		
44-984	22-00049-00	LAMP, INCANDESCENT																														
44-9865	20-44-9865RB	BOARD, CYCLE SENTRY, REPAIRED																			•			•		•		•			•	
45-1083	20-45-1083RB	THERMOSTAT, 3K, REPAIRED																														
45-1251	20-45-1251	STARTER																														
45-1263	20-45-1993	STARTER, 2.2DI ENGINE			•		•						•	•	•	•			•													
45-1285	20-45-1285	STARTER					•						•	•	•				•													
45-1312	20-45-1718	STARTER																			•			•				•				
45-1473	20-45-1473RB	BOARD, CYCLE SENTRY, REPAIRED													•		•															
45-1557	20-45-1557RB	CONTROLLER, REPAIRED																														
45-1558	20-45-1558RB	CONTROLLER, REPAIRED																														
45-1579	20-45-1579RB	THERMOSTAT, TG5, REPAIRED																							•			•			•	
45-1597	20-45-1597RB	CONTROLLER, MICRO P IV, W/LOGGER																		•												
45-1609	20-45-1609RB	Multi-Temp uP-IV W/O LOGGER																														
45-1610	20-45-1610RB	Multi-Temp uP-IV W/LOGGER																														
45-1613	20-45-1613RB	CONTROLLER, TGVI, REPAIRED			•									•		•																
45-1625	20-45-1625RB	CONTROLLER, TGVI, REPAIRED													•		•															
45-1671	20-45-1993	STARTER, 2.2DI ENGINE			•		•						•	•	•	•			•													
45-1688	20-45-1688	STARTER, 486, TIER I				•		•	•	•	•	•	•	•	•	•	•	•	•	•	•	•	•	•	•	•	•	•	•	•	•	•
45-1708	20-45-1708RB	CONTROLLER, TGVI, REPAIRED																														
45-1718	20-45-1718	STARTER																			•			•				•				
45-1768	20-45-1768RB	CONTROLLER, TG-VIa, REPAIRED													•																	
45-1780	20-45-1780RB	CONTROLLER, CAB, REPAIRED																														
45-1780	20-45-1780RBSV	CONTROLLER, CAB (INC. FACEPLATE)																														
45-1789	20-45-1789RB	CONTROLLER, TGV/V+, W/O LOGGER													•		•															
45-1790	20-45-1790RB	CONTROLLER, TGV/V+, W/LOGGER													•		•															
45-1866	20-45-1866RB	REMOTE CONTROL, REPAIRED																														
45-1930	20-45-1930RB	CONTROLLER, MP6, REPAIRED													•																	

\*Model names are property of Thermo King Corporation



TK #	CARRIER #	DESCRIPTION	TRAILER																TRUCK																
			Precedent® C-600	Precedent® S-600	SB-100	SB-110	SB-190	SB-200	SB-210	SB-230	SB-300	SB-310	SB-400	SB-II	SB-III	Sentry	Super-II	Spectrum® DE	Spectrum® SB	Spectrum® Super II	TD-II	TS-200	TS-300	TS-500	MD-II	MD-100	MD-200	MD-300	RD-II	Spectrum® TS	Heat King®	TriPac®			
55-1983	40-00086-04	CAP, FLARE, SERVICE VALVE, 1/4"	•	•	•	•	•	•	•	•	•	•	•	•	•	•	•	•	•	•	•	•	•	•	•	•	•	•	•	•	•	•	•		
55-2042	30-00171-13	NUT, PULLEY, ALTERNATOR, 5/8-18												•	•	•	•				•											•			
55-2069	44-00045-06	CLAMP, HOSE (WORM)												•		•	•				•	•	•	•	•	•	•	•	•	•	•	•	•		
55-2208	20-55-2208	WASHER, BOLT			•		•							•	•	•	•				•														
55-2407	20-55-2407	PLUG, OIL												•		•																			
55-2459	20-55-2459	WASHER, NOZZLE												•		•																			
55-2669	40-00086-06	CAP, FLARE, KING VALVE, 3/8"																																	
55-2762	34-50009-00	EYE BOLT	•		•	•	•	•	•	•	•	•	•	•	•	•	•	•	•	•	•	•	•	•	•	•	•	•	•	•	•	•	•	•	
55-2796	66-U--1--3882	WIRE TIE, SELF-LOCKING, 7"			•	•	•	•	•	•	•	•	•	•	•	•	•	•	•	•	•	•	•	•	•	•	•	•	•	•	•	•	•	•	
55-308	40-00102-03	ELBOW (MFL X MPT)			•	•	•	•	•	•	•	•	•	•	•	•	•	•	•	•	•	•		•									•		
55-3345	20-55-3345	WASHER, HEATSHIELD												•		•																			
55-3369	20-55-3369	FASTENER, WING			•	•	•	•	•	•	•	•	•					•	•																
55-3534	20-55-3534	WASHER, CORRUGATED												•		•																			
55-3631	20-55-3631	SCREW														•																			
55-381	20-55-381	O-RING, COPPER	•	•	•	•	•	•	•	•	•	•	•	•	•	•	•	•	•	•	•	•	•	•	•	•	•	•	•	•	•	•	•	•	
55-386	20-55-386	O-RING, COPPER												•	•								•												
55-4306	20-55-4306	O-RING, COPPER												•	•																				
55-4316	20-55-4316	SCREW, 3/8-16 X 3"												•	•	•	•				•														
55-455	20-55-455	KEY																								•	•	•	•						
55-457	20-55-457	KEY			•	•	•	•	•	•	•	•	•	•	•	•	•	•	•	•	•	•	•	•	•	•	•	•	•	•	•	•	•	•	
55-466	40-00102-03	ELBOW (MFL X MPT)			•	•	•	•	•	•	•	•	•	•	•	•	•	•	•	•	•	•	•	•	•	•	•	•	•	•	•	•	•	•	
55-4979	44-00045-04	CLAMP, HOSE (WORM)			•	•	•	•	•	•	•	•	•	•	•	•	•	•	•	•	•	•	•	•	•	•	•	•	•	•	•	•	•	•	•
55-5094	40-00117-01	COCK, DRAIN			•		•							•	•	•	•				•			•	•	•	•	•	•	•	•	•	•	•	
55-5524	25-38666-12	SCREW, HOLLOW			•		•							•	•	•	•				•														
55-5617	40-00697-00	VENT, FUEL		•	•	•	•	•	•	•	•	•	•	•	•	•	•	•	•	•	•	•	•	•	•	•	•	•	•	•	•	•	•	•	
55-5672	--DD--19CA-061	CAP, 1/4" SHRADER VALVE	•	•	•	•	•	•	•	•	•	•	•	•	•	•	•	•	•	•	•	•	•	•	•	•	•	•	•	•	•	•	•	•	
55-644	40-00102-12	ELBOW (MFL X MPT)																																	
55-664	20-55-664	LOCK NUTS												•	•	•																			
55-6751	20-55-6751	PLUG, OIL DRAIN	•	•	•	•	•	•	•	•	•	•	•	•	•	•	•	•	•	•	•	•	•	•	•	•	•	•	•	•	•	•	•	•	
55-6752	20-55-6752	PLUG, OIL PUMP	•	•	•	•	•	•	•	•	•	•	•	•	•	•	•	•	•	•	•	•	•	•	•	•	•	•	•	•	•	•	•	•	
55-895	20-55-895	WASHER, SEAL 5/16	•	•	•	•	•	•	•	•	•	•	•	•	•	•	•	•	•	•	•	•	•	•	•	•	•	•	•	•	•	•	•	•	
55-896	20-55-896	WASHER, SEAL (3/8)	•	•	•	•	•	•	•	•	•	•	•	•	•	•	•	•	•	•	•	•	•	•	•	•	•	•	•	•	•	•	•	•	
55-9024	20-55-9024	KEY, COMPRESSOR SHAFT	•	•		•	•	•	•	•	•	•	•	•	•	•	•	•	•	•	•	•	•	•	•	•	•	•	•	•	•	•	•	•	
55-9031	20-55-9031	SCREW, M12 X 1.75 X 70MM			•	•	•	•	•	•	•	•	•	•	•	•	•	•	•	•	•	•	•	•	•	•	•	•	•	•	•	•	•	•	
55-9032	20-55-9032	KEY, COMPRESSOR SHAFT			•	•	•	•	•	•	•	•	•	•	•	•	•	•	•	•	•	•	•	•	•	•	•	•	•	•	•	•	•	•	•
55-9092	20-55-9092	SCREW, M12 X 1.75 X 80MM			•	•	•	•	•	•	•	•	•	•	•	•	•	•	•	•	•	•	•	•	•	•	•	•	•	•	•	•	•	•	•
55-9403	20-55-9403	FITTING, 90, 3/8" FEMALE-0 #6																																	•
55-9404	20-55-9404	FITTING, 90, 1/2" FEMALE-0 #8																																	•
55-9405	20-55-9405	FITTING, 90, 5/8" FEMALE-0 #10																																	•
55-9406	20-55-9406	FITTING, 90, 3/4" FEMALE-0 #12																																	•

\*Model names are property of Thermo King Corporation















TK #	CARRIER #	DESCRIPTION	TRAILER													TRUCK																
			Precedent® C-600	Precedent® S-600	SB-100	SB-110	SB-190	SB-200	SB-210	SB-230	SB-300	SB-310	SB-400	SB-II	SB-III	Sentry	Super-II	Spectrum® DE	Spectrum® SB	Spectrum® Super II	TD-II	TS-200	TS-300	TS-500	MD-II	MD-100	MD-200	MD-300	RD-II	Spectrum® TS	Heat King®	TriPac®
78-495	20-78-495	BELT, 65" OD																														
78-500	20-78-500	BELT, 2-3VX POWER BAND																														
78-513	20-78-513	BELT, 30.5" OD																														
78-521	20-78-521	BELT																														
78-556	20-78-556	BELT, FAN, X426 COMPRESSOR																														
78-558	20-78-558	FAN, EVAPORATOR																														
78-560	20-78-666	BELT, FAN, X430 COMPRESSOR																														
78-585	20-78-585	BELT, BX COGGED, 44.90"																														
78-591	20-78-591	BELT, 60" OD																														
78-592	20-78-592	BELT, 53.3" OD																														
78-603	20-78-603	BELT, FAN																														
78-604	20-78-604	BELT, ENGINE TO IDLER																														
78-617	20-78-617	BELT, SET OF 2																														
78-626	20-78-626	BELT, BX CUT																														
78-628	20-78-628	BELT, BX CUT, SET OF 2																														
78-629	20-78-629	BELT, ENGINE TO IDLER																														
78-632	20-78-632	BELT, SET																														
78-656	20-78-656	BELT, WRAPPED																														
78-666	20-78-666	BELT, FAN, X430 COMPRESSOR																														
78-667	20-78-667	BELT, 47.7" OD																														
78-668	20-78-668	BELT, A CUT																														
78-669	20-78-669	BELT, B CUT																														
78-679	20-78-679	BELT, WATER PUMP																														
78-684	20-78-684	BELT, EVAPORATOR FAN																														
78-689	20-78-689	BELT, BX CUT																														
78-697	20-78-697	BELT, B SECTION X 112																														
78-698	20-78-698	BELT, EVAPORATOR FAN TO COMPRESSOR																														
78-700	20-78-700	BELT, ALTERNATOR TO EVAPORATOR FAN																														
78-721	20-78-721	BELT, RAW EDGE, COGGED, 155" OD																														
78-723	20-78-723	BELT, COGGED, SET OF 2																														
78-731	20-78-731	BELT, 4L CUT																														
78-739	20-78-757	BELT, ENGINE TO IDLER																														
78-751	20-78-751	BELT, ALTERNATOR																														
78-757	20-78-757	BELT, ENGINE TO IDLER																														
78-765	20-78-765	BELT, 2-3V POWER BAND																														
78-766	20-78-766	BELT, ALTERNATOR TO EVAPORATOR FAN																														
78-767	20-78-767	BELT, WATER PUMP																														
78-773	20-78-773	BELT, B MOLDED																														
78-784	20-78-784	BELT, COMPRESSOR DRIVE, 2.2 DI																														
78-785	20-78-785	BELT, COMPRESSOR DRIVE, SET OF 2																														

\*Model names are property of Thermo King Corporation













# Exceptional Performance Backed by Our Comprehensive Dealer Service and Support



## Download Our Free Dealer Locator App



SCAN THIS CODE



or go to either the Apple® App Store or Google Play™  
and search for Carrier Transicold.

**North America**  
Carrier Transicold  
700 Olympic Drive  
Athens, GA 30601 USA

**Central America and Mexico**  
Carrier Transicold  
Ejercito Nacional 253-A Piso 5  
Colonia Anahuac  
11320 Mexico D.F.

Specifications are subject to change without notice.

Thermo King, Apple and Google are registered trademarks and the property of their respective owners, Thermo King Corporation, Apple Inc. and Google Inc. 20 Series Performance Parts are sold by Carrier Transicold. Thermo King Corporation, Apple Inc. and Google Inc. have no affiliation or involvement with 20 Series Performance Parts. ©2020 Carrier. Printed in USA 0620. Form 62-12018 Rev C



[www.carrier.com/performance-parts](http://www.carrier.com/performance-parts)