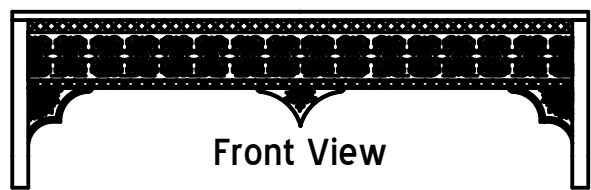
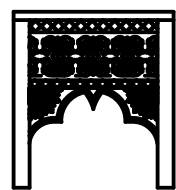


Top View

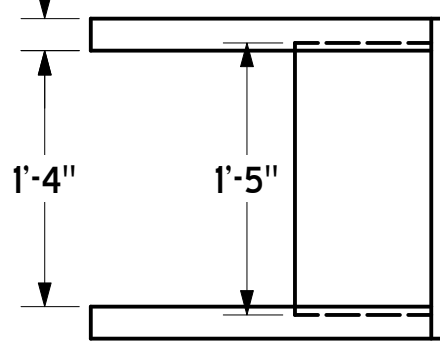


Front View

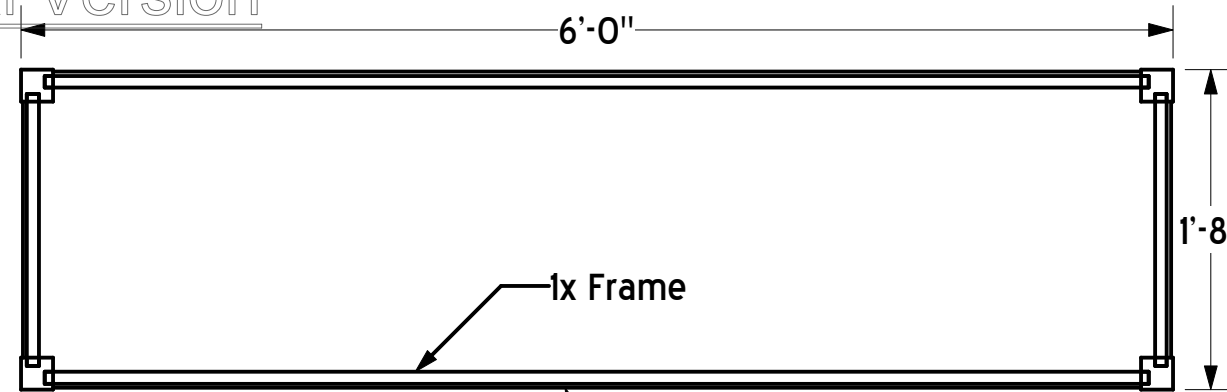


Side View

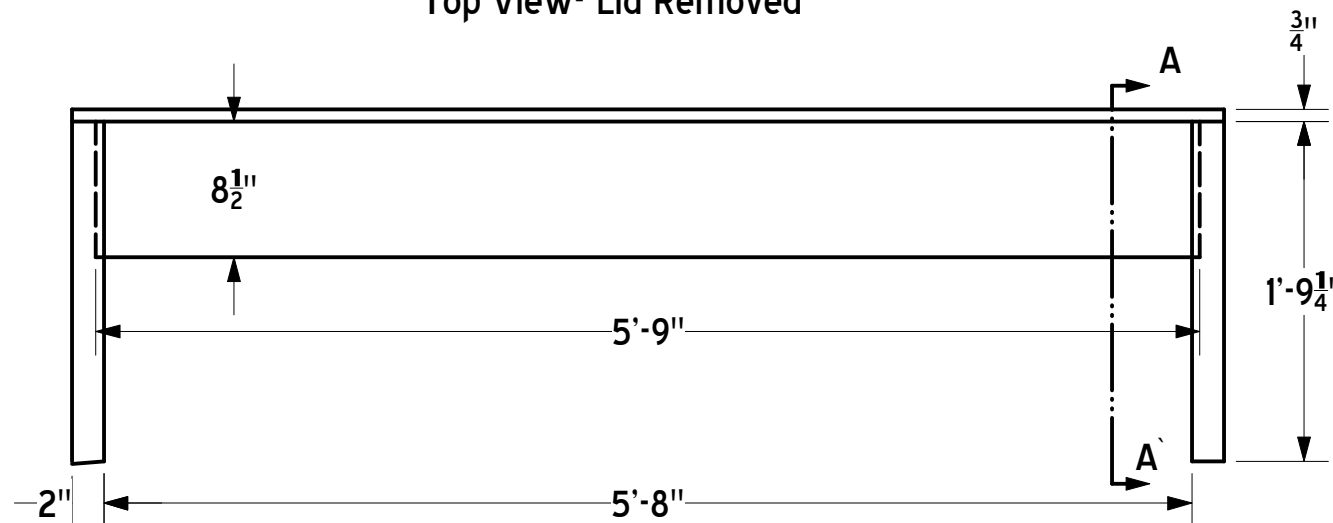
1 Finished Bench
Scale: 1/2"=1'-0"



Side View



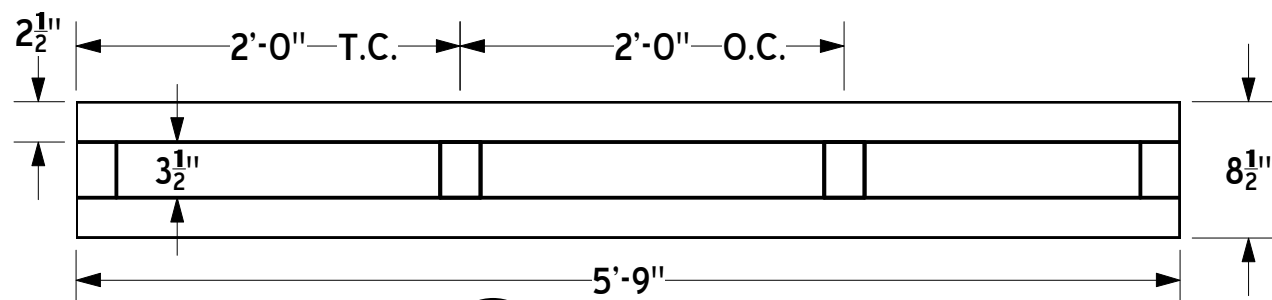
Top View- Lid Removed



Front View

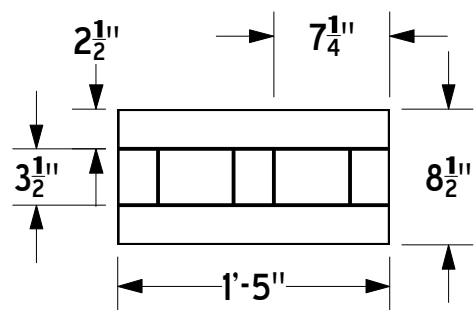
2 Boat Bench Orthographic
Scale: 1"=1'-0"

Build 2: From 1x3, 2x, Luan, and 3/4" Ply.
Assemble aprons in dados with pocket hole screws.
Glue All. Lid is 3/4" Ply, assemble with loose pin hinges.



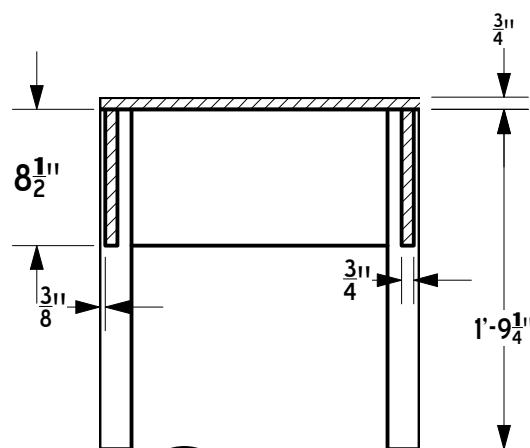
4 Front/ Back Apron Frame
Scale: 1"=1'-0"

Build 2 From 1x3
Predrill pocket holes before assembly



5 Side Apron
Scale: 1"=1'-0"

Build 2 From 1x3
Predrill pocket holes before assembly



3 Section A-A
Scale: 1"=1'-0"

Production Title		Arabian Nights	
Drawing Title		Boat Bench Design 2	
Designer	Jay I.	Director	Alice Berry
Drawn By	A. Mayer	Scale	As Noted
Client	University of Memphis	Drawing No.	1
Date	3/13/12		of
CAD File Name			?