

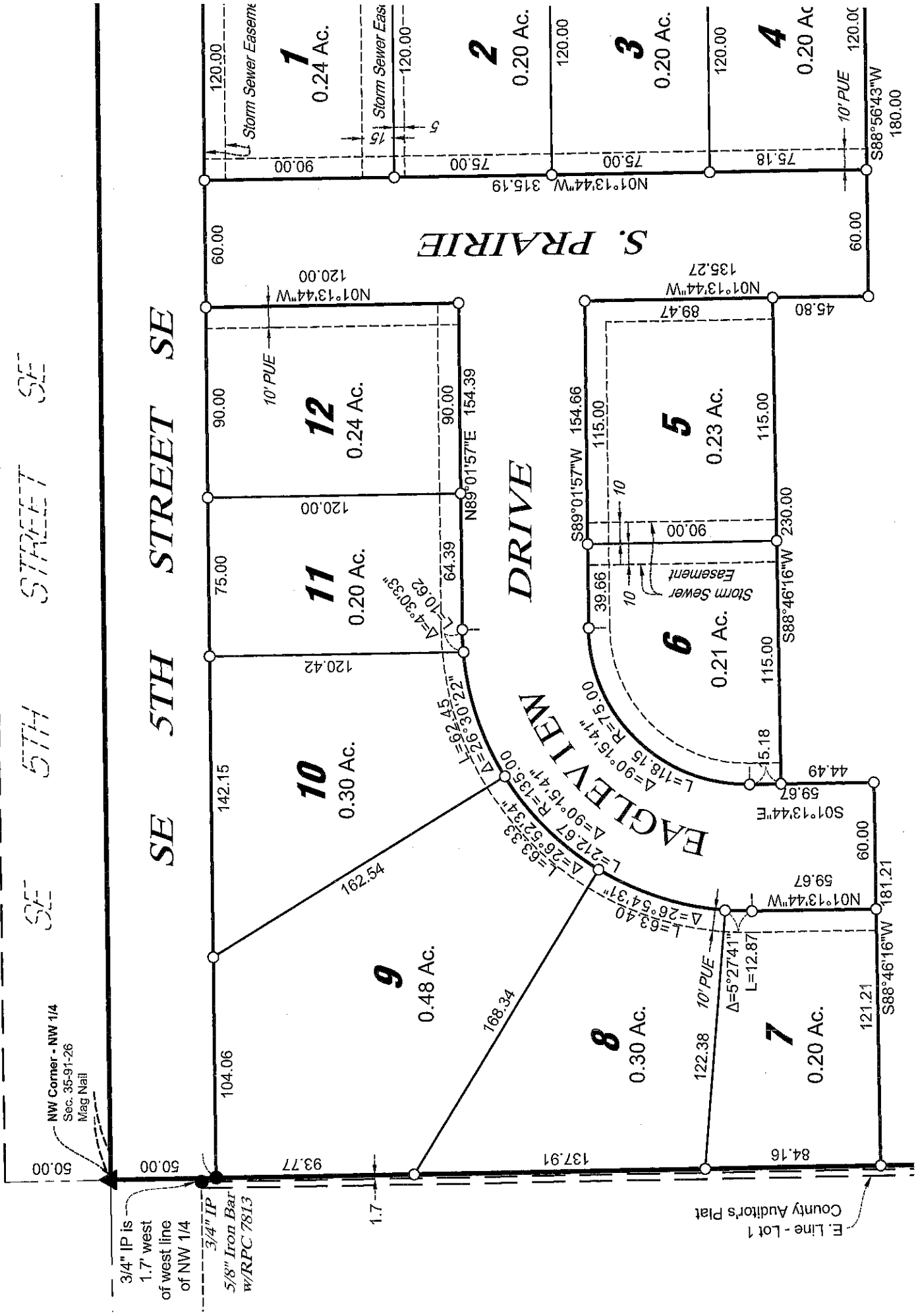
FINAL PLAT ROTARY ADDITION -

SE 5TH STREET SE

SE 5TH STREET SE

DRIVE

S. PRAIRIE



NW Corner - NW 1/4
Sec. 35-91-26
Mag Nail

3/4" IP is
1.7' west
of west line
of NW 1/4

3/4" IP
5/8" Iron Bar
w/RPC 7813

E. Line - Lot 1
County Auditor's Plat