

School Team Championships & Individual Open on April 22 at Greenfield Hall

Link to details and online registration at www.rovingchessnuts.com

Roving ChessNuts CHESS Teasers



NEWS, RESULTS, UPCOMING EVENTS, PHOTOS AND INTERESTING STUFF
MAINLY ABOUT SCHOLASTIC CHESS IN EDMONTON & CHESSNUTS ACTIVITIES

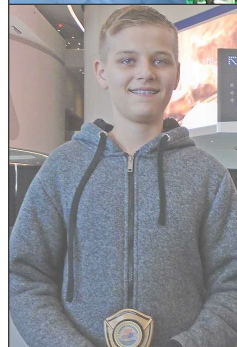


Volume 10, Issue 19 • March 26, 2018

More photos: Chess Faceoff at Rogers Place Over 100 players enjoy chess and then Oil Kings game!



*Thanks to
all who
participated!*



A few spaces left as of Monday ...

Attend Roving ChessNuts Spring Break Chess Camps

Wednesday, Thursday and Friday, March 28, 29, 30 8:30 to 5 p.m.

at the Roving ChessNuts 12019 76 Street, Edmonton

Full Day (8:30 to 5 p.m.) **Half Day** (8:30 to 12:30 or 1 to 5 p.m.)

(Limited enrollment of 12 students, priority to full-day students

(Full-Day players bring a bag lunch; a.m./p.m. healthy snacks provided morning and afternoon)

Full Day: \$50 plus GST Three Full Days \$130 plus GST

Half-Day: \$30 plus GST Three Half Days: \$80 plus GST

10% discount if enrolled in ChessNuts class or school program

Payment can be made by cheque, credit card, debit card or cash and must be arranged at time of enrollment. Refund, minus \$15 administrative fee can be requested for cancellations received one week prior to start of camp. In case of illness or other reasonable absence, credit can be extended to other camp dates or other Roving ChessNuts programs and classes.

E-mail rovingchessnuts@shaw.ca or call **780-474-2318** to register for camps or for further details

Lessons • Chess Puzzle Competition • Prizes • Games Rated by national Chess'n Math Association • Outdoor (weather permitting) Games Coaching during practice games and chess exercises • Fun Times • Make New Chess Friends

Also offering evaluation before and discount
on half day camps for new students, call 780-474-2318



12015/19 - 76 Street NW
Edmonton, AB T5B 2C9
780-474-2318

Open to all levels of students who have been involved in basic chess lessons, know legal moves, checkmating and some openings. Students unknown to Roving ChessNuts programs must make an appointment for a free evaluation prior to being accepted.

Family Discounts 15% for second student; 30% third



Have Fun! Learn & Play Chess!

Chess Activities

The following scholastic chess competitions and activities in Edmonton and area are subject to change. Keep updated: regularly check the website: www.rovingchessnuts.com Make sure you are on ChessNuts' e-mail contact list so you get newsletters, updates on school programs and other information.

To subscribe, e-mail: rovingchessnuts@shaw.ca or call: 780-474-2318.

Most Saturdays, 9 to 10 a.m.: Free evaluations of chess skills at the Roving ChessNuts. Necessary for proper placement in classes, coaching sessions and competitions. Appointments necessary ... phone or e-mail. If Saturdays do not work, other arrangements may be made. Get your child started the right way!

Monday, Tuesday, Wednesday evening classes (6:30) at Greenfield Hall, 3803 114 Street; Saturday mornings at Roving ChessNuts, 12019 76 Street: Various levels of classes which recently started their spring sessions or will do so after the spring school break. You must apply to join these classes and some are filled or nearly filled. Call 780-474-2318 or e-mail.

Easter Monday, April 2, 1 p.m., at Roving ChessNuts: Small **Training Tournament** for chess students Grade 6 and under with no or one tournament experience. Must know legal moves and how to checkmate. Allows practice with clock play and some coaching provided between games. Open to first 12 students to apply by e-mail: rovingchessnuts@shaw.ca. Medals to be awarded and two draw prizes. \$10 entry.

Sunday, April 22, sign-in 12:30 p.m. at Greenfield Hall: School Team Championship at Greenfield Hall. Round-robin format with trophies and medals as prizes. All players eligible for draw prizes. Sign-in by 12:45 p.m. Online registration and details begins evening of March 27, follow link on Roving ChessNuts website. Each school must have four or five students per team. Individuals can enter as well, although their numbers may be limited. Updates www.rovingchessnuts.com.

Sunday, May 13, at Greenfield Hall: Popular **Mother's Day Tournament** where each player gets a flower to take home to Mom and draw prizes are usually are ones to share with Mom! Watch for details and online registration.

Sunday, June 3, at Greenfield Hall: School Grade Championships: Play only against players in your own school grade!

Sunday, June 24, at Greenfield Hall: Hurrah! End of School Year Tournament with Hot Dog Party!

Watch for details, online registration and updates for June tournaments on website.

Reserve 2018 Summer Dates:

July 1: **Chess Promotion**

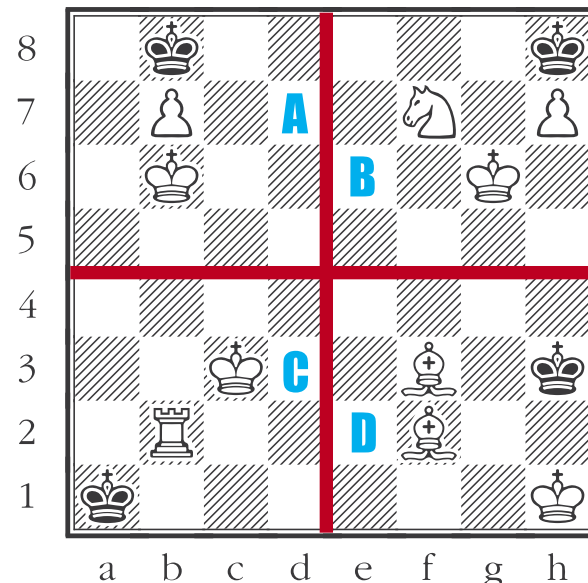
July 3 to 6: **Chess Camps at Roving ChessNuts**

August 27 to 31: **Chess, Fitness and Fun Camps at Greenfield Hall**

Check www.rovingchessnuts.com & future newsletters for updates, new events and online registration for events, plus details on school programs and classes

Four Puzzle Chess Board ...

Black to move ... answer question below



A lot of beginning players of any age initially struggle with the concepts of Checkmate and Stalemate. Just remember if Black only has the King to move and it cannot legally move that is a Stalemate worth 1/2 point each. If Black only has the King and it is in check and cannot move out of check, that is a Checkmate worth 1 point! Write the **Blue Letter(s)** to describe above positions:

Surely a Checkmate: _____

Must be a Stalemate: _____

Attention: Parents

At various times during the busy school year, the Roving ChessNuts are dealing with between 400 and 600 students.

When you e-mail, text, phone or otherwise contact us, please be sure to identify your child by full name, name of school program or class attended or name of tournament or event you are inquiring about.

Because we are often out of the office at classes and programs, e-mail is usually the best way as we answer and check e-mails several times each day and evening.

Thanks for your co-operation!

rovingchessnuts@shaw.ca

Correction on Chess Faceoff Results

Discovered during the rating report process after the March 11 Faceoff event at Rogers Place, we discovered that in **Section B** results in the March 15 Chess Teasers, we listed a tie for second place!

Our apologies to **Alex Wang** who earned two points and should have been listed as sole 2nd place.

The Chess Faceoff rating report is expected to be posted this week by Chess'n Math Association. A link or report itself will be on the RC website.



Clocks make for fairer games!

DGT1001 Chess Clock

\$41.95^{+GST} Used at Edmonton tournaments Scholastic Tournaments • Practice with a clock - time your checkmating abilities and speed up play at home with slower-thinking opponents!

Roving ChessNuts

12015 76 Street, Edmonton • 780-474-2318

rovingchessnuts@shaw.ca

Orders can be placed by e-mail or phone; delivered to students in school programs or classes