


Everyday Candleholders & Potpourri Burners

Item Number	Description	Size (Inches)	Bisque
JM-661	 <p>Plain Potpourri Burner</p>	5 Diameter	9.00
Cin-1028	 <p>"Bubba" Tiki Candleholder</p>	6.75 Tall	8.00
CH-12	Plain Oil/ Wax Tart Burner		8.00

LL-352



3.5 Tall

10.00

Daffodil Candleholder

A- 1813

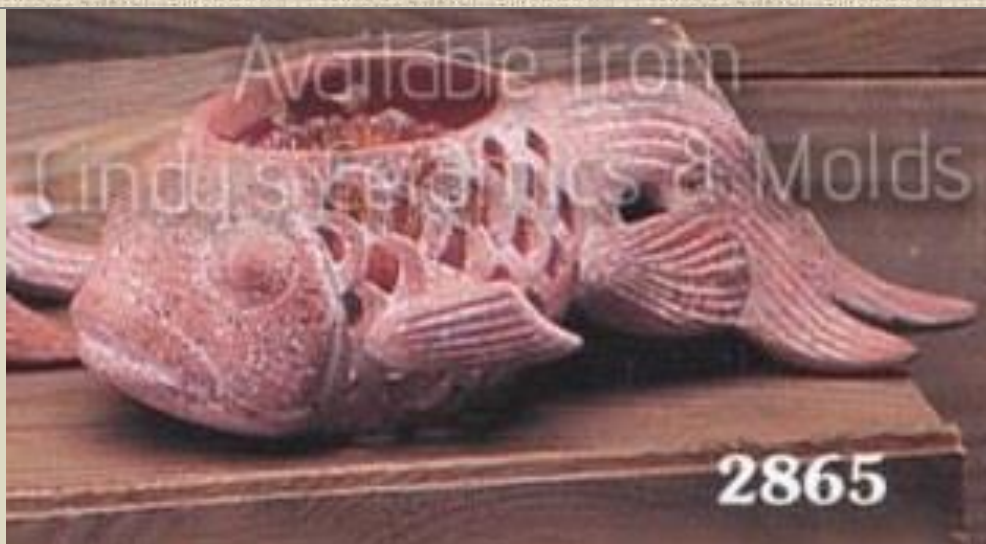


5
Diameter

9.00

Shell Bowl/ Candleholder

H- 2853

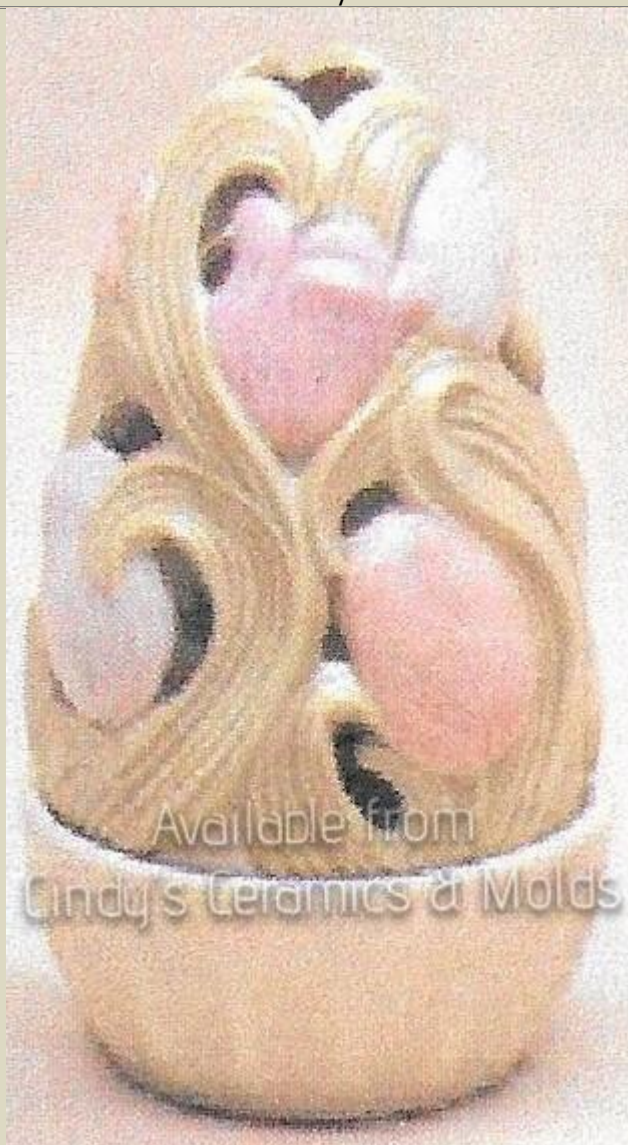


3.75
High by
10.5
Long

18.00

Small Koi Planter/ Candleholder

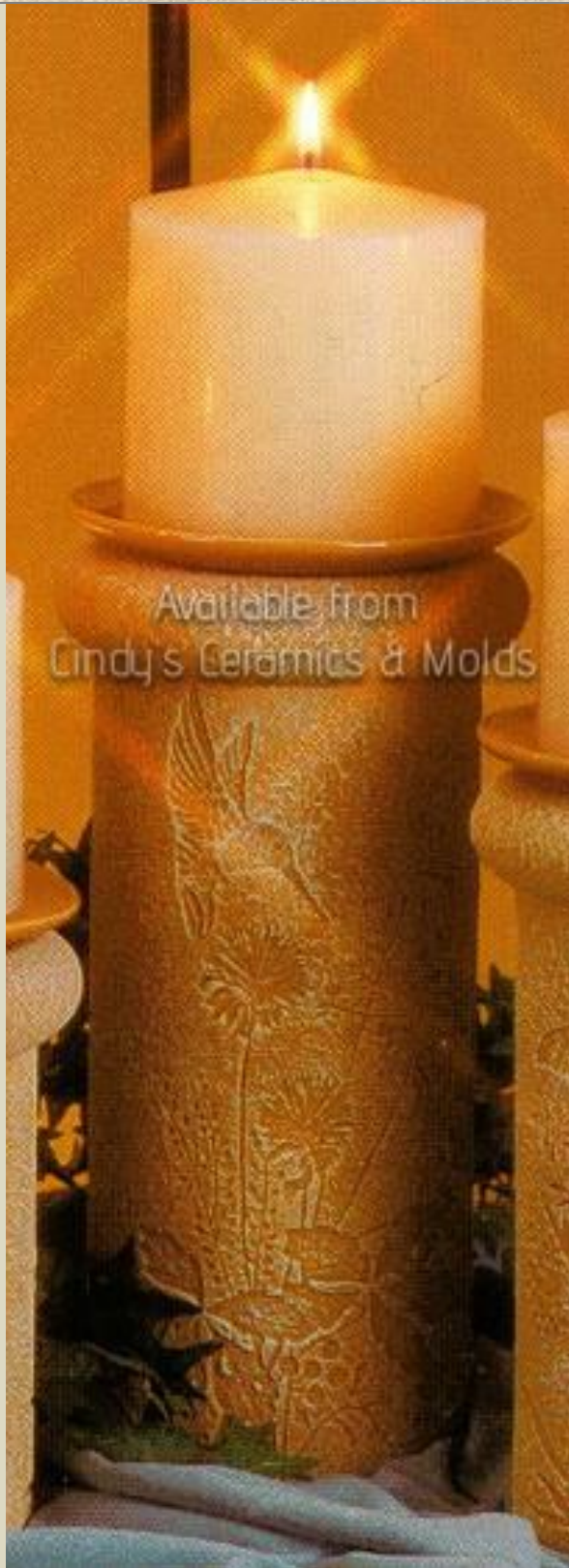
H-
2938/40



7.75 High 16.00

Tulip Light

D-1743	 <p>x= Not Available</p> <p>Votive Candle Cup for Impressions Series (shown on center left inside Woodland Impressions Candleholders)</p>	3 Diameter	4.70
D-1744	Oil Lamp Holder for Impressions Series (actual oil lamp insert sold separately; shown on center right inside Woodland Impressions Candleholders)	3 Diameter	4.70
D-1760	Woodland Impressions Small Candleholder/ Lamp (choose Votive Holder, Oil Lamp Holder, Candle Dish, or Tea Light Holder, sold separately)	5 High	13.00
D-1761	Woodland Impressions Medium Candleholder/ Lamp (choose Votive Holder, Oil Lamp Holder, Candle Dish, or Tea Light Holder, sold separately)	8 High	17.30
D-1762	Woodland Impressions Large Candleholder/ Lamp (choose Votive Holder, Oil Lamp Holder, Candle Dish, or Tea Light Holder, sold separately)	11 High	21.60



D-1834

11 High

21.60

Meadow Impressions Large Candleholder/ Lamp (choose Votive Holder, Oil Lamp Holder, Candle Dish, or Tea Light Holder, sold separately)

D-1837

Candle Dish for Impressions Series (shown above on Meadow Impressions Candleholder)

5.5
Diameter

6.10

D-1841

Tea Light Holders for Impressions Series (shown below on Canoe Candleholder)

3 Wide

7.20

D-1861	 <p>Jar Candle Base</p>	6.25 Wide	7.20
D-1874	 <p>Large "Coastal Impressions" Candleholder (choose Lighthouse Candlecup, Votive Holder, Oil Lamp Holder, Candle Dish, or Tea Light Holder, sold separately)</p>	14 High	21.60
D-1876	<p>Small "Coastal Impressions" Candleholder (choose Votive Holder, Oil Lamp Holder, Candle Dish, or Tea Light Holder, sold separately)</p>	10 High	13.00
D-1877	<p>Lighthouse Candlecup for D-1874, 1876 (shown above top right)</p>	6.25 High	5.80

D-
1881/2

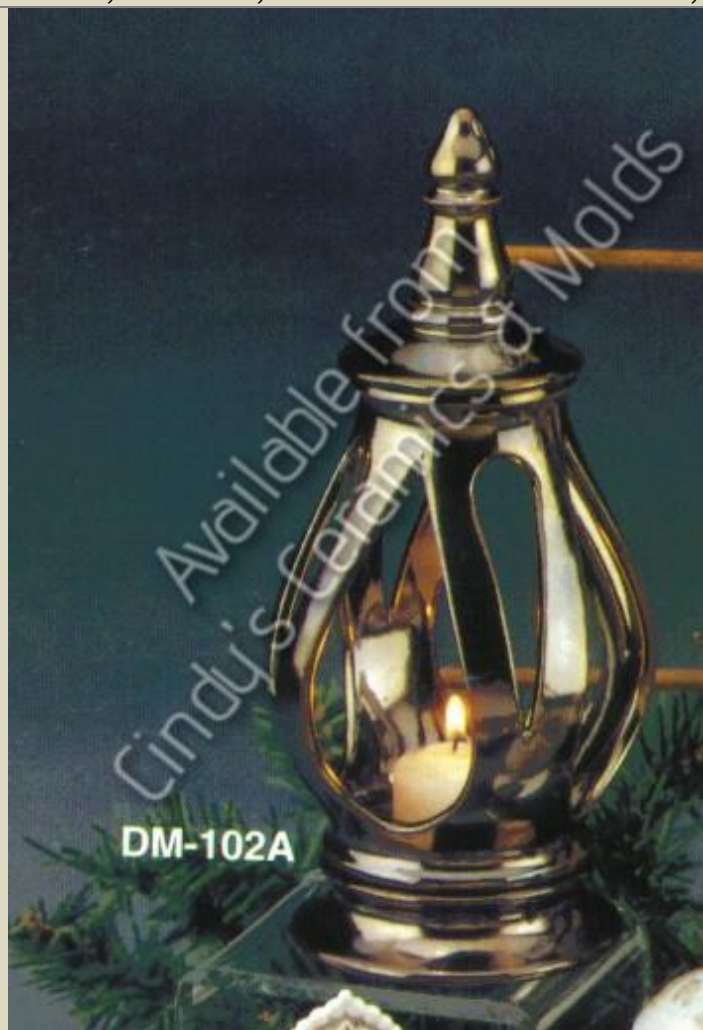


Canoe: 18
Long;
Stand 5.5
Wide

21.70

Canoe Candleholder & Stand (shown bottom center; uses either three tea light holders, D-1841, or two tea light holders and one votive, D-1743, as well as a canoe stand, D- 1882)

DM-102A



9.75 High

14.00

Patio Lantern

DM-268	<div data-bbox="394 86 1081 848" data-label="Image"> </div> <div data-bbox="574 888 902 926" data-label="Caption"> <p>Owl Bank/ Lantern</p> </div>	6 High	10.50
S-3138	<div data-bbox="516 930 961 1824" data-label="Image"> </div> <div data-bbox="248 1866 1230 1980" data-label="Caption"> <p>Candle Cup Base (For Tapir Candles, Shown inside village hurricane lantern [not available]; Can be added to many pieces to convert them into candleholders)</p> </div>		2.20

<p>S-3569</p>	 <p>Candle Base (for Jar Candles)</p>	<p>7.5 Diameter</p>	<p>8.90</p>
<p>A-426</p>	  <p>Candleholder Tray (Can be used alone, or with many different small figurines)</p>	<p>2.125 High by 6.625 Long</p>	<p>6.00</p>

TB-840	<div data-bbox="219 94 1263 304"></div> <div data-bbox="542 359 935 396">Seashell Candleholders</div>	3.5 Diameter	12.00
MOM-135	<div data-bbox="233 401 1243 1680"></div> <div data-bbox="219 1717 1260 1801">Plain Short Candleholder (Can be cutout with various designs for a slight upcharge; Shown with optional attachments)</div>	7 High	9.00

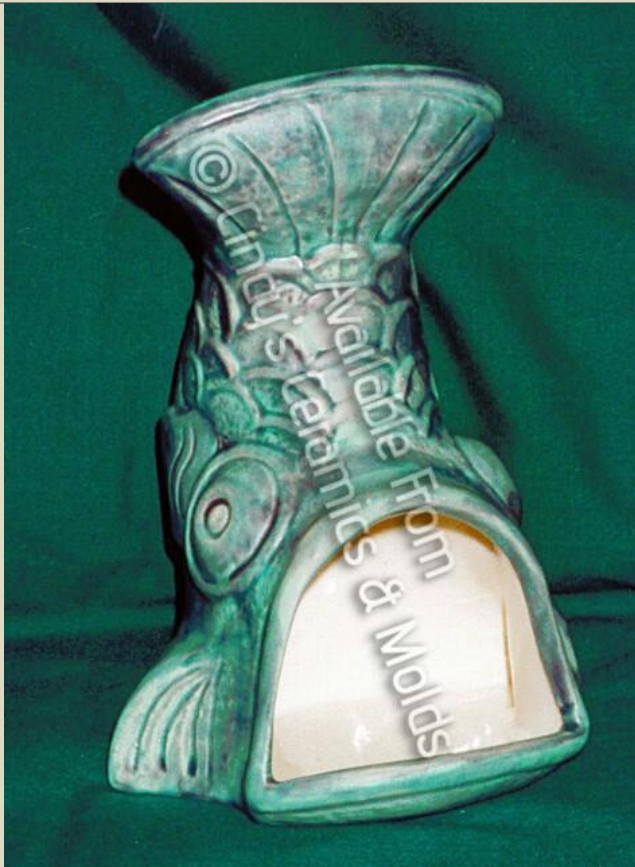
M-1415



Leaves & Acorns Candleholder

12.50

C-4044

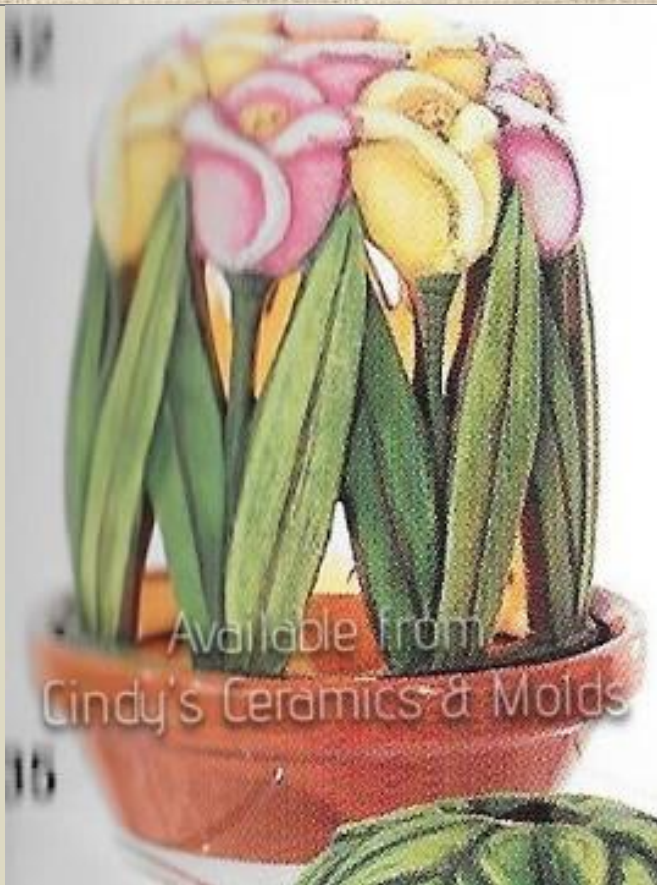


Small Fish Chimminarie

7 Tall by
5.5 Wide
by 5
Long

13.80

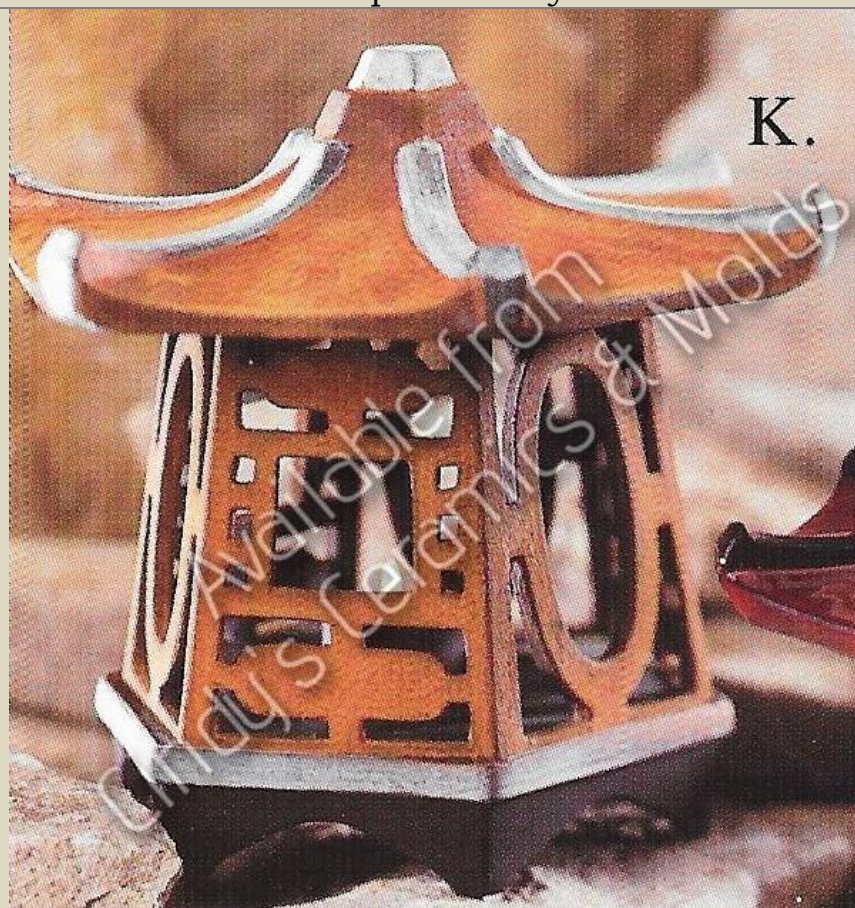
C-
4032/5



16.00

Tulip Luminary

C-4046



8 Tall by
8.5 Wide

50.00

Large Pagoda

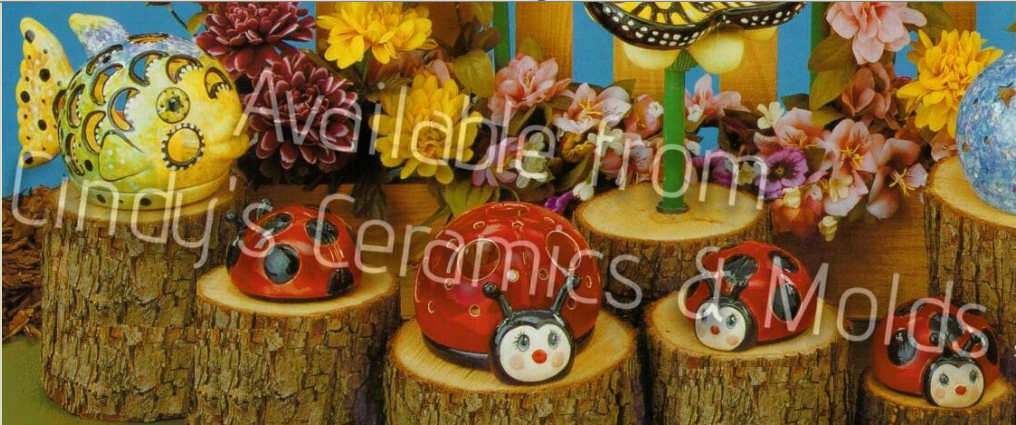
J-2130/1



9.75 Tall 30.30

Cat Light

J-2090/1



5 3/4 Wide 17.70

Ladybug Light (Shown front center)

J-2114/5



8 Wide

24.00

Frog Light

J-2118/9



8 1/2
Long

27.00

Turtle Light

