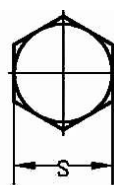
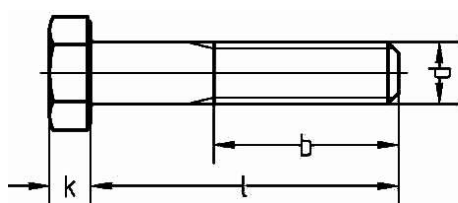




Tornillo DIN 931 Calidad 10.9. Zincado..

L (mm)	M-8 Ø	M-10 Ø	M-12 Ø	M-14 Ø	M-16 Ø	M-20 Ø	M-24 Ø	M-27 Ø	M-30 Ø	M-33 Ø	M-36 Ø
30											
35	X										
40	X	X									
45	X	X	X								
50	X	X	X	X	X						
55	X	X	X	X	X						
60	X	X	X	X	X	X	X				
65	X	X	X	X	X	X	X				
70	X	X	X	X	X	X	X				
75	X	X	X	X	X	X	X				
80	X	X	X	X	X	X	X	X	X		
90	X	X	X	X	X	X	X	X	X		
100	X	X	X	X	X	X	X	X	X		
110	X	X	X	X	X	X	X	X	X	X	X
120	X	X	X	X	X	X	X	X	X	X	X
130		X	X	X	X	X	X	X	X	X	X
140		X	X	X	X	X	X	X	X	X	X
150		X	X	X	X	X	X	X	X	X	X



p: Paso de rosca
 k: Altura de cabeza
 s: Ancho de llave
 d: Metrica
 L: Longitud
 b1: L ≤ 125 mm
 b2: 125 mm L ≤ 200 mm
 b3: L > 200 mm

d (mm)	b1 (mm)	b2 (mm)	b3 (mm)	k (mm)	s (mm)	p (mm)
M-8	22	24		5,3	10	1
M-10	26	28	45	6,4	13	1,25
M-12	30	32	49	7,5	17	1,5
M-14	34	36	53	8,9	19	1,75
M-16	38	44	57	10	22	2
M-20	46	52	65	12,5	30	2
M-24	54	60	73	15	36	3
M-27	60	66	79	17	41	3
M-30	66	72	85	19	46	3,5
M-33	72	78	91	21	50	3,5
M-36	78	84	97	22	5	4

DIN 931 clase 10.9 Zincado

Tornillo de cabeza hexagonal

Rosca parcial

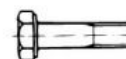
Zincado

Calidad 10.9



DACROMET®

GARANTÍA FESIT



Pernos de cabeza hexagonal
 con rosca parcial.

Norma DIN931/ DIN601

ISO4017 ISO 4014 ISO4016

