

Ryerson Auction Realty Ltd

2761 Country Lane Circle
Eagle Grove, Iowa 50533-8722
Gene Cell 515-689-3714
Telephone: 515-448-3079
FAX: 515-448-5028
ryerson@goldfieldaccess.net
www.ryersonauctionrealtyltd.com

Farm owner: Boyington Family Farm LLC

Legal description: The NE ¼ of the NE ¼ of Section 11, except 2 highway location out, T-91-N, R-24-W Wright Co, IA

Acres: 37.75 deeded

Tenant: Lease is terminated for 2018

Location from nearest town: 5 miles East of Clarion on Hwy 3, 1 mile South on Hwy 69 in the SW quadrant of the intersection.

Soil types: 88.7 CSR2 See attached sheets

Taxes: \$1,014.00 for 2016-17

FSA data, farm number: 503

Tillable acres: 35.4

Yield: Corn 157 Soybeans 40

Corn base: 19.5A Soybean 15.9

Price: \$350,000.00

Terms: Cash

The following information, although believed to be accurate, is not guaranteed to be so.

Aerial Map



©2017 AgriData, Inc.

map center: 42.714580, -93.639210



11-91N-24W
Wright County
Iowa



6/1/2017

Gold-Eagle Cooperative



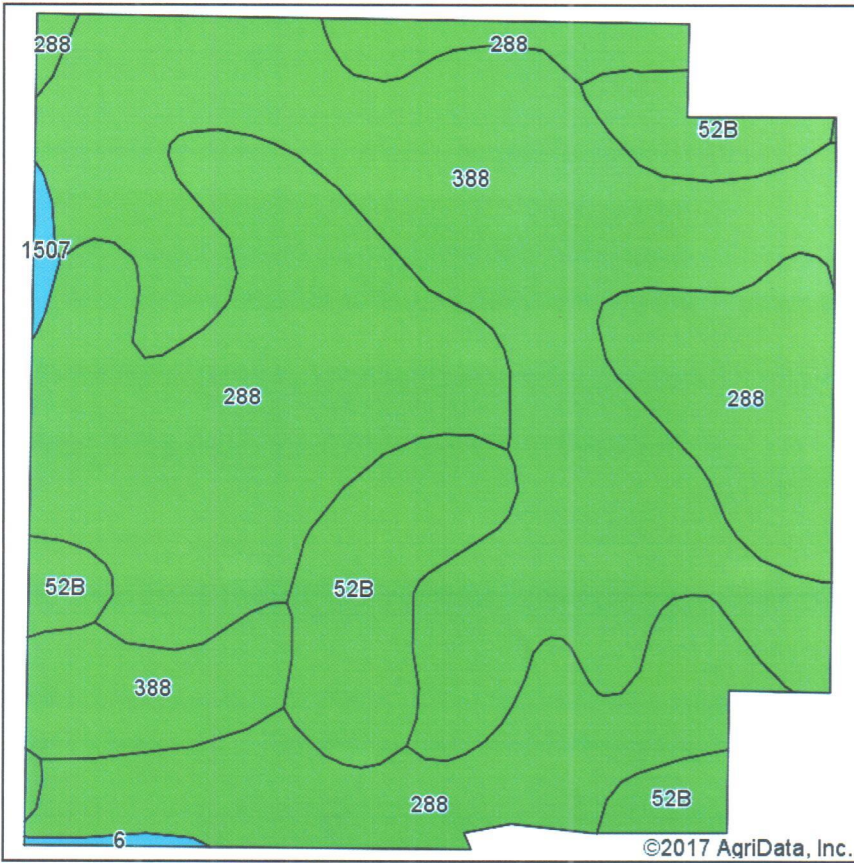
Maps Provided By:



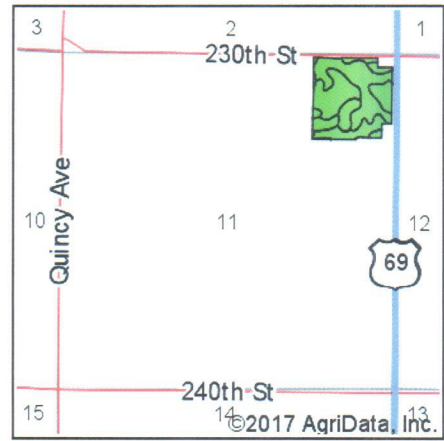
© AgriData, Inc. 2017

www.AgriDataInc.com

Soils Map



Soils data provided by USDA and NRCS.



State: **Iowa**
 County: **Wright**
 Location: **11-91N-24W**
 Township: **Lincoln**
 Acres: **35.4**
 Date: **6/1/2017**



Area Symbol: IA197, Soil Area Version: 23

Code	Soil Description	Acres	Percent of field	CSR2 Legend	Water Table	Restrictive Layer	Septic Limits	Foundation Limits	Non-Irr Class *c	CSR2**	CSR
288	Ottosen clay loam, 1 to 3 percent slopes	16.14	45.6%		1ft.	> 6.5ft.	very limited	very limited	Iw	91	84
388	Kossuth silty clay loam, 0 to 2 percent slopes	14.76	41.7%		2.6ft.	> 6.5ft.	very limited	very limited	IIw	86	77
52B	Bode clay loam, 2 to 5 percent slopes	4.25	12.0%		4ft.	> 6.5ft.	very limited	somewhat limited	Ile	91	78
1507	Brownton silty clay loam, 0 to 2 percent slopes	0.16	0.5%		0ft.	> 6.5ft.	very limited	very limited	IIw	70	72
6	Okoboji silty clay loam, 0 to 1 percent slopes	0.09	0.3%		1.3ft.	> 6.5ft.	very limited	very limited	IIIw	59	57
Weighted Average										88.7	80.2

**IA has updated the CSR values for each county to CSR2.

*c: Using Capabilities Class Dominant Condition Aggregation Method

Soils data provided by USDA and NRCS.