



The Next Generation Underwater Drone **Aquarobotman® Nemo**



The portable underwater drone, Aquarobotman® Nemo Help you explore the wonderful underwater world



Strong performance and maneuverability

Nemo can dive 100 meters with speed at 2m/s maximum. Nemo's particular patent QAS-balance™ technology not only has the conventional floating dive, forward, backward, turn, tilt posture, but also the capacity of hovering in the water, cruising and pitching in certain depth and other complex attitude. People can operate Nemo easily because of its adaptive attitude control system.



UHD 4K/30fps recording

With the highest 4K/30fps HD recording speed, rich film setting function, combined with the matrix lights and special underwater shooting filter. Nemo ensures perfect underwater shooting experience.



IOS and Android App, VR smart operation

Nemo stores and transfers video through a special cable to its Wi-Fi connector. You can then see the real-time view on the App installed on your phone or tablet. By just one click, you are ready to share the undersea creatures to your friends. You can even wear VR goggle to enjoy the experiences as if you were actually there.



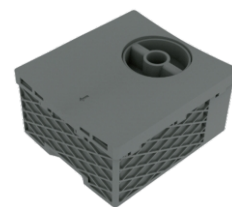
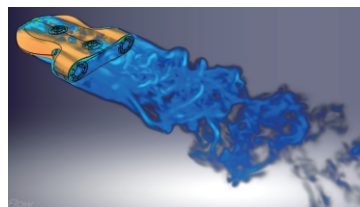
Thinner and lighter streamlined design

Nemo's streamlined design just weights 3.3kg, it can be easily put into Nemo's customized traveling backpack, the ergonomic design is more convenient for boarding, traveling.



C-Hyperhelix™ Detachable battery

Nemo is the first underwater drone that features a quick-charge modular battery cell, just bring a few backup battery cells and you can enjoy playing with Nemo as long as you like.



Geospace NZ Ltd
29G Peters way
Silverdale
Auckland 0932

www.geospace.co.nz
sales@geospace.co.nz
ph.: 021-2135518



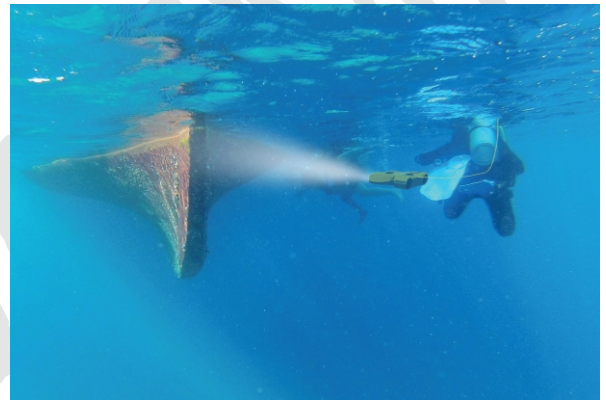
 **Yachting**



 **Fishing**



SOS Salvage & Rescue



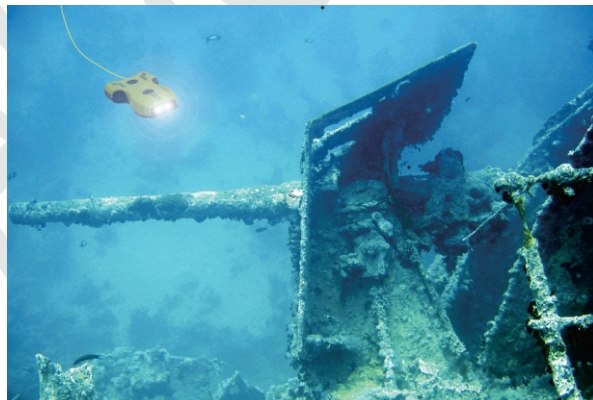
 **Ships Inspection**



 **Scuba Diving**



 **Scientific Exploration**



 **Underwater Exploration**



 **Aquaculture**

Feature Specs

Dimensions	404 (L) × 290 (W) × 114 (H) mm
Weight	3.4kg
Thruster	Two set horizontally, and two set vertically
Propeller	High-efficiency 5 blade propellers
LED	Double 2*2 adjustable Matrix LED Modules
Sensor	Depth, posture, temperature and humidity
Main sealed cabin material	PC+Glass fiber
Shell material	PPO

Performance Specs

Time of endurance	3 hours
Vertical hovering accuracy	Centimeter level
Advancing speed	Max. 2.0m/s
Maximum diving depth	100m
Camera	4K/30fps
Operating ambient temperature	-2~35°C
Posture Control	Forward/Backward Turn Left/Right Float/Pinch/Hover
System protection	Temperature protection & Battery protection

Reels Specs

Dimensions	220×220×170 mm
Weight	920g

Geospace NZ Ltd
29G Peters way
Silverdale
Auckland 0932

WiFi Base Station

Dimensions	105mm*75mm*159mm
Weight	337g
WiFi frequency	2.4G Hz

Camera Parameters

Video processing chip	Ambarella A12
Lens	FOV 150° f/2.8
Image resolution	16M (4608×3456 4:3) 14M (4254×3264 4:3) 12M (4000×3000 4:3) 8.3M (3840×2160 16:9)
Video resolution	4K: 3840×2160 30fps 16:9 2.7K: 2704×1520 30fps 16:9 1080P: 1920×1080 120fps 16:9 1080P: 1920×1080 30fps 16:9
Shooting mode of photos	Single shooting/ Continuous shooting mode/ Time-lapse shooting
Continuous shooting mode	Off, 3pic/s, 5pic/s, 10pic/s
Time-lapse shooting	Off/ 1s/ 2s/ 5s/ 10s/ 30s/ 60s
Maximum bit stream of video storage	60 Mbps
Image format	JPEG
Video format	MP4 H.264
Image quality	S.fine/fine/normal
Video quality	S.fine/fine/normal
Memory card type	32/64 GB Micro TF card (UHS-3)
Other functions	Electronic Filters/ Video watermark

Nemo Battery and Charger Specs

Capacity	4000mAh
Battery design	Detachable and waterproof
Working time	3 hours
Charge time	2.5 hours
Voltage	11.1V
Charge current	2.2A
Battery type	Polymer lithium battery
Overall weight Of battery	760g
Battery charger	Input 100-240V; Output 12.6V

WiFi Base Station Battery and Charger Specs

Capacity	2600mAh
Battery design	Detachable
Working time	8 hours
Charge time	1.5 hours
Voltage	8V
Charge current	1A

Battery type	18650 lithium battery
Overall weight of battery	150g
Battery charger	Input 100-240V; Output 8.4V

APP Control, Image Transmission and Others

Mobile device App	Aquarobotman
APP platform	IOS & Android
Real-time image transmission	720P @ 30fps
Delay	200ms (depending on actual shooting environment and mobile device)
Mobile device system version requirement	IOS 10.0 or later/ Android 5.0 or later
Max. effective signal range	50M (without interface or shield)

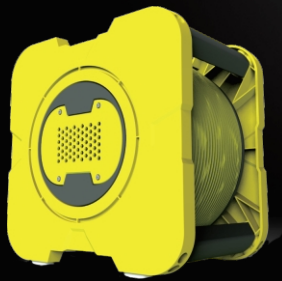
Kevlar Zero Buoyancy Cable

Length	50m/100m
Weight	0.6kg/1.1kg
Diameter	3.8mm

Nemo Special Accessories

Nemo Special Backpack

Comfortable / Waterproof / Ventilation

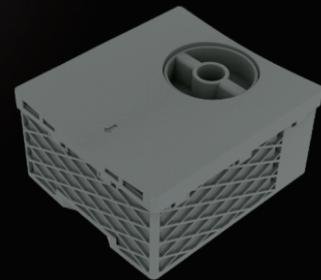


Reel

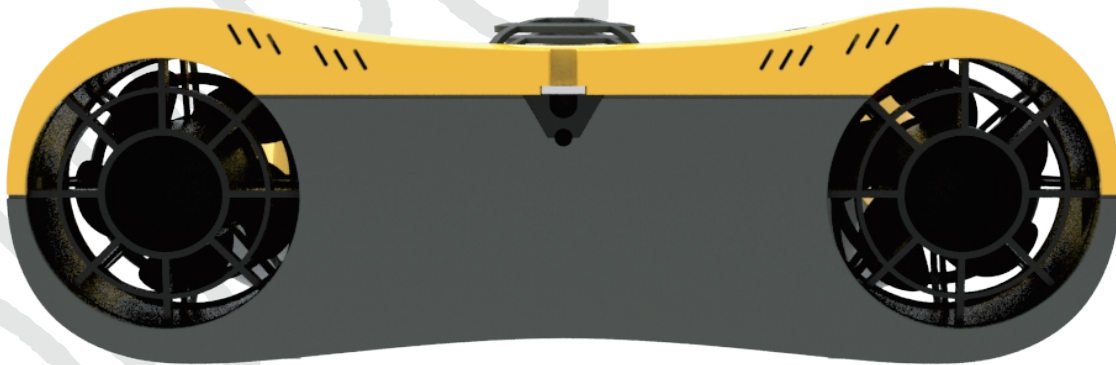
Communication / Retractable

C-HyperHelix™ Battery

Independent / Waterproof / Detachable



VR + Joystick



Geospace NZ Ltd
29G Peters way
Silverdale
Auckland 0932

www.geospace.co.nz
sales@geospace.co.nz
ph.: 021-2135518

Shenzhen Aquarobotman Science & Technology Co., Ltd.
www.aquarobotman.com