



S/M	REVISION	APP DATE
A		


**Install of one SCC Andon Board & 10 Speaker Installation Hardware as of 5/22/13**

#	Description:	Manufacture	Part/Model Number	Unit of Measure	Unit Cost	Purchase Quantity	Line Item Cost
1	3/8" 3000lb-WLL Galvanized Bolt Nut & Cotter Anchor Shackle	Fastenal Pricing	0504876	each	\$15.19	8	\$121.52
2	5/16" Grade 80 Chain 500 foot drum	Fastenal Pricing	45034	per foot	\$8.32	80	\$665.60
3	1/4" Class 6 x 19 Fiber Core Wire Rope 500 foot need about 80 per board approx \$540 for roll	Fastenal Pricing	45576	per foot	\$1.08	80	\$86.40
4	1/4" Closed Galvanized Wire Rope Thimble	Fastenal Pricing	43443	each	\$0.89	4	\$3.56
5	1/4" Drop Forged Wire Rope Clip	Fastenal Pricing	43423	each	\$5.51	8	\$44.08
6	1/2" High Strength Nut (Furnished with item 8)	Fastenal Pricing	33895	each	\$0.23	4	\$0.92
7	1/2" Heavy Lock Washer	Fastenal Pricing	42445	each	\$10.87	4	\$43.48
8	1/2"-13 x 4-1/2" Shank Length Hot Dipped Galvanized Drop Forged Eye Bolt	Fastenal Pricing	33847	each	\$0.46	4	\$1.84
9	1/2" High Strength Flat Washer	Fastenal Pricing	P3001SH	1' (10' sticks)	\$57.00	1	\$57.00
10	Unistrut Channel: 1-5/8" x 2 3/4" 12 Gage, Back-to-Back, Slotted Holes P3001SH	Unistrut (Atkore)	P1064	each	\$0.00	8	\$0.00
11	Unistrut Flat Plate Fitting: Width 1-5/8" x 1-5/8", Thickness 1/4" P1064	Unistrut (Atkore)	P2786	each	\$5.50	4	\$22.00
12	Unistrut Beam Clamp: 1-5/8" x 5" P2786	SCC	1032-006X	each	\$60.00	10	\$600.00
13	Andon Speaker, SPEAKER STATIC CNTRL 977-SPKR-R EXTERNAL	Appleton	BH-500	each	\$0.42	100	\$42.45
14	1/4" Beam Clamp: Speaker Installation	Belden	8471	each	\$0.57	1,000	\$566.36
15	Speaker Cable /Wire: Order in 1,000' spools	B-Line	BRS-32A	per foot	\$2.00	60	\$120.00
16	Bridle Rings and Saddles: 1/4"-20 x 7/8" 2 Boxes (50/Box)	General Cable	5133299E	each	\$0.17	333	\$58.22
17	Cat5e Cable: General Cable GenSPEED® 5000, 1,000 ft. Pull-Pac® II, Non-Plenum, Blue For one board using 333feet of 1000foot roll						
18	Wire Nuts: For Speaker Terminations					20	\$0.00
<b>Total Cost</b>							<b>\$2,433.43</b>

**ANDON Board... RED TAG..... Check off List**

0) BASELINE BOARD MUST BE HUNG TO PRINT. (INSTALLATION CONTRACTOR)							
1)	Prints required in ANDON PANEL. (SCC)						
2)	Tag needed both sides of ANDON Board with a. K-CONVEYOR_LB020 120.41.27.25 C29 CB#22 (example) (SCC)						
3)	Current ground wire by contractor is blue.. put green phase tape on the blue wire. (INSTALLATION CONTRACTOR)						
4)	Current common wire by contractor is red.. put white phase tape on the red wire. (INSTALLATION CONTRACTOR)						
5)	Label outside Circuit breaker on ANDON BOARD "MAIN" (SCC)						
6)	ESWP Label on both sides of ANDON BOARD (SCC) (INSTALLATION CONTRACTOR)						
7)	Terminate Speaker Wires (INSTALLATION CONTRACTOR)						
8)	Label Ethernet cable all the way to the board. (INSTALLATION CONTRACTOR)						
9)	SET IPs on ANDON Board Includes IP, subnet mask which is 255.255.255.0 and Gateway which is IP Last octet is 1 (SCC)						
10)	Label Control Breakers in Panel (SCC)						
11)	Review all 4 struts... (SCC)						
12)	Install Brass Tags, Per Plant Engineering Direction at Install of ANDON Board						

Installation contractor responsible for all local practices/codes and structural load verification

 <p>Stable Controls Corporation 30460 WIXOM ROAD WIXOM, MI 48186 925-44400 FAX (248) 926-4412</p>	Customer Approval	By	Approved for Prod	Scale	Sheet #	Project #	Contract #
	<p>Full Matrix Board C-SIZE INSTALLATION DRAWING</p>	MT	App	W/12/MTV	N/A	982CINST-SCC	

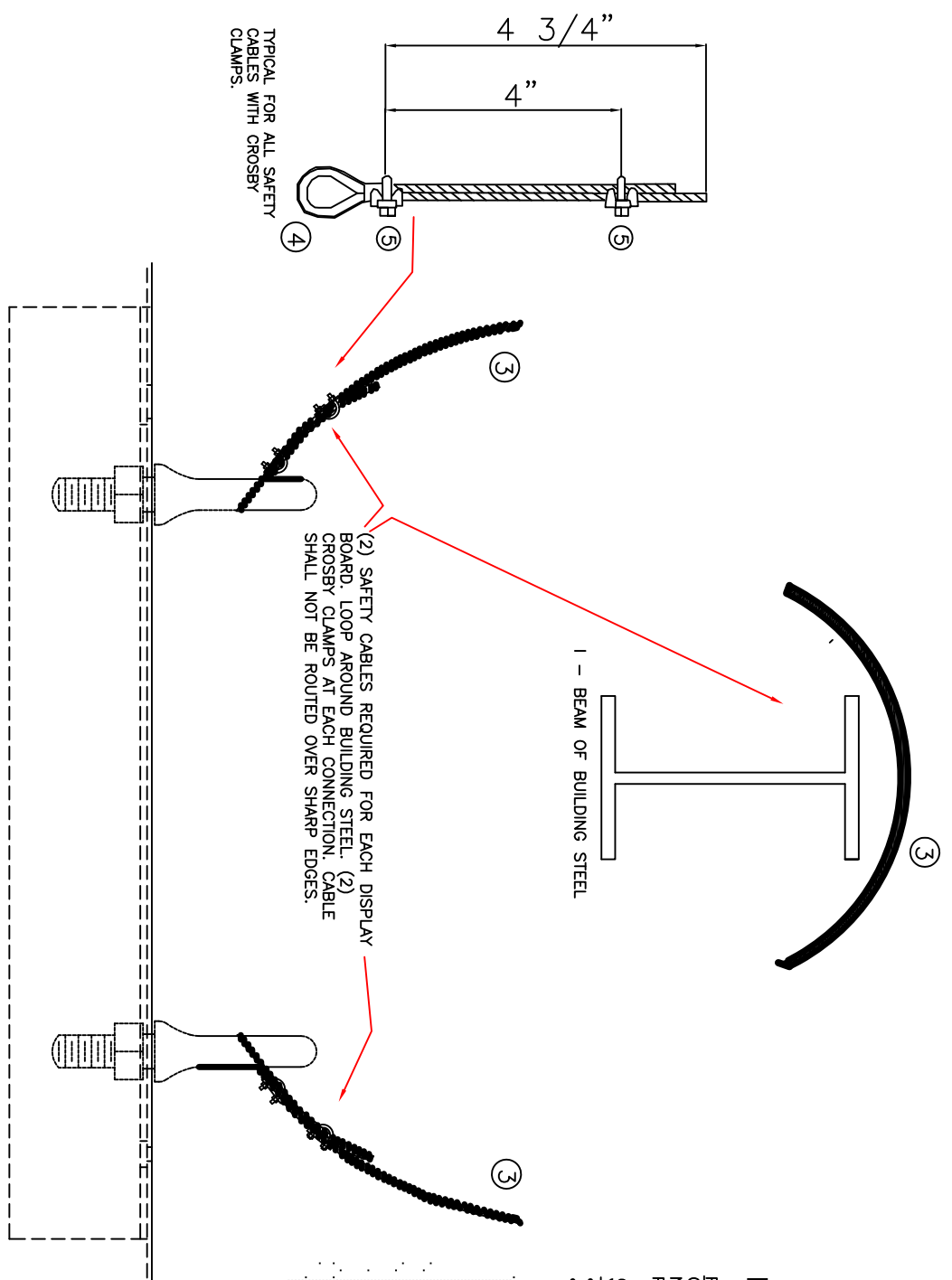
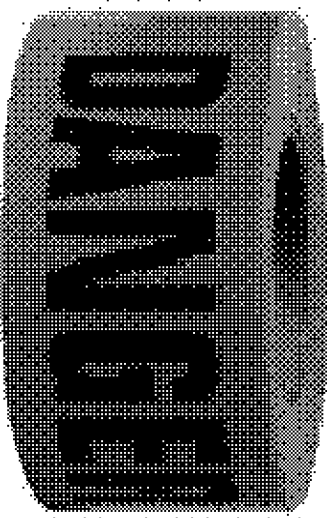
SWM	REVISION	APP DATE
A		

### BARRICADE PERIMETER TAPE

RED DANGER TAPE (INDICATES HAZARD TO PEOPLE). CROSSING THIS BARRICADE COULD LEAD TO INJURY. NEVER CROSS RED BARRICADE TAPE UNLESS GRANTED PERMISSION BY AN AUTHORIZED EMPLOYEE.

### SOME EXAMPLES INCLUDE:

- OVERHEAD WORK, ARIAL LIFT, MOBILE CRANE, ETC.
- RIGGING APPLICATIONS



### SEE WEB LINKS FOR MORE INFO.

- [http://www.constructionsecurity.com/toolbox/documents/wireropcableclips\\_000.pdf](http://www.constructionsecurity.com/toolbox/documents/wireropcableclips_000.pdf)
- <http://www.fidlock.com/wrclips.html>
- [http://www.softeng.net/index.php?option=com\\_content&view=article&id=862&Itemid=178](http://www.softeng.net/index.php?option=com_content&view=article&id=862&Itemid=178)

### WARNINGS AND APPLICATION INSTRUCTIONS.

- THIS APPLICATION REQUIRES TWO CROSBY WIRE ROPE CLAMPS - INSTALLATION INSTRUCTIONS LIVE END REST IN THE SADDLE.
- 1st CLAMP APPLY APPROXIMATELY 3/4" FROM DEAD END UBOULT IS PLACED OVER DEAD END OF 1/4" WIRE ROPE.
  - 2ND CLAMP APPLY NEAR THE THIMBLE.
- NOTE: ALL NUTS TIGHTEN EVENLY, ALTERNATING TURNS.

Installation contractor responsible for all local practices/codes and structural load verification

	Controls Logistics Communications	Customer Approval By: _____ Date: _____	Title <b>FULL MATRIX BOARD          C-SIZE INSTALLATION          DRAWING</b>
	30460 WIXOM ROAD WIXOM, MI 48189 FAX (248) 926-4412	Released for Prod. Date: _____ Scale: N/A	Part # SCC 982 Part # 982CINST-SCC