

1967

Shakespeare
ARCHERY CATALOG





Shakespeare

About the front cover:

Dick Wilson, Shakespeare Archery Division Manager, took this unusual Axis deer trophy in the Hill Country of Texas where exotic game hunting is currently popular. The antlers on the Axis (or Chital) deer measured 29 $\frac{3}{8}$ " on each side. Wilson is wearing new Vist-O-Flage bowhunting clothing. Red camouflage color is invisible to animals and adds a safety factor.

Photo by Byron Dalrymple



YUKON NECEDAH OCALA PROFESSIONAL CUSTER SUPREME KAIBAB TRIDENT TITAN

PROFESSIONAL

*Shakespeare's thrilling
new tournament bow*

Professionalism! It's here in this BIG ONE of our bold, new breed. Any shooter will know the instant he brings the "Pro" to draw that it's meticulously right. *It fits like part of himself!* What makes the Professional different? *Perfection* in every facet. Exquisite balance and weight distribution through precise stabilization; a curve-softened grip (semi-pistol) that fits the hand so comfortably, for straight or broken-wrist shooting; the just-right length; and the velvety feel of smo-o-oth, surging release. The handle is art-crafted, a triple laminate of Rosewood and zebra woods; the glass color is pearl white; nock overlay is five-layer Rosewood and maple. Truly a thing of beauty — the bow of bows!

No. X10 — 68", with S71-68" string. Draw weights: 30, 35, 40, 45 pounds at 28 inches. Right or left hand. Each... **\$150.00**

Limb width — 2"
Sight window — 8"
Arrow rest and plate —
Rest-n-plate

Brace height — 8 $\frac{3}{8}$ " from
pivot point
Packaging — deluxe case
Shipping wt. — 7-lb. 12-oz.



Shakespeare TITAN

Big... Bold... with the Will to Win.

New on the scene: The Titan, designed with 'build' and muscle to cast arrow after arrow — on line — without bow fatigue or lessened efficiency. Just the ticket for the ambitious up-and-down shooter who is determined to move up a class — and needs the consistency that comes with *confidence* in his bow. Graceful, lithe and beautiful, the Titan is balanced scientifically — and stabilized — for the optimum in accuracy and speed. Its handle is a laminate of exotic woods: bubinga and imbuya. Glass color of face and back is moon white. Four layers of fine bengé and maple form the hand-polished nock overlay.

No. X15 — 66", with S71-66" string. Draw weights 30, 35, 40, 45 pounds at 28 inches. Right or left hand. Each.....\$115.00

Limb width — 2"
Sight window — 7"
Arrow rest — vertical feather
Arrow plate — calf hair

Brace height — 8 $\frac{3}{8}$ " from pivot point
Packaging — cloth case
Shipping wt. — 4-lbs.



Shakespeare SUPREME

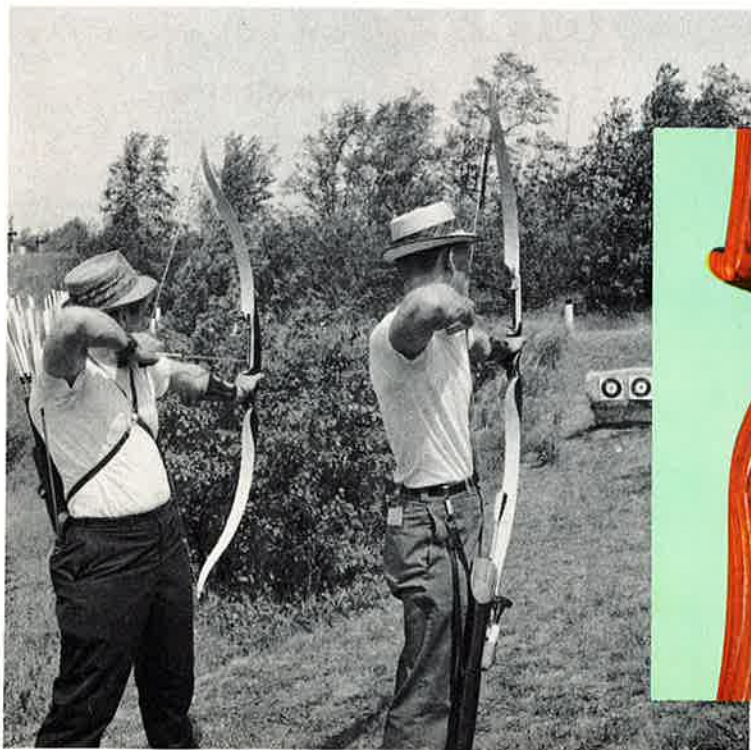
Top-flight basic tournament bow.

Here are bow-making art and craftsmanship to earn the admiration of the most discerning archer. The Supreme is fashioned to please and satisfy his inner craving for fine equipment — yet priced within easy reach of the archer who gives the sport his personal priority. The Supreme comes in six draw weights to fit particular requirements. In sublime shooting ease and pin-point accuracy, it easily surpasses any other bow in its price range, and it's stabilized, too! Fine features include bengé wood handle, white glass, and a deluxe three-layer nock overlay of bengé and maple. Any archer, student or pro, will be proud to bring his Supreme to the meet!

No. X16 — 66", with No. S71-66" string. Draw weights: 25, 30, 35, 40, 45, 50 pounds at 28 inches. Right or left hand. Each..... **\$75.00**

*Limb width — 1¾"
Sight window — 7"
Arrow rest — vertical feather
Arrow plate — hair*

*Brace height 8½" from pivot point
Packaging — cloth case
Shipping wt. — 3-lb. 7-oz.*





Shakespeare

KAIBAB

Shakespeare's new Pride of the Pack

Short and sweet—and power-packed . . . This is the *Kaibab*, Shakespeare's bold new weapon for the bow hunter. Outstanding in every shooting characteristic, but easy on the wallet. The *Kaibab* was designed specifically for hunting, with duo-flex limbs which give it speed to burn, yet provide a sm-o-o-othing of the release — making it virtually shockless. Handle is a triple laminate of fine bengé and zebra woods. Face and back are olive green glass (color blends naturally with foliage). Nock overlay is bengé and cherry in a three-layer laminate. Perfectly stabilized for the ultimate in hunting bow accuracy.

No. X27 — 58", with No. S71-58" string. Draw weights: 35, 40, 45, 50, 55, 60 pounds at 28 inches. Right or left hand. Each \$75.00

Limb width — 2"
Sight window — 4½"
Arrow rest and plate — Flexrest

Brace height — 7¾" from pivot point
Packaging — cloth case
Shipping wt. — 2-lb. 15-oz.





Shakespeare **Ocala**

Powerful new hunting season prolonger

Packs the potency to bring home many a fine trophy. A superb all purpose design, extremely fast and stable, with precision balance. A nifty, compact "five-foot-two" for fast easy handling in the brush or blind, as well as in the open field. Quality features include: Finest laminated bengé and zebra wood semi-pistol grip handle; outdoor-blending olive colored glass; and three-layer nock overlay of bengé and cherry. A great addition to the bold new breed of Shakespeare bows, especially for the gun hunter who wants to e-x-t-e-n-d his season in the woods.

No. X17 — 62", with S71-62" string. Draw weights: 30, 35, 40, 45, 50, 55, 60 pounds at 28 inches. Right or left hand. Each.....\$75.00

Limb width — 2"
 Sight window — 6"
 Arrow rest — vertical feather
 Arrow plate — calf hair

Brace height — 7⁷/₈" from pivot point
 Packaging — cloth case
 Shipping wt. — 2-lb. 14-oz.



NECEDAH



"Wherever there's bow hunting — you'll hear of Necedah"

Handsome! Fittingly named *Necedah*, to commemorate that famed bow-hunting spot. Designed explicitly for demanding shooters who know what they want — and now further refined for 1967 for even more quality and smo-o-oth performance, at "a price that's nice." *Necedah* is light, fast, and short enough to handle well in a blind or out of a tree. Outstanding features: Semi-pistol grip, contoured thumb rest and bengé riser; nock overlay also bengé. Cinnamon color glass face and back blend with the out-of-doors.

No. X26 — 58", with S71-58" string. Draw weights: 35, 40, 45, 50, 55 pounds at 28 inches. Right or left hand. Each.....\$60.00

Limb width — 1¾"

Sight window — 4½"

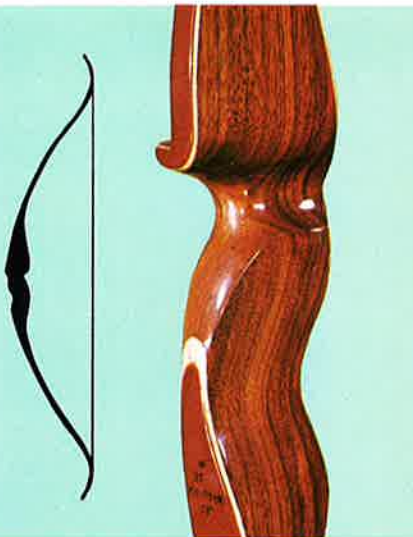
Arrow rest — vertical feather

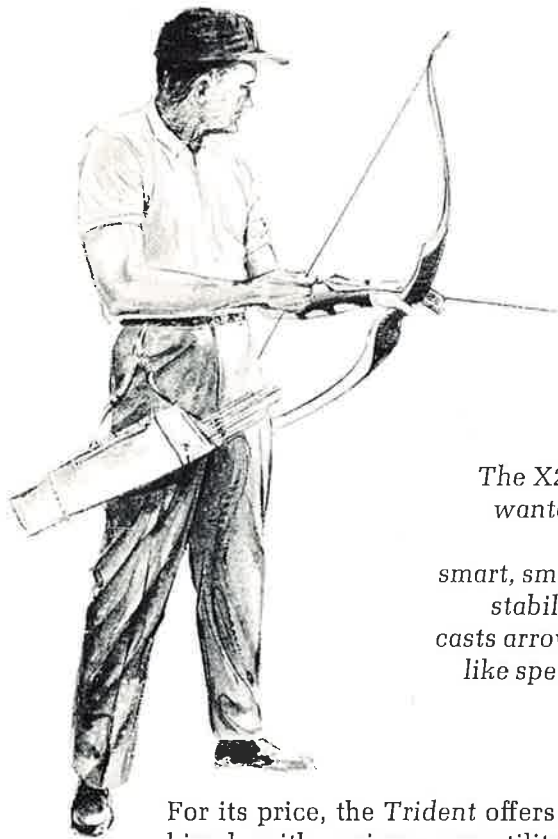
Arrow plate — clipped calf hair

Brace height — 7¾" from pivot point

Packaging — plastic case

Shipping wt. — 2-lb. 6-oz.





TRIDENT

The X25 Trident is everything ever wanted in a fine performing, truly all-purpose bow. Trident is smart, smooth, and exceptionally well stabilized. With speed to spare, it casts arrow after arrow with machine-like speed and undiminished agility.

For its price, the *Trident* offers the ultimate in appearance combined with unique versatility of performance, deliberately "designed-in" by Shakespeare experts. *Trident* is a fast bow, fashioned in top-grade fiber glass and laminated wood. The 64-inch length is comfortable to handle in the field, yet long enough to ensure the smoothness of cast so desirable for tournament shooting. Luxurious handle, custom-contoured of imbuaya and maple; face and back of sandalwood fiber glass; shock-absorbing arrow rest, clipped calf hair plate and dacron string.

No. X25 — 64", with No. S71-64" string. Draw weights: 25, 30, 35, 40, 45 lbs. at 28 inches. Right or left hand. Each..... **\$50.00**

Limb width — 1 3/4"
 Sight window — 5"
 Arrow rest — vertical feather
 Arrow plate — calf hair

Brace height — 7 3/4" from pivot point
 Packaging — plastic case
 Shipping wt. — 2-lb. 11-oz.



Shakespeare EQUIPMENT *For outdoor fun, and recreation.*

Archery, one of America's fast growing sports, can be fun and a rewarding physical fitness activity as well. Many families find archery a wonderful way to achieve family togetherness. For healthy outdoor recreation it's hard to beat archery — the romantic sport of the ages.



CUSTER

Originally designed as the best possible hunting bow for the price, the new stabilized *Custer* is now destined for great success as an *all-around* performer. It is ideal for schools, camps and recreational programs. Shakespeare quality throughout — materials, construction, craftsmanship and appointments. Fine cherry handle with dark colored glass and grooved nock. A truly spectacular bow . . . and an outstandingly best-buy in its price range.

No. X22 — 62", with S71-62" string. Draw weights: 25, 30, 35, 40, 45, 50 pounds at 28 inches. Right or left hand. Each **\$40.00**

Limb width — 1½"	Brace height — 7½" from pivot point
Sight window — 5"	Packaging — plastic case
Arrow rest and plate — calf hair	Shipping wt. — 2-lbs.

YUKON

The *EXTRA BIG VALUE* in Shakespeare's bold new breed of bows for '67 is this sturdy, economical, well-crafted full working recurve bow, fashioned to the hunter as well as for recreational pleasure. The *Yukon* is ruggedly built to take the strenuous beating of beginners in physical education classes, summer camps and recreation programs. For its size, it has surprising speed and stability, and handles with all the feel and ease of a high priced composite. Its appointments can be enumerated; outstanding are: (1) the long wear vertical feather rest (2) an arrow plate of calf hair (3) a polished handle of maple wood which is contoured for a palm-pressure fit. Face and back are neutral color glass.

No. X24 — 60", with S71-60" string. Draw weights: 25, 30, 35, 40, 45, 50 pounds at 28 inches. Right or left hand. Each **\$30.00**

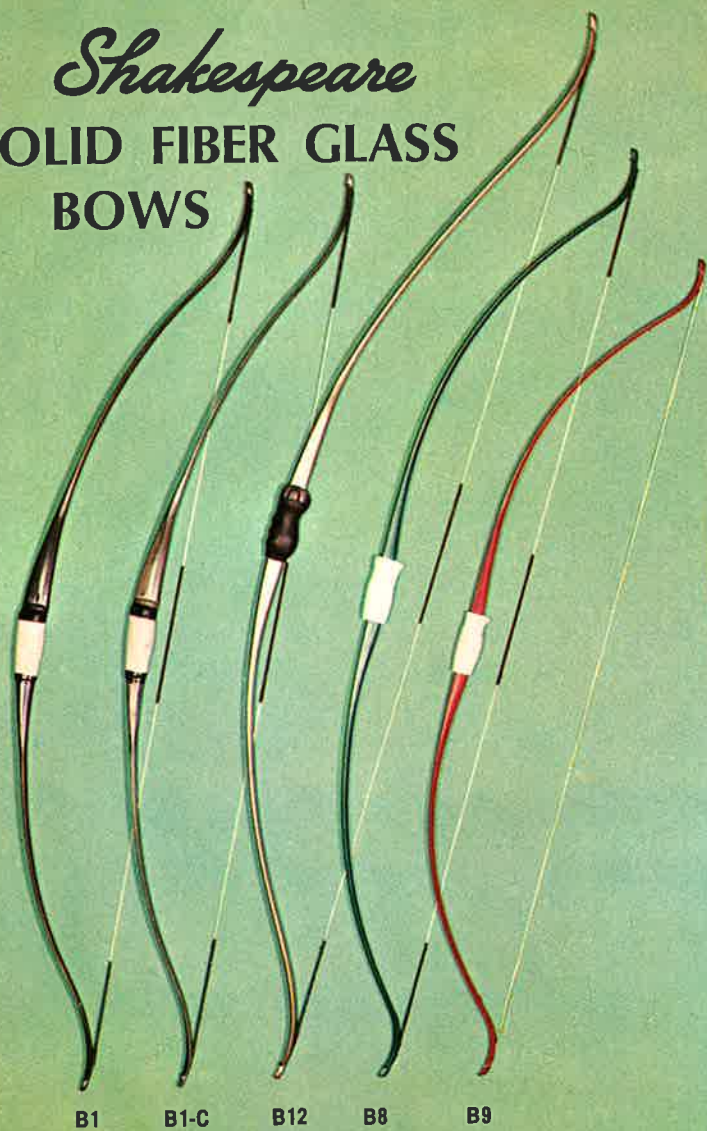
Limb width — 1½"	Brace height — 7½" from pivot point
Sight window — 4½"	Packaging — plastic case; box
Arrow rest and plate — leather	Shipping wt. — 1-lb. 14-oz.

No. X22

No. X24

Shakespeare

SOLID FIBER GLASS BOWS



B1 B1-C B12 B8 B9



Guaranteed, Unbreakable Fiber Glass Bows

All Shakespeare solid bows are pressure molded with parallel glass fibers running the full length of the bow. Color is molded in — a permanent part of the bow. All solid bows are specially card mounted and shrink-film packed for maximum display and to assure fresh, clean merchandise.

No. B1 HUNTER — 55". Charcoal finish; center shot sight window, leather grip and precision-machined nocks; stranded bow string (S71-55"). Right hand only. 35, 40, 45, 50, 55, 60 lb. draw weights at 28". Each.....\$20.00
Recommended brace height: 6½" Shipping wt.: 1 lb. 7 oz.

No. B1-C HUNTER (Camouflage) Same as No. B1 Hunter above except in camouflage finish. 40, 45, 50 lbs. at 28". Each..\$20.00

No. B12 OMNI-BOW — 64". Ideal for hunting, field and instructional uses. Has full 6" sight window, semi-pistol grip, built-in arrow plate; machined nocks, Dacron string (S71-64), double-looped; metallic coppertone color. Right hand only. Draw: 25, 30, 35, 40, 45, 50 lbs. at 28". Each.....\$18.00
Recommended brace height: 7" Shipping wt.: 1 lb. 9 oz.

No. B8 ROCKET — 56". Recommended for archery instructional use. Excellent for value-minded buyers. Green; semi-pistol grip for right or left-hand shooting. Stranded Dacron bow string (S71-56"), double-looped. Draw weights: 20, 25, 30, 35, 40, 45 lbs. at 28". Each.....\$10.00
Recommended brace height: 6½" Shipping wt.: 1 lb. 2 oz.

No. B9 FURY — 50". BIG VALUE in working recurve bows. White plastic dual "view-over" grip for right or left-hand use. Dacron string (S71-50"). Draw: 18 lbs. at 24". Each.....\$7.00
Recommended brace height: 6" Shipping wt.: 14 oz.

Shakespeare

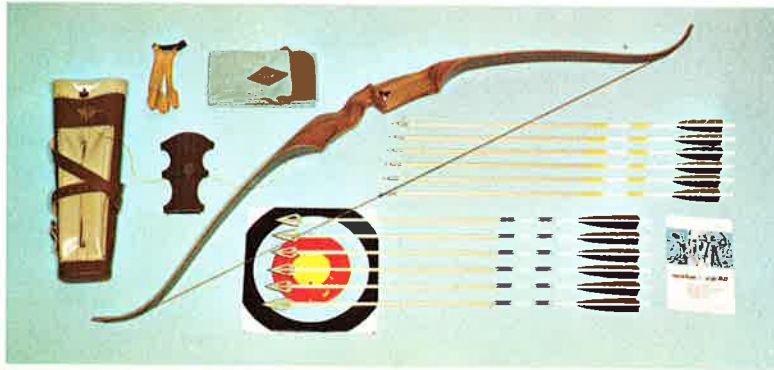
DELUXE LAMINATED BOW SETS

The ideal gift for presentations, graduations, birthdays or special events. Nicely pre-packaged in decorative display carton with over-pack. Four sets (KX17, KX26, KX25 and KX22) special for hunting, with ½ doz. broad head arrows. No. KX24, an all-purpose set with target arrows only. No. KX24 set can be obtained not carded (as No. CKX24) in a re-shipable carton.



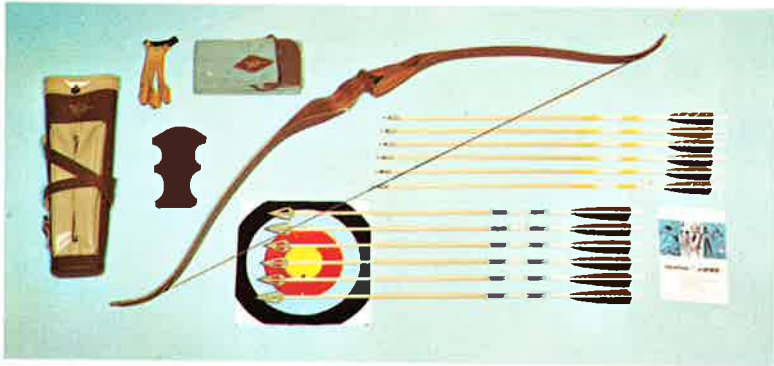
PRESENTATION-PACKED SETS

Sales-engineered for that 'gift-touch' look, as well as to provide a complete matched-and-balanced outfit in one package. Cardboard display carton is white, to show off the archery tackle to its most colorful advantage.



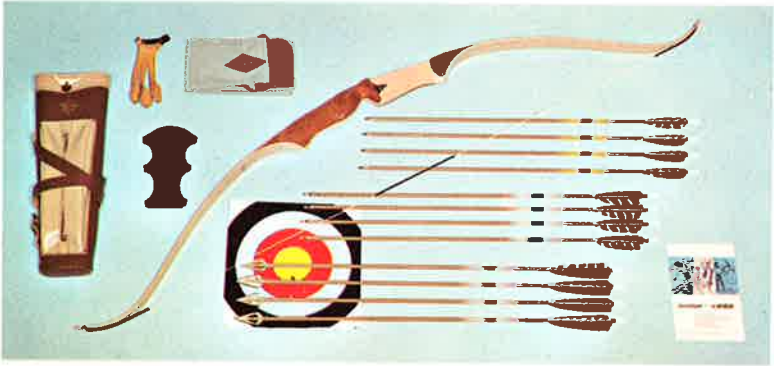
No. KX17 HUNTING SET — \$115.00

No. KX17 — Here's a package of archery splendor that will turn the eye of any bow hunter. Contains the beautiful X17 laminated bow, 45 pound draw weight with stranded Dacron bow string; also 1/2 dozen matched 28" Port Orford cedar 4-blade hunting arrows and 1/2 dozen matched cedar field arrows. In the package is a bow case, back quiver, shooting glove, arm guard, target face and instruction booklet. Complete set in presentation box (45 lb. No. X17-62" bow). Each **\$115.00**
Shipping weight: (9-lb. 3-oz.)



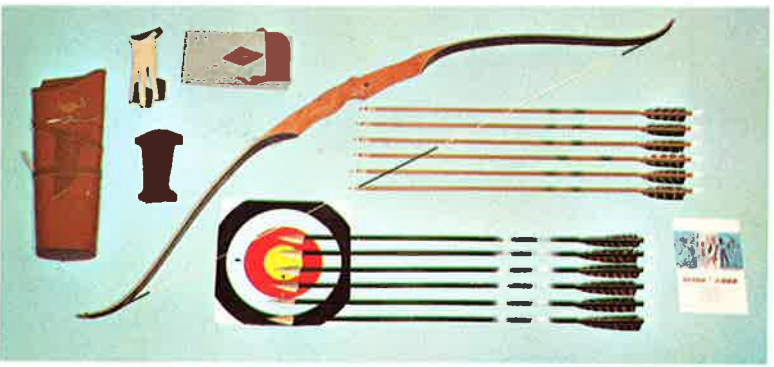
No. KX26 — \$95.00

No. KX26 HUNTING SET — This might well be labeled the "Necedah Prize Package" for it contains the fabulous Necedah bow, 45 pound draw weight with stranded Dacron bow string; also 1/2 dozen matched 28" Port Orford cedar 4-blade hunting arrows and 1/2 dozen matched arrows with field points. Also included in this package: cloth bow case, back quiver, shooting glove, arm guard, target face and instruction booklet. Complete Necedah set packed in presentation box. (45 lb. No. X26 bow). Each **\$95.00**
Shipping weight: (8-lb. 8-oz.)



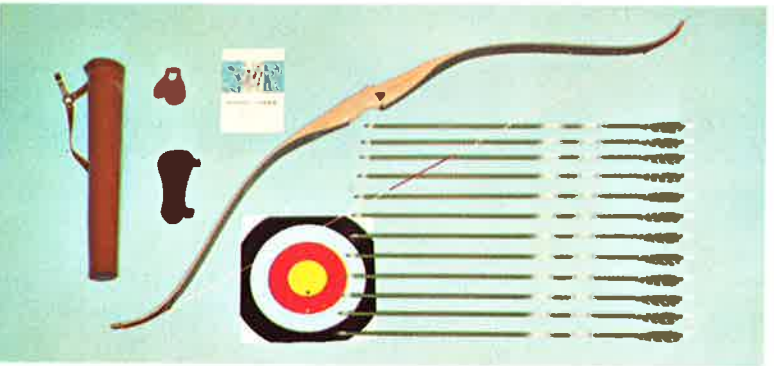
No. KX25 HUNTING SET — \$85.00

No. KX25 — Equipped with four 4-blade hunting arrows, four matched field arrows, and four matched cedar target arrows, all 28" long, this set can be used for almost any archery purpose — even by an archer who draws a "45". The smooth 64" Trident bow in this set is stabilized. With it is a complement of prime archery tackle along with big capacity quiver, arm guard, shooting glove; bow case and 8-page, 2-color shooting and archery guide. Complete set in presentation gift box. Each **\$85.00**
Shipping weight: (8-lb. 14-oz.)



No. KX22 HUNTING SET — \$65.50

No. KX22 — A FIRST CLASS, quality hunting outfit at reasonable cost. Contains the sleek, top performing X22 bow in 45 lb. hunting weight; also a complement of tackle including 1/2 dozen matched cedar field arrows; 1/2 dozen 3-blade hunting arrows, both 28 inch length; set also has a quiver, arm guard, shooting glove, bow case and instruction booklet. Complete, including 45 lb. No. X22 in presentation box. Each **\$65.50**
Shipping weight: (7-lb. 9-oz.)



No. KX24 — \$47.50

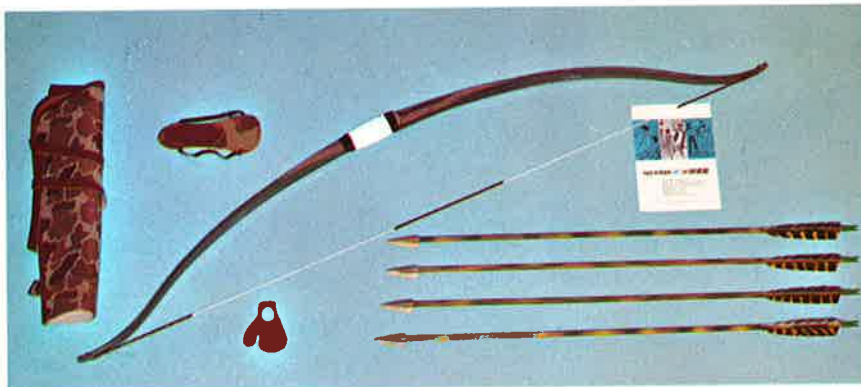
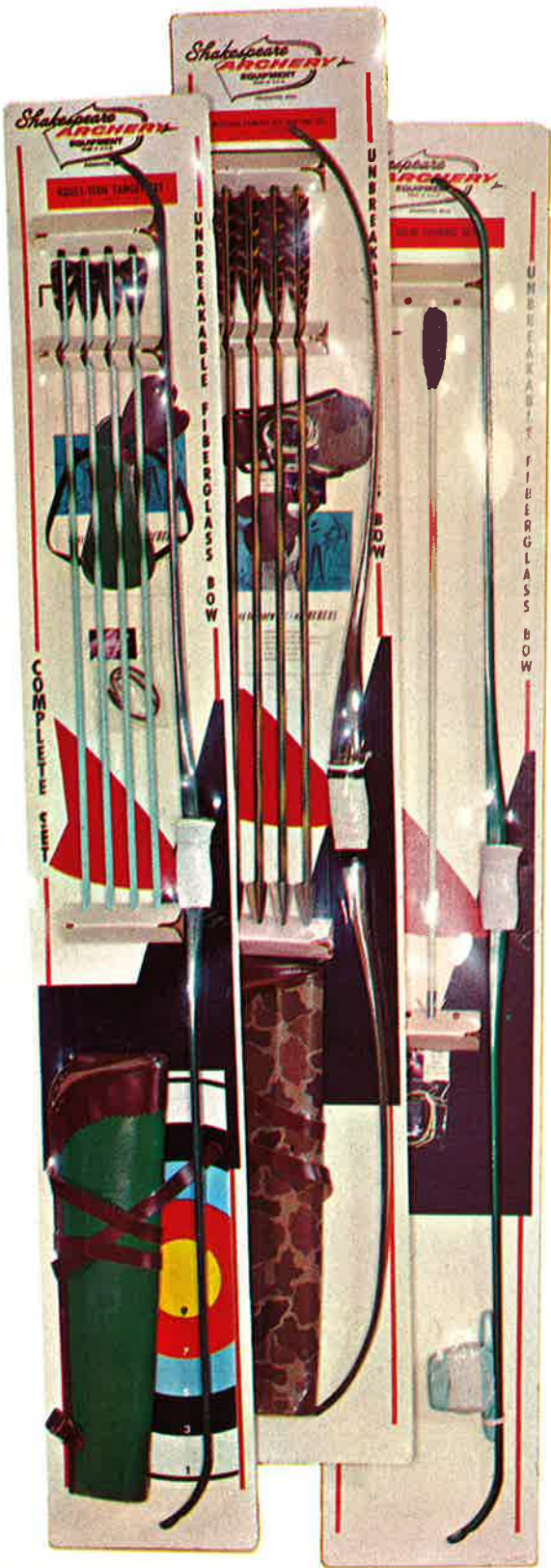
No. KX24 TARGET SET — Here's everything ever needed in a complete laminated set that will really appeal to the serious, new archery devotee. It's also excellent for backyard family archery fun because of its lightness and durability. Also recommended for camp, school or recreation shooting. Contains: 30 lb. No. X24 — 60" bow; also one dozen matched cedar target arrows, side quiver; shooting tab and arm guard; target face and "ABC's of Archery" instruction booklet. Set in presentation box. Each **\$47.50**
Shipping weight: (7-lb. 2-oz.)

Shakespeare

CARDED SETS

COMPLETE OUTFITS FOR
HUNTING, BOW FISHING, AND
RECREATIONAL SHOOTING.

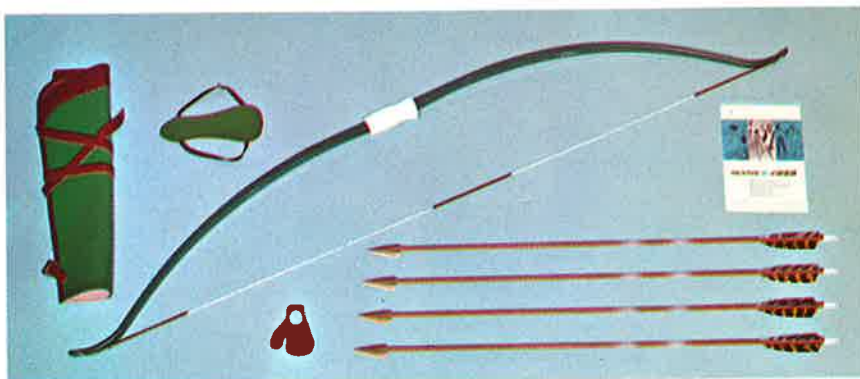
Pilfer-proof skin packaging keeps tackle
clean and protects against damage.



No. K1-H or CK1-H HUNTER SET — Ready to take to the woods is this all camouflaged hunting set. Contains the 55" No. B1 bow. (45 lb.), four 3-blade camouflaged Port Orford cedar arrows—matched to bow. Quiver and arm guard are also camouflage finished. Set also includes a shooting tab and helpful instructional booklet. **No. K1-H Each \$30.00**

Minimum dealer order, 3 sets. Shipping wt.: 10-lb.

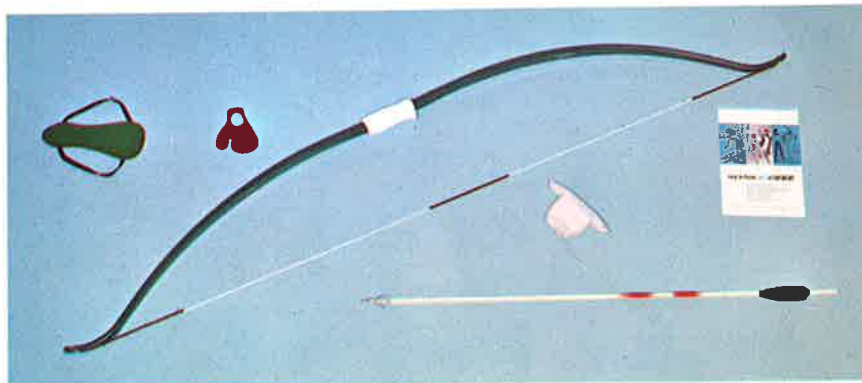
No. CK1-H. Not carded. Items above in reshippable parcel post carton. Shipping size 71 $\frac{3}{4}$ " , wt. 3 lbs. 11 oz. Each **\$30.00**



No. K8-H or CK8-H — 'ROCKET' HUNTING SET — With this set and a license, the bow hunter is ready to go! Any gun hunter who wants to extend his hunting pleasure will like this one. Contains: 56" No. B8 Rocket bow (45 lb.), four 28" 3-blade cedar hunting arrows, back quiver, arm guard, shooting tab and instruction booklet. **No. K8-H Each . . . \$17.00**

Minimum dealer order, 3 sets. Shipping wt.: 9-lb. 3-oz.

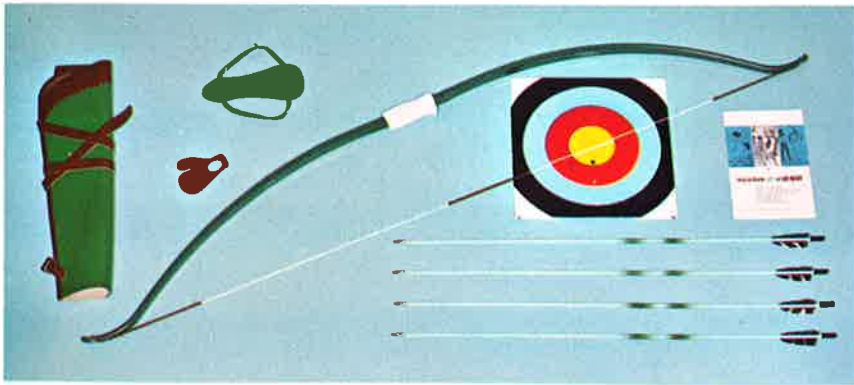
No. CK8-H. Items not display carded. In reshippable parcel post carton, 71 $\frac{3}{4}$ " , wt. 3 lbs. 4 oz. Each **\$17.00**



No. K8-F or CK8-F — 'ROCKET' BOW FISHING SET — Here is a complete outfit, all set for "rough fish" shooting; contains an easy to carry 56" bow, plastic bow reel (tapes to bow) with 50 feet of famous Shakespeare 70 lb. test. Wexford line. Also in this set: 30" barbed fish arrow, arm guard and shooting tab. Rocket bow in set is 45 lb. at 28". **No. K8-F Each \$15.00**

Minimum dealer order, 3 sets. Shipping wt.: 8-lb. 6-oz.

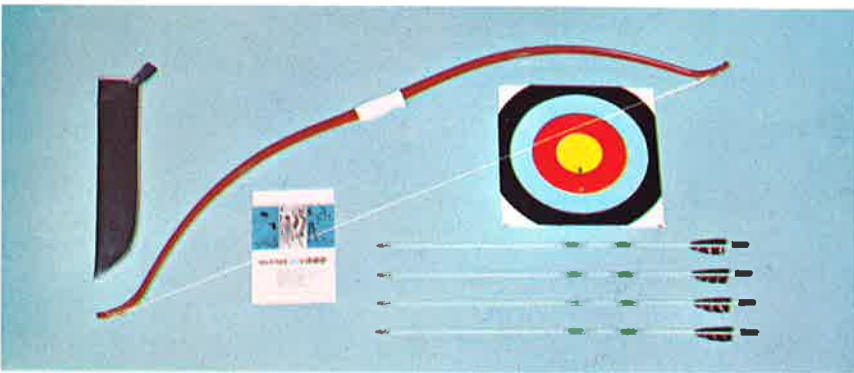
No. CK8-F. Not carded, but items above in Parcel Post carton, reshippable. Shipping size 71 $\frac{3}{4}$ " , wt. 2 lbs. 15 oz. Each **\$15.00**



No. K8-B or CK8-B — 'ROCKET' TARGET SET — This complete set meets the need of adults or teenage archers who may not want to get expensively involved. Contains No. B8 bow (25 or 35 lb.), four 28" cedar target arrows; matching back quiver and arm guard, with shooting tab, target face and instruction booklet. **No. K8-B** set. Specify 25 or 35 pound draw weight. Each.....\$15.00

Minimum dealer order, 3 sets. Shipping wt.: 9-lb.

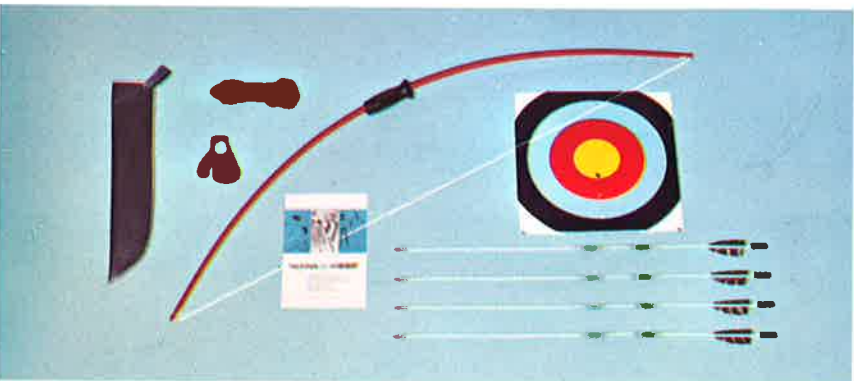
No. CK8-B. Items are display carded. In reshippable Parcel Post carton, shipping size 71 7/8", wt. 3 lbs. 2 oz. Specify 25 or 35 pound draw wt. bow. Each.....\$15.00



No. K9 or CK9 SUB-TEEN 'FURY' ARCHERY SET — A popular set; just right for the sub-teen shooter intrigued with archery. Also recommended for Scout merit badge work. Contains: the recurved B9 Fury bow (15 lb. at 24"), four 24" cedar arrows, saber belt quiver, target face and instructions. **No. K9** Each.....\$9.75

Minimum dealer order, 3 sets. Shipping wt.: 7-lb.

No. CK9. Items as above, not carded. In parcel post reshippable carton; size 71 7/8". Wt. 2 lbs. 12 oz. Each.....\$9.75



No. K10 or CK10 ARCHERY SET — Here's everything needed by the youngster who wants to join Mom and Dad in back yard fun. Contains the red 48-inch glass fiber bow, Dacron string, four 18" wood arrows with metal target points and plastic nocks; arm guard, shooting tab, saber quiver; 4-color 16" target face and instructions. **No. K10** Each.....\$7.50

Minimum dealer order, 3 sets. Shipping wt.: 5-lb. 14-oz.

No. CK10. Items as above, not carded in parcel post reshippable carton; size 71 7/8", wt. 2 lbs. 9 oz. Each.....\$7.50



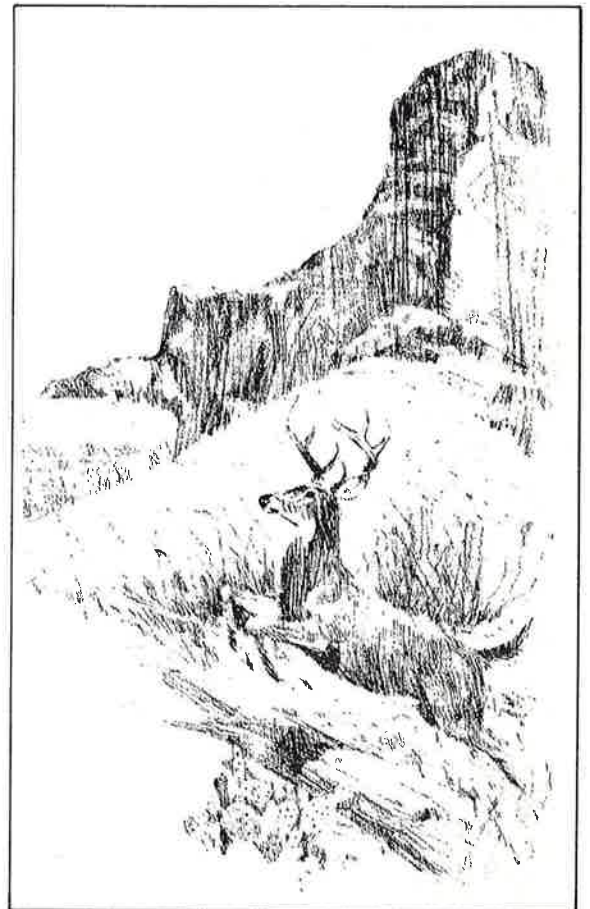
LIL ARCHIE

KID'S SET

No. K5 — Here is an excellent sports gift and toy item for the youngster — four to eight years of age — who has the archery bug. This carded set, sheathed in poly shrink film, contains the 36-inch red UNBREAKABLE FIBERGLAS bow (8 lb. at 18 inches); 2 brightly colored suction cup safety arrows; and the card makes up into a self standing target with bullseye on one side, wildcat on the other.

Each.....\$4.95

Dealers note: Minimum order 12 sets. Shipping weight: (12-lb.)



BRAND NEW

"RIFLED" Fiberglas ARROWS

With Patented Spiral Markings

Now Shakespeare has merged all its Fiberglas* technical knowledge, resources and facilities to provide the archer with something new — and outstandingly *different* — a 'RIFLED' arrow of specially-processed Fiberglas. No other arrow on the market like it! Competing arrows of woven glass construction are prone to shatter (and are most difficult to balance accurately); but Shakespeare 'RIFLED' arrows, made by our patented Howald Tubular Glass Process, retain true balance — always. Also, each arrow is individually marked with its correct spine weight (*plus or minus 2½ lbs.*) Nock-sets are one-piece construction, in break-resistant nylon. Shakespeare 'RIFLED' arrows also pull out of the target easily and smoothly, unlike so many other arrows whose finish becomes tacky from friction heat. 'RIFLED' arrows are stronger, retain their straightness, and are unaffected by weather conditions.

Shakespeare 'RIFLED' arrows, including Professional Grade from 45-lb. draw weight and up, are made with camouflaged olive green shaft. (Fine for bowhunting!) 'RIFLED' arrows in draw weights of 40 pounds and less have the famous Shakespeare white shaft with spiral markings. All arrows with points are for 28" draw; are precision-fletched and attractively crested. Fletch on target points is 3½"; fletch on all others, 5". Specify catalog number and spine weight when ordering.

SHAKESPEARE RIFLED ARROWS

- A20-4 (4-blade broadhead). 40-45-50-55-60 spine weight. 6-pak...\$22.00
- A20-3 (3-blade broadhead). 40-45-50-55-60 spine weight. 6-pak...\$22.00
- A20-2 (2-blade broadhead). 40-45-50-55-60 spine weight. 6-pak...\$22.00
- A20-T (Target). 30-35-40-45-50 spine weight. 6-pak.....\$16.00
- A20-B (Broadhead adapter). 40-45-50-55-60 spine weight. 6-pak...\$17.00
- A20-NP (no point). 25-30-35-40-45-50-55-60 spine weight. 6-pak...\$17.00

*@Owens-Corning Fiberglas Corp.
 Accessory items for No. A20 and No. A27 arrows can be found on page 20. Broadhead adapters (No. M20-B), target points (M20-T) and Nock-Serts (M-20-N) should be ordered by spine weight.

Professional Grade

For those who want the *ultimate* in arrows, Shakespeare presents the *Professional Grade* 'RIFLED' arrow. Guaranteed perfectly straight and uniform, with *exact* match in size, weight and spine. Each individual arrow is marked with its spine weight. All are elegantly crested and precision-fletched. All arrows with points in this new series are for 28" draw. Six exactly matched arrows, skin-packed, per 6-pak. Specify spine weight and catalog number.

- A27-B (Broadhead adapter). 40-45-50-55-60 spine weight. 6-pak...\$21.00
- A27-T (Target). 30-35-40-45-50 spine weight. 6-pak.....\$20.00
- A27-NP† (No point). 25-30-35-40-45-50-55-60 spine weight. 6-pak...\$16.00

†Target points included with all A27-NP & A20-NP arrows up to 40 pounds. Broadhead adapters included above 40 pounds.



Close-up View: Patented Spiral Markings on New Shakespeare "RIFLED" Fiberglas* Arrows

POPULAR ARROW POINTS

Shown here are the most popular types of arrow points used in the line of Shakespeare arrows for every type of archery shooting activity.



— 2: Two-Blade Broadhead



— 3: Three-Blade Broadhead



— 4: Four-Blade Broadhead

SHAKESPEARE CEDAR 6 PAK ARROWS

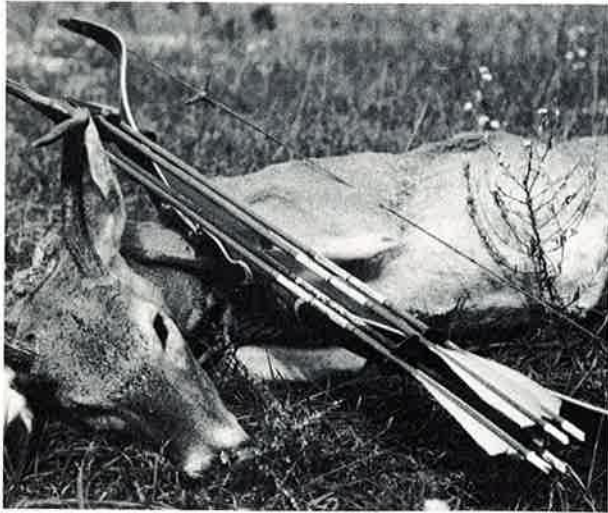
All Shakespeare No. A20, No. A27, No. A50 and No. A2 arrow series are packaged in an attractive half dozen arrow display package, covered with bi-lateral, resilient shrink film. Pilfer-proof and dust free!

No. A50 Shakespeare "MATCHED" ARROWS—Prime quality 1½-inch Port Orford cedar, carefully and accurately matched in spine and grain weight. Beautiful spray cresting with precision fletching. Specify catalog No., arrow type and draw weight when ordering. All arrows (T-F-3-4) in this series come in 28" length only. Target point arrows have 3½" fletch; all other arrows (2, 3, 4 blade broadheads and NP, F) come with 5" fletch.

A50-T (Target) 30-35-40-45-50-55-60 In 6-pak. Each.....	\$ 8.50
A50-F (Field) 40-45-50-55-60 In 6-pak. Each.....	\$ 8.50
A50-NP (No point, 30") 35-40-45-50-55-60 In 6-pak. Each.....	\$ 8.50
A50-2 (Broadhead) 40-45-50-55-60 In 6-pak. Each.....	\$12.50
A50-3 (Broadhead) 40-45-50-55-60 In 6-pak. Each.....	\$12.50
A50-4 (Broadhead) 40-45-50-55-60 In 6-pak. Each.....	\$12.50

No. A2 — SIX PAK ARROWS — 28" arrows mounted on display card and skin packaged to protect arrows; full painted 1½-inch shafts with contrasting spray crest, and 3" feathers.

No. A2 — 28" Target arrows, 6-pak.....	\$5.00
No. A2 — 26" Target arrows, 6-pak.....	\$5.00
No. A2 — 24" Target arrows, 6-pak.....	\$5.00



Illustrated: Six-Pak used in No. A20, No. A27, No. A50 and No. A2 arrow series.



— 2: 2 Blade
D308-2



— F: Field Point



— T: Target Point

SHAKESPEARE ARROWS IN BULK DISPLAY PACKS FULL AND HALF GROSS

A80 Series, select Port Orford cedar arrows, full painted, $1\frac{1}{32}$ inch shafts.

A90 Series, low cost cedar arrows, full painted, $1\frac{1}{32}$ inch shafts.

No. A80 ARROWS — These Shakespeare arrows are made of select Port Orford cedar, full painted and spray crested, with quality fletching. Available in half gross pak only. Pak has individual holes. Available in 28" length only. All arrows have $1\frac{1}{32}$ inch shafts. Target arrows come with 3" fletch; field arrows with 5" fletch.

A80-T (Target) $\frac{1}{2}$ gross pack only.....\$55.00

A80-F (Field) $\frac{1}{2}$ gross pack only.....\$60.00

No. A70C-4X HUNTING ARROWS — Select Port Orford $1\frac{1}{32}$ inch cedar arrows that are full painted with camouflage design and decorations in color. 4 blade broadhead point comes in 28" length only. $\frac{1}{2}$ gross pack contains all 40 to 50 lb. spine weight arrows. $\frac{1}{2}$ gross pack.....\$120.00

No. A90 ARROWS — This is a good, inexpensive practice arrow. With full painted shaft, and contrasting spray crest. Knurled points. Recommended for schools and recreational programs. Available in gross lot package only. $\frac{5}{16}$ " shafts in 24" length arrows has 2" fletch. 26" arrow has $1\frac{1}{32}$ " shaft with 2" fletch; 28" arrow has $1\frac{1}{32}$ " shaft with 3" fletch.

A90-T-24" (Target) all 24" arrows. Per gross pak.....\$60.00

A90-T-26" (Target) all 26" arrows. Per gross pak.....\$60.00

A90-T-28" (Target) all 28" arrows. Per gross pak.....\$60.00

A90-F (Field) all 28" arrows. Per gross pak.....\$80.00

A90-TX (Target) Assortment: (1-doz. 24") (3-doz. 26") (8-doz. 28").

Per gross pak.....\$60.00

A90-FX (Field) Assortment: (1-doz. 24") (3-doz. 26") (8-doz. 28").

Per gross pak.....\$80.00

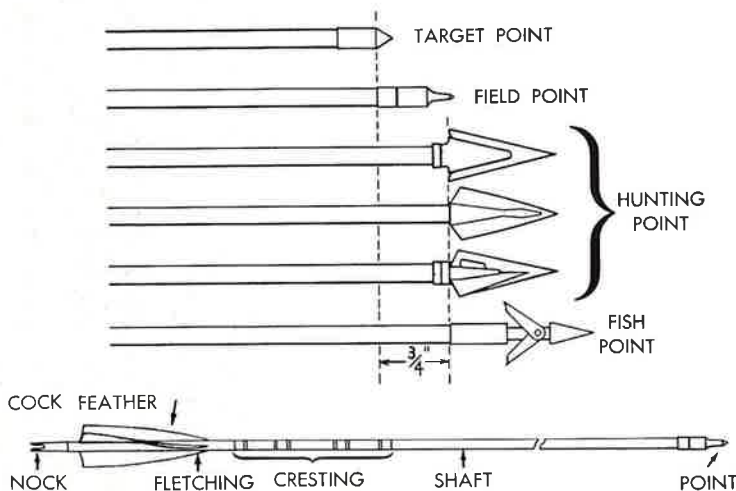
No. A1 — FOUR PAK ARROWS — 28" arrows, mounted on pilfer- and dustproof peg board display card. Arrows are full painted $1\frac{1}{32}$ " shafts with contrasting spray crest and 3" feathers.

Dealer minimum: 1-dozen No. A1 paks.

No. A1 (4-arrows on card) Per pak.....Each \$2.50

No. A1-H (4-arrows) 3 blade, 40/49, or 50/60 spine weights available. 5" feathers. Per pak.....Each \$7.50

CHOOSING ARROWS—Although the 28" arrow length is an average for adults, requirements for needed arrow length can be gauged by holding a yardstick between your outstretched finger tips with the end of the yardstick touching the middle of the chest. Add $\frac{1}{4}$ -inch to the length shown on the yardstick for proper arrow length.





No. AD5 — Laminated bow display with a selected Shakespeare merchandising assortment. Display is made of wood and metal, and painted and silk screened. *Dealers, write for details.*

ARCHERY TACKLE DEALER-DISPLAYED

No. AD-5 "BIG BUCK" PROMOTION PACKAGE —

Here's a package archery deal, designed to put big bucks in your cash register, that is a real "Smasheroo"! You get this valuable, functional floor display with an assortment of only seven Shakespeare ad-featured laminated bows. The No. X24-35# @ \$30.00 in the package is FREE, so that when you sell the \$30.00 bow, it pays for the spectacular "Big Buck" merchandiser display @ \$25.00. The display is permanent, easy to put up; it is made of wood and metal, and attractively screened in three colors. Here's the deal:

1-ea. X17 - 45#	1-ea. X25 - 40# Trident
1-ea. X26 - 40# Necedah	1-ea. X22 - 45#
1-ea. X26 - 45# Necedah	1-ea. X24 - 35#
1-ea. X26 - 50# Necedah	1-ea. display

The FREE bow pays for the permanent Display Merchandiser which is your store fixture now to cash in on Shakespeare's "Big Buck" promotion over and over again.

**Year Round Dating program applies*

No. AD8 — CARDED ACCESSORY DISPLAY — Merchandiser holds 1-dozen cards, Shakespeare bow strings or accessories. (See next page). Sent no-charge when specified with any dozen cards.

No. AD7 — CARDED ACCESSORY DISPLAY ASSORTMENT

Dealers, write for details.

For details on 1-dozen card assortment and free display, see page 20.



No. AD8 — Carded Accessory Display

Shakespeare

ARCHERY ACCESSORIES

No. AD-8 CARDED ACCESSORY DISPLAY

Here's the neatest, most compact little counter display (or can be used on peg board, too) that takes only 10 x 14 inches of valuable store space. Presents a complete selection of strings or archery accessories for easy point-of-sale merchandising. It's practically a miniature archery accessories department all by itself. Contains items most frequently wanted by the archer. Display, made of wire and metal, comes FREE with the carded archery merchandise assortments listed below, or with any 12 cards of archery accessories or bow strings when requested.

No. AD-7 ASSORTMENT — Contains: 1 card M94-5/16" nocks; 1 card M94-1 1/32" nocks; 1 card M96-T-5/16" target points; 1 card M95M-1 1/32" field points; 1 card M98 feathers; 1 card M10 String-Ease Bow Stringers; 1 card M6 feather rests; 1 card S75C Bow Strings (hemp); 1 card S72C all Purpose bow Strings; 1 card S71C-55" stranded bow strings; 1 card S71-56" stranded bow strings; 1 card S71-58" stranded bow strings; included with the above listed merchandise is one each FREE No. AD-8 counter display. Complete No. AD-7 Assortment **\$171.60**



BOW STRINGS

Exclusive Double Loop String. This one string will fit almost any bow from 48" to 69" in length, and up to 60 pounds in draw weight. Minimize bow string stocking problems with this adjustable string. Made of braided Dacron with hard finish cotton center, mylar end loop. S72. Each..... **\$2.00**

S72C. CARD. 1-dozen No. S72 strings. **\$24.00**

No. S71. Tournament grade double loop of hot stretched stranded Dacron; internally lubricated; with quality center serving end loops. Specify length of bow which string is being ordered for, with weight desired.

- S71-50" S71-62" (35/44) (45/64)
- S71-54" (35/44) (45/64) S71-63" (35/44) (45/64)
- S71-55" (35/44) (45/64) S71-64" (35/44) (45/64)
- S71-56" (35/44) (45/64) S71-66" (35/44) (45/64)
- S71-58" (35/44) (45/64) S71-68" (35/44)
- S71-60" (35/44) (45/64) S71-69" (35/44)
- S71-72" (Single loop)

No. S71 String. Each..... **\$1.50**

CARDED STRING ASSORTMENTS

- S71C-50"** Card, 1-dozen strings, Assorted 6-strand. Each **\$18.00**
- S71C-54"** Card, 1-dozen, (8 strings 35/44, 4 strings 45/64) Each **18.00**
- S71C-55"** Card, 1-dozen, (4 strings 35/44, 8 strings 45/64) Each **18.00**
- S71C-56"** Card, 1-dozen, (10 strings 35/44, 2 strings 45/64) Each **18.00**
- S71C-58"** Card, 1-dozen, (6 strings 35/44, 6 strings 45/64) Each **18.00**
- S71C-60"** Card, 1-dozen, (8 strings 35/44, 4 strings 45/65) Each **18.00**
- S71C-62"** Card, 1-dozen, (6 strings 35/44, 6 strings 45/64) Each **18.00**
- S71C-63"** Card, 1-dozen, (6 strings 35/44, 6 strings 45/64) Each **18.00**
- S71C-64"** Card, 1-dozen, (6 strings 35/44, 6 strings 45/64) Each **18.00**
- S71C-66"** Card, 1-dozen, (8 strings 35/44, 4 strings 45/64) Each **18.00**
- S71C-68"** Card, 1-dozen, (12 strings 35/44) Each... **18.00**
- S71C-69"** Card, 1-dozen, (12 strings 35/44) Each... **18.00**
- S71C-72"** Card, 1-dozen, (12 strings 35/44) (Single loop) Each **18.00**
- S72C** Card, 1-dozen all purpose strings, assort. to 60 lbs. Each **24.00**
- S75C** Card, 1-dozen strings, 72" (Single loop) Each **7.20**

No. S75 String — 72". Economy single loop bow string of good quality hemp. For bows to 40 lbs. Each..... **\$.60**

S75C Card, 1-dozen strings..... **\$7.20**



S72



S71



S75

CARDED ARROW POINTS AND HEADS



M95-F FIELD POINTS — Specify 5/16" or 1 1/32". 12 ea. 1-dozen paks, card..... **\$12.00**



M96-T TARGET POINTS—Specify 5/16" or 1 1/32". 1-dozen paks, card **\$12.00**



M88 HARPOON POINTS—1-dozen on card..... **\$24.00**



D308-4 RAZORHEAD — 4-blade, 1-dozen pak **\$10.00**

D308-2 RAZORHEAD — 2-blade, 1-dozen pak **\$ 7.50**



M80 RAZORHEAD INSERTS — 1-dozen **\$ 2.50**



M3 BROADHEAD—3-blade head, 1-dozen pak **\$7.00**



M4 BROADHEAD—4-blade head, 1-dozen pak **\$7.00**



M2 BROADHEAD—2-blade head, 1-dozen pak **\$5.00**



M20B BROADHEAD ADAPTERS — For glass arrows, 1-dozen. Specify spine weight. 40-60 **\$3.50**

M20T TARGET POINT—For glass arrows, 1-dozen. Specify spine weight: 25 & 30-35-40 to 60 **\$2.00**

M20N NOCK-SERT (not illustrated). For glass arrows. Specify spine weight of shaft. 1-dozen. 25 & 30-35-40 to 60... **\$12.00**



Shakespeare

BOW FISHING EQUIPMENT

A complete line of precision-built tackle for every need.



ARROWS

No. A30 GIG ARROW — 30" shaft of glass, rubber fletched, with 4-prong gig. Each.....\$4.50

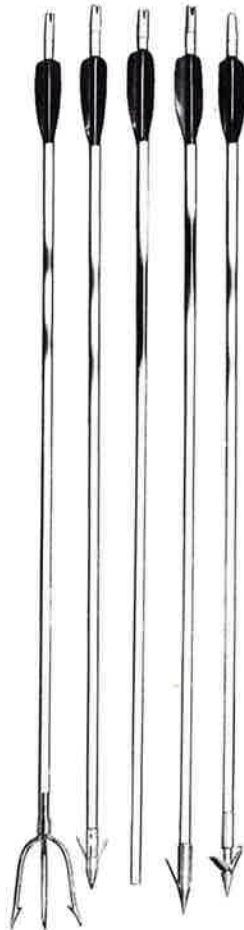
No. A31 BARB ARROW — 30" shaft of glass, rubber fletched, with wire barbs, steel point. Each.....\$3.00

No. A32 NO POINT ARROW — 30" glass, rubber fletching installed. Each.....\$2.25

No. A33 SWIVEL POINT ARROW — 30" glass, rubber fletched with steel point. Each.....\$4.00

No. A35 HARPOON ARROW — 30" glass, rubber fletched with harpoon point. Each.....\$4.00

A30 A31 A32 A33 A35



D250 BOW REEL — Plastic, tape-on type; comes with 50' of 70 lb. line. Each...\$2.50



M89 BOW FISHING LINE — 6 spools in carton. 50 feet per spool. 70 lb. Per carton.....\$6.00



POINTS FOR FISHING ARROWS



No. FP30 — Gig point for No. A30 arrow above. Each.....\$2.50

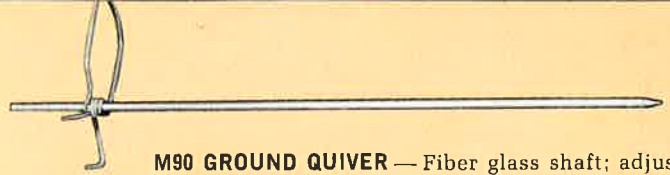


No. D36 — Hinged point replacement for No. A35 arrow. Each.....\$1.75



No. D37 — Ferrule for No. D36 point. Each.....\$0.50

No. D39 POINT — Replacement point for No. A31 arrow above. Each.\$0.75



M90 GROUND QUIVER — Fiber glass shaft; adjustable wire holder. Each.....\$2.00



M92 CLIP-ON QUIVER — Hold 4 arrows; fits all bows. Composition rubber. Each.....\$4.50



D341 BOW NOCKS — Made of nylon, glue on type. Used with glass bows. Per pair.....\$1.00



M94 ARROW NOCKS — Specify 5/16" or 11/32". Comes with twelve each 1-dozen packs on card. Assorted colors. Per card.....\$7.20



M98 FEATHERS — Carded, 6 1-dozen packs grey barred; 6 1-dozen packs dyed barred, 5" 1-dozen per card. \$15.00



M6 FEATHER REST — Carded, vertical feather rest. Each in box. 2-dozen per card.....\$18.00



M7 REST-N-PLATE — Carded, arrow plates. Ea. in box 1-doz. per card. \$27.00



M8 ARROW PLATE — Carded, calf hair plate. 2-dozen per card.....\$6.00

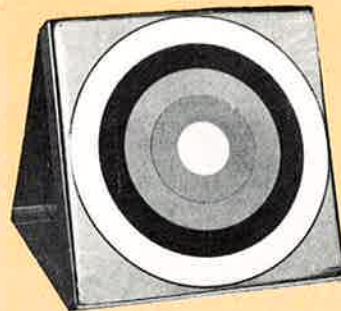


\$1.25 ea.

NEW STRING-EASE

No. M10 Shakespeare String-Ease — New bow stringer fits around the instep to make a perfect stirrup when stringing the bow. Keeps bow in position for perfect string alignment... without limb twist. Bow stays off ground at all times. No. M10 String-Ease comes packed 1-dozen on a card.....\$15.00

TW24



TE300



TARGETS

TW24 WONDER TARGET — Target, mat and stand easy to carry and set up — no mess — weighs only 10 lbs. Forms easel stand. Handles arrows from bows up to 60 lbs. Size 25" x 25" x 3 1/2". Ideal for school use, back yard shooting. Each.....\$15.00

TE300 BOX TARGET — Corrugated, 4-color target both sides. Stuff with straw, newspaper, etc. Minimum pack: 6-shipped flat. Ea...\$1.00

- FT16 TARGET FACE. 16" 4-color, each.....\$.20
- FT24 TARGET FACE. 24" 4-color, each.....\$.75
- FT36 TARGET FACE. 36" 4-color, each.....\$ 1.50
- FT48 TARGET FACE. 48" 4-color, each.....\$ 2.00



Shakespeare

QUALITY LEATHER GOODS

This Shakespeare line of quivers, gloves, tabs and guards is unsurpassed for quality and value. There's the *right* leather item here to fit any particular archer need.

QUIVERS

L69 — DELUXE BACK QUIVER — Soft, Elk tanned moccasin leather. Back quiver, full zipper pouch, knife, pencil and file pockets. Also has handy accessory straps and features the new "no struggle" harness that slips over the arm instead of over the head. Ea. . . . \$17.50

L67 — BACK QUIVER — Two-tone; holds plenty of arrows and has full zipper pouch. Made of top grain cowhide to last. Ea. . . . \$12.00

L66 — DELUXE SIDE QUIVER — Soft, Elk tanned moccasin leather tournament type side quiver. Has full zipper pouch, pencil pocket, cigarette pack holder and score card clip. Belt clip and adjustable snap straps. Each. . . . \$10.00

L65 — NEW "quick-draw" QUIVER — Top grain leather holds arrows conveniently at archer's side. Fits on belt; full zipper pouch, pencil holder, score clip, and handy "Tie-down" thongs. Holds up to 12 arrows; arrow divider. Each. . . . \$10.00

D200 — BACK QUIVER — An economically priced back quiver of leatherette, trimmed with fringed cowhide; knife sheath, and "Indian beaded"; holds 12 arrows. Each. . . . \$7.00

D202 — BACK QUIVER — Leatherette, just right for the neophyte archer. Western style with knife pocket and divider to form three arrow compartments. Each. . . . \$5.00

D214 — BACK QUIVER — 18" Economy model; leatherette back strap and yolk. Each. . . . \$4.00

L59 — SIDE QUIVER — Outstanding 18" leatherette with belt clip; easily holds 12 arrows. Each. . . . \$2.50

L56 — SIDE QUIVER — 16" leatherette, holds 12 arrows. Belt clip for easy removal. Each. . . . \$1.75

L56R — SIDE QUIVER — 16", red leatherette; holds 12 arrows. Belt clip. Each. . . . \$1.75



L69



L67



L66



L65



D200



D202



D214



L59



L56R



L56



L40



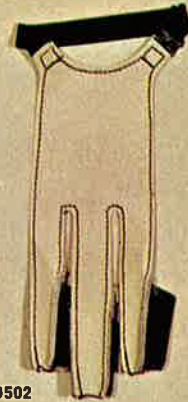
D503



L52



D504



D502



L38



L46

GLOVES AND FINGER TABS

D503 — Deluxe Glove, Closed ends. Top cowhide, adjustable elastic strap. XL, Lg, Med., and Sm. sizes. Each.....\$2.25

L52 — Single Seam Glove — Made of soft cowhide; needs no breaking in. Very popular with bowhunters and archery classes. Elastic "snug fit" adjustable wrist strap. Available in XL, Lg., Med., and Sm. sizes. Each.....\$2.25

D504 — Tapered Glove — Brown top grain leather; has tapered finger ends. Adjustable elastic wrist strap. In XL, Lg., Med., and Sm. sizes. Each.....\$2.00

D502 — Economy Glove — Narrow end, of real leather 2-tone styling, elastic wrist strap, in Lg., Med., and Sm. sizes. Each.....\$1.50

L38 — Cordovan Tab — A Marshall style backed cordovan tab; adjustable elastic strap for the finger. Ideal for the bowhunter, as it can be used over a pair of warm gloves. Popular with the competitive archers. Each.....\$1.50

L46 — Economy Tab — Double thickness, top grain cowhide — Marshall style tab with slick surface. Available in Lg., Med., and Sm. Each. \$.50

ARM GUARDS

D222 — Hunter Armguard — Three straps, with elastic bands for easy adjustment; two steel support bands. Each.....\$3.00

D223 — Wide Armguard — Most popular; steel support band; two adjustable elastic straps. Each.....\$2.50

L42 — Tournament Armguard — Especially designed for the competitive archer; light and narrow; two straps with steel band.....\$2.50

L41 — Economy Armguard — Good quality, two elastic straps and a steel support band. Ideal for the classes or beginning archer. Each. \$1.30

BOW CASES

L39 — New! Padded bow case for hunting bows. Will hold bows to 62", one bow braced or three unbraced bows. Exclusive extra large pocket to hold quiver full of arrows and other accessories. Ideal for travel. Each.....\$15.00

L37 — Deluxe Padded Bow Case — Will hold any bow to 69". Features a full zipper accessory pocket. Each.....\$15.00

L40 — Cloth Bow Case — Soft cloth trimmed bow case, fits any bow to 69"; leather reinforced end. Each.....\$2.00



D222



D223



L42



L41



L39



L37

GUARANTEE

Every Shakespeare laminated WONDER BOW is serial-numbered and accompanied by an owner's registration card which must be filled out and mailed by the original owner within 10 days after date of purchase. Should there be performance failure of an owner-registered WONDER BOW during a period of 6 months after date of purchase, the Shakespeare Company will make no-charge replacement and/or repair for the original owner unless said registered WONDER BOW shows evidence of flagrant misuse or improper handling. After the first six months of the ownership term, and provided the bow has been given reasonable care, any defective WONDER BOW will be replaced on a list price exchange basis as indicated on the guarantee card.

Shakespeare solid fiber glass bows are also fully guaranteed against manufacturing or material defects.

Should a failure occur on any Shakespeare bow, owner must write to Shakespeare Company for authorization to return the bow for inspection.

DEALERS ARE NOT AUTHORIZED TO MAKE REPLACEMENTS.

Address all correspondence to:

Shakespeare Company
Archery Division
R. R. 5, Box 13
Kalamazoo, Michigan 49001

Specifications as given here were in effect at the time this catalog was printed. The right is reserved to change specifications, discontinue models, change prices, without giving notice or incurring obligation.

Prices quoted are list prices, F.O.B. Kalamazoo, Michigan and are effective January 1, 1967.

Printed in U.S.A.



ARCHERY QUESTIONS ANSWERED

by Dick Wilson
Shakespeare Archery Division

"Dear Sir: I want to get into archery, but I don't know" . . .
Thousands of letters a year are received by archery manufacturers from people interested in starting in archery or enlarging their archery activities. Perhaps we can clarify some questions in your mind by answering the "most often asked" questions here. However, most answers are general, and we suggest you contact your local professional for individual advice.

Question: "How do I measure the brace height?"

Answer: Measure the distance from the pivot point to the string with the bow strung. See the illustrations of a bow below.

Question: "What is the proper brace height for my bow?"

Answer: Check with the manufacturer's catalog. In most cases the brace height (or fistmele) will be listed. Remember, brace height will vary with the individual bow and the archers shooting style, so the manufacturer can only give the average brace height. Twist the string (in the same direction it is already twisted) to raise the brace height. Try several heights to find which one works best with your bow.

Question: "How do I tell what length and weight string to buy for my bow?"

Answer: This is probably the most perplexing problem to the beginning archer. Most bows have the length and weight of the bow marked on the face or side below the grip. When buying a string, use this information. As an example, if your bow is a 40# Ocala, buy an S71-62" 35/44 — a 62" string in the 35 to 44 lb. weight. Some strings are marked by actual string length. Generally strings are 3/4" shorter than the marked length of the bow.

Question: "I draw a 26" arrow. My bow is marked 45#. What is my bow weight at my draw?"

Answer: Marked bow weights are measured at a 28" draw from the pivot point unless specified otherwise. Bow weights increase or decrease approximately 1/2 to 2 lbs. per inch of draw above or below 28". Therefore, the above bow would be approximately 41# at the 26" draw.

Question: "The limb of my bow seems crooked and the string does not line up in the groove. What is the matter?"

Answer: Your bow probably has a twisted limb. Most manufacturers inspect their bows very carefully and do not sell bows with twisted limbs. However, due to the construction of a laminated bow, the limbs can be twisted very easily by improper stringing. Illustrated below are two methods of stringing a bow. The "step-thru" method is the safest way but be

sure to use our new "String-Ease" bow stringer. Without the "String-Ease" there is a good chance of twisting a limb. If you do twist a limb, most manufacturers will repair the bow for a nominal charge.

Question: "My arrows don't fly straight out of my bow. Some shoot left and some to the right. What is the matter?"

Answer: Probably your arrows are not spined (matched) to your bow weight. For the ultimate in accuracy, your arrows' spine weight must be within 5 to 10 lbs. of the draw weight of your bow. In other words, if you have a 40 lb. bow, you should buy arrows that are marked either 40/44 or 40/49. The spine of an arrow refers to the amount of deflection (or bend) of the shaft. An arrow bends when you release the bow string due to the sudden thrust. It follows that if one arrow is weaker than another, shot out of the same bow it will bend more. Matched arrows mean the arrows all bend the same and are matched for a bow of the weight given on the arrow box.

Question: "What length arrow should I use?"

Answer: This depends on the individual's shooting style and is determined by the anchor point. See the chart for the method of determining approximate draw length. Remember, never shoot an arrow that is too short!

Question: "What weight bow should I buy?"

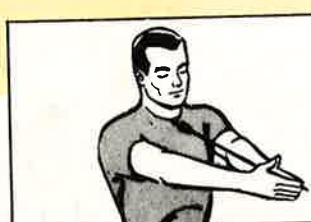
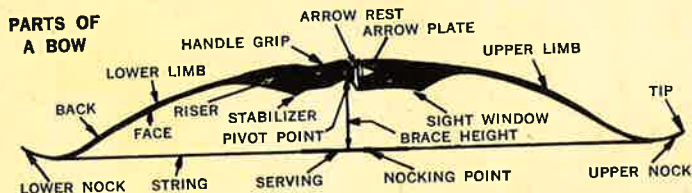
Answer: This is the most difficult question in archery to answer. There are many factors that should be considered in choosing a bow weight, and it would be impossible to go into all of them here. However, here are some general guide lines. First, archery is a test of skill, not strength. **DO NOT OVER-BOW!** Archery is a recreational activity and is supposed to be fun. You can not have fun if you can't hit the target or if you have to struggle just to pull the string back. So, for recreational shooting (back yard, camp, school, etc.) use a bow weight that you can hold for 20 seconds without excessive shaking: 20-25 lbs. at 28" for women, 25-35 lbs. for men and 15-20 lbs. for children is the general rule. For hunting, use as heavy a weight bow as you can shoot accurately. Accuracy is much more important than weight in bow hunting, but heavier weights increase your chances of downing game more quickly and efficiently. Generally, 30-40 lbs. for teens and women and 40 lbs. and up for men. The average hunting weight is 45 lbs., but be sure to check your local game laws for weight minimums.

Question: "Where can I find out about local archery organizations?"

Answer: Any questions pertaining to archery in general and archery organizations can be answered by writing to the American Archery Council, 100 East Ohio Street, Chicago, Illinois. This is the "Voice of Archery" for all organized archery and archery manufacturers.

Question: "How and where do I put on a nocking point?"

Answer: A nocking point is a very essential part of shooting a bow, as it assures that the arrow will be placed on the string at the same spot every shot. There are commercial nocking points on the market, but a few winds of dental floss will suffice for a temporary nocking point. This point is generally 1/2 of an inch above 90 degrees from the arrow shelf.



For proper length, arrow should reach from chest to extended fingertips.

STRINGING THE BOW

PUSH-PULL METHOD

STEP-THROUGH METHOD

