

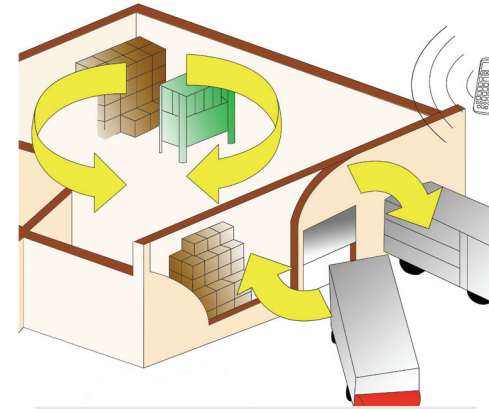
IntelliTrack Plug In for QuickBooks™

Overview

Harness the power, the benefits and the features of two great software IntelliTrack's ISRP/WMS and Intuit's QuickBooks. The IntelliTrack Plug In for QuickBooks (QB) is the application specific plug in to the IntelliTrack API (Application program interface). The API is a series of objects that enable a user to quickly retrieve data from and enter data into WMS or ISRP. The seamless plug in provides the bilateral information highway for applications. The features and functions include:

- Timer settings for "behind the scene" real-time transfers.
- User selected manual transfer(s).
- Retrieves QuickBooks Purchase Orders and enters them into WMS or ISRP as Receiving Orders.
- When the receiving orders are received and closed in WMS or ISRP, a new Item Receipt is created in QuickBooks.
- When the receiving orders are received, the purchase order is closed in QuickBooks.
- Retrieves QuickBooks Sales Orders and puts them into WMS or ISRP as Picking Orders.
- When the orders are picked and closed in WMS or ISRP, a new invoice is created in QuickBooks.
- When the orders are picked, the Sales order is closed in QuickBooks.
- Customers and Vendors are brought into WMS or ISRP.
- Item numbers are retrieved from QuickBooks and entered into WMS or ISRP.
- Optionally, inventory can be imported from QuickBooks into WMS or ISRP.

To set in motion the complete inventory control, items in QuickBooks that require handling must be set to "Inventory Part."



Program Requirements

Software

- WMS 6.2 or ISRP 6.2
- WMS Event Service
- QuickBooks Plug-In

Server

- Processor
 - 1 GHz Minimum
 - 1.8 GHz recommended
- RAM
 - 256 MB Minimum
 - 512 MB or greater recommended
- Available Hard Disk
 - 200 MB
- Operating System
 - Windows® 2000 SP4
 - Windows® Server 2003

Client Workstation

- Processor
 - 800 MHz Minimum
 - 1 GHz recommended
- RAM
 - 256 MB Minimum
 - 512 MB or greater recommended
- Available Hard Disk
 - 300 MB
- Operating System
 - Windows® XP SP1
 - Windows® 2000 SP4

For more information please contact your local reseller

or visit our website at www.intellitrack.net



IntelliTrack Plug In for QuickBooks™

IntelliTrack Inventory, Shipping, Recieving, Picking (ISRP) and WMS

will extend the benefits of QuickBooks inventory and provides its user true inventory and control management. WMS/ISRP is designed to maintain inventory in a variety of business environments. This user friendly inventory tracking system combines state-of-the-art barcode data collection on your portable barcode terminal, with a sophisticated Windows based management program for your PC. The IntelliTrack suite of products offers a relational database to insure data integrity, portable barcode reader integration to maximize data collection efficiency, and barcode labeling printing capabilities to improve data collection and accuracy.

Currently supported versions of QuickBooks include:

- QuickBooks Premier
- QuickBooks Enterprise
- QuickBooks Premier and Enterprise Industry Specific Versions
 - Contractor Edition
 - Manufacturing Edition
 - Manufacturing and Wholesale Edition

Available in 3 Versions:

ISRP

- Paperless Receiving
- Serial Numbers
- Multiple UOM & Let Downs
- Inquiries
- Move/Transfers
- Physical Inventory
- Cycle Counting
- Kitting

WMS RF Standard

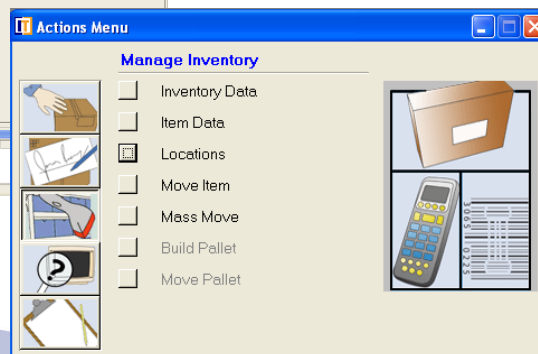
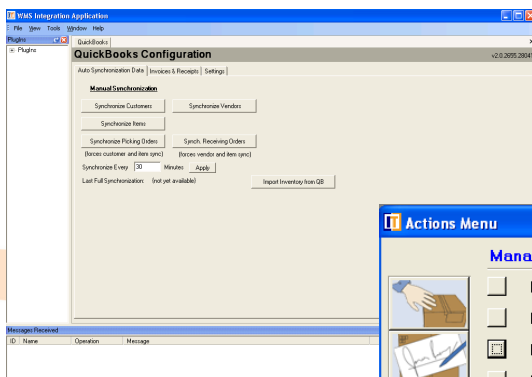
(includes Standard Batch features)

- Terminal Messaging
- RF Portable Application

WMS RF Professional

(includes Standard Batch & RF features)

- Directed Pick & Put Away
- Pallet Tracking
- Basic Cubing
- Replenishment



Intellitrack WMS/ISRP-Matrix	ISRP	RF Standard	RF Professional
Feature/Product			
Batch portable data collection terminal Application	●	●	●
Cycle Counting	●	●	●
Inquiries	●	●	●
Inventory Moves & Transfers	●	●	●
Multiple Units of Measure	●	●	●
Paperless Picking & Receiving	●	●	●
Physical Inventory	●	●	●
SQL Server Capable	●	●	●
Serial Numbers	●	●	●
Source Code (optional)	●	●	●
Supports Plug-Ins through WIA	●	●	●
Integrates with QuickBooks	●	●	●
Staging	●	●	●
Portable data collection terminal Bar Code printing	●	●	●
Terminal Messaging	●	●	●
RF (WiFi) portable data collection terminal Application	●	●	●
Cross Docking	●	●	●
Cubing (Space Management)	●	●	●
Directed Pick & Put away	●	●	●
Kitting	●	●	●
Pallet Tracking	●	●	●
Replenishment	●	●	●
Wave Picking (Batched Orders)	●	●	●

For more information please contact your local reseller

or visit our website at www.intellitrack.net