

ATX GRIP PANTHER FOXY CRANE SPECS

Foxy crane can be built up with 4 front sections and one rear, making a max length of 8m, 2 meters per section.

Max

Panther Foxy Crane

Foxy Base with pneumatic tyres

Foxy Pyramid

Foxy Central Pivot Section

Foxy Outrigger 1

Foxy Outrigger 2

Foxy Outrigger 4

Foxy End Section

Jib configuration weight rod

Platform

Foxy Remote Head Mount plus moy 3-point leveller

Counter Weight Bucket 30

Bracing kit for version 2-4

Panther Weight Trolley X3 (10 per trolley)



Foxy Crane System:

Panther GmbH, Raffelersallee 3, 82041 Oberhaching, Germany
Tel: +49-89-613900-01, Fax: +49-89-6131000, www.panther.lv

Quick Information

Please look into operating manual for further information!

Schnellinformation

Bitte beachten Sie die Betriebsanleitung für weitere Informationen!

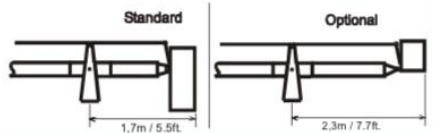
Parts:

Einzelteile:

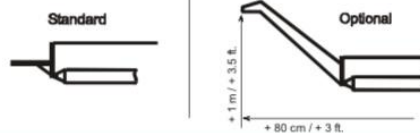
Code/Nr.	Description/Beschreibung	
127753 142130	Foxy base Baby base	
127845 142109	Pyramid Baby Pyramid	
131301	Pyramid extension Pyramidenverlängerung	
126896	Central Pivot Section Mittelteil	
126898	Outrigger 1 Ausleger 1	
126897	Outrigger 2 Ausleger 2	
129180	Outrigger 3 Ausleger 3	
136768	Half outrigger Halber Ausleger	
136770	End section Endstück	

Code/Nr.	Description/Beschreibung	
122410	Platform holder Plattformhalter	
127066	Remote Head Mount Foxy Remote Galgen Foxy	
137011	High Rig Hochausleger	
129187	Counter weight Bucket, large (30) Gewichtskorb, groß (30)	
127098	Counter weight Bucket (18) Gewichtskorb (18)	
133529	Additional counter weight Bucket (8) Zusatzkorb (8)	
136643	Bracing kit (version 2-4) Abspannung (Version 2-4)	
136649	Bracing rod extension (version 5) Abspannungsverlängerung (Version 5)	

Rear side / Hintere Seite:



Front side (remote only) / Vordere Seite (nur Remote):

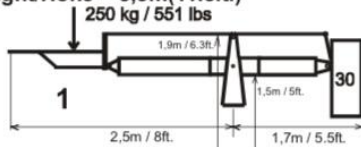


Platform Versions:

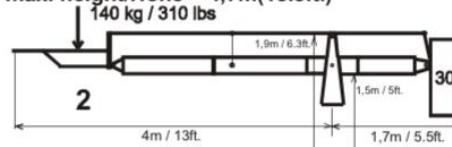
Note: Deduct 30cm(1ft.)from max. height if used without pyramid extension.

Hinweis: Die max. Höhe reduziert sich um 30cm, wenn die Pyramidenverlängerung nicht benutzt wird.

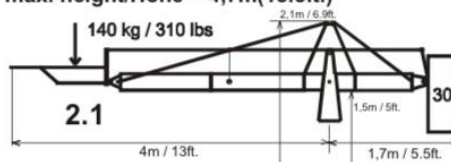
max. height/Höhe = 3,5m(11.5ft.)



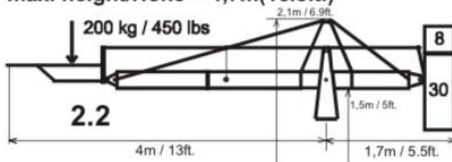
max. height/Höhe = 4,7m(15.5ft.)



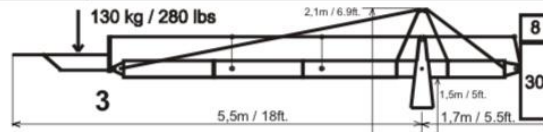
max. height/Höhe = 4,7m(15.5ft.)



max. height/Höhe = 4,7m(15.5ft.)



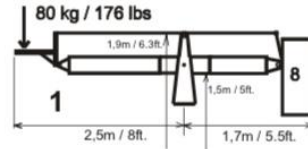
max. height/Höhe = 6,1m(20ft.)



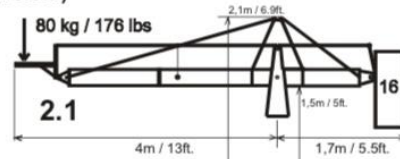
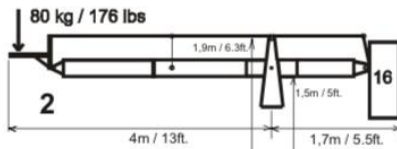
Remote Versions:

Note: Deduct 30cm(1ft.)from max. height if used without pyramid extension.
 Hinweis: Die max. Höhe reduziert sich um 30cm, wenn die Pyramidenverlängerung nicht benutzt wird.

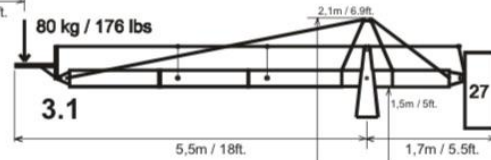
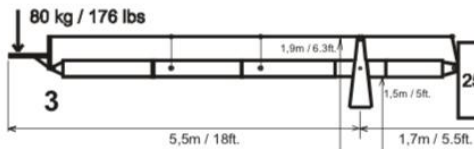
max. height/Höhe = 3,5m(11.5ft.)



max. height/Höhe = 4,7m(15.5ft.)



max. height/Höhe = 6,1m(20ft.)



max. height/Höhe = 7,3m(24ft.)

