

THE SPACE YOU NEED.
AT A PRICE THAT WORKS
FOR YOU.

900 MIDDLESEX TURNPIKE

BILLERICA | MA



±94,000 SF

Class B Manufacturing, Flex, R&D,
& Office Space

Equitable
REAL ESTATE SOLUTIONS

75 Federal Street - Suite 1115
Boston, MA 02116
617-728-4400

Equitable
REAL ESTATE SOLUTIONS

INTRODUCING 900 MIDDLESEX TURNPIKE

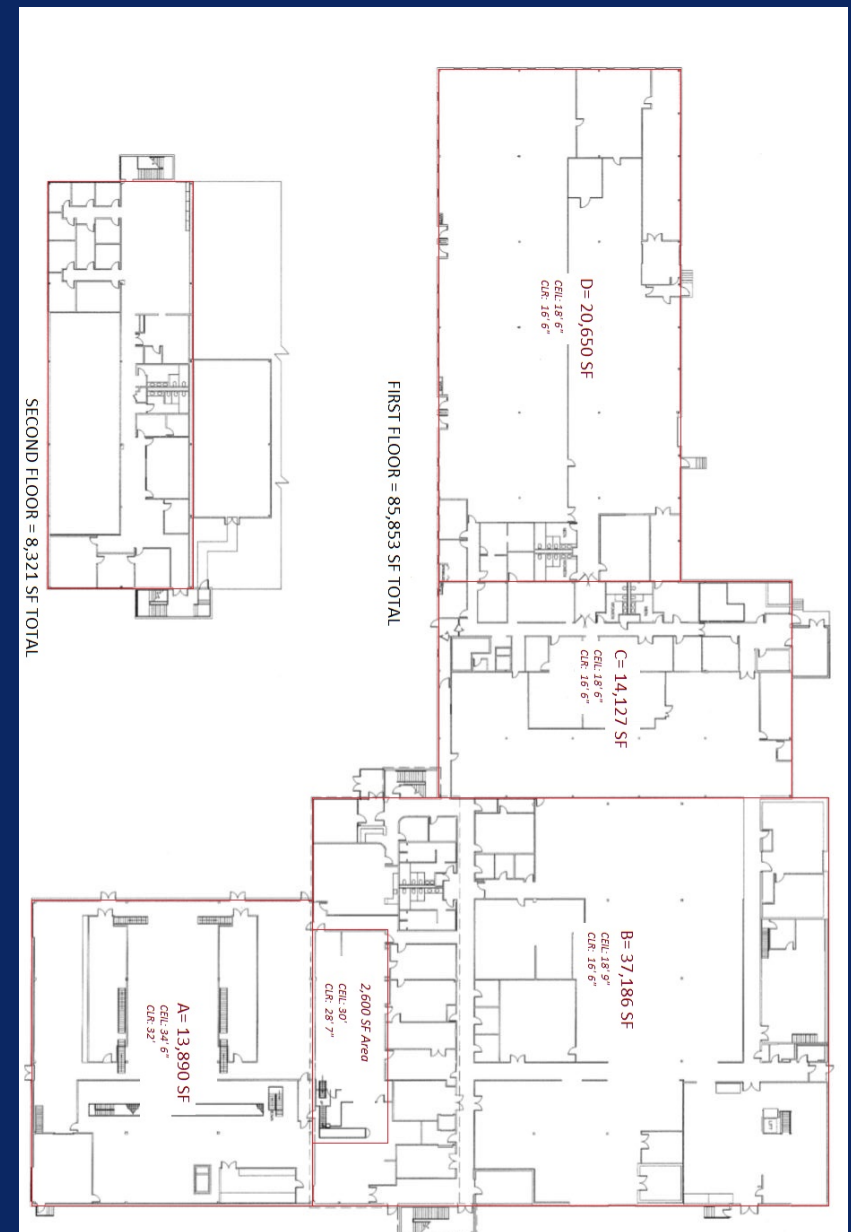
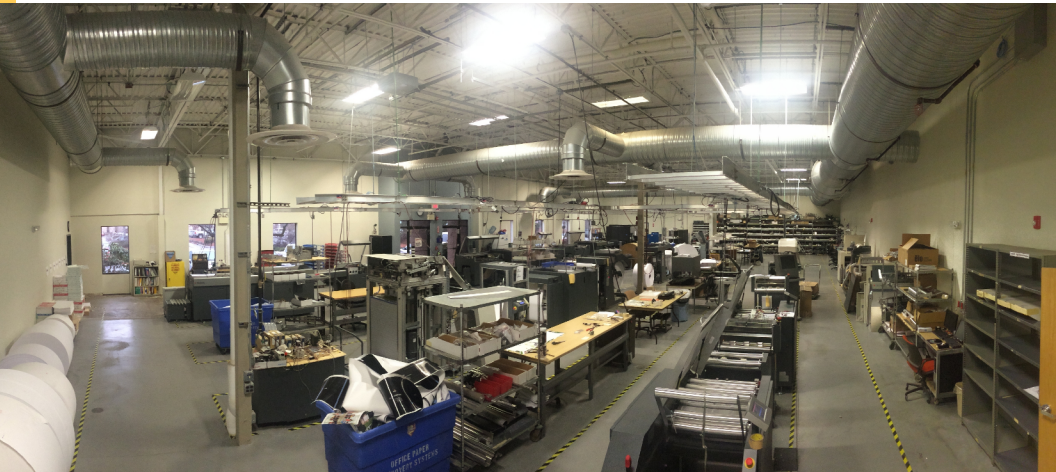
One of the area's premier manufacturing facilities, 900 Middlesex once served as the main manufacturing and R&D center for a large solar panel company, and now offers an abundance of Class B manufacturing, flex, R&D, lab-ready and office space for users requiring a large floorplan.

Able to accommodate over 94,000 sf, this Class B facility features 16,000 sf of finished office space, and is one of the only buildings in the area to offer 32' clear heights in a top-tier manufacturing wing.

Ideally located at the Middlesex Technology Center, 900 Middlesex provides easy access to Boston via Route 3, Routes 128/I-95 and I-495.

Additional highlights for the property include:

- Fully air conditioned building
- Massive electrical capacity with excellent distribution
- Piped gas infrastructure
- 12' -32' clear heights
- 6 10' x 10' dock-height doors



FLEXIBLE LEASE TERMS AND FLOORPLANS AVAILABLE

Mark Carangelo
Chief Executive Officer
Direct: 617-728-4401 | Mobile: 617-833-8400
mark@equitablerealestate.com

Ian Curran
Associate
Direct: 617-728-4410 | Mobile: 617-750-4202
icurran@equitablerealestate.com

CONTACT US