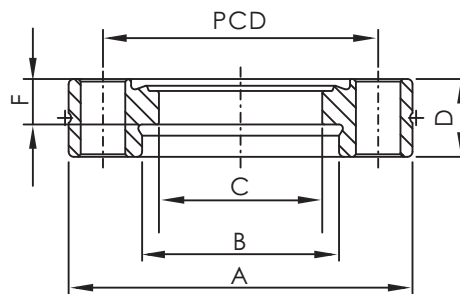


# CF Flanges



## CF BORED FLANGES

\*Material: SS 304L

\* Tapped and Through Holes

Part Number	Size	A (mm)	B (mm)	C (mm)	D (mm)	F (mm)	PCD (mm)	Bolt Holes	Diameter (mm) / Thread Type
CF-BF-133x038	CF1.33"(DN16)	33.70	9.65	-	7.60	-	26.97	6	4.37
CF-BF-133x038T	CF1.33"(DN16)	33.70	9.65	-	7.60	-	26.97	6	8-32
CF-BF-133x038M	CF1.33"(DN16)	33.70	9.65	-	7.60	-	26.97	6	M4
CF-BF-133x050	CF1.33"(DN16)	33.70	12.83	-	7.60	-	26.97	6	4.37
CF-BF-133x050T	CF1.33"(DN16)	33.70	12.83	-	7.60	-	26.97	6	8-32
CF-BF-133x050M	CF1.33"(DN16)	33.70	12.83	-	7.60	-	26.97	6	M4
CF-BF-133x075	CF1.33"(DN16)	33.70	19.30	16.00	7.60	4.45	26.97	6	4.37
CF-BF-133x075T	CF1.33"(DN16)	33.70	19.30	16.00	7.60	4.45	26.97	6	8-32
CF-BF-133x075M	CF1.33"(DN16)	33.70	19.30	16.00	7.60	4.45	26.97	6	M4
CF-BF-212x100	CF2.12"(DN25)	53.80	25.65	23.90	11.90	4.32	41.28	4	6.73
CF-BF-212x100T	CF2.12"(DN25)	53.80	25.65	23.90	11.90	4.32	41.28	4	1/4-28
CF-BF-212x100M	CF2.12"(DN25)	53.80	25.65	23.90	11.90	4.32	41.28	4	M6
CF-BF-275x075	CF2.75"(DN40)	69.30	19.30	16.00	12.70	5.31	58.72	6	6.73
CF-BF-275x075T	CF2.75"(DN40)	69.30	19.30	16.00	12.70	5.31	58.72	6	1/4-28
CF-BF-275x075M	CF2.75"(DN40)	69.30	19.30	16.00	12.70	5.31	58.72	6	M6
CF-BF-275x100	CF2.75"(DN40)	69.30	25.65	22.10	12.70	5.31	58.72	6	6.73
CF-BF-275x100T	CF2.75"(DN40)	69.30	25.65	22.10	12.70	5.31	58.72	6	1/4-28
CF-BF-275x100M	CF2.75"(DN40)	69.30	25.65	22.10	12.70	5.31	58.72	6	M6
CF-BF-275x150	CF2.75"(DN40)	69.30	38.35	36.60	12.70	5.31	58.72	6	6.73
CF-BF-275x150T	CF2.75"(DN40)	69.30	38.35	36.60	12.70	5.31	58.72	6	1/4-28
CF-BF-275x150M	CF2.75"(DN40)	69.30	38.35	36.60	12.70	5.31	58.72	6	M6
CF-BF-275x175	CF2.75"(DN40)	69.30	44.70	41.20	12.70	5.31	58.72	6	6.73
CF-BF-275x175T	CF2.75"(DN40)	69.30	44.70	41.20	12.70	5.31	58.72	6	1/4-28
CF-BF-275x175M	CF2.75"(DN40)	69.30	44.70	41.20	12.70	5.31	58.72	6	M6
CF-BF-338x200	CF3.38"(DN50)	85.30	51.05	49.30	17.40	5.72	72.39	8	8.43
CF-BF-338x200T	CF3.38"(DN50)	85.30	51.05	49.30	17.40	5.72	72.39	8	5/16-24
CF-BF-338x200M	CF3.38"(DN50)	85.30	51.05	49.30	17.40	5.72	72.39	8	M8
CF-BF-450x250	CF4.50"(DN63)	113.50	63.75	62.00	17.40	9.53	92.15	8	8.43
CF-BF-450x250T	CF4.50"(DN63)	113.50	63.75	62.00	17.40	9.53	92.15	8	5/16-24
CF-BF-450x250M	CF4.50"(DN63)	113.50	63.75	62.00	17.40	9.53	92.15	8	M8
CF-BF-462x300	CF4.62"(DN80)	117.00	76.45	74.70	20.60	9.60	102.36	10	8.43
CF-BF-462x300T	CF4.62"(DN80)	117.00	76.45	74.70	20.60	9.60	102.36	10	5/16-24
CF-BF-462x300M	CF4.62"(DN80)	117.00	76.45	74.70	20.60	9.60	102.36	10	M8
CF-BF-600x400	CF6.00"(DN100)	151.60	101.85	99.60	19.80	11.10	130.25	16	8.43
CF-BF-600x400T	CF6.00"(DN100)	151.60	101.85	99.60	19.80	11.10	130.25	16	5/16-24
CF-BF-600x400M	CF6.00"(DN100)	151.60	101.85	99.60	19.80	11.10	130.25	16	M8
CF-BF-675x500	CF6.75"(DN130)	170.69	127.25	123.83	21.34	11.68	151.61	18	8.43
CF-BF-675x500T	CF6.75"(DN130)	170.69	127.25	123.83	21.34	11.68	151.61	18	5/16-24
CF-BF-675x500M	CF6.75"(DN130)	170.69	127.25	123.83	21.34	11.68	151.61	18	M8
CF-BF-800x600	CF8.00"(DN160)	202.44	152.91	150.40	22.35	12.70	181.05	20	8.43
CF-BF-800x600T	CF8.00"(DN160)	202.44	152.91	150.40	22.35	12.70	181.05	20	5/16-24
CF-BF-800x600M	CF8.00"(DN160)	202.44	152.91	150.40	22.35	12.70	181.05	20	M8
CF-BF-1000x800	CF10.00"(DN200)	253.24	203.71	200.40	24.64	12.70	231.85	24	8.43
CF-BF-1000x800T	CF10.00"(DN200)	253.24	203.71	200.40	24.64	12.70	231.85	24	5/16-24
CF-BF-1000x800M	CF10.00"(DN200)	253.24	203.71	200.40	24.64	12.70	231.85	24	M8
CF-BF-1200x1000	CF12.00"(DN250)	304.04	254.51	250.95	25.90	12.70	283.97	32	8.43
CF-BF-1200x1000T	CF12.00"(DN250)	304.04	254.51	250.95	25.90	12.70	283.97	32	5/16-24
CF-BF-1200x1000M	CF12.00"(DN250)	304.04	254.51	250.95	25.90	12.70	283.97	32	M8
CF-BF-1325x1000	CF13.25"(DN270)	335.79	254.51	250.95	28.45	12.70	306.32	30	10.49
CF-BF-1325x1000T	CF13.25"(DN270)	335.79	254.51	250.95	28.45	12.70	306.32	30	3/8-24
CF-BF-1325x1000M	CF13.25"(DN270)	335.79	254.51	250.95	28.45	12.70	306.32	30	M10
CF-BF-1400x1200	CF14.00"(DN300)	354.84	305.31	301.75	28.45	12.70	325.37	30	10.49
CF-BF-1400x1200T	CF14.00"(DN300)	354.84	305.31	301.75	28.45	12.70	325.37	30	3/8-24
CF-BF-1400x1200M	CF14.00"(DN300)	354.84	305.31	301.75	28.45	12.70	325.37	30	M10
CF-BF-1650x1400	CF16.50"(DN350)	418.34	356.11	352.00	28.45	12.70	388.87	36	10.49
CF-BF-1650x1400T	CF16.50"(DN350)	418.34	356.11	352.00	28.45	12.70	388.87	36	3/8-24
CF-BF-1650x1400M	CF16.50"(DN350)	418.34	356.11	352.00	28.45	12.70	388.87	36	M10

\*Note: SS 316LN Material Available on Request.

CF