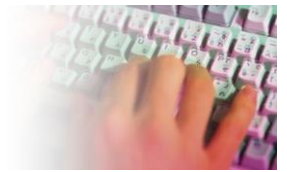




Windows 10 Security Settings



Schedule WHEN Windows Update restarts the computer automatically. So you are warned in Advance

- ❖ Settings
 - Update & Recovery
 - Windows Update
 - Advanced options
 - Under Choose how updates are installed
 - Pick Notify to Schedule Restart from the drop-down menu

Choose Notifications you may want to stop or start

- Settings
- System
- Notifications & Actions
- Turn off
 - Tips about Windows
 - App notifications
 - Lock screen notifications

Choose Power & Sleep Settings

- Settings
- System
- Power & sleep
- Screen time
- Hard drive time

Turn off syncing when you have a Microsoft Account

- Settings
- Accounts
- Family & Other users
- Add them NOT as an administrator, limits visitors ability to download & install on your pc

Open a second user (Visitor) for the PC

- Settings
- Accounts
- Sync or don't sync your settings

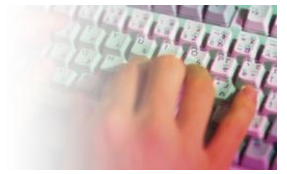
WiFi Sense - Turn it OFF

Microsoft enables the option and allows your device to acquire WiFi passwords from friends and shares your password with your contacts and Facebook Friends and Skype Friends.

- Settings
- Network & Internet
- WiFi
- Manage Wifi settings
- Turn OFF == connect to suggested open Hotspots
- Turn OFF == connect to networks shared with my contacts



Windows 10 Security Settings



Turn off WUDO. (Windows Update Delivery Optimization)

Windows 10 uses your bandwidth to distribute updates to other people

- Settings
- Update & Security
- Windows Updates
- Advanced Options
- Choose how updates are delivered
- Updates from more than one place - **OFF**
- If you have more than one windows PC in the house you may want to choose
 - PCs on my local network

Privacy Options, Personalized Ads, Location, Getting to Know You and Feedback

- Settings
- Privacy
- General = do you want Microsoft to tell their advertisers the websites you visit?
- Location = do you want your pc to identify where it is located, all the time?
- Camera = If you use Skype on your PC it has to be on
- Microphone= If you use Skype on your PC it has to be on
- Speech, inking and typing = Off otherwise it looks at your contacts, emails you type and calendar
- Account Info = turn it OFF otherwise apps like Facebook & EMail can use your name , picture and other account info
- Contacts= Leave mail and Calendar ON, everything else OFF
- Calendar =OFF
- Messaging OFF
- Radios = ON for Wifi and Bluetooth devices (printers, mouse, speakers)
- Other Devices ' OFF
- Feedback & Diagnostics:
 - Feedback Frequency – Automatic
 - Diagnostic and Usage Data = Basic
- Background Apps = Choose what you want running in the background
 - Edge ON
 - Photos ON
 - Store ON