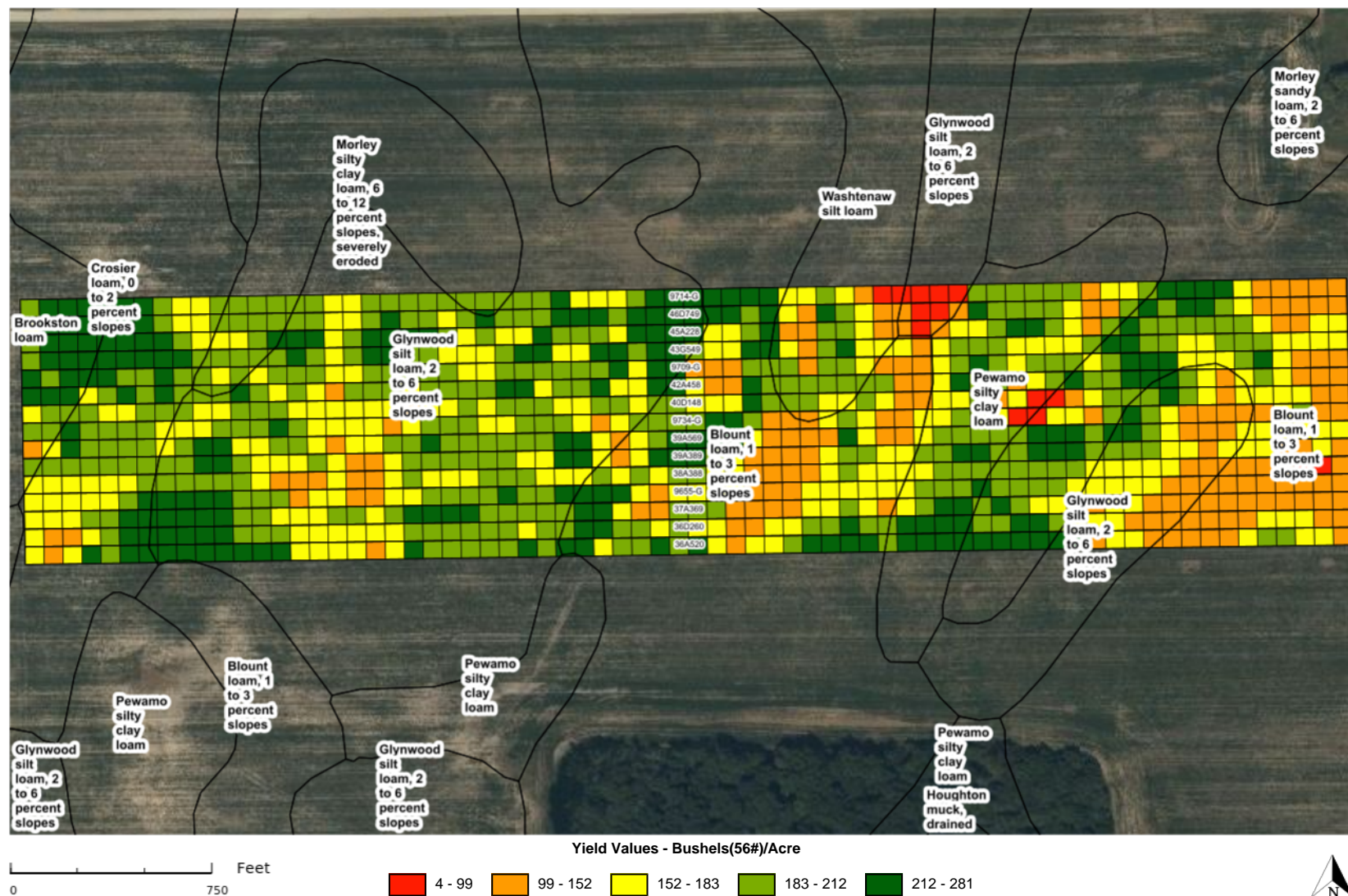


2020 Corn Individual Trial Report

Cooperator: Not Available
 Trial County: Miami, Indiana
 Trial Name: US35 LCK CG FTM 879557332971141
 Report Created: Oct 27, 2020

Trial Type: FTM
 Planting Date: Apr 21, 2020
 Harvest Date: Oct 1, 2020
 Planting Rate: 35,000 Seeds/Acre

Previous Crop: Soybeans
 Tillage Type: Conservation: Strip-Till
 Irrigation: No
 Row Width: 30 Inches



2020 Corn Individual Trial Report

Cooperator: **Not Available**
 Trial County: **Miami, Indiana**
 Trial Name: **US35 LCK CG FTN 879557332971141**
 Report Created: **Oct 27, 2020**

Trial Type: **FTN**
 Planting Date: **Apr 21, 2020**
 Harvest Date: **Oct 1, 2020**
 Planting Rate: **35,000 Seeds/Acre**

Previous Crop: **Soybeans**
 Tillage Type: **Conservation: Strip-Till**
 Irrigation: **No**
 Row Width: **30 Inches**

Legend

Soils (Columns in descending order by area)

- ¹Blount — Blount loam, 1 to 3 percent slopes
²Glynwood — Glynwood silt loam, 2 to 6 percent slopes
³Pewamo — Pewamo silty clay loam

Product Information					Plot Level Data			Yield By Soil		
Plot #	Seed Brand	Product Name	Traits	RM	Yield Rank	Yield	Moisture	Blount ¹	Glynwood ²	Pewamo ³
1	SPECIALTY HYBRIDS	36A520	SSRIB	106	1	200.3	17.3	198.3	200.5	
2	SPECIALTY HYBRIDS	36D260	VT2PRIB	106	10	182.7	19.4	178.7	181.6	
3	SPECIALTY HYBRIDS	37A369	SSRIB	107	11	178.5	19.6	162.0	188.3	
4	STINE	9655-G	AGT	108	13	175.0	18.5	162.1	180.8	
5	SPECIALTY HYBRIDS	38A388	SSRIB	108	15	165.7	18.5	157.8	168.8	
6	SPECIALTY HYBRIDS	39A389	SSRIB	109	7	185.0	19.3	175.9	186.1	
7	SPECIALTY HYBRIDS	39A569	SSRIB	109	8	183.4	20.4	177.8	185.1	
8	STINE	9734-G	AGT	110	12	175.1	22.0	166.8	179.0	
9	SPECIALTY HYBRIDS	40D148	VT2PRIB	110	14	173.8	22.0	166.2	179.6	
10	SPECIALTY HYBRIDS	42A458	SSRIB	112	5	189.4	20.7	177.9	190.9	
11	STINE	9709-G	AGT	112	6	189.1	21.9	170.2	195.8	
12	SPECIALTY HYBRIDS	43G549	DGVT2PRIB	113	2	195.5	20.3	184.5	200.9	182.7
13	SPECIALTY HYBRIDS	45A228	SSRIB	115	3	194.6	22.5	185.4	200.7	186.8
14	SPECIALTY HYBRIDS	46D749	VT2PRIB	116	4	191.8	25.5	189.8	194.8	175.3
15	STINE	9714-G	AGT	105	9	183.0	24.5	185.4	174.5	183.2
Field Average						184.2	20.8	175.0	186.6	182.0

Entries with less than 295 feet of row length are not listed for the Yield by Soil results, but are included in the plot averages. All yield values are in bu/acre and are adjusted to 15.0% moisture. Green highlight designates the top five yield values per soil type. Report includes top four soils based on acreage.

SPECIALTY® Corn Legend

VALUE ADDED TRAITS:

- Conv** = Conventional
- RR2** = Roundup Ready® Corn 2
- SS** = SmartStax® corn
- SSRIB** = SmartStax® RIB Complete® corn blend
- VT2P** = VT Double PRO® corn
- VT2PRIB** = VT Double PRO® RIB Complete® corn blend
- VT3P** = Genuity® VT Triple PRO® corn
- VT3PRIB** = Genuity® VT Triple PRO® RIB Complete® corn blend
- DGVT2P** = DroughtGard® Hybrids with VT Double PRO® corn
- DGVT2PRIB** = DroughtGard® Hybrids with VT Double PRO® RIB Complete® corn blend
- DGVT3P** = DroughtGard® Hybrids with Genuity® VT Triple PRO® corn
- DGVT3PRIB** = DroughtGard® Hybrids with Genuity® VT Triple PRO® RIB Complete® corn blend



Before opening a bag of seed, be sure to read, understand and accept the stewardship requirements, **including applicable refuge requirements for insect resistance management**, for the biotechnology traits expressed in the seed as set forth in the Monsanto Technology/Stewardship Agreement that you sign. By opening and using a bag of seed, you are reaffirming your obligation to comply with the most recent stewardship requirements.



Monsanto Company is a member of Excellence Through Stewardship® (ETS). Monsanto products are commercialized in accordance with ETS Product Launch Stewardship Guidance, and in compliance with Monsanto's Policy for Commercialization of Biotechnology-Derived Plant Products in Commodity Crops. This product has been approved for import into key export markets with functioning regulatory systems. Any crop or material produced from this product can only be exported to, or used, processed or sold in countries where all necessary regulatory approvals have been granted. It is a violation of national and international law to move material containing biotech traits across boundaries into nations where import is not permitted. Growers should talk to their grain handler or product purchaser to confirm their buying position for this product. Excellence Through Stewardship® is a registered trademark of Excellence Through Stewardship.

B.t. products may not yet be registered in all states. Check with your Monsanto representative for the registration status in your state.

IMPORTANT IRM INFORMATION: RIB Complete® corn blend products do not require the planting of a structured refuge **except** in the Cotton-Growing Area where corn earworm is a significant pest. SmartStax® RIB Complete® corn blend is not allowed to be sold for planting in the Cotton-Growing Area. **See the IRM/Grower Guide for additional information. Always read and follow IRM requirements.**

Individual results may vary, and performance may vary from location to location and from year to year. This result may not be an indicator of results you may obtain as local growing, soil and weather conditions may vary. Growers should evaluate data from multiple locations and years whenever possible.

ALWAYS READ AND FOLLOW PESTICIDE LABEL DIRECTIONS. Roundup Ready technology contains genes that confer tolerance to glyphosate, an active ingredient in Roundup® brand agricultural herbicides. Agricultural herbicides containing glyphosate will kill crops that are not tolerant to glyphosate. DroughtGard®, Genuity Design®, Genuity®, RIB Complete®, Roundup Ready®, Roundup®, SmartStax®, VT Double PRO® and VT Triple PRO® are trademarks of Monsanto Technology LLC. LibertyLink® and the Water Droplet Design® is a registered trademark of Bayer. Herculex® is a registered trademark of Dow AgroSciences LLC. Respect the Refuge and Corn Design® and Respect the Refuge® are registered trademarks of National Corn Growers Association. All other trademarks are the property of their respective owners.

©2017 Monsanto Company.

Specialty and Design® and Your Field, Our Specialty® are registered trademarks of American Seeds, LLC.