

Update Your Contact Information!

Has anything changed recently? Whether it's your address, phone number, or email, it's important to keep your information up to date. Don't miss out on important updates from West Wetaskiwin REA! Simply contact us with any changes, and we'll ensure your records are current. Stay connected and informed with West Wetaskiwin REA.

If you have any updates to make to your account, please call 1.877.428.3972 and ask to speak to Billing.

Protecting Our Members: March is Fraud Prevention Month

West Wetaskiwin REA stands vigilant in safeguarding our members against fraudulent activities. With March being recognized as Fraud Prevention Month, it's crucial to reinforce our commitment to your security.

We want to remind all our valued members that we will only reach out to you through official channels. This includes our verified phone numbers and email addresses. Any unsolicited communication claiming to be from us, especially those requesting personal or financial information, should be treated with caution.

It's essential to remain vigilant and report any suspicious activity to us immediately. By staying informed and proactive, we can work together to keep our community safe from fraud.

At West Wetaskiwin REA, your security is our top priority. Let's continue to stand united in protecting each other against fraud. Together, we can create a safer and more secure environment for all.



For Power Troubles:

Battle River Power Coop (our distribution system operator)
Toll-free: 1-877-428-3972

For RRO Billing and Account Inquiries:

Battle River Power Coop | Box 1420 Camrose, Alberta T4V 1X3
Toll-free: 1-877-428-3972
E-mail: brpc@brpower.coop | Website: www.brpower.coop

For REA Inquiries, New Service and Service Change Requests:

Contact West Wetaskiwin REA, RR #1
Station Main, Wetaskiwin, Alberta T9A 1W8
Tel: 780-335-9378 (WEST)
E-mail: westwet@telus.net | Website: www.westwetaskiwinrea.com

For service requests: go to www.westwetaskiwinrea.com/new-or-changes-to-services.html

Managing Vegetation with Proper Planting

Trees are not only a beautiful addition to any landscape but also play a vital role in providing shelterbelts and enhancing aesthetics. However, when it comes to power lines, trees can pose serious hazards.

Trees situated too close to power lines can lead to power outages or interruptions when branches make contact with overhead lines, potentially causing fires due to electrical arcing. Additionally, proximity to trees can pose a significant danger to individuals, as electricity can jump from a tree to a person, especially if the tree is wet.

Vegetation management is crucial for maintaining a safe and reliable distribution system. While Battle River Power Coop bears the primary responsibility for managing vegetation, members also play a role in deciding where and what to plant in relation to power line locations.

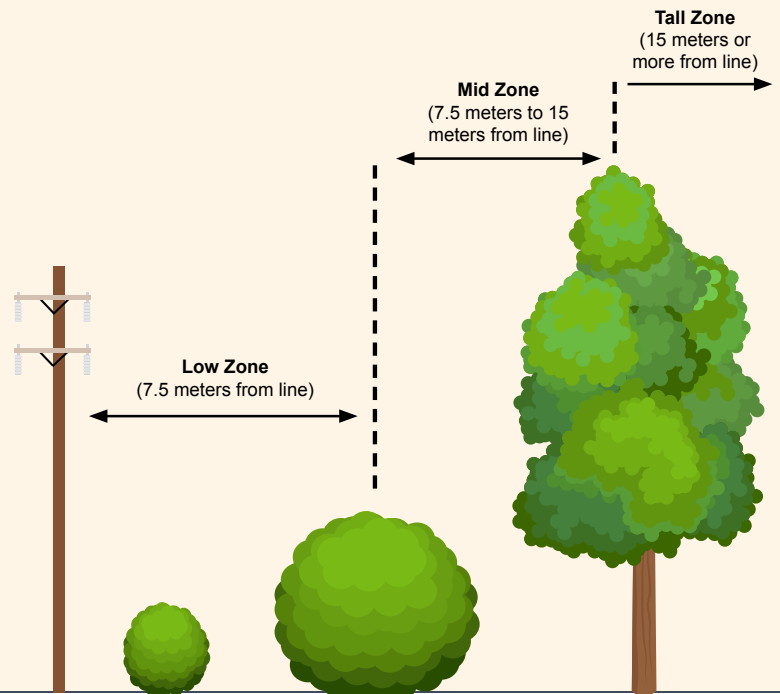
Before embarking on any planting project, it's imperative to contact Utility Safety Partners (formerly Alberta One-Call at 1-800-242-3447) to have utility lines marked. Exercise extreme caution when digging around electrical infrastructure to avoid any contact.

It's essential to understand that having power lines on or near your property doesn't mean you can't plant trees. However, it's crucial to research or consult with experts to determine the mature height and width of trees to ensure they won't interfere with power lines.

By practicing proper planting techniques and understanding the potential risks associated with trees and power lines, we can maintain a safe environment for everyone while enjoying the beauty of trees in our landscape.

The following guidelines will assist in ensuring your trees and powerlines don't meet!

- Nothing should be planted closer than 5 meters (roughly 16.5 feet) from the base of a power pole.
- Trees or shrubs planted closer than 7.5 meters (24.5 feet) should be low-growing varieties (e.g., berry hedges, roses, honeysuckle, etc.).
- In the mid-zone, lilac and cherry trees could be potential choices.
- Tall trees (spruce, birch, pine, etc.) should be planted at least 15 meters (just over 49 feet) away from powerlines.
- If you have a secondary line connecting your home or farm to a power line, avoid planting trees that will grow into the line and become hazardous.



**Regulated
Rate
Option**



The Regulated Rate Option (RRO) may increase or decrease from month to month as it is priced on the open market and subject to many factors relating to supply and demand. It is not a 'regulated' rate, rather is a default rate. If you do not have a contract with an electricity retailer, then you are on the RRO. For March 2024, the RRO is priced at \$0.10409 per kWh, reflected on your enclosed orange bill. For April 2024, the Battle River Power Coop monthly RRO billing rate is \$0.11050.

Members are free to purchase electricity services from a retailer of their choice. For a list of retailers, visit ucahelps.alberta.ca or call 310-4822 (toll free in Alberta).